

The R-Safety app enables you to take photos directly in the app as part of the vehicle inspection process. You must take photos in accordance with the Supplementary AIS Business Rules for mobile inspections.

<b>Rule 2.12m</b>	<p>An examiner must take clear and legible photos in the R-Safety application of the:</p> <ul style="list-style-type: none"><li>• inspection location that clearly shows the vehicle raised from the ground using a jack or stands, and the surrounds and suitability of the inspection site;</li><li>• vehicle to be inspected, clearly showing the vehicle and number plate;</li><li>• Vehicle Identification Number (VIN) of the inspected vehicle;</li><li>• odometer reading from the vehicle being inspected;</li><li>• brake test machine 'in situ' in the vehicle that is to be tested (while vehicle is stationary), and;</li><li>• brake test machine prints for the Mobile Safety Check inspection.</li></ul> <p>*Note: it is illegal to use a mobile phone while operating a motor vehicle. Do not take photographs using a mobile phone or other device while driving.</p>
-------------------	---

## What clear and legible photos in the R-Safety app should look like

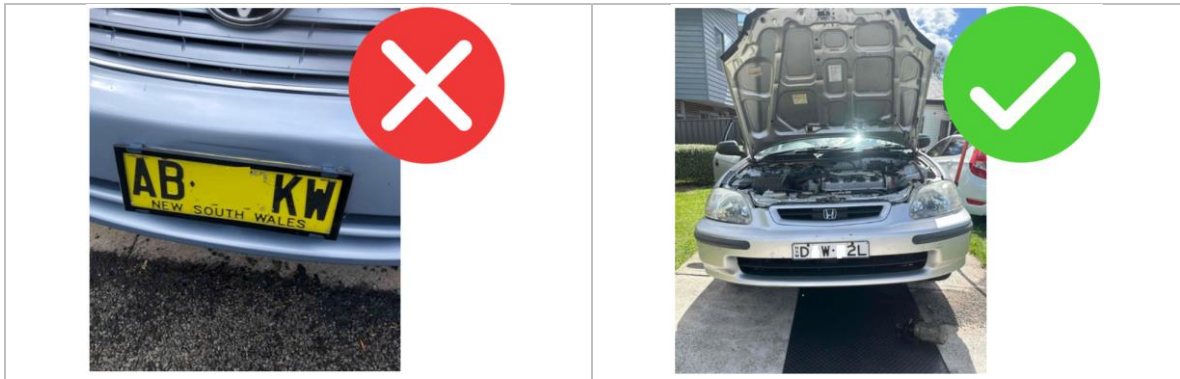
- **Inspection location that clearly shows the vehicle raised from the ground using a jack or stands, and the surrounds and suitability of the inspection site**



Tip – The photo must clearly show the vehicle is in a suitable inspection location in accordance with rule 2.03 of the Supplementary AIS Business Rules for mobile inspections.

## Taking photos in the R-Safety app

- Vehicle to be inspected, clearly showing the vehicle and number plate



Tip – The photo must clearly show the vehicle and clearly show the number plate.

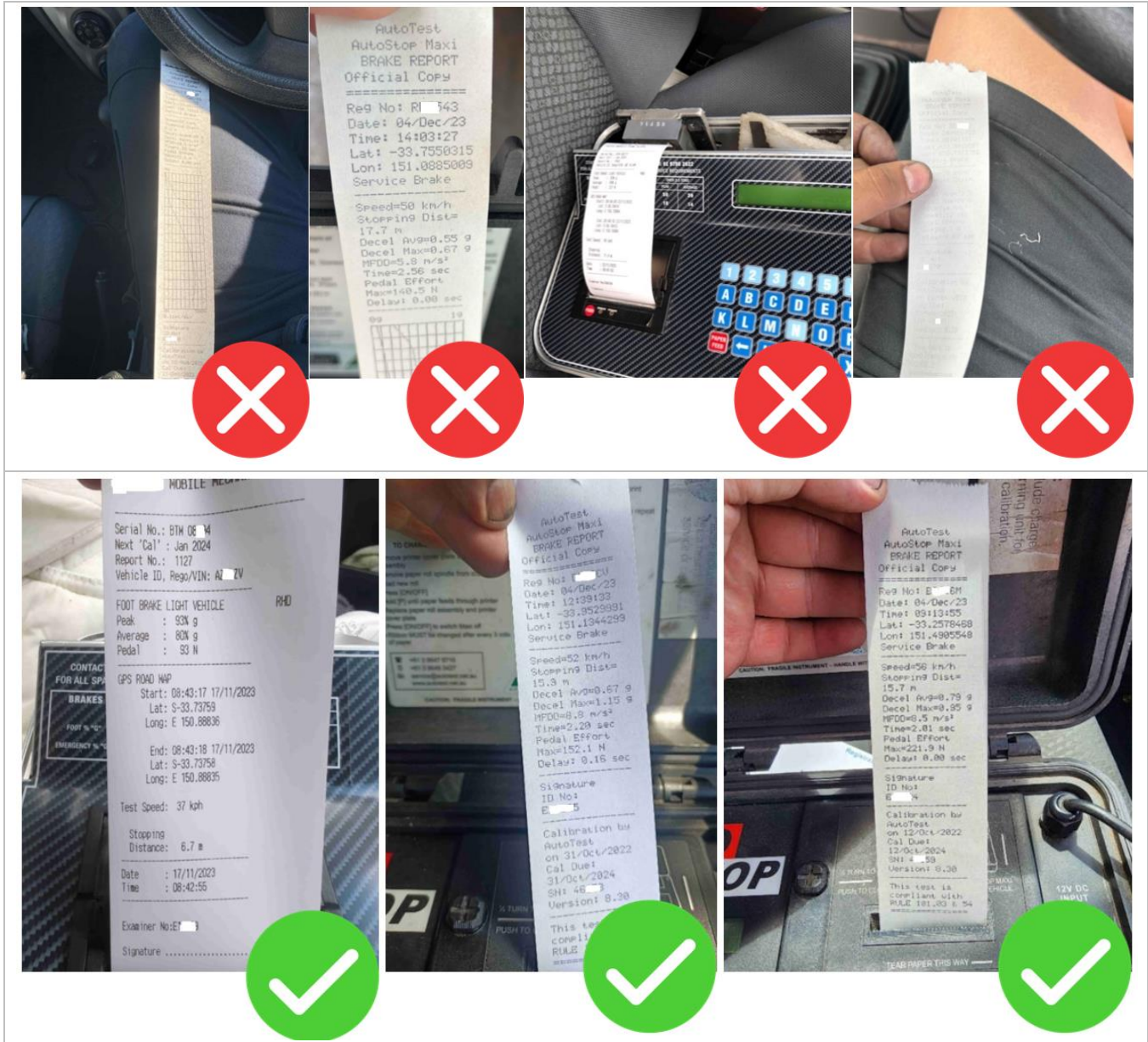
- Vehicle Identification Number (VIN) of the inspected vehicle



Tip – The photo must be of the stamped VIN or chassis number. A photo of the compliance plate or label is not sufficient.

## Taking photos in the R-Safety app

- Brake test machine prints for the Mobile Safety Check inspection



Tip – The photo of the brake test prints must be clear and legible and show the entire print out.