



Investigation work on Richmond Road between Elara Boulevard and St Marys Road, Berkshire Park

August 2024



Australian Government



Transport for NSW acknowledges the Darug people as the Traditional Custodians of the lands on which we work and pays respect to Elders past and present.

Richmond Road between Elara Boulevard and Heritage Rd at Marsden Park will be widened for about 1.5km to improve road safety, provide additional capacity along Richmond Road and improve the connection between Marsden Park and Blacktown.

Transport for NSW will continue with the investigations to collect information to assist with the planning and design of the project.

What work are we doing?

The work will involve locating and investigating underground utilities along Richmond Road between Elara Boulevard and St Marys Road, Berkshire Park.

These activities include:

- setting up temporary work sites
- using machinery to carry out potholing and digging holes
- fixing up the work areas after the investigation work has been completed

The holes in the footpath or road surface areas will be temporarily filled after each shift and then permanently fixed up before project completion.

When will we be working?

We will be on site for 20 day shifts and 10 night shifts between Monday 2 September to Saturday 16 November, weather permitting.

Our standard work hours are:

- Day – 7am to 6pm Monday to Friday and 8am to 1pm Saturday
- Night – 8pm to 5am Sunday to Thursday

Night work will be carried out on some days at specific locations. These night works are required to reduce traffic disruption and improve safety of workers and road users.

What will this mean for you?

Night work will involve some use of noisy machinery. We will make every effort to reduce the disturbance where possible, completing noisier work earlier in the evening and turning off vehicles when not in use.

Traffic changes

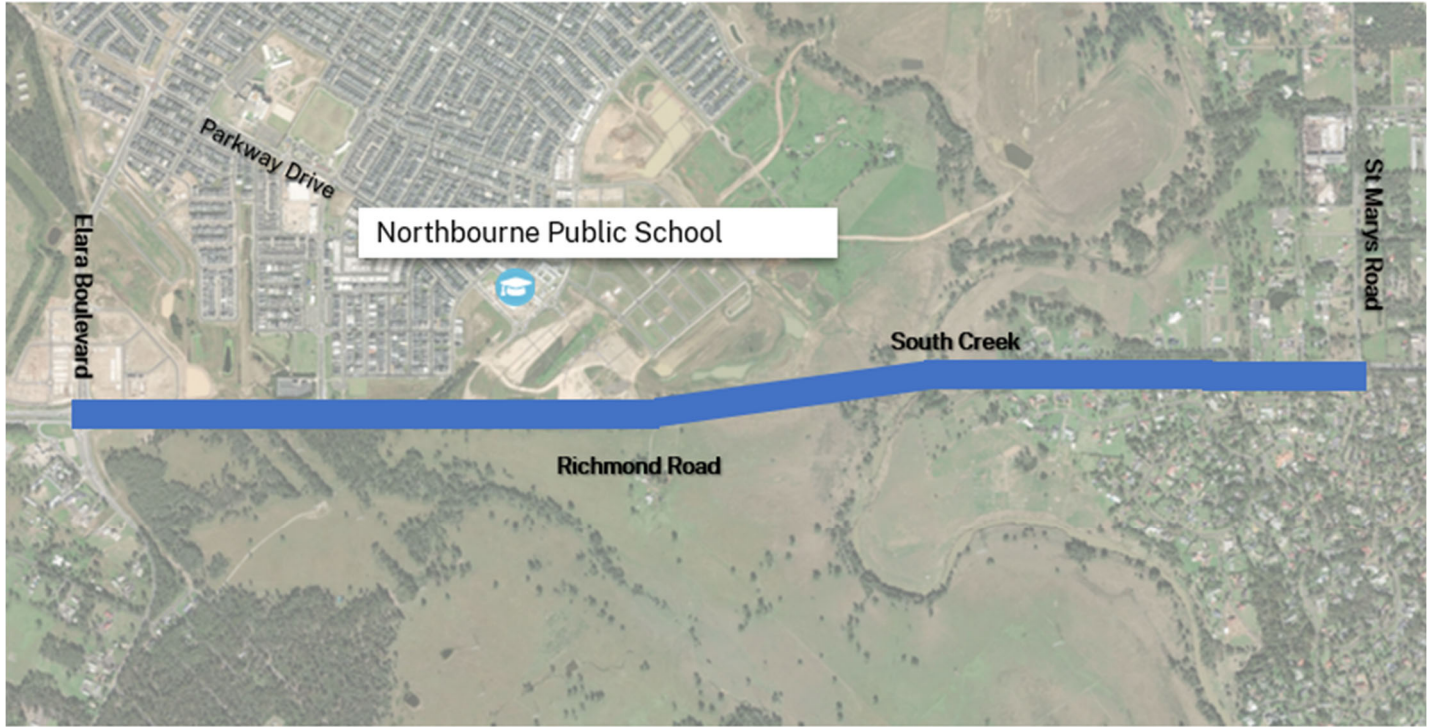
There will be temporary traffic changes to make sure the work zone is safe. Some lane closures, and a 40km/h speed limit will be in place.

Please keep to speed limits and follow the direction of traffic controllers and signs.

Transport thanks the community for their patience while we complete this important work.



Location of work



KEY  Investigation works

Contact us



Project Infoline **1300 367 561**



nwga@transport.nsw.gov.au



transport.nsw.gov.au/richmond-road-elara



Get project updates direct to your inbox.
Scan the QR code or email your request

www.transport.nsw.gov.au/privacy-statement#Your_Privacy



Interpreter service

For languages other than English call **131 450**
Fillipino • Gujarati • Punjabi • Hindi • Tamil

Para sa serbisyo ng interpreter sa ibang mga wika maliban sa Ingles, tumawag sa **131 450**

અંગ્રેજી સિવાયની ભાષાઓમાં દુભાષિયા સેવા માટે **૧૩૧ ૪૫૦** પર ફોન કરો

ਅੰਗਰੇਜ਼ੀ ਤੋਂ ਇਲਾਵਾ ਦੂਸਰੀਆਂ ਭਾਸ਼ਾਵਾਂ ਵਾਸਤੇ ਦੁਭਾਸ਼ੀਆ ਸੇਵਾ ਲਈ ਫੋਨ ਕਰੋ **131 450**

अंग्रेज़ी के अतिरिक्त अन्य भाषाओं के लिए दुभाषिया सेवा **131 450** पर कॉल करें

ஆங்கிலம் தவிர்த்த ஏனைய மொழிகளுக்கான மொழிபெயர்த்துரைப்பாளர் சேவைக்கு அழையுங்கள் **131 450**

