

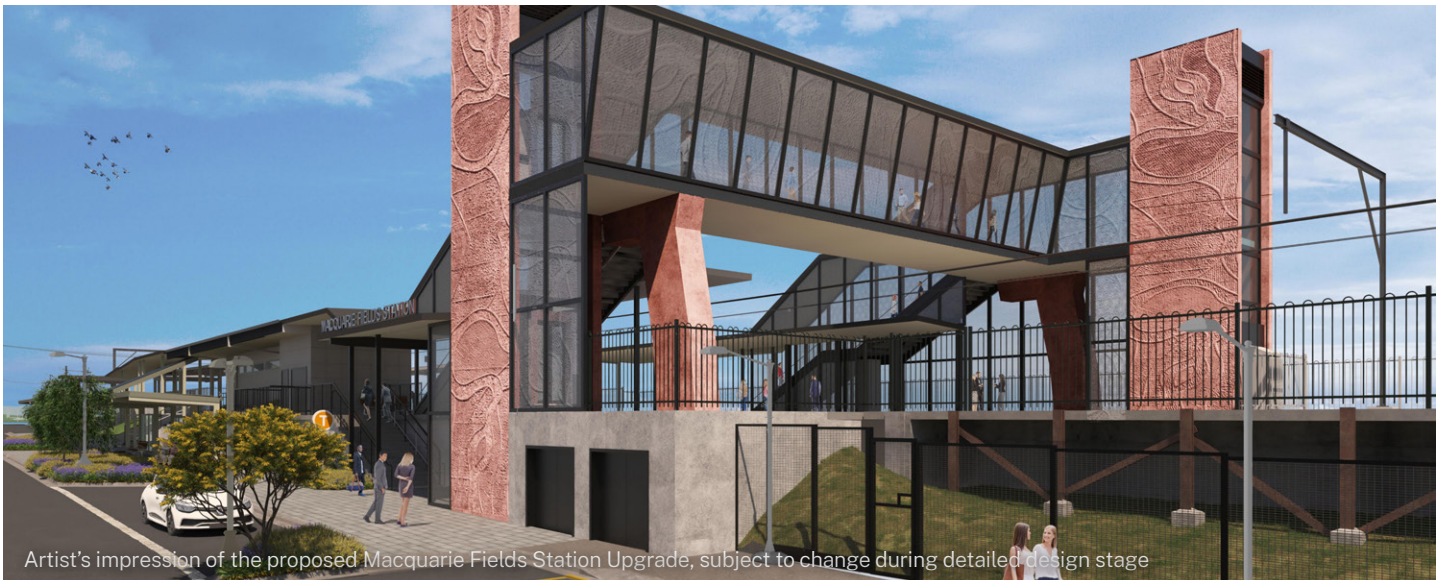
Macquarie Fields Station Upgrade

Safe Accessible Transport program

March 2024



Transport for NSW acknowledges the Dharawal people of the Dharawal Nation as the Traditional Custodians of the lands on which we work and pays respect to Elders past and present.



Artist's impression of the proposed Macquarie Fields Station Upgrade, subject to change during detailed design stage

The NSW Government is improving accessibility and safety at Macquarie Fields Station

This upgrade is being delivered as part of the Safe Accessible Transport program. The program aims to make public transport hubs more accessible, safe and inclusive.

Improvements will be designed to support our diverse customers, such as people with disabilities, parents or carers with prams, the elderly, and women and girls.

Key features of the proposed upgrade at Macquarie Fields include:

- A new passenger footbridge, connected by lifts and stairs with increased canopy coverage to the platforms and enhanced platform access from Railway Parade.
- Accessible parking spaces, accessible kiss and ride spaces, additional bike parking and a relocated bus stop on Railway Parade.
- Upgraded station forecourt and greater pedestrian connections to the station including a new pedestrian crossing in front of the station entrance and upgrades to the associated footpaths and kerb ramps.
- A new family accessible toilet, a new ambulant toilet, new hearing loops, platform regrading and tactile indicators, and associated electrical upgrades.
- Safety and security at the station and surrounding precinct will be enhanced through improved lighting, CCTV, and wayfinding signage.
- Placemaking enhancements including Connection to Country design elements.
- Relocation of the memorial plaque in a visible location close to the station.

What we have heard so far

Before preparing the concept design for Macquarie Fields Station, we engaged with various groups including people with disability, Aboriginal and Torres Strait Islander peoples and women and girls from the local community. These engagements have included Safer Cities Program workshops to understand women and girls perceptions of safety, and collaborative Connecting with Country events to understand the unique and enduring relationship between Aboriginal and Torres Strait Islander peoples and their ancestral lands, waters and natural resources.

The main elements we have incorporated into the concept design through these engagements include:

- identification of initiatives such as materials, landscaping design and art that recognise the area's rich Aboriginal culture and heritage
- improvements to lighting on the station platforms and Railway Parade
- larger expanse of the forecourt, to improve connectivity and provide a wider access path
- improving sight lines by removing storage area for bins
- new kiss and ride spaces
- proposed locations for art and heritage interpretation
- an improved pedestrian crossing
- better amenities including seating, shade and toilets

Transport will be engaging with the Campbelltown City Council and will continue discussions with stakeholders to seek feedback on the concept design and precinct improvements.

Have your say

We are seeking initial feedback from the community, passengers and key stakeholders on the concept design. Feedback will be responded to within the Review of Environmental Factors, which the community will be invited to have their say on in the coming months.

To view the design and learn more about the project, please scan the QR code on the next page or visit www.transport.nsw.gov.au/macquariefields

Feedback can be submitted by:

- Emailing projects@transport.nsw.gov.au
- Calling 1800 684 490
- In person at a pop-up information session (details on page 4)

Please provide your feedback by
5pm on Friday 29 March 2024.

Your feedback will help Transport understand what is important to passengers and the community.

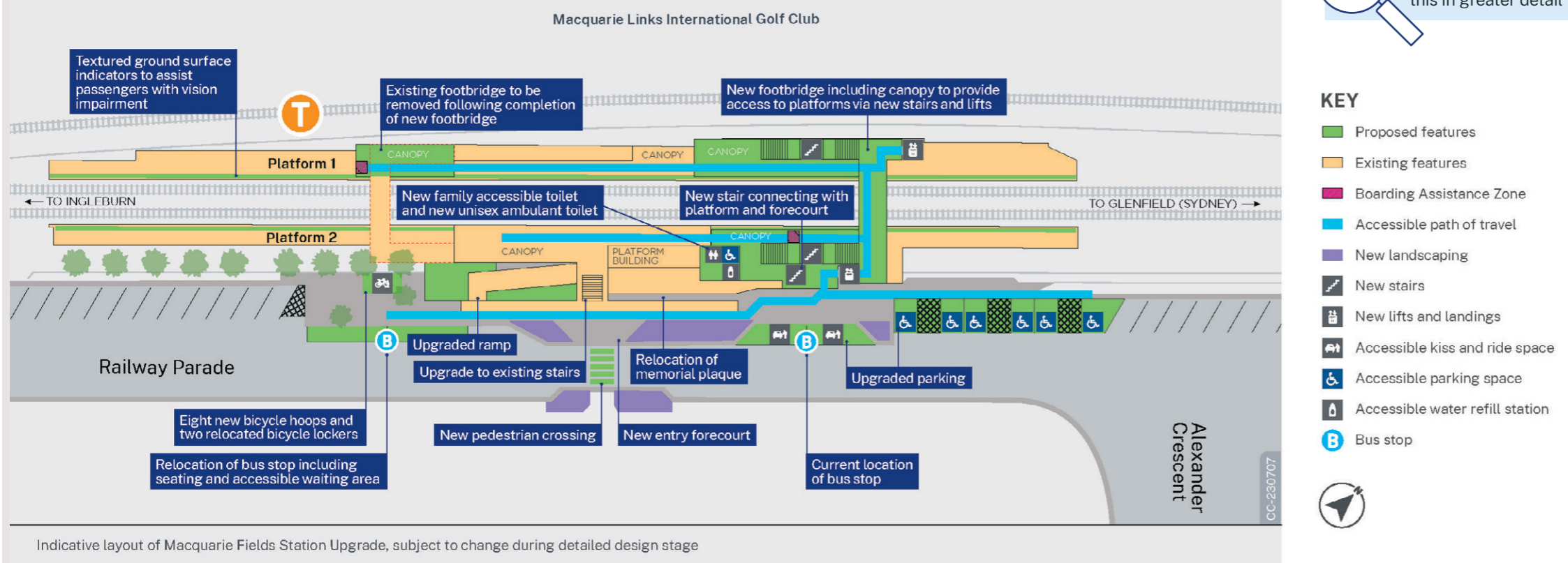
Next steps

- Targeted early engagement with key stakeholders
- Development of an initial concept design for the project
- **WE ARE HERE** Early engagement with community and stakeholders
- Review of Environmental Factors prepared for public display and community feedback sought
- Transport reviews and responds to feedback from the community within a Determination Report
- Project planning approval
- Detailed design stage
- Start of construction

Community Engagement

Subject to planning approval, site establishment will start late 2024 and main construction is expected to start in early 2025 and take around 18 months to complete.

Proposed key features of Macquarie Fields Station Upgrade





Meet the project team

We invite you to come and meet the team where you may ask questions and learn more about the proposed project.

You can drop in any time during these informal sessions.

Come and see us at:

- Macquarie Fields Station forecourt on Wednesday
13 March from 3pm to 6pm
- Glenquarie Town Centre (near Woolworths) on Thursday
21 March from 11am to 2pm



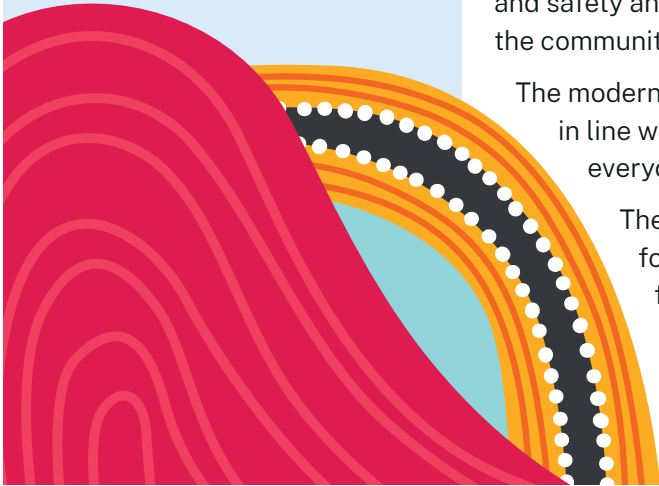
Safe Accessible Transport program

This project is being delivered as part of the Safe Accessible Transport program, which aims to make public transport safe, inclusive and easy to use for all passengers, especially people with disability, older people, people with prams or luggage and others who may be experiencing mobility problems.

The program will upgrade stations to achieve Disability Standards for Accessible Public Transport (DSAPT) compliance, improving amenity, access and safety and acknowledging the important role these locations have to the communities they serve.

The modernisation of the network also helps bring ageing infrastructure in line with current accessibility standards, making it possible for everyone to access transport services.

The 2023-2024 NSW Budget allocated a total of \$800.7m over four years to implement the new program, which combines the funds of both the existing Transport Access Program (TAP) and Commuter Car Park Program (CCP) and includes an additional \$300m commitment.



Get in touch

If you have any questions or would like more information please contact our project team:



1800 684 490



projects@transport.nsw.gov.au



transport.nsw.gov.au/macquariefields

www.transport.nsw.gov.au/privacy-statement#Your_Privacy



Interpreter service

For languages other than English call **131 450**
Bengali • Arabic • Nepalese • Samoan • Hindi

ইংরেজি ছাড়া অন্য ভাষায় দোভাষী পরিষেবা পেতে ১৩১ ৪৫০
নম্বরে কল করুন

لطلب خدمة الترجمة الشفهية للغات غير الإنجليزية اتصل
بالرقم **131 450**

अंग्रेजी बाहेक अन्य भाषाहरूमा दोभाषे सेवाको लागि १३१ ४५० मा
सम्पर्क गर्नुहोस्।

Auaunaga fa'aliliu upu mo gagana e ese mai ile Igilisi
telefoni le **131 450**

अंग्रेजी के अतिरिक्त अन्य भाषाओं के लिए दुभाषिया सेवा **131 450**
पर कॉल करें