

Sydney West Overhead Wiring Upgrade

Rail Service Improvement Program

August and September 2024



Transport for NSW pays respect to Elders past and present, and recognises and celebrates the diversity of Aboriginal peoples and their ongoing cultures and connections to the lands and waters of NSW.

The Rail Service Improvement Program, formerly known as More Trains, More Services enables a safer, more equitable, and integrated transport network where people can travel more safely, reliably, and efficiently across NSW.

What work are we doing?

Over the coming months, we will be upgrading and installing new overhead wiring infrastructure along the rail corridor between Westmead and Seven Hills and at Schofields. We will also be removing redundant foundations that previously supported these wires at Seven Hills.

When and where we'll be working

Work will take place inside the rail corridor between

- Seven Hills and Westmead
- Schofields between Eos Place and Beechcraft Street.

Temporary site compounds will be established in the rail corridor:

- north of Seven Hills Station, accessed from Terminus Road
- west of Westmead Station, accessed from the rear of Monarco Estate.

Access to the rail corridor at Schofields will occur via Railway Terrace.

Standard construction hours on this project are between **7am and 6pm Monday to Friday and 8am and 1pm on Saturdays.**

Out of hours work

In August and September, some work is required to take place outside of standard construction hours.

This work will take place between:

- **5am Thursday 29 August until 9pm Monday 2 September**
- **12am Monday 23 September until 11pm Friday 26 September**

Why we work outside of construction hours

We schedule work outside of standard construction hours to take place during Sydney Trains trackwork periods when no trains are running, minimising disruptions to commuter services and improving the safety of our construction team and customers.

Temporary parking removal

From 8pm Wednesday 28 August until 8pm Monday 2 September, up to 15 parking spaces will be unavailable in the Seven Hills Station Commuter Car Park for construction vehicle and machinery parking, deliveries of materials, and safe access into the rail corridor.

Signage and traffic control will be in place to assist motorists with these temporary changes.



What will this mean for you?

You may notice:

- an increase in workers and construction vehicles
- temporary parking changes
- traffic controllers and signage
- noise from machinery and equipment including excavators and hand tools.

Managing our impacts

We understand construction activities may cause disruption to our closest neighbours, and every effort will be made to minimise impacts where possible, including:

- locating equipment as far away from residents and businesses as possible
- ensuring lighting towers are directed downwards and away from residents
- compliance with strict environmental conditions relating to noise
- managing dust using suppression methods such as mist sprayers.

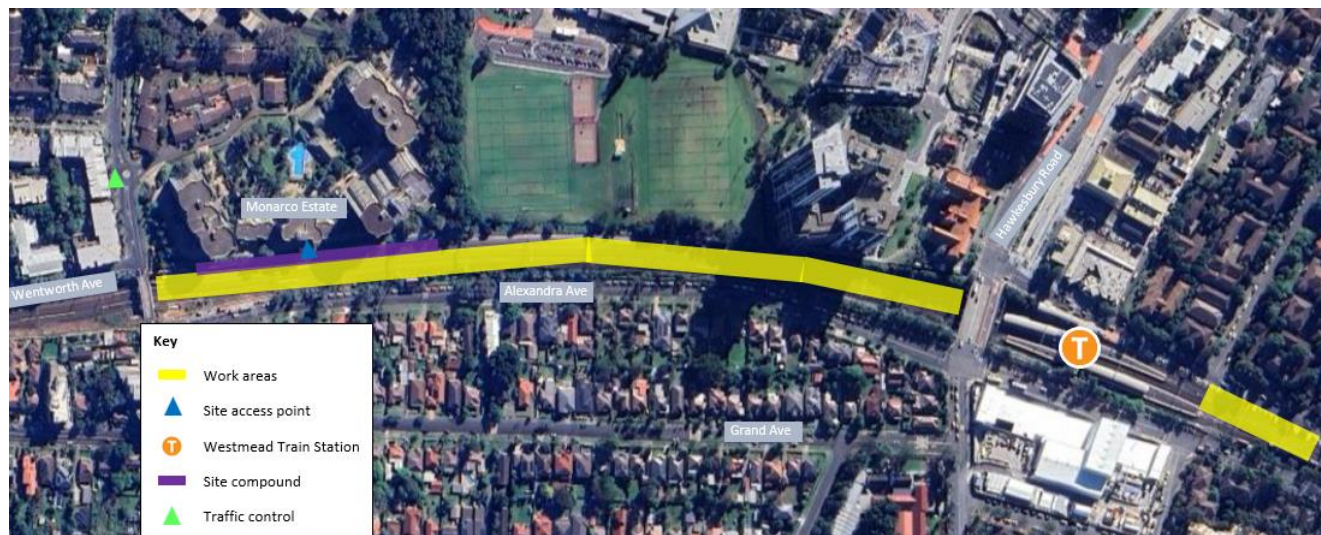
Location of work areas

Please note these maps are indicative only and not to scale.

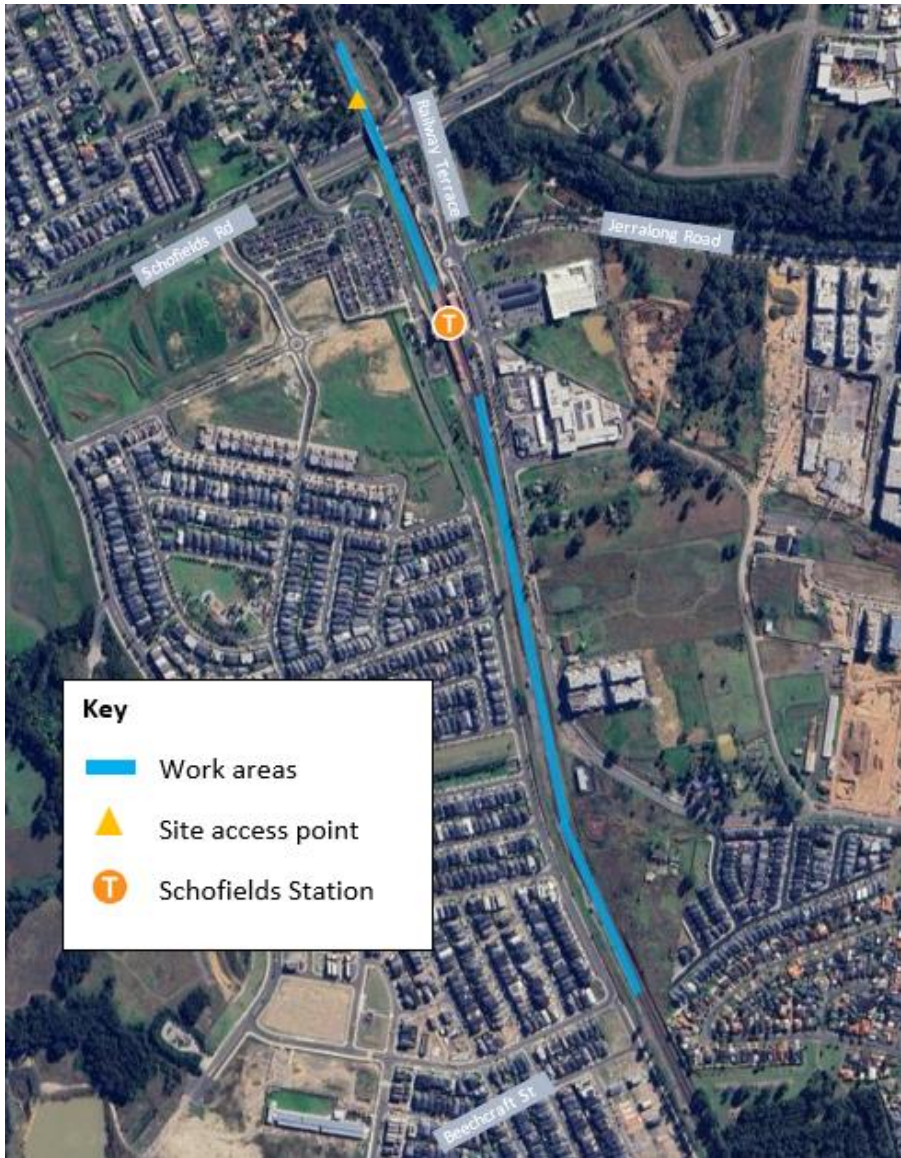
Seven Hills



Westmead



Schofields



Contact us



Project Infoline **1800 684 490**
24-hour Construction Response Line
1800 775 465



projects@transport.nsw.gov.au



yoursay.transport.nsw.gov.au/mtms



Visit the online portal go to
caportal.com.au/tfnsw/mtms



For the latest traffic updates:
Call 132 701, visit livetraffic.com or
download the app Live Traffic NSW



Interpreter service

For languages other than English call 131 450
Arabic • Greek • Hindi • Mandarin • Vietnamese

لطلب خدمة الترجمة الشفهية للغات غير الإنجليزية اتصل
بالرقم **131 450**

Για υπηρεσίες διερμηνείας σε άλλες γλώσσες εκτός από
τα Αγγλικά καλέστε το **131 450**

अंग्रेज़ी के अतिरिक्त अन्य भाषाओं के लिए दुभाषिया सेवा
131 450 पर कॉल करें

获取英语以外的其他语言口译协助服务可以致电**131 450**

Để có dịch vụ thông ngôn cho các ngôn ngữ khác tiếng
Anh, gọi số **131 450**

www.transport.nsw.gov.au/privacy-statement#Your_Privacy