

TRANSPORT

TPO01

Track Protection Officer Program – Level 1

Course brochure

RTO code 40657



OFFICIAL

Course details and entry requirements

About the course

The Track Protection Officer Level 1 Program is aimed at learners who are predominantly full-time employees of Sydney Trains, and Industry wide Rail Personnel wanting to become Protection Officers.

The program covers the training and assessment requirements that will enable you to perform tasks to correctly protect the worksite, and workers.

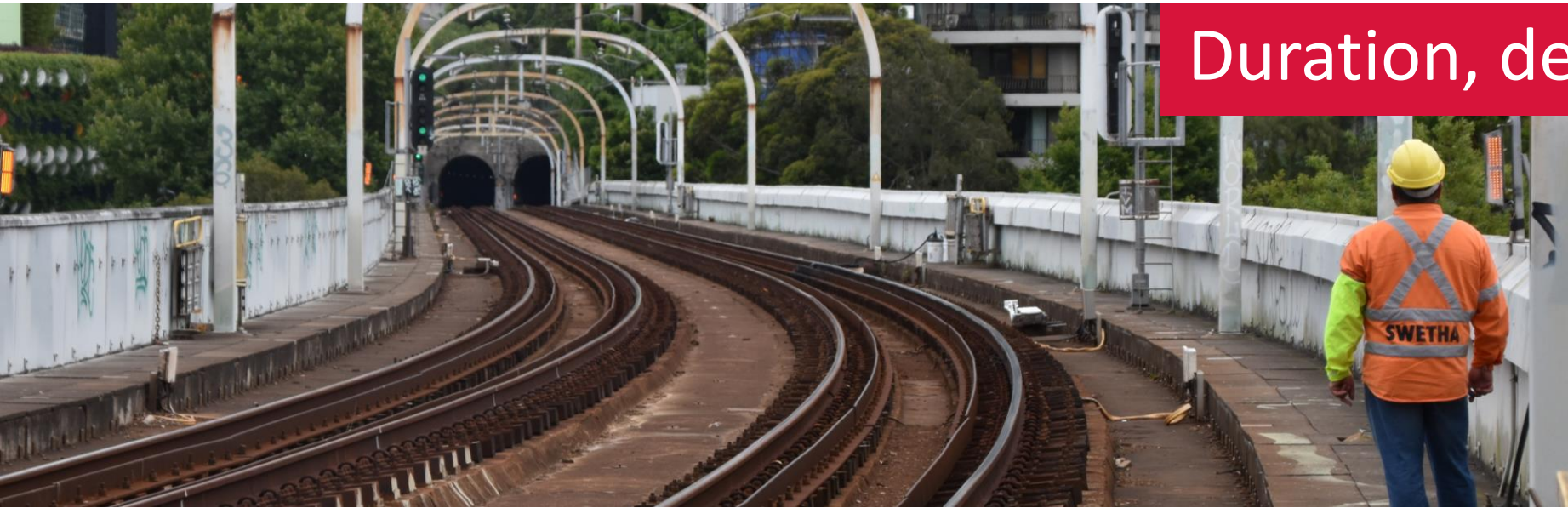
Entry requirements

Before you enrol in this course you must meet the following:

- Current RISI authorisation which aligns to TLIF2080 Safely access the rail corridor or TLIF0020 Safely access the rail corridor or SX52 Accessing the Rail Corridor (i.e. National Unit of Competency is not required if current RISI authorisation is held)
- Current Category 1 Medical Assessment
- Meet the ACSF Level 3 LLN requirements for the course



Duration, delivery, assessment and fees



Duration, delivery method and locations

The course is delivered over **6 months** via:

- Face-to-face learning and assessment at the Petersham Training Centre, Petersham NSW
- Supervised on the job training and assessment conducted at the workplace

Student fees

As an employee of Transport for NSW, your student fees will be paid by your agency (Sydney Trains) once you complete the training.

Contractors who wish to enrol into this skill set, please visit [Doing business with Transport](#)

Assessment requirements

You must successfully complete assessments as part of this course.

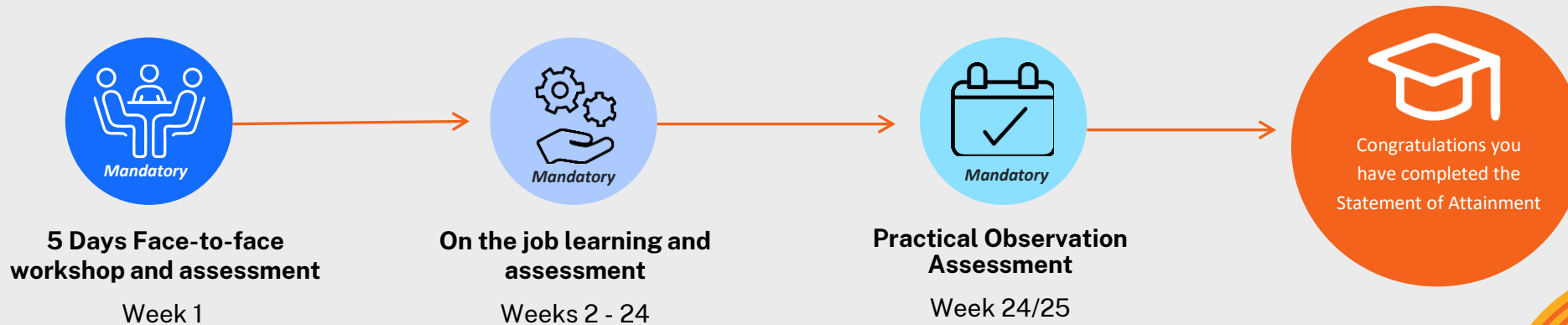
These will include:

- Written questions
- Practical demonstrations
- On the job workplace evidence

Program delivery model

Develop the skills and knowledge required to:

- Plan and prepare for implementation of track protection and document and conduct a pre-work brief accurately to work teams
- Undertake risk assessment on and off-site to identify hazards and implement appropriate controls, and calculate safe minimum warning time/sighting distance
- Assertively and consistently use safety critical communications when operating under network rules and procedures
- Perform duties of a lookout and safely handle and place Rail Track Signals, locate and accurately secure points correctly using points clip
- Implement various types of protection, including variations of: LOW and ASB and monitor worksite protection and implement contingency plans as changes occur on site
- Ensure protection is suspended/ended safely with workers and equipment clear of site and document and maintain Safeworking paperwork in accordance with required Network rules and procedures.



Course mandates:

- 1 Attend facilitated workshop: 5 Days
- 2 3x Written assessment tasks: 1 hour each
- 3 Assessment task 4: on the job 6 months
- 4 Assessment task 5: final practical 4 hours



Recognition of prior learning and credit transfers

As the rail industry is a safety critical environment, TfNSW has the discretion to accept or decline applications for recognition.

Recognition of prior learning

There may be some exemptions identified by the organisation where there are high risk/safety critical issues for specific unit/s of competency. Should this apply, learners will be informed as part of the RPL process.

RPL decisions will be made on an individual basis and in consultation with the learner and the organisation.

Credit transfers

If you have completed equivalent units from a Transport NSW Approved Training Provider, we will offer you a credit transfer.

Interstate completions will require undertaking training and assessment due to RailSafe requirements.

Nationally recognised Units of Competency

Upon completion

At the successful completion of this Track Protection Officer Program Level 1, you will be issued with a nationally recognised Statement of Attainment from the TLI – Transport and Logistics Training Package, which will include the following units of competency:

- TLIF0008 Apply safety critical communications in the rail environment
- TLIF2097 Use audible track warning devices
- TLIF0027 Perform Lookout duties
- TLIF0023 Conduct track protection assessment
- TLIL3082 Implement absolute signal blocking
- TLIW0007 Operate under track protection rules
- TLIW2037 Clip and secure points

Gaining further qualifications

The study pathway for a Protection Officer commences at Level 1 and progresses to Level 4.

The higher the level of study, the greater the level of the protection activities that can be undertaken by the Protection Officer.

