

Planning continues to reopen Terania Street, Lismore

April 2024



Transport for NSW acknowledges the Widjabul people of the Bundjalung Nation as the Traditional Custodians of the lands on which we work and pays respect to Elders past and present.

The NSW Government is continuing investigations to reopen Terania Street, North Lismore.

What is happening?

Since the closure of Terania Street following another bridge strike in early February, Transport for NSW undertook risk assessments to consider mitigation measures required to enable the road to be safely re-opened.

Several measures were recommended, with strapping and netting works to retain loose debris already completed.

Transport for NSW is currently working on the design of traffic calming options to restrict heavy vehicle access and reduce vehicle speeds in order to prevent future bridge strikes. Some of the options being considered include narrow safety barrier or kerb chicanes to reduce vehicle speeds and limit the size of vehicles able to access the bridge.

Removal of the bridge

Transport for NSW recently lodged an application with Heritage NSW relating to the removal of the Terania Street rail bridge.

This process is expected to take several months to work through the required legislative processes for heritage infrastructure. We will keep the community informed as this progresses.

We will continue to work closely with Lismore City Council and Heritage NSW on a longer term strategy for all non-operational rail bridges in Lismore.

What happens next?

Transport for NSW is looking to implement traffic calming measures in coming weeks, which involves safety treatments on the road surface to slow light vehicles and restrict heavy vehicles, with the aim to reopen Terania Street as soon as possible.

We will keep the community informed before we carry out any work on Terania Street.

In the meantime, the pedestrian footpath on Terania Street is now open.

Businesses on Terania Street

A section of Terania Street approaching the rail over road bridge is closed. However, businesses surrounding Terania Street are still open for business.

Transport for NSW thanks businesses for their patience while we carry out work to reopen Terania Street and encourages the community to continue to support local businesses along Terania Street.

Detour

A detour for all heavy and light vehicles is available via Wilson Street, Elliott Road and Ballina Road.

Light vehicles can access Terania and Bridge streets via Dawson and Woodlark streets, which are not suitable for heavy vehicles.

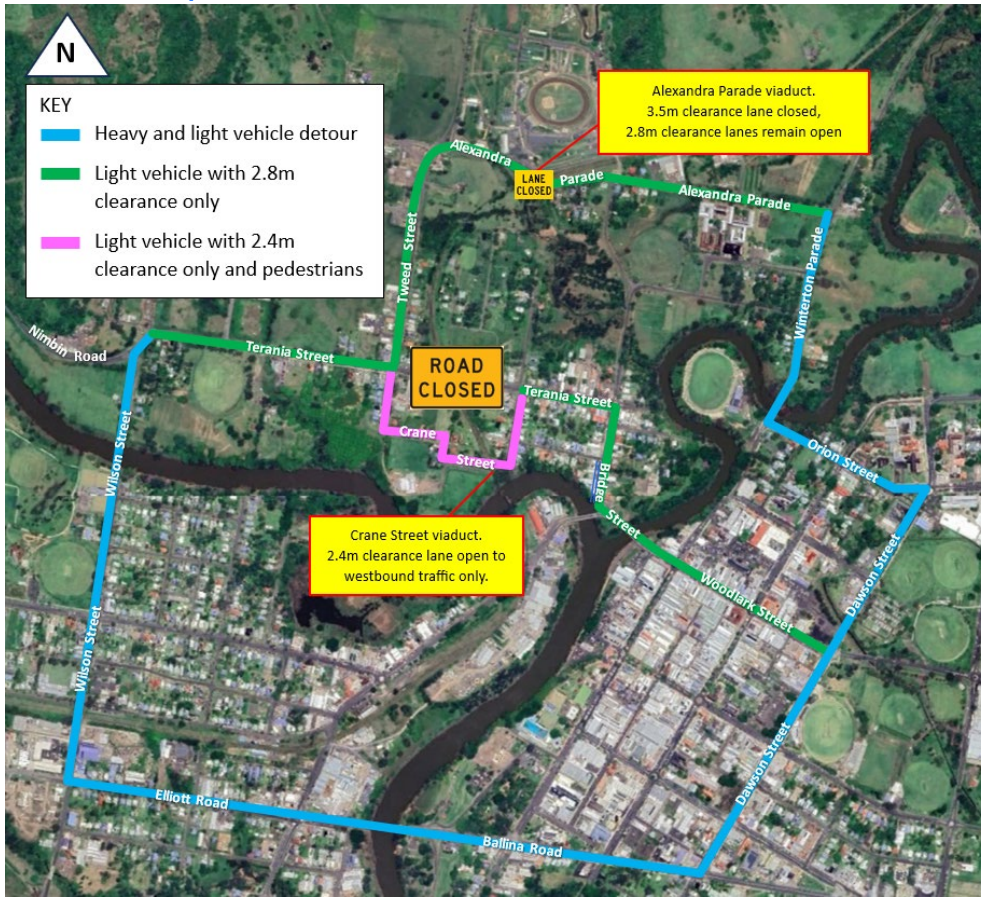
Light vehicles with maximum 2.4 metre height can access Tweed Street northbound from Terania Street via Pine and Crane streets.

The 3.5 metre clearance lane on Alexandra Parade remains closed. Detour for heavy vehicles travelling westbound is available via Winterton Parade, Orion Street, Dawson Street, Ballina Road, Elliott Road, Wilson Street, Terania Street and Tweed Street, vice versa for heavy vehicles travelling eastbound.

Motorists should allow up to 10 minutes extra travel time.

Heavy and light vehicle drivers should plan their journey and allow extra travel time, drive to the conditions and follow the directions of signs and traffic control.

Detour map



Please keep to speed limits and follow the direction of traffic controllers and signs.

For the latest traffic updates, you can call 132 701, visit livetraffic.com or download the Live Traffic NSW App.

Contact

If you have any questions, please contact Luke Lawler on 0407 952 119 or

Luke.Lawler@transport.nsw.gov.au.

Thank you for your patience during this important work.

Contact us



Luke.Lawler@transport.nsw.gov.au



For more information on this project, visit nswroads.work/TeraniaStLismore



PO Box 576
Grafton, NSW 2460



For the latest traffic updates:

Call 132 701, visit livetraffic.com or download the app Live Traffic NSW



Interpreter service

For languages other than English call 131 450
Arabic • Greek • Hindi • Mandarin • Vietnamese

لطلب خدمة الترجمة الشفهية للغات غير الإنجليزية اتصل
بالرقم **131 450**

Για υπηρεσίες διερμηνείας σε άλλες γλώσσες εκτός από
τα Αγγλικά καλέστε το **131 450**

अंग्रेज़ी के अतिरिक्त अन्य भाषाओं के लिए दुभाषिया सेवा
131 450 पर कॉल करें

获取英语以外的其他语言口译协助服务可以致电**131 450**

Để có dịch vụ thông ngôn cho các ngôn ngữ khác tiếng
Anh, gọi số **131 450**

www.transport.nsw.gov.au/privacy-statement#Your_Privacy