

Waterfall Stabling Yard and Platform Extension project

More Trains, More Services

March - April 2024



Transport for NSW acknowledges the Dharawal people of the Dharawal Nation as the Traditional Custodians of the lands on which we work and pays respect to Elders past and present.

The More Trains, More Services program is delivering platform extensions and rail asset upgrades between Sydney's CBD and the South Coast.

What work are we doing?

In March and April 2024, work at Waterfall includes:

- installation of a staff footbridge including stair columns, screens and posts
- extension of platform island on the northern side
- replacement of platform light poles
- concrete work
- installation of new footpath for staff access
- installation of new overhead wiring and signalling equipment, drainage and cable routes.

Standard construction hours

Standard construction hours are **7am to 6pm, Monday to Friday** and **8am to 1pm, Saturday**.

Weekend work

We will be completing work over the March long weekend, between **6pm Thursday 28 March** and **7am Tuesday 2 April 2024**.

This work is scheduled outside of standard construction hours during Sydney Trains

trackwork periods when no trains are running, minimising disruptions to commuter services and improving the safety of our construction team and customers.

Temporary changes to commuter car parking

To support construction activities at Waterfall, we require temporary use of about **42 commuter car spaces** from **5pm Monday 25 March until 5pm Thursday 4 April 2024**.

We will also require an **additional 26 car spaces** from **5pm Thursday 28 March until 5am Tuesday 2 April 2024**.

Please map below for location of reserved parking spaces.



Footbridge installation and temporary traffic impacts

To enable the safe installation of the staff footbridge, a 450-tonne crane will be set up on the Princes Highway, requiring the temporary closure of both southbound lanes from **8pm Saturday 30 March until 9am Sunday 31 March** (weather and road conditions permitting).

Southbound traffic will be switched to the northbound carriageway which will operate as a two-lane, two-way configuration over a length of 1.6 kilometres.

The southbound off-ramp will also be temporarily closed which will prevent direct access to Waterfall Station, including access to the Waterfall residential area.

Residents will instead be able to access the residential area through a controlled temporary right turn into Yanagang Street, and access to Waterfall Station will be diverted through Yanagang Street, Warabin Street and Kooraban Street.

Local street access by vehicles and rail replacement buses will be limited to 12.5 metres long.

The speed limit will be lowered to 40km/hour for the 1.6 kilometre stretch of changed traffic conditions.

If the footbridge installation cannot be completed on the Saturday night, the work will be rescheduled to the following night, with traffic lanes reopening at **9am Monday 1 April**.

Traffic control and signage will be in place to assist motorists with these changes.

Location of work area



Map identifying the lane crossover locations and 1.6 kilometre stretch of traffic changes

Parking restrictions

Parking restrictions on local streets will be in place **from 8pm Thursday 28 March until 10am Saturday 30 March** to allow for safe movements of rail replacement buses.

The northbound shoulder of the Princes Highway, usually reserved for parking, will also be closed.

Residents and motorists are reminded to use caution when travelling in the area and that they may expect delays accessing local streets. Please plan your trip in advance and observe for changed conditions and speed limits.

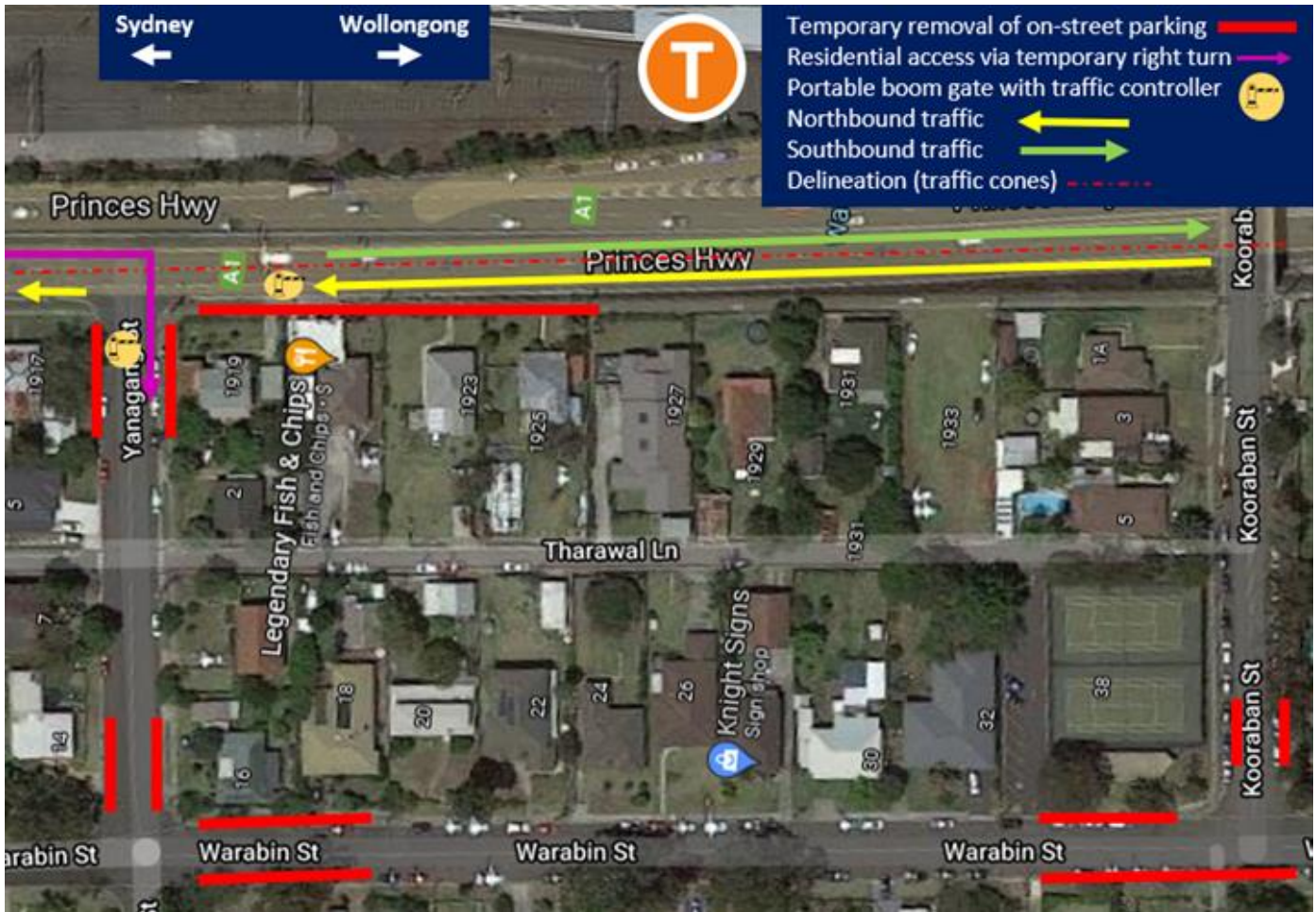
For up-to-date information about alternative transport services during these times, please visit transportnsw.info or call 131 500.

Managing our impacts

We understand construction activities may cause disruption to our closest neighbours, and every effort will be made to minimise the impacts where possible, including:

- turning off equipment when not in use and using non-tonal reversing alarms to reduce potential noise impacts to the surrounding community
- directing lighting away from residents

- installing signage and employing on-site traffic control to manage temporary traffic changes
- conducting on-site monitoring to ensure compliance with strict environmental conditions relating to noise, vibration and dust management.



Map identifying temporary changes to local traffic and parking

Contact us



Project Infoline **1800 684 490**
24-hour Construction Response Line
1800 775 465



projects@transport.nsw.gov.au



transport.nsw.gov.au/waterfall-stabling-yard-and-platform-extension



7 Harvest Street,
Macquarie Park, NSW 2200



Visit the online portal go to
caportal.com.au/tfnsw/mtms



Interpreter service

For languages other than English call 131 450
Arabic • Greek • Hindi • Mandarin • Vietnamese

لطلب خدمة الترجمة الشفهية للغات غير الإنجليزية اتصل
بالرقم **131 450**

Για υπηρεσίες διερμηνείας σε άλλες γλώσσες εκτός από
τα Αγγλικά καλέστε το **131 450**

अंग्रेज़ी के अतिरिक्त अन्य भाषाओं के लिए दुभाषिया सेवा
131 450 पर कॉल करें

获取英语以外的其他语言口译协助服务可以致电**131 450**

Để có dịch vụ thông ngôn cho các ngôn ngữ khác tiếng
Anh, gọi số **131 450**

www.transport.nsw.gov.au/privacy-statement#Your_Privacy



For the latest traffic updates:

Call 132 701, visit livetraffic.com or
download the app Live Traffic NSW