

## Appendix E – Construction Noise Estimator Tool results

## Proposed additional compound sites at White Bay

### 1. Proposal details

#### 1.1 Proposed scope of works

##### **Determined project REF scope of works**

The Western Distributor Smart Motorway project will introduce smart motorway technology (Level 1A) systems to the M1 corridor between Anzac Bridge, Rozelle and Milsons Point, North Sydney as shown in Figure 1. The key benefit of the project is improved network performance through:

- Improved management of traffic speeds
- Better incident detection and management
- Improved wayfinding and overall network control

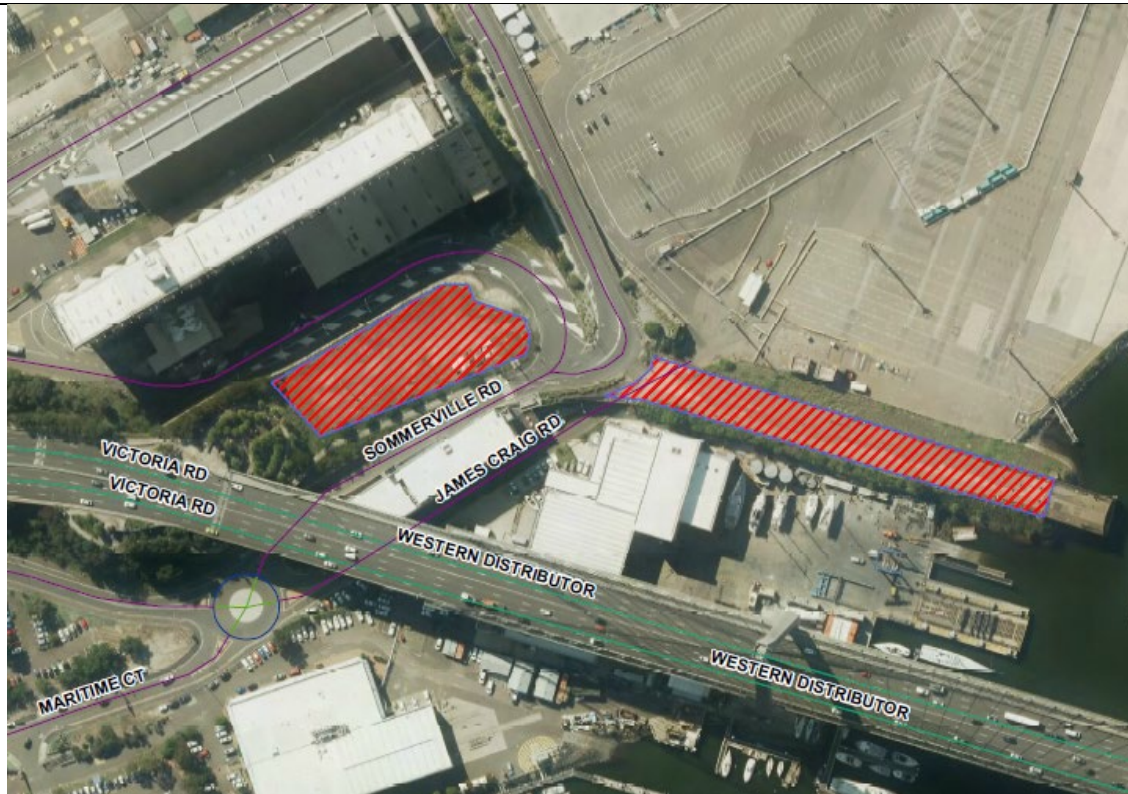
The Smart Motorway technology systems would include:

- Integrated speed and lane use signage (ISLUS) and Variable Speed Limit Signage (VSLS)
- Automatic incident detection technology
- Vehicle detection across the corridor
- On and off ramp detection
- Additional CCTV coverage
- Electronic message signs.

##### **Addendum REF scope of works (subject of this noise assessment)**

Transport for NSW proposes to modify the M1 Western Distributor Smart Motorway to include the use of compound sites located at Sommerville Road, Rozelle, and Old Glebe Island Bridge western abutment (proposed modification). The location of the proposed modifications is shown in Figure 1. It is intended that the Sommerville Road site would be the main compound facility, and that Glebe Island abutment would be a secondary facility which provides for vehicle parking.

# Construction noise assessment



**Figure 1** – Location of nominated additional compound site (hereafter referred to as the proposal area)

## 1.2 Duration of works

The proposed compound site would be required for the entire duration of the project work which is approximately 18 months.

## 1.3 Proposed activities and/or equipment. Identify the noisiest activity/plant

Heavy vehicles and HIAB crane would be used to deliver the site offices and amenities, construction plant where required and materials necessary for the work. The proposed compound operation is expected to require the use of a generator, light vehicles, heavy vehicles, mobile lights, an excavator, a backhoe and the potential storage of road construction plant.

The proposed compound site is a vacant block and is already fenced off, cleared, hardstand area that has previously been used as a compound facility. Both the establishment and operation would generate construction noise.

## 1.4 Proposed schedule, including out of hours works

The proposal would require works both during standard hours and outside of standard hours works.

Standard construction work hours are as follows:

- Monday to Friday: 7am – 6pm
- Saturday: 8am – 1pm
- Sunday and Public Holidays: No work

It is expected that operation of the proposed compound outside of standard hours would be necessary as most of the main construction works are limited to non-standard hours to minimise traffic impacts on the surrounding road network.

It is anticipated that work would be conducted for a maximum of five night shifts per week.

## 2. Noise estimator input data

### 2.1 Identify the noise sensitive receivers and the distance to the nearest receivers

The proposed compound sites are located within a largely industrial and commercial area on harbour front land adjacent to Anzac Bridge. The closest residential receivers are about 195 metres to the east, a high rise residential apartment block on Bowman Street. The Sommerville site is largely shielded by its location below Anzac Bridge approach, and adjacent to White Bay Silo structures. A visual representation of the sensitive receivers surrounding the proposal area and the compound site is provided in Figure 2.

# Construction noise assessment

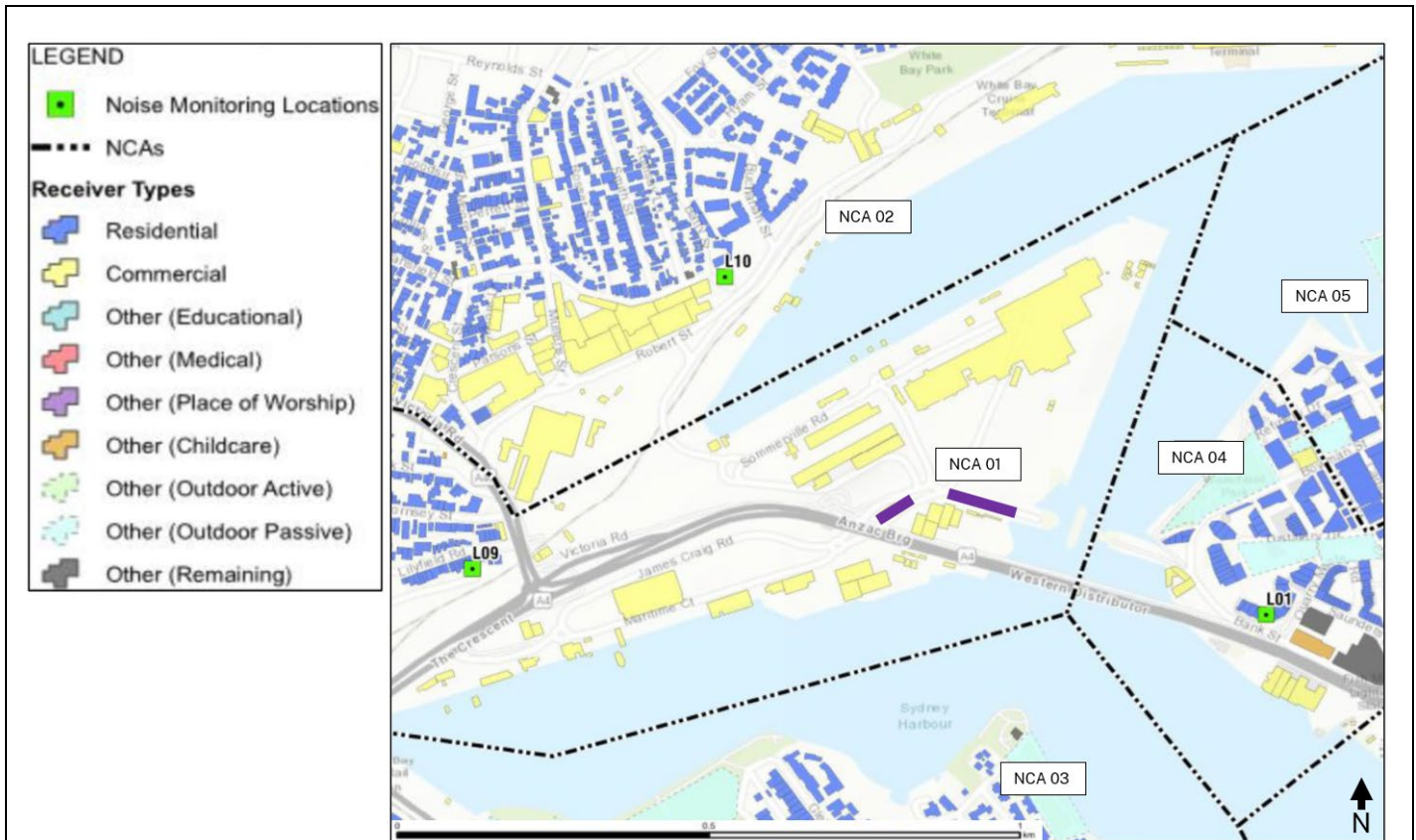


Figure 2 – Noise receiver types in the surrounding environment

## 2.2 Identify the noise area category. Give reasoning

The TfNSW construction noise estimator tool was used to assess the impacts during construction. The noise area category has been selected as **R5** for this proposal because of the proximity to a high traffic arterial motorway, ports facility and proximity to Sydney CBD. The existing background noise environment is dominated by road traffic noise from Western Distributor, as well as influences from Port activities and aircraft noise.

## 2.3 Indicate type of noise assessment selected (ie 'distance based (noisiest plant)' or 'distance based (scenario)'). Give reasoning

Based on the above listed methodology, a distance based (scenario) assessment was completed for the operation of the compound site. Plant and equipment estimates were used to calculate Total SPL and identification of noise management measures.

# Construction noise assessment

## 2.4 Identify the background noise levels (RBL or $L_{A90}$ ) and the noise management levels (NML or $L_{Aeq(15minute)}$ )

The table below provides the background noise levels (also referred to as Rating Background Level (RBL)) and noise management levels.

Noise Area Category		R5
<b>RBL or <math>L_{A90}</math><sup>1</sup> Background level (dB(A))</b>	Day	60
	Evening	55
	Night	50
<b><math>L_{Aeq(15minute)}</math> Noise Management Level<sup>2</sup> (dB(A))</b>	Day	70
	Day (OOHW)	65
	Evening	60
	Night	55

Notes: <sup>1</sup>  $L_{A90}$  = Background noise level

<sup>2</sup> Noise Management Level for works during *standard hours* = Background level plus 10dB(A)

Noise Management Level (NML) for *out of hours works* = Background level plus 5dB(A).

## 2.5 Determine if receivers are in line of sight or behind the barrier (noise wall or row of buildings)

### Distance based (scenario) using 'compound operation'

The first row of residential receivers is located in line of sight of construction activity, at about 195 metres to the east on the opposite side of Blackwattle Bay harbour (apartment towers next to Glebe Island eastern abutment). For second row receivers and beyond, the 'behind substantial solid barrier' option was selected. The barriers included the elevated Anzac Bridge western approach, and White Bay silos. The outcome of the assessment is recorded in section 3 below.

Refer to appended Construction noise estimator tool worksheets for the construction plant list used for the assessment.

For the first row of buildings:

<b>Scenario</b>	Compound operation
<b>Is there line of sight to receiver?</b>	Yes

For the second and all further rows of buildings:

<b>Scenario</b>	Compound operation
<b>Is there line of sight to receiver?</b>	No (behind substantial solid barrier)



# Construction noise assessment

## 3. Noise estimator output data

### 3.1 Predicted noise levels

The noise estimator tool produced predicted noise levels at different locations for various receivers. To assist with the assessment common residential receivers were grouped into noise catchment areas (NCA) for construction noise assessment. NCAs are the areas that are affected by the same works and located at similar distances from the noise generating activity. For each of the NCA affected distances (or the distances up to which noise levels are expected to exceed the Noise Management Level) are recorded in the tables below together with the predicted noise levels.

#### DISTANCE BASED (SCENARIO) ASSESSMENT

##### Compound operation – DAY (urban area)

Catchment distances (Noise impact areas)	NML, dB(A)	Predicted noise levels dB(A)	Recommended measures mitigation
<b>NCA1</b> No line of sight = 15m. Line of sight = 40m	70	75	N, PC, RO

Noise affected distance is 40m for line of sight, and 15m for receivers with no line of sight to the noise source. The highly noise affected (>75dB(A)) distance is 25m for line of sight, 5m for no line of sight.

##### Compound operation – DAY (over water)

Catchment distances (Noise impact areas)	NML, dB(A)	Predicted noise levels dB(A)	Recommended measures mitigation
<b>NCA1</b> No line of sight = 25m. Line of sight = 50m	70	75	N, PC, RO

Noise affected distance is 50m for line of sight, and 25m for receivers with no line of sight to the noise source. The highly noise affected (>75dB(A)) distance is 25m for line of sight, 5m for no line of sight.

# Construction noise assessment

## Compound operation – NIGHT (urban area) White Bay urban area

Catchment distances (Noise impact areas)	NML, dB(A)	Predicted noise levels dB(A)	Recommended mitigation measures
<b>NCA1</b> No line of sight = 5m. Line of sight = 15m	55	70	AA, N, SN, PC, R2, DR
<b>NCA2</b> No line of sight = 15m Line of sight = 40m	55	60	N, SN, PC, R2, DR
<b>NCA3</b> No line of sight = 40m Line of sight = 130m	55	50	N, R2, DR
<b>NCA4</b> No line of sight = 75m Line of sight = 200m	55	45	N

Noise affected distance is 200m for line of sight, and 75m for receivers with no line of sight to the noise source. The highly noise affected (>75dB(A)) distance is 25m for line of sight, 5m for no line of sight.

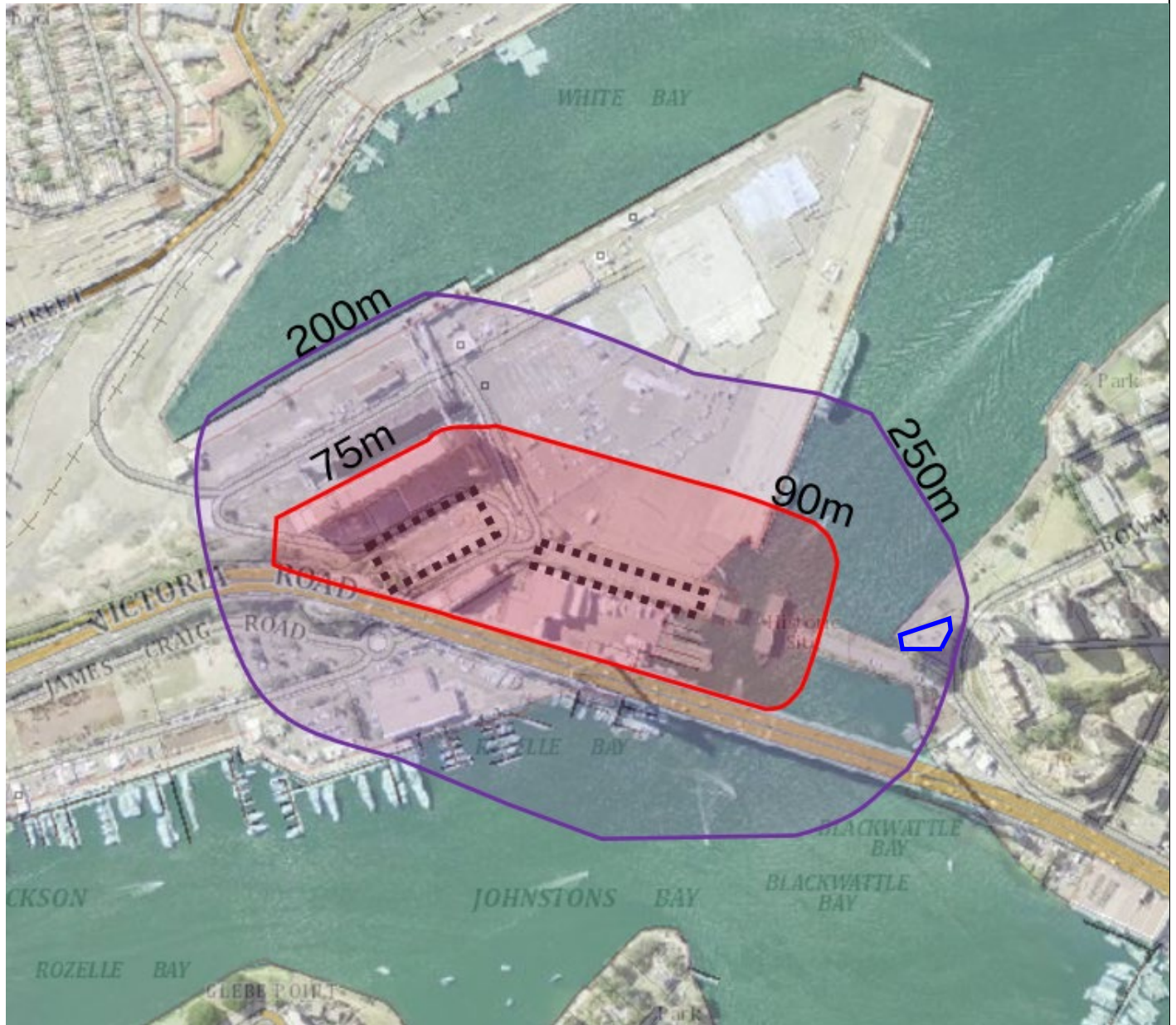
## Compound operation – NIGHT (over water) Blackwattle Bay harbour

Catchment distances (Noise impact areas)	NML, dB(A)	Predicted noise levels dB(A)	Recommended mitigation measures
<b>NCA1</b> No line of sight = 5m. Line of sight = 15m	55	80	AA, N, SN, PC, R2, DR
<b>NCA2</b> No line of sight = 15m Line of sight = 50m	55	70	N, SN, PC, R2, DR
<b>NCA3</b> No line of sight = 50m Line of sight = 155m	55	60	N, R2, DR
<b>NCA4</b> No line of sight = 90m Line of sight = 250m	55	55	N

Noise affected distance is 250m for line of sight, and 90m for receivers with no line of sight to the noise source. The highly noise affected (>75dB(A)) distance is 25m for line of sight, 5m for no line of sight.



# Construction noise assessment



**Figure 3** – Noise catchments for compound operation at **NIGHT**

Figure 3 is based on noise impact at night (OOHW2) to represent worst case noise impacts. This would reduce to 50m noise affected distance during standard hours, where there are no residential receivers.

Figure 3 also presents a worst case scenario as it assumes compound operations at Glebe Island Bridge. However, it is intended that main compound activities occur at the Sommerville Road site and that the Glebe Island Bridge location would provide for vehicle parking. Therefore the actual noise affected area shown around Glebe Island Bridge may be lesser than those predicted here.

# Construction noise assessment

**Note** – this does not consider cumulative impacts of the potential other concurrent construction works in the area. Verification monitoring will be required to assess the accuracy of noise impacts from compound operation and mitigation measures reviewed where exceedances are identified.

**Note** – Parts of the White Bay area have been used by others as a construction compound for other projects in the area. The consecutive use of the site for multiple projects may further contribute to construction fatigue for receivers in the area. Targeted community engagement will be important for the proposed use of this site.

## Sleep disturbance

Sleep disturbance of sensitive receivers was considered for the compound operation scenario as it is expected to occur at night time. With line of sight, the noise affected distance for compound operation was predicted to be 110m (110m over water, or 95m in urban areas). There are no residential receivers within this area.

Line of sight to receiver?	Affected distance (m)	NML, dB(A)	Sleep disturbance $L_{A_{max}}$ upper limit
In line of sight	110	55	65
Behind the rows of buildings	30	55	65

## 4. Review of additional mitigation measures

### 4.1 Review of additional mitigation measures to determine which are feasible and reasonable to apply

- Letterbox drop (**N = notification**) has been recommended for receivers within 250m (purple catchment area) where noise impacts may be noticeable. The noise estimator tool indicates that **specific notification (SN)** should be delivered to the residences within 50m radius around the site compound site though there are no residential receivers within this boundary. A single coordinated message should be delivered to the affected community.
- **Phone calls (PC)** detailing relevant information made to identified/affected stakeholders within 50m of the compound site are not considered practical due to high density of receivers which includes apartment buildings.
- **Respite offer (RO)** should be considered where there are high noise and vibration generating activities near receivers. RO proposes that works should be carried out in continuous blocks that do not exceed 3 hours each, with a minimum respite period of one hour between each block. The purpose of such offer is to provide residents with respite from an ongoing impact. However, this is not applicable to projects that are predominantly constructed at night as this would only cause nuisance to the residences. As such this mitigation offer is not recommended.
- Works are unable to comply with **respite condition 2 (R2)** which implies that works should be limited to two consecutive nights except for where there is a **Duration Respite (DR)**. For night works these periods of work should be separated by not less than one week and 6 nights per month.

# Construction noise assessment

- **Duration Respite (DR)** is offered when works are unable to comply with R2. Where it can be strongly justified it may be beneficial to increase the work duration (number of evenings or nights worked) so that the project can be completed more quickly. This allows for the schedule to condense the night work into five night blocks to reduce the overall works duration. Duration respite is proposed for the compound operation consistent with the overarching project works.
- **Alternate accommodation (AA)** may be offered to residents living in close proximity to construction works that are likely to experience highly intrusive noise levels. There are no receivers within the 15 metre highly intrusive impact area identified for consideration of AA. Alternate accommodation is not considered feasible or reasonable to implement. This would be reviewed in response to receiving complaints.

## 4.2 Additional mitigation measures that are feasible and reasonable to apply

Based on the review of additional mitigation measures in section 4.1 the following additional safeguards are considered feasible and reasonable to implement to the proposal in addition to standard mitigation measures:

1. Letterbox drop (**N = notification**) for receivers within 250m radius. This may be targeted notification to the apartment block identified within this area. Notifications are to include duration of work activity, proposed start date, duration and hours of use, and contact telephone number. Notification will be sent a minimum of 7 calendar days prior to the start of works.
2. As works are unable to comply with **respite condition 2 (R2)**, it is proposed to complete works under **Duration Respite (DR)**. This aligns with the overarching construction project works which is subject to restrictions from ROLs and works at night to minimise impact to the motorway. This condenses the schedule of night work into five consecutive night blocks to reduce the overall works duration.
3. **Verification (V)** monitoring is proposed to review actual measured noise impacts against noise predictions. Noise management levels and management measures would be reviewed in response to monitoring results.

Please pick from drop-down list in orange cells

Noise area category		85
RBL or L <sub>90</sub> Background level (dB(A))	Day	60
	Evening	55
	Night	50
L <sub>Aeq</sub> (15minute) Noise Management Level (dB(A))	Day	70
	Day (OOHW)	65
	Evening	60
	Night	55
Scenario		Compound operation
Is there line of sight to receiver?		Yes

## Distanced Based Assessment (Construction Scenario)

### Steps for Screening Assessment:

- Schedule noisy works to occur in standard hours where possible or before 11pm and implement Standard Measures.
  - Select the representative noise area category. The worksheet titled 'Representative Noise Environ.' provides a number of examples to help select the noise area category.
  - Select the scenario. If not found in drop-down list, refer to 'Source List' and select a representative scenario with similar plant combination.
  - Is there line of sight to receiver? Select the appropriate scenario from the drop down list.
- Identify and implement standard mitigation measures where feasible and reasonable. Include any shielding implemented as part of the standard mitigation measures by changing the selection in the 'Is there line of sight to receiver' drop-down list. Solid barrier can be in the form of road cutting, solid construction hoarding, acoustic curtain, timber lapped and capped fence, shipping container, site office, etc. Please note that vegetation and trees are not considered to be a form of solid barrier and any gaps would compromise the acoustic integrity of the solid barrier.
- Determine if there are any receivers (both residential and non-residential receivers) within the affected distance for each relevant time period. Consider background noise measurements to check assumption in Step #2 if:
    - there are many affected receivers and the impact duration at any one receiver is more than 3 weeks; or
    - there are a few affected receivers and the impact duration at any one receiver is more than 6 weeks;
  - Note that consideration need to be given to the construction staging plan when determining impact duration.
  - Identify if there are any receivers within the additional mitigation measures distances and identify feasible and reasonable measures at each receiver
  - Where night works are involved, identify sleep disturbance affected distance.
  - Document the outcomes of these steps.

Abbreviation	Measure
N	Notification
SN	Specific notifications
PC	Phone calls
IB	Individual briefings
RO	Respite offer
R1	Respite period 1
R2	Respite period 2
DR	Duration respite
AA	Alternative accommodation
V	Verification

Note that spot check verification of noise levels and individual briefings are not required for projects with less than 3 weeks impact duration

Residential receiver		L <sub>Aeq</sub> (15minute) noise level above background (L <sub>A90</sub> )												L <sub>Aeq</sub> (15minute) 75 dB(A) or greater (Highly affected)			Sleep disturbance L <sub>max</sub> 65 dB(A)
		5 to 10 dB(A)			10 to 20 dB(A)			20 to 30 dB(A)			> 30 dB(A)						
		Noticeable			Clearly audible			Moderately intrusive			Highly intrusive						
		Measures	Within distance (m)	Mitigation level (dB(A))	Measures	Within distance (m)	Mitigation level (dB(A))	Measures	Within distance (m)	Mitigation level (dB(A))	Measures	Within distance (m)	Mitigation level (dB(A))	Measures	Within distance (m)	Mitigation level (dB(A))	Affected distance (m)
Undeveloped green fields, rural areas with isolated dwellings	Day		35					N, PC, RO	20	75	N, PC, RO	20	75	N, PC, RO	20	75	
	Day (OOHW)		65		N, R1, DR	35	70	N, R1, DR, PC, SN	10	80	N, R1, DR, PC, SN	10	80	N, PC, RO		75	
	Evening		115		N, R1, DR	65	65	N, R1, DR	20	75	N, R1, DR, PC, SN	10	80	N, PC, RO		75	
	Night		170		N, R2, DR	115	60	N, PC, SN, R2, DR	35	70	AA, N, PC, SN, R2, DR	10	80	N, PC, RO	20	75	85
	Highly Affected	N	170	55										N, PC, RO	20	75	
Developed settlements (urban and suburban)	Day		40					N, PC, RO	25	75	N, PC, RO	25	75	N, PC, RO	25	75	
	Day (OOHW)		75		N, R1, DR	40	70	N, R1, DR	15	80	N, R1, DR, PC, SN	5	85	N, PC, RO		75	
	Evening		130		N, R1, DR	75	65	N, R1, DR	25	75	N, R1, DR, PC, SN	5	85	N, PC, RO		75	
	Night		200		N, R2, DR	130	60	N, PC, SN, R2, DR	40	70	AA, N, PC, SN, R2, DR	15	80	N, PC, RO	25	75	95
	Highly Affected	N	200	55										N, PC, RO	25	75	
Propagation across a valley / over water	Day		50					N, PC, RO	25	75	N, PC, RO	25	75	N, PC, RO	25	75	
	Day (OOHW)		90		N, R1, DR	50	70	N, R1, DR	15	80	N, R1, DR, PC, SN	5	85	N, PC, RO		75	
	Evening		155		N, R1, DR	90	65	N, R1, DR	25	75	N, R1, DR, PC, SN	5	85	N, PC, RO		75	
	Night		250		N, R2, DR	155	60	N, PC, SN, R2, DR	50	70	AA, N, PC, SN, R2, DR	15	80	N, PC, RO	25	75	110
	Highly Affected	N	250	55										N, PC, RO	25	75	

Non-residential receiver		L <sub>Aeq</sub> (15minute) noise level above NML												L <sub>Aeq</sub> (15minute) 75 dB(A) or greater (Highly affected)		
Undeveloped green fields, rural areas with isolated dwellings		Standard hours			<10 dB(A)			10 to 20 dB(A)								
		Period	NML	Affected distance (m)	Measure	Within distance (m)	Mitigation level (dB(A))	Measure	Within distance (m)	Mitigation level (dB(A))	Measure	Within distance (m)	Mitigation level (dB(A))			
Classroom at schools and other educational institutions		Day	55	170				N	65	65	N, PC, RO	20	75			
Hospital wards and operating theatres		Day	65	65							N, PC, RO	20	75			
Place of worship		Day	55	170				N	65	65	N, PC, RO	20	75			
Active recreation		Day	65	65							N, PC, RO	20	75			
Passive recreation		Day	60	115				N	35	70	N, PC, RO	20	75			
Industrial premise		Day	75	30							N, PC, RO	20	75			
Offices, retail outlets		Day	70	35							N, PC, RO					

		L <sub>Aeq</sub> (15minute) noise level above NML														
		OOHW			< 5 dB(A)			5 to 15 dB(A)			15 to 25 dB(A)			> 25 dB(A)		
		Period	NML	Affected distance (m)	Measure	Within distance (m)	Mitigation level (dB(A))	Measure	Within distance (m)	Mitigation level (dB(A))	Measure	Within distance (m)	Mitigation level (dB(A))	Measure	Within distance (m)	Mitigation level (dB(A))
Hospital wards and operating theatres		Evening	65	65				N, R1, DR	35	70	N, R1, DR	11	80	N, R1, DR, PC, SN	4	90
		Night	65	65	N	65	65	N, R2, NR	35	70	N, PC, SN, R2, DR	11	80	AA, N, PC, SN, R2, DR	4	90
Place of worship		Evening	55	170				N, R1, DR	115	60	N, R1, DR	35	70	N, R1, DR, PC, SN	11	80
		Night	55	170	N	170	55	N, R2, NR	115	60	N, PC, SN, R2, DR	35	70	AA, N, PC, SN, R2, DR	11	80
Active recreation		Evening	65	65				N, R1, DR			N, R1, DR			N, R1, DR, PC, SN	4	90
Passive recreation		Evening	60	115				N, R1, DR			N, R1, DR			N, R1, DR, PC, SN	6	85
Industrial premise		Evening	75	20				N, R1, DR			N, R1, DR			N, R1, DR, PC, SN	1	100
		Night	75	20	N	20	75	N, R2, NR	11	80	N, PC, SN, R2, DR	4	90	AA, N, PC, SN, R2, DR	1	100
Offices, retail outlets		Evening	70	35				N, R1, DR	20	75	N, R1, DR	6	85	N, R1, DR, PC, SN	2	95
		Night	70	35	N	35	70	N, R2, NR	20	75	N, PC, SN, R2, DR	6	85	AA, N, PC, SN, R2, DR	2	95

Non-residential receiver		L <sub>Aeq</sub> (15minute) noise level above NML												L <sub>Aeq</sub> (15minute) 75 dB(A) or greater (Highly affected)		
Developed settlements (urban and suburban)		Standard hours			<10 dB(A)			10 to 20 dB(A)								
		Period	NML	Affected distance (m)	Measure	Within distance (m)	Mitigation level (dB(A))	Measure	Within distance (m)	Mitigation level (dB(A))	Measure	Within distance (m)	Mitigation level (dB(A))			
Classroom at schools and other educational institutions		Day	55	200				N	75	65	N, PC, RO	25	75			
Hospital wards and operating theatres		Day	65	75							N, PC, RO	25	75			
Place of worship		Day	55	200				N	75	65	N, PC, RO	25	75			
Active recreation		Day	65	75							N, PC, RO	25	75			
Passive recreation		Day	60	130				N	40	70	N, PC, RO	25	75			
Industrial premise		Day	75	25							N, PC, RO	25	75			
Offices, retail outlets		Day	70	40							N, PC, RO	25	75			

		L <sub>Aeq</sub> (15minute) noise level above NML														
		OOHW			< 5 dB(A)			5 to 15 dB(A)			15 to 25 dB(A)			> 25 dB(A)		
		Period	NML	Affected distance (m)	Measure	Within distance (m)	Mitigation level (dB(A))	Measure	Within distance (m)	Mitigation level (dB(A))	Measure	Within distance (m)	Mitigation level (dB(A))	Measure	Within distance (m)	Mitigation level (dB(A))
Hospital wards and operating theatres		Evening	65	75				N, R1, DR	40	70	N, R1, DR	14	80	N, R1, DR, PC, SN	4	90
		Night	65	75	N	75	65	N, R2, NR	40	70	N, PC, SN, R2, DR	14	80	AA, N, PC, SN, R2, DR	4	90
Place of worship		Evening	55	200				N, R1, DR	130	60	N, R1, DR	40	70	N, R1, DR, PC, SN	14	80
		Night	55	200	N	200	55	N, R2, NR	130	60	N, PC, SN, R2, DR	40	70	AA, N, PC, SN, R2, DR	14	80
Active recreation		Evening	65	75				N, R1, DR	40	70	N, R1, DR	14	80	N, R1, DR, PC, SN	4	90
Passive recreation		Evening	60	130				N, R1, DR	75	65	N, R1, DR	25	75	N, R1, DR, PC, SN	8	85
Industrial premise		Evening	75	25				N, R1, DR	14	80	N, R1, DR	4	90	N, R1, DR, PC, SN	1	100
		Night	75	25	N	25	75	N, R2, NR	14	80	N, PC, SN, R2, DR	4	90	AA, N, PC, SN, R2, DR	1	100
Offices, retail outlets		Evening	70	40				N, R1, DR	25	75	N, R1, DR	8	85	N, R1, DR, PC, SN	3	95
		Night	70	40	N	40	70	N, R2, NR	25	75	N, PC, SN, R2, DR	8	85	AA, N, PC, SN, R2, DR	3	95

Non-residential receiver Propagation across a valley / over water		L <sub>Aeq</sub> (15minute) noise level above NML											
		Standard hours			<10 dB(A)			10 to 20 dB(A)			L <sub>Aeq</sub> (15minute) 75 dB(A) or greater (Highly affected)		
		Period	NML	Affected distance (m)	Measure	Within distance (m)	Mitigation level (dB(A))	Measure	Within distance (m)	Mitigation level (dB(A))	Measure	Within distance (m)	Mitigation level (dB(A))
Classroom at schools and other educational institutions		Day	55	250				N	75	65	N, PC, RO	25	75
Hospital wards and operating theatres		Day	65	90							N, PC, RO	25	75
Place of worship		Day	55	250				N	75	65	N, PC, RO	25	75
Active recreation		Day	65	90							N, PC, RO	25	75
Passive recreation		Day	60	155				N	40	70	N, PC, RO	25	75
Industrial premise		Day	75	25							N, PC, RO	25	75
Offices, retail outlets		Day	70	50							N, PC, RO	25	75



## Distanced Based Assessment (Construction Scenario)

### Steps for Screening Assessment:

- Schedule noisy works to occur in standard hours where possible or before 11pm and implement Standard Measures.
- Select the representative noise area category. The worksheet titled "Representative Noise Environ" provides a number of examples to help select the noise area category.
- Select the scenario. If not found in drop-down list, refer to "Source List" and select a representative scenario with similar plant combination.
- Is there line of sight to receiver? Select the appropriate scenario from the drop down list.

Identify and implement standard mitigation measures where feasible and reasonable. Include any shielding implemented as part of the standard mitigation measures by changing the selection in the 'Is there line of sight to receiver' drop-down list. Solid barrier can be in the form of road cutting, solid construction hoarding, acoustic curtain, timber lapped and capped fence, shipping container, site office, etc. Please note that vegetation and trees are not considered to be a form of solid barrier and any gaps would compromise the acoustic integrity of the solid barrier.

- Determine if there are any receivers (both residential and non-residential receivers) within the affected distance for each relevant time period. Consider background noise measurements to check assumption in Step #2 if:
  - there are many affected receivers and the impact duration at any one receiver is more than 3 weeks; or
  - there are a few affected receivers and the impact duration at any one receiver is more than 6 weeks;

Note that consideration need to be given to the construction staging plan when determining impact duration.

- Identify if there are any receivers within the additional mitigation measures distances and identify feasible and reasonable measures at each receiver

- Where night works are involved, identify sleep disturbance affected distance.

- Document the outcomes of these steps.

Abbreviation	Measure
N	Notification
SN	Specific notifications
PC	Phone calls
IB	Individual briefings
RO	Respite offer
R1	Respite period 1
R2	Respite period 2
DR	Duration respite
AA	Alternative accommodation
V	Verification

Note that spot check verification of noise levels and individual briefings are not required for projects with less than 3 weeks impact duration

### Residential receiver

		Affected distance (m)	L <sub>Aeq</sub> (15minute) noise level above background (L <sub>A0</sub> )												L <sub>Aeq</sub> (15minute) 75 dB(A) or greater (Highly affected)			Sleep disturbance L <sub>max</sub> 65 dB(A)
			5 to 10 dB(A)			10 to 20 dB(A)			20 to 30 dB(A)			> 30 dB(A)						
			Noticeable		Mitigation level (dB(A))	Clearly audible		Mitigation level (dB(A))	Moderately intrusive		Mitigation level (dB(A))	Highly intrusive		Mitigation level (dB(A))				
Measures	Within distance (m)	Measures	Within distance (m)	Measures		Within distance (m)	Measures		Within distance (m)	Measures		Within distance (m)						
Undeveloped green fields, rural areas with isolated dwellings	Day	10																
	Day (OOHW)	20																
	Evening	35																
	Night	65	N	65	55	N, R2, DR	35	60	N, PC, SN, R2, DR	10	70	AA, N, PC, SN, R2, DR	#N/A	80	N, PC, RO	5	75	
Developed settlements (urban and suburban)	Day	15																
	Day (OOHW)	25																
	Evening	40																
	Night	75	N	75	55	N, R2, DR	40	60	N, PC, SN, R2, DR	15	70	AA, N, PC, SN, R2, DR	#N/A	80	N, PC, RO	5	75	
Propagation across a valley / over water	Day	15																
	Day (OOHW)	25																
	Evening	50																
	Night	80	N	90	55	N, R2, DR	60	60	N, PC, SN, R2, DR	15	70	AA, N, PC, SN, R2, DR	#N/A	80	N, PC, RO	5	75	

### Non-residential receiver

Undeveloped green fields, rural areas with isolated dwellings				L <sub>Aeq</sub> (15minute) noise level above NML											L <sub>Aeq</sub> (15minute) 75 dB(A) or greater (Highly affected)		
				Standard hours			<10 dB(A)			10 to 20 dB(A)							
				Period	NML	Affected distance (m)	Measure	Within distance (m)	Mitigation level (dB(A))	Measure	Within distance (m)	Mitigation level (dB(A))	Measure	Within distance (m)	Mitigation level (dB(A))		
Classroom at schools and other educational institutions				Day	55	65				N	20	65	N, PC, RO	5	75		
Hospital wards and operating theatres				Day	65	20							N, PC, RO	5	75		
Place of worship				Day	55	65				N	20	65	N, PC, RO	5	75		
Active recreation				Day	65	20							N, PC, RO	5	75		
Passive recreation				Day	60	35				N	10	70	N, PC, RO	5	75		
Industrial premise				Day	75	5							N, PC, RO				
Offices, retail outlets				Day	70	10							N, PC, RO				

			L <sub>Aeq</sub> (15minute) noise level above NML												
OOHW			< 5 dB(A)			5 to 15 dB(A)			15 to 25 dB(A)			> 25 dB(A)			
Period	NML	Affected distance (m)	Measure	Within distance (m)	Mitigation level (dB(A))	Measure	Within distance (m)	Mitigation level (dB(A))	Measure	Within distance (m)	Mitigation level (dB(A))	Measure	Within distance (m)	Mitigation level (dB(A))	
Hospital wards and operating theatres	Evening	65	20			N, R1, DR	10	70	N, R1, DR	3	80	N, R1, DR, PC, SN	1	90	
	Night	65	20	N	20	65	N, R2, NR	10	70	N, PC, SN, R2, DR	3	80	AA, N, PC, SN, R2, DR	1	90
	Evening	55	65				N, R1, DR	35	60	N, R1, DR	10	70	N, R1, DR, PC, SN	3	80
Place of worship	Night	55	65	N	65	55	N, R2, NR	35	60	N, PC, SN, R2, DR	10	70	AA, N, PC, SN, R2, DR	3	80
	Evening	65	20				N, R1, DR			N, R1, DR			N, R1, DR, PC, SN	1	90
Active recreation	Evening	60	35				N, R1, DR			N, R1, DR			N, R1, DR, PC, SN	2	85
	Evening	75	5				N, R1, DR			N, R1, DR			N, R1, DR, PC, SN	0	100
Industrial premise	Night	75	5	N	5	75	N, R2, NR	3	80	N, PC, SN, R2, DR	1	90	AA, N, PC, SN, R2, DR	0	100
	Evening	70	10				N, R1, DR	5	75	N, R1, DR	2	85	N, R1, DR, PC, SN	1	95
Offices, retail outlets	Night	70	10	N	10	70	N, R2, NR	5	75	N, PC, SN, R2, DR	2	85	AA, N, PC, SN, R2, DR	1	95

### Non-residential receiver

Developed settlements (urban and suburban)				L <sub>Aeq</sub> (15minute) noise level above NML										L <sub>Aeq</sub> (15minute) 75 dB(A) or greater (Highly affected)			
				Standard hours			<10 dB(A)			10 to 20 dB(A)							
				Period	NML	Affected distance (m)	Measure	Within distance (m)	Mitigation level (dB(A))	Measure	Within distance (m)	Mitigation level (dB(A))	Measure	Within distance (m)	Mitigation level (dB(A))		
Classroom at schools and other educational institutions				Day	55	75				N	25	65	N, PC, RO	5	75		
Hospital wards and operating theatres				Day	65	25							N, PC, RO	5	75		
Place of worship				Day	55	75				N	25	65	N, PC, RO	5	75		
Active recreation				Day	65	25							N, PC, RO	5	75		
Passive recreation				Day	60	40				N	15	70	N, PC, RO	5	75		
Industrial premise				Day	75	5							N, PC, RO	5	75		
Offices, retail outlets				Day	70	15							N, PC, RO	5	75		

		L <sub>Aeq</sub> (15minute) noise level above NML														
		OOHW			< 5 dB(A)			5 to 15 dB(A)			15 to 25 dB(A)			> 25 dB(A)		
		Period	NML	Affected distance (m)	Measure	Within distance (m)	Mitigation level (dB(A))	Measure	Within distance (m)	Mitigation level (dB(A))	Measure	Within distance (m)	Mitigation level (dB(A))	Measure	Within distance (m)	Mitigation level (dB(A))
Hospital wards and operating theatres	Evening	65	25				N, R1, DR	15	70	N, R1, DR	3	80	N, R1, DR, PC, SN	1	90	
	Night	65	25	N	25	65	N, R2, NR	15	70	N, PC, SN, R2, DR	3	80	AA, N, PC, SN, R2, DR	1	90	
	Evening	55	75				N, R1, DR	40	60	N, R1, DR	15	70	N, R1, DR, PC, SN	3	80	
Place of worship	Night	55	75	N	75	55	N, R2, NR	40	60	N, PC, SN, R2, DR	15	70	AA, N, PC, SN, R2, DR	3	80	
	Evening	65	25				N, R1, DR	15	70	N, R1, DR	3	80	N, R1, DR, PC, SN	1	90	
Active recreation	Evening	60	40				N, R1, DR	25	65	N, R1, DR	5	75	N, R1, DR, PC, SN	2	85	
	Evening	75	5				N, R1, DR	3	80	N, R1, DR	1	90	N, R1, DR, PC, SN	0	100	
Passive recreation	Night	75	5	N	5	75	N, R2, NR	3	80	N, PC, SN, R2, DR	1	90	AA, N, PC, SN, R2, DR	0	100	
	Evening	70	15				N, R1, DR	5	75	N, R1, DR	2	85	N, R1, DR, PC, SN	1	95	
Industrial premise	Night	70	15	N	15	70	N, R2, NR	5	75	N, PC, SN, R2, DR	2	85	AA, N, PC, SN, R2, DR	1	95	
Offices, retail outlets	Evening	70	15				N, R1, DR	5	75	N, R1, DR	2	85	N, R1, DR, PC, SN	1	95	
	Night	70	15	N	15	70	N, R2, NR	5	75	N, PC, SN, R2, DR	2	85	AA, N, PC, SN, R2, DR	1	95	


### Non-residential receiver

Propagation across a valley / over water				L <sub>Aeq</sub> (15minute) noise level above NML											L <sub>Aeq</sub> (15minute) 75 dB(A) or greater (Highly affected)		
				Standard hours			<10 dB(A)			10 to 20 dB(A)							
				Period	NML	Affected distance (m)	Measure	Within distance (m)	Mitigation level (dB(A))	Measure	Within distance (m)	Mitigation level (dB(A))	Measure	Within distance (m)	Mitigation level (dB(A))		
Classroom at schools and other educational institutions				Day	55	90				N	25	65	N, PC, RO	5	75		
Hospital wards and operating theatres				Day	65	25							N, PC, RO	5	75		
Place of worship				Day	55	90				N	25	65	N, PC, RO	5	75		
Active recreation				Day	65	25							N, PC, RO	5	75		
Passive recreation				Day	60	50				N	15	70	N, PC, RO	5	75		
Industrial premise				Day	75	5							N, PC, RO	5	75		
Offices, retail outlets				Day	70	15							N, PC, RO	5	75		

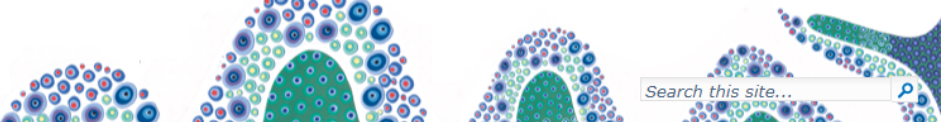
		L <sub>Aeq</sub> (5 minute) noise level above NML														
		OOHW			< 5 dB(A)			5 to 15 dB(A)			15 to 25 dB(A)			> 25 dB(A)		
		Period	NML	Affected distance (m)	Measure	Within distance (m)	Mitigation level (dB(A))	Measure	Within distance (m)	Mitigation level (dB(A))	Measure	Within distance (m)	Mitigation level (dB(A))	Measure	Within distance (m)	Mitigation level (dB(A))
Hospital wards and operating theatres	Evening	65	25				N, R1, DR	15	70	N, R1, DR	3	80	N, R1, DR, PC, SN	1	90	
	Night	65	25	N	25	65	N, R2, NR	15	70	N, PC, SN, R2, DR	3	80	AA, N, PC, SN, R2, DR	1	90	
	Evening	55	90				N, R1, DR	50	60	N, R1, DR	15	70	N, R1, DR, PC, SN	3	80	
Place of worship	Night	55	90	N	90	55	N, R2, NR	50	60	N, PC, SN, R2, DR	15	70	AA, N, PC, SN, R2, DR	3	80	
	Evening	65	25				N, R1, DR	15	70	N, R1, DR	3	80	N, R1, DR, PC, SN	1	90	
Active recreation	Evening	60	50				N, R1, DR	25	65	N, R1, DR	5	75	N, R1, DR, PC, SN	2	85	
	Evening	75	5				N, R1, DR	#N/A	80	N, R1, DR	1	90	N, R1, DR, PC, SN	0	100	
Passive recreation	Night	75	5	N	5	75	N, R2, NR	#N/A	80	N, PC, SN, R2, DR	1	90	AA, N, PC, SN, R2, DR	0	100	
	Evening	70	15				N, R1, DR	5	75	N, R1, DR	2	85	N, R1, DR, PC, SN	1	95	
Industrial premise	Night	70	15	N	15	70	N, R2, NR	5	75	N, PC, SN, R2, DR	2	85	AA, N, PC, SN, R2, DR	1	95	
	Evening	70	15				N, R1, DR	5	75	N, R1, DR	2	85	N, R1, DR, PC, SN	1	95	
Offices, retail outlets	Night	70	15	N	15	70	N, R2, NR	5	75	N, PC, SN, R2, DR	2	85	AA, N, PC, SN, R2, DR	1	95	
	Evening	70	15				N, R1, DR	5	75	N, R1, DR	2	85	N, R1, DR, PC, SN	1	95	

# Appendix F – PACHCI checklist and clearance letter

National Native Title Tribunal (NNTT) search tool results, search date 14/07/2022



National  
Native Title  
Tribunal



Search this site...

ABOUT US

FUTURE ACTS

INDIGENOUS LAND USE AGREEMENTS

NATIVE TITLE APPLICATIONS

ASSISTANCE

SEARCH THE REGISTERS & APPLICATIONS

Search Register of Native Title Claims

Search National Native Title Register

Search Register of Indigenous Land Use Agreements

Search Records of Section 31 Agreements

Search Applications and Determinations

Search Future Act Applications and Determinations

Search Register of Native Title Claims

The Register of Native Title Claims (RNTC) contains information about all claimant applications that have been registered. The Registrar is responsible for maintaining the RNTC.

Further [information about the RNTC](#) is available.

Tribunal file no.

Federal Court file no.

Application name

State or Territory

Representative A/TSI body area

Local government area

Date filed between

Sort by

ALL

Inner West Council

and

Date filed

Search >

No results for current search criteria

EMF-PA-GD-0070-TT01

OFFICIAL

68

24 June 2022

George Elhage  
Development Manager  
Smart Motorways SPD Delivery Strategy and Improvement

Dear George

**Preliminary assessment results for the M1 Western Distributor Smart Motorway REF, based on Stage 1 of the Procedure for Aboriginal cultural heritage consultation and investigation (the procedure).**

The project, as described in the Stage 1 assessment checklist was assessed as being unlikely to have an impact on Aboriginal cultural heritage.

The assessment is based on the following due diligence considerations:

- The project is unlikely to harm known Aboriginal objects or places.
- The AHIMS search did not indicate moderate to high concentrations of Aboriginal objects or places in the study area.
- The study area does not contain landscape features that indicate the presence of Aboriginal objects, based on the Office of Environment and Heritage's *Due diligence Code of Practice for the Protection of Aboriginal objects in NSW* and the Roads and Maritime Services' procedure.
- The cultural heritage potential of the study area appears to be reduced due to past disturbance.
- No mature age trees with Aboriginal cultural modification are present in the project area.
- **Please note: This is assessment was made with the proposal for the three site compounds to be located at Sommerville Rd, Rozelle, Glebe Island Bridge Abutment, Rozelle, and Colebee (near Richmond Road eastbound on-ramp onto M7)**

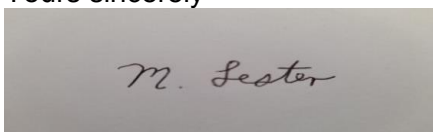
Your project may proceed in accordance with the environmental impact assessment process, as relevant, and all other relevant approvals.

If the scope of your project changes, you must contact the Aboriginal Engagement Section, Greater Sydney Region, and your regional environmental staff to reassess any potential impacts on Aboriginal cultural heritage.

If any potential Aboriginal objects (including skeletal remains) are discovered during the course of the project, all works in the vicinity of the find must cease. Follow the steps outlined in the Roads and Maritime Services' *Unexpected Heritage Items Procedure*.

For further assistance in this matter and do not hesitate to contact me.

Yours sincerely



Mark Lester  
Aboriginal Cultural Heritage Officer – Greater Sydney Region



## Stage 1 Roads and Maritime Services assessment

Procedure for Aboriginal cultural heritage consultation and investigation:  
Resource 3

### Aim

The project manager (or their representative) must provide the information requested in this checklist to the regional Aboriginal cultural heritage adviser. This information will assist them in determining whether the project may affect Aboriginal cultural heritage in accordance with Stage 1 of the procedure.

Please **provide** this completed cover sheet, along with the required information, to your regional Aboriginal cultural heritage adviser.

### Contact details for this project

#### Name of project:

Western Distributor Smart Motorway (P.0062474.04.001.006)

#### Project manager

George Elhage  
Development Manager – Smart Motorways  
SPD Delivery Strategy and Improvement  
M: 0426 145 265  
[george.elhage2@transport.nsw.gov.au](mailto:george.elhage2@transport.nsw.gov.au)

#### Environmental officer undertaking/managing the environmental impact assessment

Eva Wang  
Environment Officer  
Environment and Sustainability Branch (Assets and Operations)  
T: 0479 177 904  
[eva.wang@transport.nsw.gov.au](mailto:eva.wang@transport.nsw.gov.au)

Action	Status <input checked="" type="checkbox"/>
<p><b>Item 1</b></p> <p>Attach an overview of the project. The overview must include the known scope and extent of the proposed works; compound site requirements; access and movement of plant; re-location and/or provision of utilities; the location of noise walls, sedimentation basins, shared pathways, cycle ways, etc...</p> <p>Transport for NSW is proposing a modification to the Western Distributor Smart Motorway to prepare site compounds to support the delivery of the Western Distributor Smart Motorway project.</p> <p>The sites will be located at:</p> <ul style="list-style-type: none"> <li>• Sommerville Road, Rozelle</li> <li>• Glebe Island Bridge Abutment, Rozelle</li> <li>• Colebee (near Richmond Road eastbound on-ramp onto M7)</li> </ul>	<p><input checked="" type="checkbox"/></p>

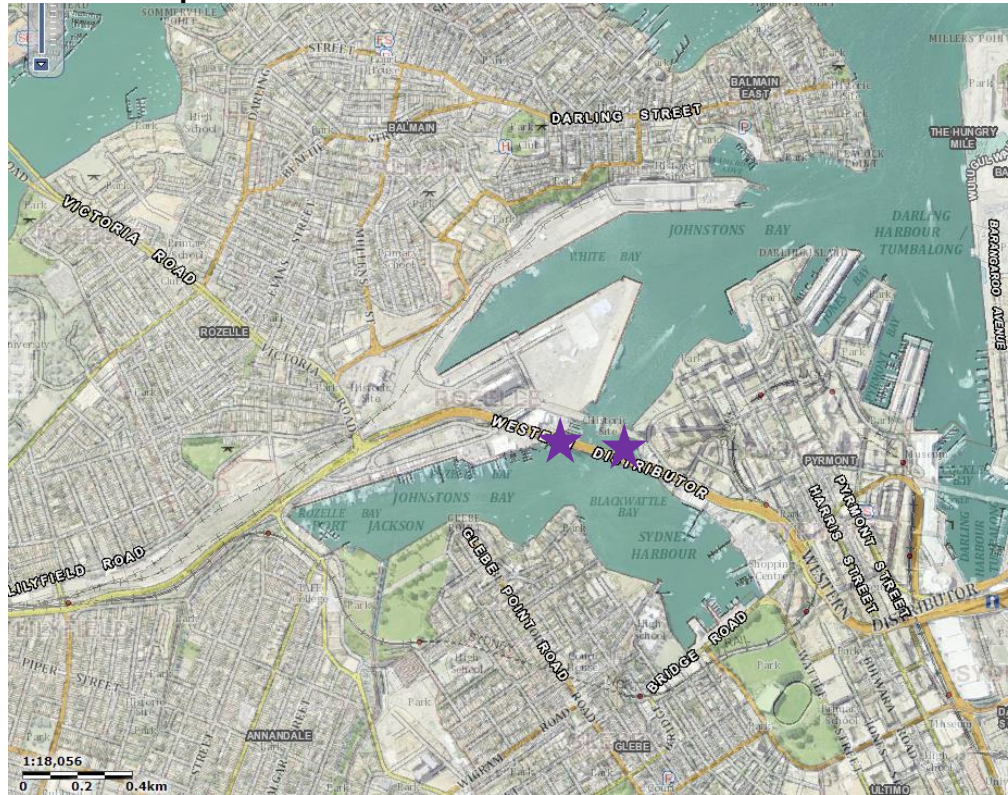
## Item 2

Attach a map/plan of the study area that clearly outlines the extent and scope of the project. The map/plan should also include topographical information where available.



See below locality maps and compound area boundary plans

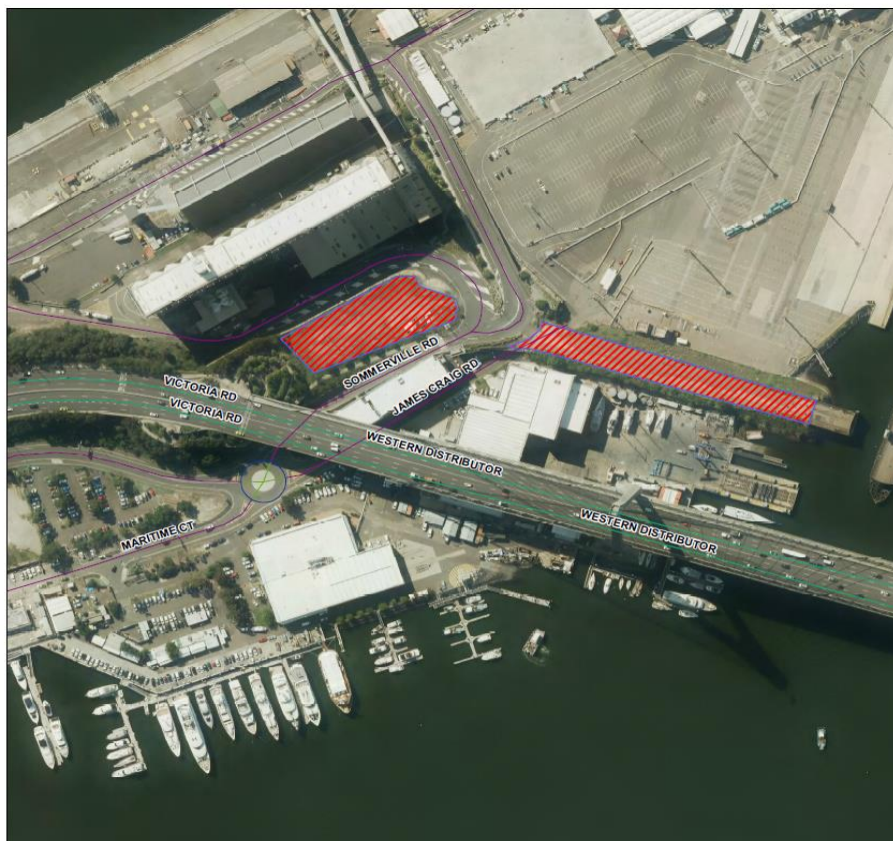
### Rozelle compounds



Western Distributor Smart Motorway  
Proposed Site Compounds

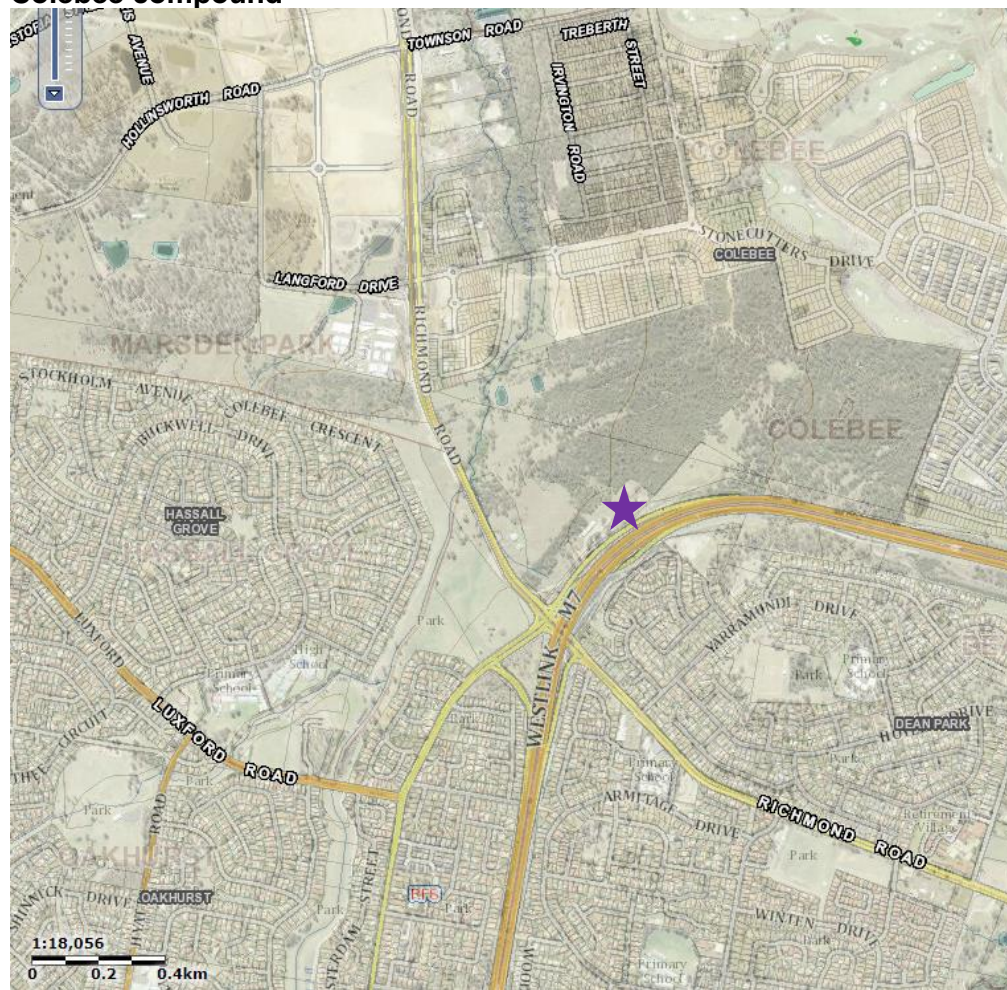
 Proposed Compound Sites

60 30 0 60 Meters





## Colebee compound

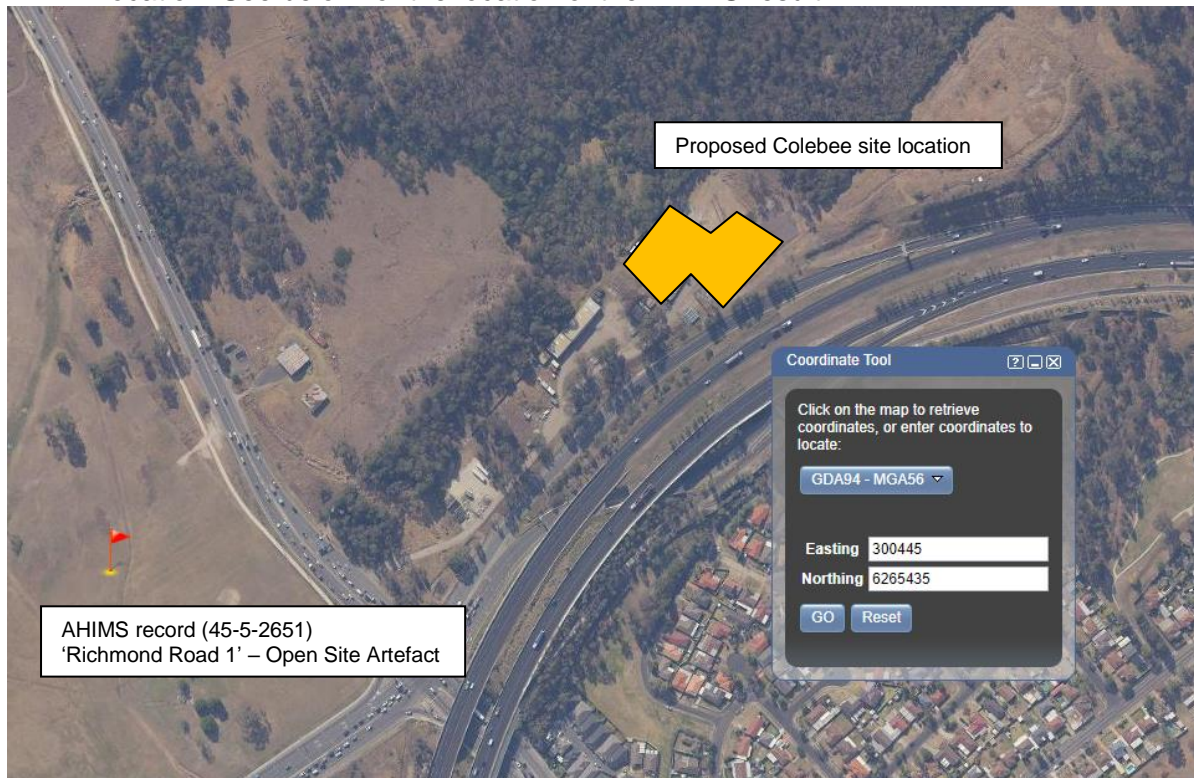


<p><b>Item 3</b> If land acquisition is required, provide details about this.</p> <p>No land acquisition is required. Lease agreements are being obtained for two of the locations.</p> <ul style="list-style-type: none"> <li>• The Colebee site is owned by TfNSW</li> <li>• The Sommersville Road site is partially owned by NSW Ports Authority. (Remaining area owned by TfNSW)</li> <li>• Glebe Island Bridge is a TfNSW asset and no lease is required.</li> </ul>	<input checked="" type="checkbox"/>
<p><b>Item 4</b> Attach a brief description of current and past land use, where known. For example, the study area land is currently used as a car park/road reserve/farming/etc. and was formally used for a car park/road reserve/farming/etc...</p> <p>The three proposed site locations have been highly disturbed in the past and have previously been utilised as site compound locations. The areas are hardstand and do not require vegetation removal.</p>	<input checked="" type="checkbox"/>
<p><b>Item 5</b> Describe the timeframe for the project along with key milestones and deliverables.</p> <p><u>Proposed Rozelle Compound Sites</u></p> <ul style="list-style-type: none"> <li>• Starting October 2022 and ending in April 2024</li> <li>• Approximately 18 months</li> </ul> <p><u>Proposed Colebee Compound Site</u></p> <ul style="list-style-type: none"> <li>• Starting January 2023 and ending in January 2024</li> <li>• Approximately 12 months</li> </ul>	<input checked="" type="checkbox"/>
<p><b>Item 6</b> Please attach the results of the Office of Environment and Heritage's Aboriginal Heritage Information Management System (<b>AHIMS</b>) <b>Basic Search</b> - <a href="http://www.environment.nsw.gov.au/licences/WhatInformationCanYouObtainFromAHIMS.htm">http://www.environment.nsw.gov.au/licences/WhatInformationCanYouObtainFromAHIMS.htm</a></p> <p>If required, please include the results of an <b>AHIMS Extensive Search</b>. These results should be plotted on a map/plan covering the study area.</p> <p>Refer to <b>Attachment A</b> for AHIMS search results.</p> <ul style="list-style-type: none"> <li>• AHIMS basic search result for all three proposed site locations <ul style="list-style-type: none"> <li>- Rozelle: search date: 3 May 2022 – nil result</li> <li>- Colebee: search date: 10 May 2022 – two results at Colebee</li> </ul> </li> <li>• Extensive search result for the two records below</li> </ul>	<input checked="" type="checkbox"/>



### Extensive Search Results

- Results identified one record about 450m south-west of the proposed Colebee site location. See below for the location of the AHIMS result



- Results identified one record about 500m south-west of the proposed Colebee site location. See below for the location of the AHIMS result



<p><b>Item 7</b>  Attach the results of the following heritage searches relevant to the study area:  Searches completed 10 May 2022:</p> <ul style="list-style-type: none"> <li>• Native Title Register search (NNTT search) <ul style="list-style-type: none"> <li>✓ LGA Search completed for Inner West Council and Blacktown Council showed no results. Refer to <b>Attachment B</b>.</li> </ul> </li> <li>• State Heritage Inventory search <ul style="list-style-type: none"> <li>✓ Search completed for Inner West Council and Blacktown Council returned no results. Refer to <b>Attachment C</b>.</li> </ul> </li> <li>• Australian Heritage Database search <ul style="list-style-type: none"> <li>✓ Search completed for 'Inner West Council' and 'Blacktown City Council' returned no results. Refer to <b>Attachment D</b>.</li> </ul> </li> </ul>	
<p><b>Item 8</b>  Attach a copy of any heritage assessment (Aboriginal or non-Aboriginal) previously prepared for the study area/project?</p> <p>The original REF included a PACHCI checklist which is included as <b>Attachment E</b>.</p>	<input checked="" type="checkbox"/>
<p><b>Item 9</b>  Attach a copy of any environmental impact assessment previously prepared for the study area/project?</p> <p>An Addendum REF is currently being prepared for the nominated compound sites.  A Project REF for the overarching smart motorways project (WDSM) was determined in May 2021 and included as <b>Attachment F</b>.</p>	<input checked="" type="checkbox"/>

**List of attachments:**

- A. AHIMS Search result and Extensive search result (May 2022)
- B. Native Title Register search result
- C. State Heritage Inventory search result
- D. Australian Heritage Database search results
- E. Western Distributor Smart Motorway PACHI Checklist
- F. M1 Western Distributor Smart Motorway Project REF



Eva Yong Yao Wang

Date: 03 May 2022

11 Staples Street

Kingsgrove New South Wales 2208

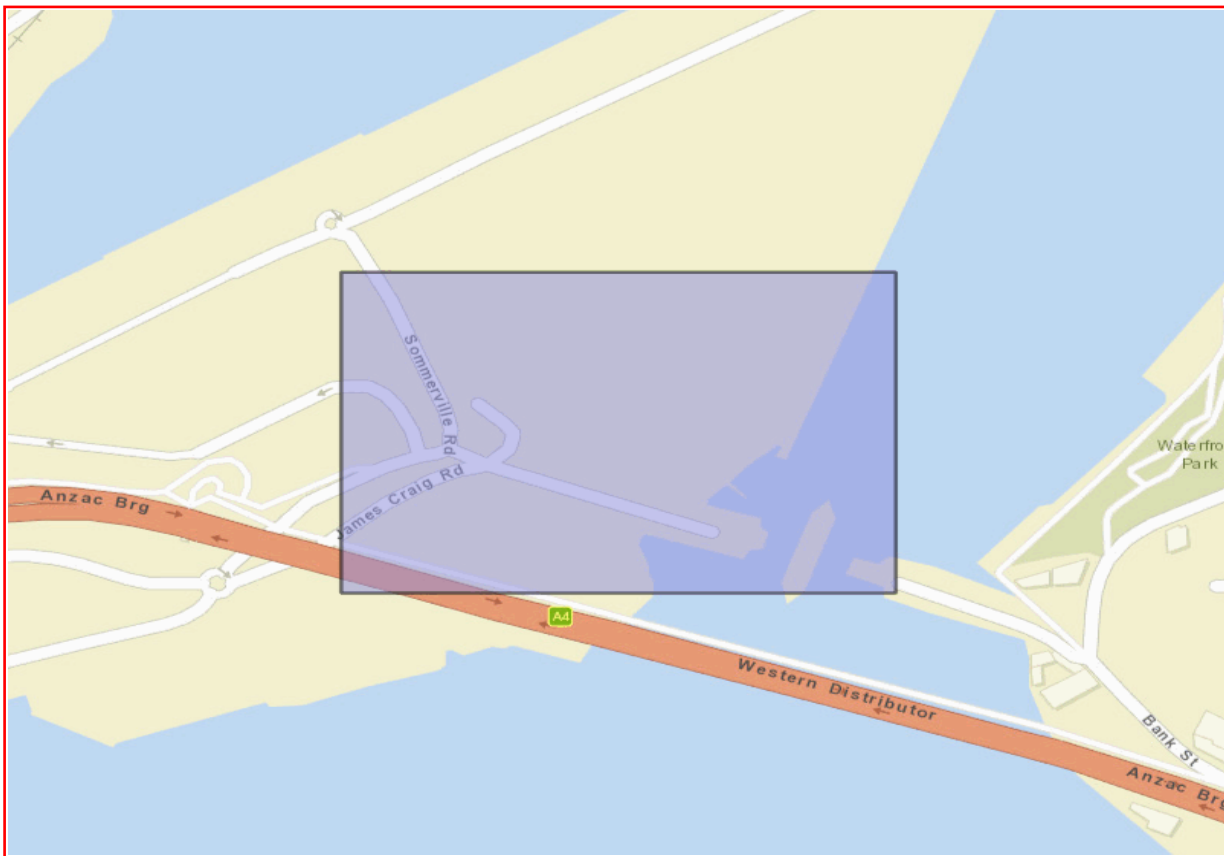
Attention: Eva Yong Yao Wang

Email: eva.wang@transport.nsw.gov.au

Dear Sir or Madam:

**AHIMS Web Service search for the following area at Lat, Long From : -33.8685, 151.1825 - Lat, Long To : -33.8663, 151.1864, conducted by Eva Yong Yao Wang on 03 May 2022.**

The context area of your search is shown in the map below. Please note that the map does not accurately display the exact boundaries of the search as defined in the paragraph above. The map is to be used for general reference purposes only.



A search of Heritage NSW AHIMS Web Services (Aboriginal Heritage Information Management System) has shown that:

0	Aboriginal sites are recorded in or near the above location.
0	Aboriginal places have been declared in or near the above location. *

**If your search shows Aboriginal sites or places what should you do?**

- You must do an extensive search if AHIMS has shown that there are Aboriginal sites or places recorded in the search area.
- If you are checking AHIMS as a part of your due diligence, refer to the next steps of the Due Diligence Code of practice.
- You can get further information about Aboriginal places by looking at the gazettal notice that declared it. Aboriginal places gazetted after 2001 are available on the [NSW Government Gazette \(https://www.legislation.nsw.gov.au/gazette\)](https://www.legislation.nsw.gov.au/gazette) website. Gazettal notices published prior to 2001 can be obtained from Heritage NSW upon request

**Important information about your AHIMS search**

- The information derived from the AHIMS search is only to be used for the purpose for which it was requested. It is not to be made available to the public.
- AHIMS records information about Aboriginal sites that have been provided to Heritage NSW and Aboriginal places that have been declared by the Minister;
- Information recorded on AHIMS may vary in its accuracy and may not be up to date. Location details are recorded as grid references and it is important to note that there may be errors or omissions in these recordings,
- Some parts of New South Wales have not been investigated in detail and there may be fewer records of Aboriginal sites in those areas. These areas may contain Aboriginal sites which are not recorded on AHIMS.
- Aboriginal objects are protected under the National Parks and Wildlife Act 1974 even if they are not recorded as a site on AHIMS.
- This search can form part of your due diligence and remains valid for 12 months.

Roads and Maritime Services - Philip St Parramatta

Date: 10 May 2022

PO Box 3035

Parramatta New South Wales 2124

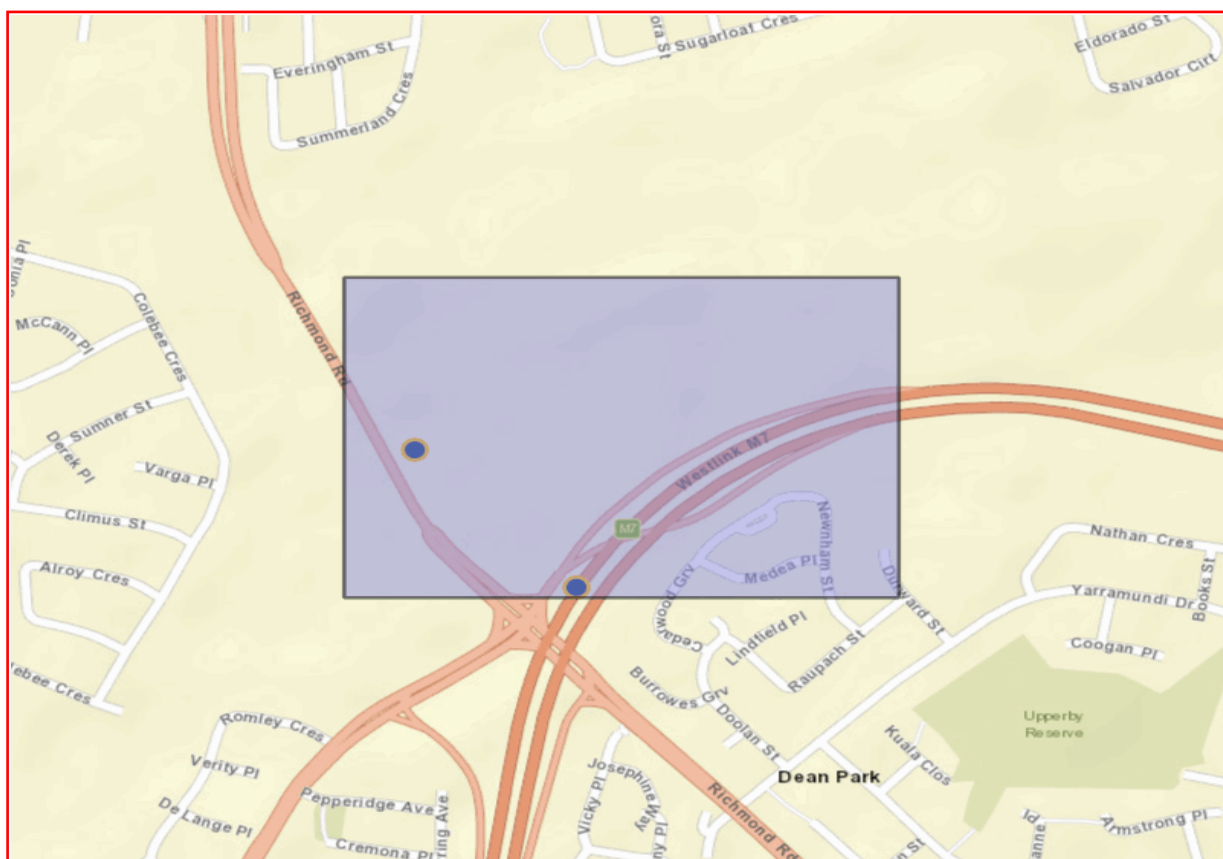
Attention: Hannah Shuttleworth

Email: hannah\_shuttleworth@rta.nsw.gov.au

Dear Sir or Madam:

**AHIMS Web Service search for the following area at Lat, Long From : -33.7327, 150.8462 - Lat, Long To : -33.7283, 150.854, conducted by Hannah Shuttleworth on 10 May 2022.**

The context area of your search is shown in the map below. Please note that the map does not accurately display the exact boundaries of the search as defined in the paragraph above. The map is to be used for general reference purposes only.



A search of Heritage NSW AHIMS Web Services (Aboriginal Heritage Information Management System) has shown that:

2	Aboriginal sites are recorded in or near the above location.
0	Aboriginal places have been declared in or near the above location. *

**If your search shows Aboriginal sites or places what should you do?**

- You must do an extensive search if AHIMS has shown that there are Aboriginal sites or places recorded in the search area.
- If you are checking AHIMS as a part of your due diligence, refer to the next steps of the Due Diligence Code of practice.
- You can get further information about Aboriginal places by looking at the gazettal notice that declared it. Aboriginal places gazetted after 2001 are available on the [NSW Government Gazette \(https://www.legislation.nsw.gov.au/gazette\)](https://www.legislation.nsw.gov.au/gazette) website. Gazettal notices published prior to 2001 can be obtained from Heritage NSW upon request

**Important information about your AHIMS search**

- The information derived from the AHIMS search is only to be used for the purpose for which it was requested. It is not be made available to the public.
- AHIMS records information about Aboriginal sites that have been provided to Heritage NSW and Aboriginal places that have been declared by the Minister;
- Information recorded on AHIMS may vary in its accuracy and may not be up to date. Location details are recorded as grid references and it is important to note that there may be errors or omissions in these recordings,
- Some parts of New South Wales have not been investigated in detail and there may be fewer records of Aboriginal sites in those areas. These areas may contain Aboriginal sites which are not recorded on AHIMS.
- Aboriginal objects are protected under the National Parks and Wildlife Act 1974 even if they are not recorded as a site on AHIMS.
- This search can form part of your due diligence and remains valid for 12 months.

# AHIMS Web Services (AWS)

## Extensive search - Site list report

Your Ref/PO Number : Colebee

Client Service ID : 681515

<u>SiteID</u>	<u>SiteName</u>	<u>Datum</u>	<u>Zone</u>	<u>Easting</u>	<u>Northing</u>	<u>Context</u>	<u>Site Status **</u>	<u>SiteFeatures</u>	<u>SiteTypes</u>	<u>Reports</u>
45-5-2651	Richmond Road 1	AGD	56	300445	6265435	Open site	Valid	Artefact : -		
	<u>Contact</u>	<u>Recorders</u>	Michael Therin					<u>Permits</u>	1364,1874,1977	
45-5-0422	Blacktown Plumpton	AGD	56	300660	6265230	Open site	Valid	Artefact : -	Open Camp Site	521,755,1018,9 8279,98280
	<u>Contact</u>	<u>Recorders</u>	Doctor.Jo McDonald					<u>Permits</u>	1596	

### **\*\* Site Status**

**Valid** - The site has been recorded and accepted onto the system as valid

**Destroyed** - The site has been completely impacted or harmed usually as consequence of permit activity but sometimes also after natural events. There is nothing left of the site on the ground but proponents should proceed with caution.

**Partially Destroyed** - The site has been only partially impacted or harmed usually as consequence of permit activity but sometimes also after natural events. There might be parts or sections of the original site still present on the ground

**Not a site** - The site has been originally entered and accepted onto AHIMS as a valid site but after further investigations it was decided it is NOT an aboriginal site. Impact of this type of site does not require permit but Heritage NSW should be notified

Report generated by AHIMS Web Service on 10/05/2022 for Hannah Shuttleworth for the following area at Lat, Long From : -33.7327, 150.8462 - Lat, Long To : -33.7283, 150.854. Number of Aboriginal sites and Aboriginal objects found is 2

This information is not guaranteed to be free from error omission. Heritage NSW and its employees disclaim liability for any act done or omission made on the information and consequences of such acts or omission.



## Search National Native Title Register

The National Native Title Register (NNTR) is a register established under s. 192 of the *Native Title Act 1993* (Cth).

The NNTR contains determinations of native title made by:

- the High Court of Australia
- the Federal Court of Australia
- or a recognised body such as South Australia's Supreme Court and Environment Resources and Development Court.

Further [information about the NNTR](#) is available.

Tribunal file no.

Federal Court file no.

Short name

Case name

State or Territory

ALL

Registered Native Title Body Corporate\*

Representative A/TSI body area

Local government area

Blacktown City Council

Determination type

ALL

Legal process

ALL

Determination outcome

ALL

Determination date between

and

Sort by

Determination date

Search

\*Please note: current contact details for the Registered Native Title Body Corporate are available from the Office of the Registrar of Indigenous Corporations [www.oric.gov.au](http://www.oric.gov.au)

No results for current search criteria



## Search National Native Title Register

The National Native Title Register (NNTR) is a register established under s. 192 of the *Native Title Act 1993* (Cth).

The NNTR contains determinations of native title made by:

- the High Court of Australia
- the Federal Court of Australia
- or a recognised body such as South Australia's Supreme Court and Environment Resources and Development Court.

Further [information about the NNTR](#) is available.

Tribunal file no.

Federal Court file no.

Short name

Case name

State or Territory 

ALL

Registered Native Title Body Corporate\*

Representative A/TSI body area

Local government area 

Inner West Council

Determination type 

ALL

Legal process 

ALL

Determination outcome 

ALL

Determination date between 

and

Sort by 

Determination date


Search

\*Please note: current contact details for the Registered Native Title Body Corporate are available from the Office of the Registrar of Indigenous Corporations [www.oric.gov.au](http://www.oric.gov.au)

No results for current search criteria



## Rozelle State Heritage Search


**State Heritage Inventory**

**Start your search**

View Results By: **Map** A-Z 1/2 Statutory list

State Heritage Register (3)


- Sewage Pumping Station 27**
  - Address: Callan Park Rozelle
  - LGA: INNER WEST
  - LALC: METROPOLITAN
  - Listing No: 01341
  - Gazette Date: 18/11/1999
- White Bay Power Station**
  - Address: Victoria Road, Rozelle
  - LGA: INNER WEST
  - LALC: METROPOLITAN
  - Listing No: 01015
  - Gazette Date: 02/04/1999
- Glebe Island Bridge**
  - Address: Bank Street, Victoria Road, Pyrmont
  - LGA: LEICHARDT
  - LALC: METROPOLITAN
  - Listing No: 01914
  - Gazette Date: 29/11/2013

Displaying 1 - 3 (Total: 3)

Page 1 of 1

Layers
State Heritage Register...
DPE Base...

## Colebee State Heritage Search

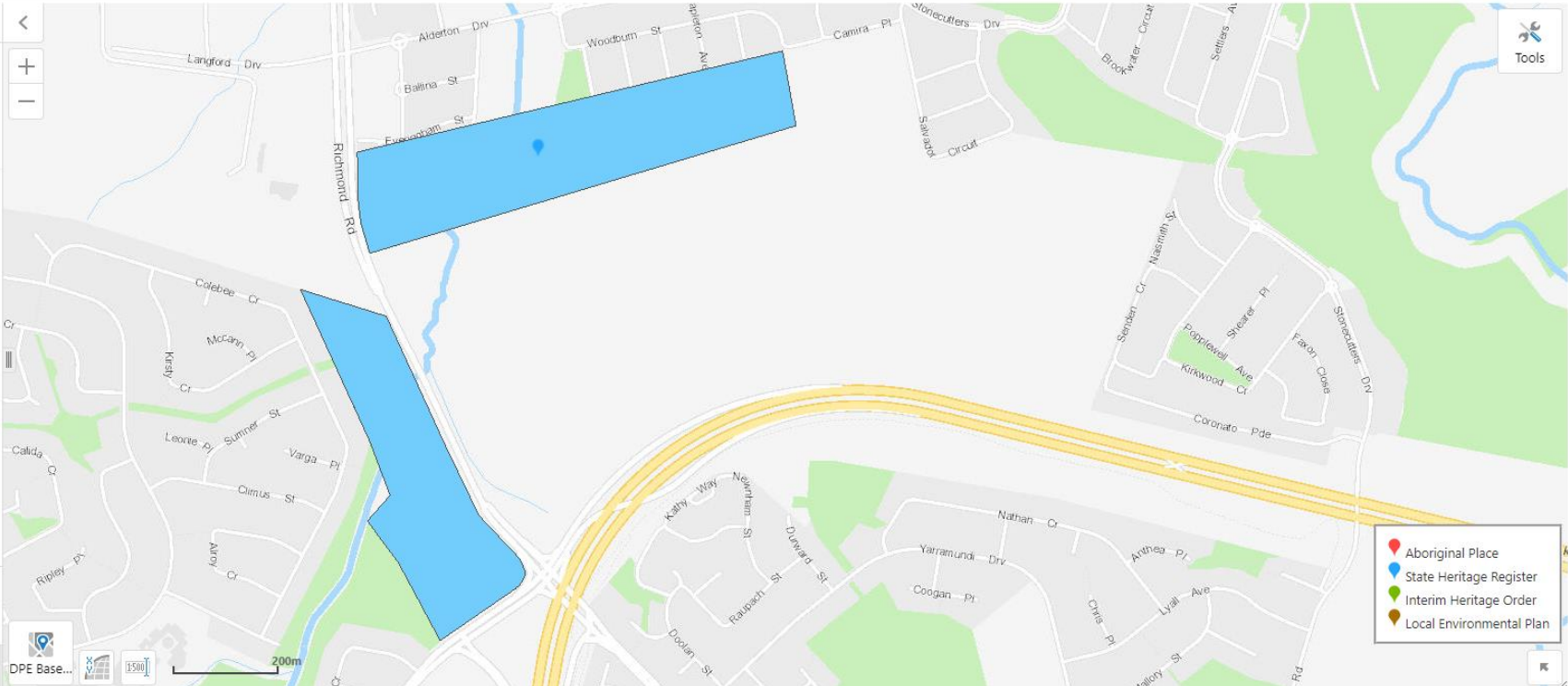
 **State Heritage Inventory**

**Start your search**     **VIEW RESULTS** **Advanced search**

**View Results By:** **Map** A-Z **Statutory list** **CLEAR SPATIAL RESULTS**

**State Heritage Register (1)**

- Colebee and Nurranginy Land Grant**
  - Address: Richmond Road, Colebee
  - LGA: BLACKTOWN
  - LALC: DEERUBBIN
  - Listing No: 01877
  - Gazette Date: 10/02/2012



- Aboriginal Place
- State Heritage Register
- Interim Heritage Order
- Local Environmental Plan

Displaying 1 - 1 (Total: 1)

Page 1 of 1

**Layers** **State Heritage Register...** **DPE Base...**

OFFICIAL

## Search Results

### No results found.

Enter at least one search criterion.

[Search Hints](#)

<input type="button" value="Search"/> <input type="button" value="Reset form"/>	
Place name	
<input type="text"/>	
Street name	
<input type="text"/>	
Town or suburb	State
<input type="text"/>	--All-- <input type="button" value="v"/>
Country	
<input type="text"/>	

### Advanced search options

List	
All Lists <input type="button" value="v"/>	
<i>Different lists will provide different status and class options</i>	
Local Government Area	Place ID number
Inner West Council	<input type="text"/>
<a href="#">Legal status</a>	Class
--All-- <input type="button" value="v"/>	--All-- <input type="button" value="v"/>
Keyword Search	
<input type="text"/>	
<input checked="" type="checkbox"/> Description	<input checked="" type="checkbox"/> Statement of Significance
<input checked="" type="checkbox"/> Place history	
<a href="#">Latitude/Longitude</a>	
<div style="text-align: center;">N</div> <div style="text-align: center;">Latitude 1</div> <div style="display: flex; justify-content: space-around;"> <div>Longitude 1 <input type="text"/> S</div> <div>Longitude 2</div> </div> <div style="display: flex; justify-content: space-around;"> <div>W <input type="text"/> E</div> <div>Latitude 2 <input type="text"/> E</div> <div>E</div> </div> <div style="text-align: center;">S</div>	
<input type="radio"/> Wholly within region <input checked="" type="radio"/> Wholly or partially within region	
<i>Longitude coordinates should be entered as ddd.mm.ss</i> <i>Latitude coordinates should be entered as dd.mm.ss</i>	
Map Ref No	
<input type="text"/>	
1:100,000 eg 2357 1:250,000 eg SF-50-01	

### Search Hints

- Not all fields need to be filled in. The fewer you fill in the more results you will get.
- If you cannot find a place, check spelling and try alternative names. Reduce the number of words that you include and use fewer fields.

## Search Results

### No results found.

Enter at least one search criterion.

[Search Hints](#)

<input type="button" value="Search"/> <input type="button" value="Reset form"/>	
Place name	
<input type="text"/>	
Street name	
<input type="text"/>	
Town or suburb	State
<input type="text"/>	--All-- <input type="button" value="v"/>
Country	
<input type="text"/>	

### Advanced search options

List	
All Lists <input type="button" value="v"/>	
<i>Different lists will provide different status and class options</i>	
Local Government Area	Place ID number
Blacktown City Council	<input type="text"/>
<a href="#">Legal status</a>	Class
--All-- <input type="button" value="v"/>	--All-- <input type="button" value="v"/>
Keyword Search	
<input type="text"/>	
<input checked="" type="checkbox"/> Description	<input checked="" type="checkbox"/> Statement of Significance
<input checked="" type="checkbox"/> Place history	
<a href="#">Latitude/Longitude</a>	
<div style="text-align: center;">N</div> <div style="text-align: center;">Latitude 1</div> <div style="display: flex; justify-content: space-around;"> <div>Longitude 1 <input type="text"/> S</div> <div>Longitude 2</div> </div> <div style="display: flex; justify-content: space-around;"> <div>W <input type="text"/> E</div> <div>Latitude 2 <input type="text"/> E</div> <div>E</div> </div> <div style="text-align: center;">S</div>	
<input type="radio"/> Wholly within region <input checked="" type="radio"/> Wholly or partially within region	
<i>Longitude coordinates should be entered as ddd.mm.ss</i> <i>Latitude coordinates should be entered as dd.mm.ss</i>	
Map Ref No	
<input type="text"/>	
1:100,000 eg 2357 1:250,000 eg SF-50-01	


### Search Hints

- Not all fields need to be filled in. The fewer you fill in the more results you will get.
- If you cannot find a place, check spelling and try alternative names. Reduce the number of words that you include and use fewer fields.

## Appendix G – Non-Aboriginal Heritage search results



## Rozelle State Heritage Search

 **State Heritage Inventory**

**Start your search**     **VIEW RESULTS** **Advanced search**

**View Results By:** **Map** **A-Z** **Statutory list** **CLEAR SPATIAL RESULTS**

**State Heritage Register (3)**

**Sewage Pumping Station 27**

Address: Callan Park Rozelle  
LGA: INNER WEST  
LALC: METROPOLITAN  
Listing No: 01341  
Gazette Date: 18/11/1999

**White Bay Power Station**

Address: Victoria Road, Rozelle  
LGA: INNER WEST  
LALC: METROPOLITAN  
Listing No: 01015  
Gazette Date: 02/04/1999

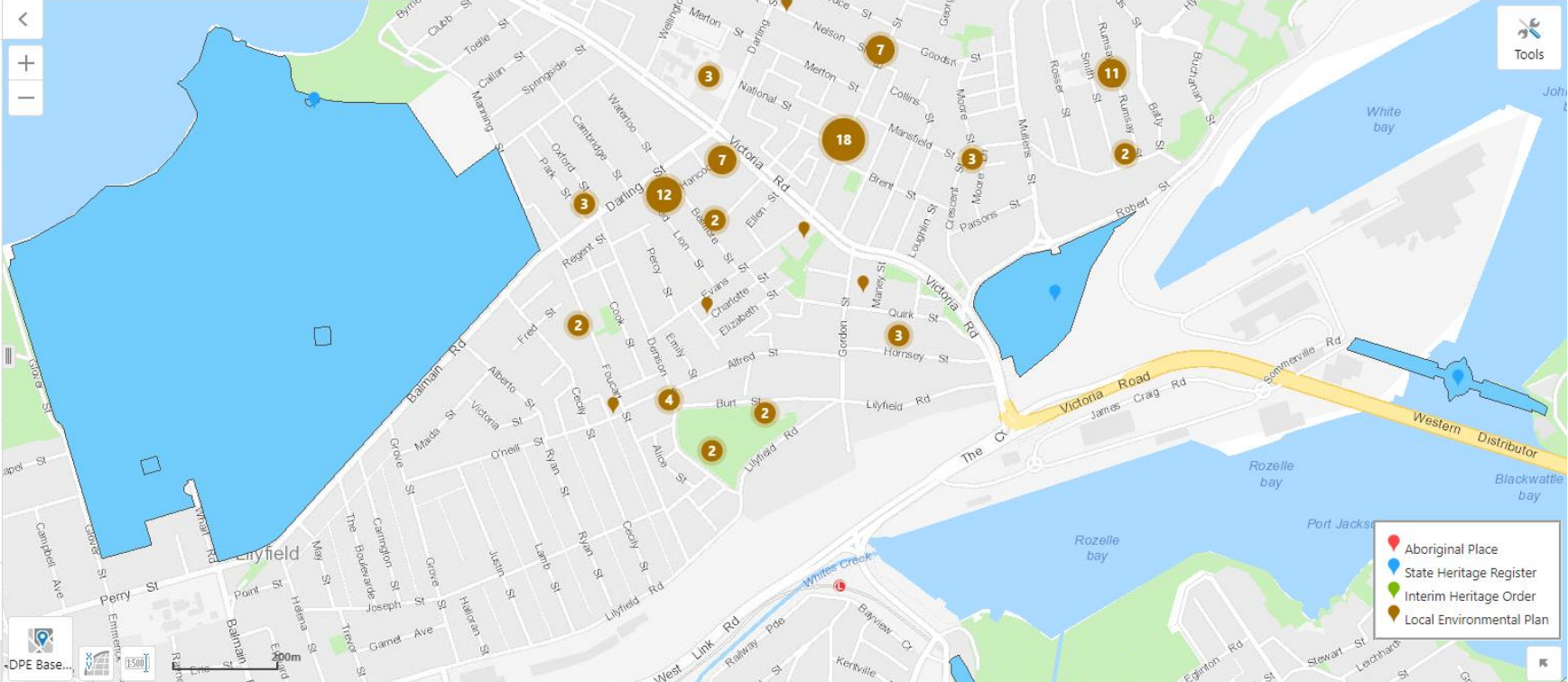
**Glebe Island Bridge**

Address: Bank Street, Victoria Road, Pyrmont  
LGA: LEICHARDT  
LALC: METROPOLITAN  
Listing No: 01914  
Gazette Date: 29/11/2013


Displaying 1 - 3 (Total: 3)

Page 1 of 1

Layers State Heritage Register...



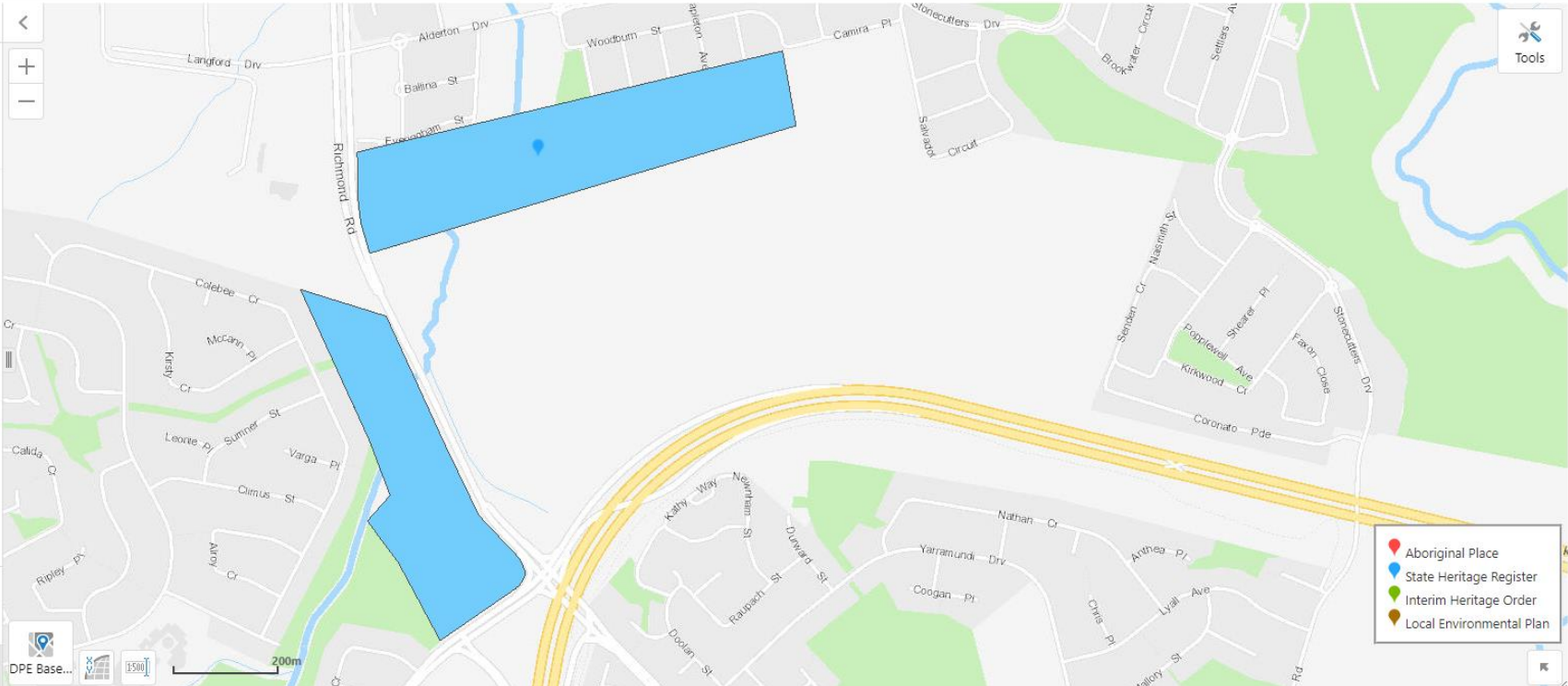
## Colebee State Heritage Search

 **State Heritage Inventory**

**Start your search**     **VIEW RESULTS** **Advanced search**

**View Results By:** **Map** **A-Z** **Statutory list** **CLEAR SPATIAL RESULTS**

**State Heritage Register (1)**  
**Colebee and Nurranginy Land Grant**  
Address: Richmond Road, Colebee  
LGA: BLACKTOWN  
LALC: DEERUBBIN  
Listing No: 01877  
Gazette Date: 10/02/2012



**Displaying 1 - 1 (Total: 1)**  
**Page 1 of 1**

**Layers** **State Heritage Register...** **DPE Base...** **1500m** **200m**

OFFICIAL



## Appendix H – Contaminated lands register search results

## Search results

Your search for:Suburb: ROZELLE

Matched 34 notices  
relating to 5 sites.

[Search Again](#)

[Refine Search](#)

Suburb	Address	Site Name	Notices related to this site
ROZELLE	Reynolds Street and Buchanan STREET	<a href="#">Ampol Balmain</a>	8 former
ROZELLE	Terry STREET	<a href="#">Balmain Power Station</a>	5 former
ROZELLE	35 Terry STREET	<a href="#">Former Chemplex Factory</a>	10 former
ROZELLE	Reynolds STREET	<a href="#">Former Unilever Sulphonation Plant</a>	4 former
ROZELLE	Robert STREET	<a href="#">White Bay Power Station</a>	7 former

Page 1 of 1

12 August 2022

For business and industry ^

For local government ^

### Contact us

131 555 (tel:131555)

Online (<https://yoursay.epa.nsw.gov.au/epa-website-feedback>)

[info@epa.nsw.gov.au](mailto:info@epa.nsw.gov.au) (<mailto:info@epa.nsw.gov.au>)

EPA Office Locations (<https://www.epa.nsw.gov.au/about-us/contact-us/locations>)

[Accessibility \(https://www.epa.nsw.gov.au/about-us/contact-us/website-service-standards/help-index\)](https://www.epa.nsw.gov.au/about-us/contact-us/website-service-standards/help-index)

[Disclaimer \(https://www.epa.nsw.gov.au/about-us/contact-us/website-service-standards/disclaimer\)](https://www.epa.nsw.gov.au/about-us/contact-us/website-service-standards/disclaimer)

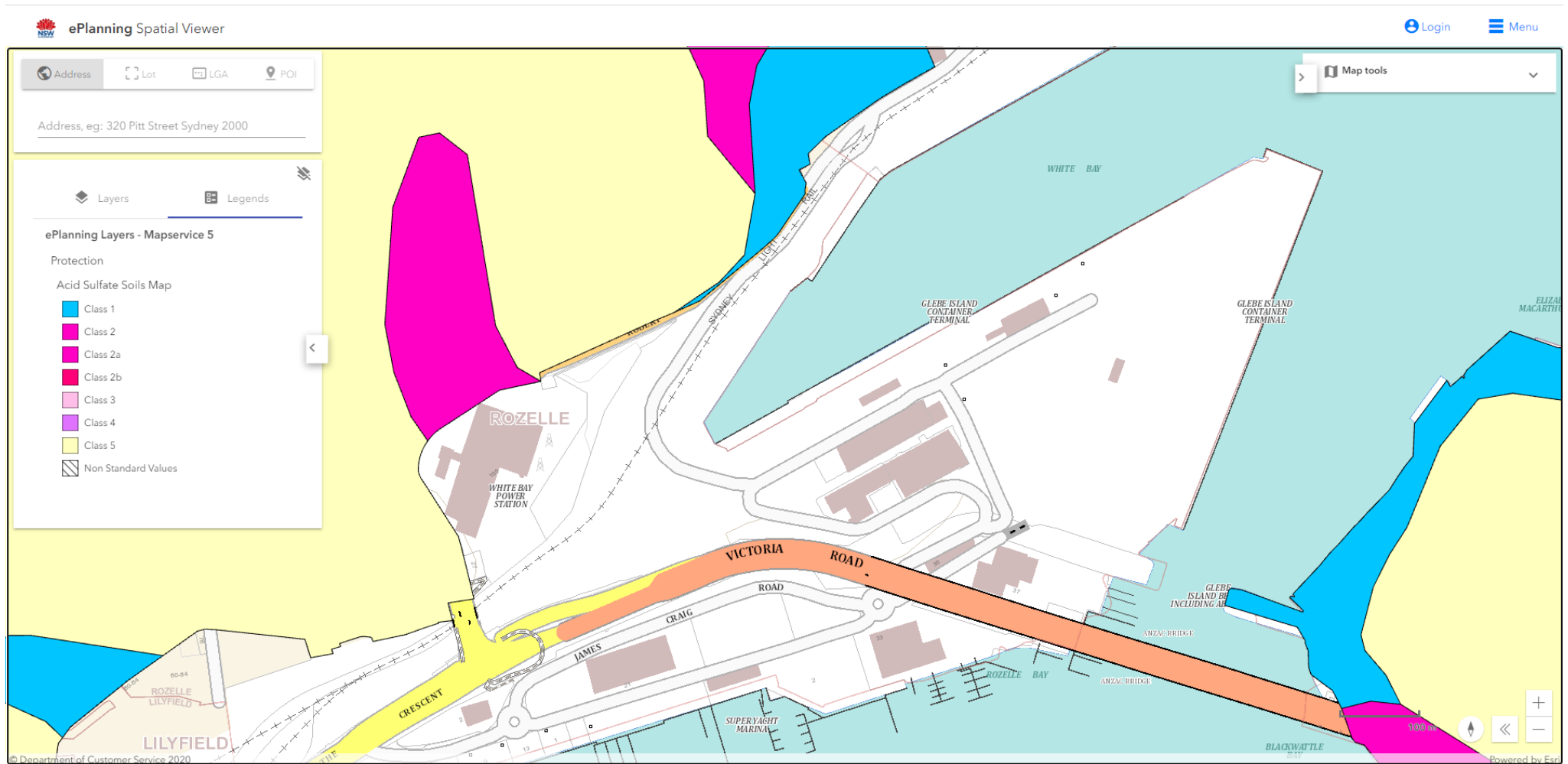
[Privacy \(https://www.epa.nsw.gov.au/about-us/contact-us/website-service-standards/privacy\)](https://www.epa.nsw.gov.au/about-us/contact-us/website-service-standards/privacy)

[Copyright \(https://www.epa.nsw.gov.au/about-us/contact-us/website-service-standards/copyright\)](https://www.epa.nsw.gov.au/about-us/contact-us/website-service-standards/copyright)

**in**  
(<https://au.l>  
environmer  
protection-  
authrity-  
(<https://www.epa.gov.au>)

Find us on

## Acid Sulfate Soils search



OFFICIAL





