

Western Sydney International Airport Precinct Road Network



Australian Government



The Northern Road looking north.

The Western Sydney International Airport Precinct Road Network is a proposed program of road corridors to support growth in Western Sydney.

Transport for NSW is creating one of Australia's largest infrastructure and city shaping programs, the 11,200 hectare Western Sydney International Airport Precinct.

The precinct will become integral to Greater Sydney and NSW. It will transform the area into a thriving cultural, social and economic hub. We are ensuring local communities and industry are connected to the precinct by safe, reliable, and integrated public transport and roads.

The State Environmental Planning Policy (SEPP) for the Western Sydney Aerotropolis was released in 2021 which established the major transport corridors for the Western Sydney International Airport Precinct. Transport has identified seven of these corridors for prioritisation for development.

Transport is considering how to stage delivery of these corridors so that they meet the needs of the community as the Western Sydney Airport Precinct grows over the coming decades. We are providing information on the proposed future transport use of these corridors and you now have the opportunity to provide your comments on how you would like to use the road network in the future.

The delivery of these transport corridors is subject to future investment or funding decisions by the NSW Government and/or the Federal Government.

Seven corridors



The Northern Road

Bradfield Metro Link Road

Bradfield Metro Link Road would provide access to Bradfield City Centre and metro station, which connects to Fifteenth Avenue (West) and Eastern Ring Road for public transport.

Key features include:

- Two lanes in each direction, including one dedicated bus lane
- No access for heavy vehicles
- Tree canopy strategy to be developed to retain trees and plant new trees within the corridor where possible
- Facilities provided for walking and bike riding

Devonshire Road

Devonshire Road is a north-south connection between Mamre Road and Bringelly Road servicing the Western Sydney International Airport Precinct. The corridor would link the Mamre Road Precinct with the Western Sydney Employment Area, as well as the South West Growth Area.

Key features include:

- Two lanes in each direction with provision for future growth
- Tree canopy strategy to be developed to retain trees and plant new trees within the corridor where possible
- Facilities provided for walking and bike riding

Badgerys Creek Road

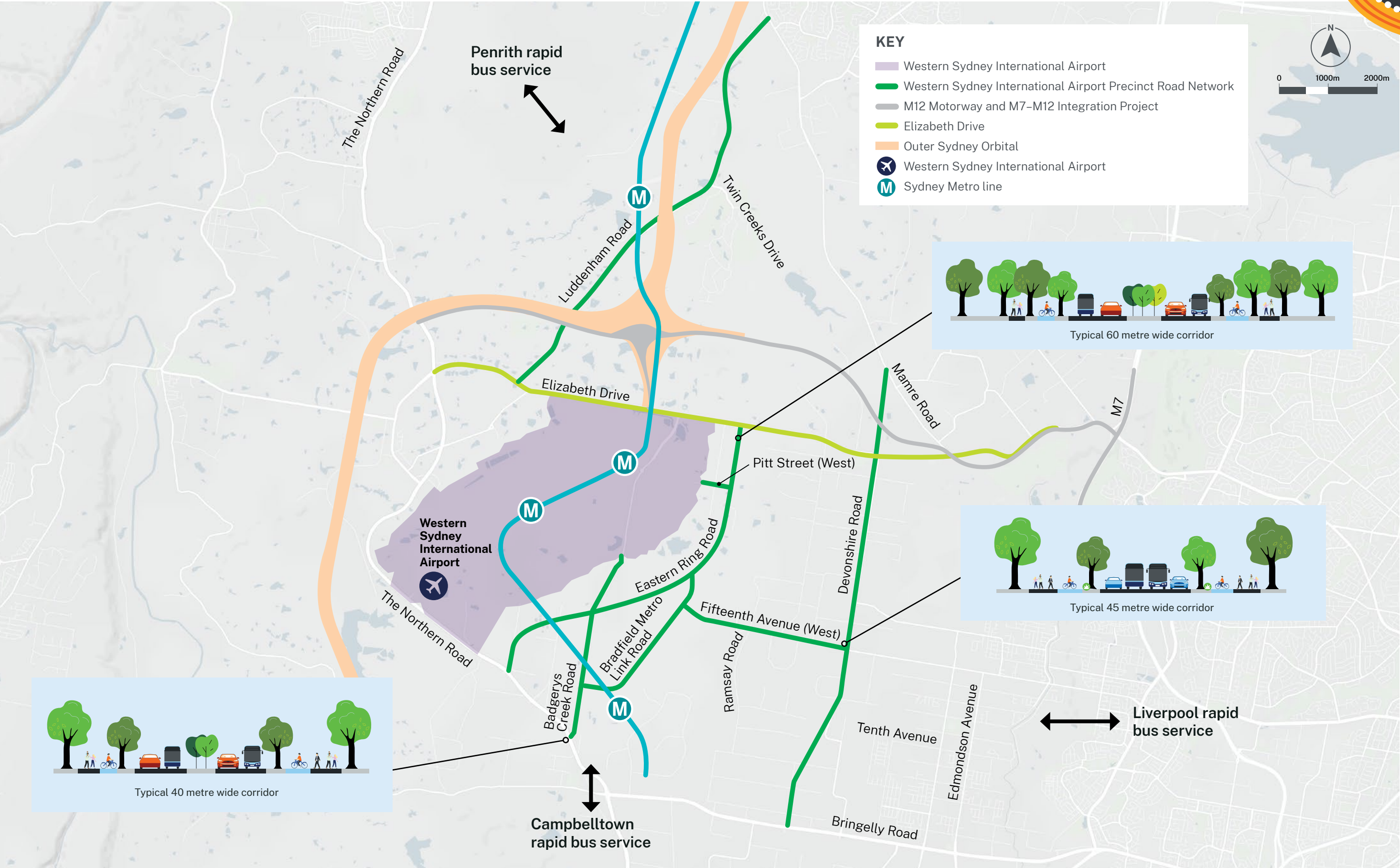
Badgerys Creek Road South between Eastern Ring Road and The Northern Road is intended to service the Bradfield town centre. This corridor is proposed to be a key link for rapid bus services connecting to Western Sydney Airport, Bradfield City Centre and metro the station.

Badgerys Creek Road North between Eastern Ring Road and the boundary of the Airport is intended to provide bus access, active transport and local access.

Key features include:

- Two lanes in each direction with a central median for Badgerys Creek Road South
- Badgerys Creek Road south will have no kerb-side parking whilst north will have some kerb-side parking
- Freight will be limited along the corridor
- Tree canopy strategy to be developed to retain trees and plant new trees within the corridor where possible
- Facilities provided for walking and bike riding

Map of the seven road corridors





Eastern Ring Road

Eastern Ring Road is intended to provide a north-south freight, heavy vehicle and construction route as well as a ring road for Western Sydney International Airport.

Key features include:

- Two lanes in each direction with provision for future growth
- Multi use corridor for freight, public transport and vehicles
- Tree canopy strategy to be developed to retain trees and plant new trees within the corridor where possible
- Facilities provided for walking and bike riding

Fifteenth Avenue (West)

Fifteenth Avenue, from Devonshire Road to Bradfield Metro Link Road, is intended to provide an east-west connection linking Liverpool with the Bradfield city and the Western Sydney International Airport.

Key features include:

- Bus and walking and cycling only west of Ramsay Road
- Two lanes in each direction including a bus lane in each direction east of Ramsay Road
- Freight will be limited along the corridor
- Tree canopy strategy to be developed to retain trees and plant new trees within the corridor where possible

Luddenham Road

The south section of Luddenham Road is intended to link communities surrounding the Airport with Luddenham Metro Station. The north section of Luddenham Road is intended to connect the industrial areas in the precinct.

Key features include:

- Two lanes in each direction with provision for future growth
- Multi use corridor for vehicles, public transport and freight
- Tree canopy strategy to be developed to retain trees and plant new trees within the corridor where possible
- Facilities provided for walking and bike riding

Pitt Street (West)

Pitt Street (West) is a key link that enables people walking, bike riding and buses accessing the Western Sydney International Airport.

Key features include:

- Two lanes in each direction
- Public transport and walking and bike riding
- Tree canopy strategy to be developed to retain trees and plant new trees within the corridor where possible

Further information regarding each corridor is available at yoursay.transport.nsw.gov.au/western-sydney-international-airport-precinctroadnetwork

Have your say

Transport is in the planning stages for the road corridors, and we invite you to take part in our community consultation for the Western Sydney International Airport Precinct Road Network. We would like to know what you think about our proposed corridors that would support people, bikes, cars, buses, rail and freight access to and from Western Sydney International Airport.

The consultation is open for comments until **5pm Tuesday 31 October**. Feedback can be submitted through the Have Your Say website at yoursay.transport.nsw.gov.au/western-sydney-international-airport-precinct-roadnetwork. After the consultation, we will share your feedback with you and continue to provide updates and seek your opinion as the project develops.

Information sessions

The project team will be available to answer your questions during the display period. We are combining our community sessions with the Elizabeth Drive project team which currently has the Review of Environmental Factors out for public consultation. Join us at one of the community sessions below.

Wednesday Session (Face-to-Face)

- Workers Hubertus Country Club,
205 Adams Road, Luddenham
- Wednesday 11 October, 5pm to 7pm

Saturday Session (Face-to-Face)

- Bringelly Community Centre,
5 Greendale Road, Bringelly
- Saturday 21 October, 10am to 12 noon

Online session (Microsoft Teams)

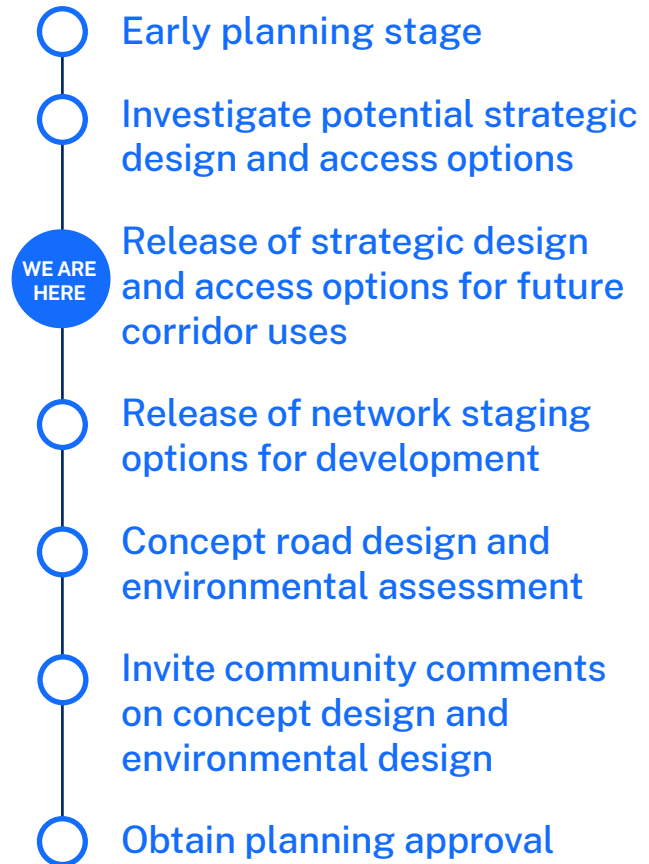
- To register, email: corridors@transport.nsw.gov.au
- Monday 23 October, 6.30pm to 7.30pm

Consultation closes

- Tuesday 31 October, 5pm

Next steps

Transport is continuing to progress the design of these corridors and will publish a consultation report on our website. We will continue to keep the community up-to-date as the project progresses. We encourage you to register for updates, so that we can get the latest information to you via email.



Acquisition

If the proposal receives funding to progress to future stages, there may be a need for Transport to acquire some properties along these road corridors. These may be full or partial property acquisitions. Transport will continue to be in contact with potentially affected property owners as the project progresses.

More information about the property acquisition process is available at www.propertyacquisition.nsw.gov.au

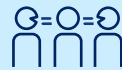
Contact us



1800 837 511



corridors@transport.nsw.gov.au



Interpreter service

For languages other than English call **131 450**
Arabic • Italian • Maltese • Cantonese • Punjabi

لطلب خدمة الترجمة الشفهية للغات غير الإنجليزية اتصل بالرقم
131 450

Per il servizio di interpretariato per lingue diverse
dall'inglese chiamare il **131 450**

Għal servizz tal-interpretar għall-lingwi oħra barra l-Ingliż
ċempel **131 450**

ਭਾਸ਼ਾਵਾਂ ਦੇ ਅਨੁਸਾਰੀ ਸੇਵਾ ਲਈ ਫੋਨ ਕਰੋ **131 450**

ਅੰਗਰੇਜ਼ੀ ਤੋਂ ਇਲਾਵਾ ਦੂਸਰੀਆਂ ਭਾਸ਼ਾਵਾਂ ਵਾਸਤੇ ਦੁਆਰੀਆਂ ਸੇਵਾ ਲਈ ਫੋਨ ਕਰੋ
131 450

