

Sydney Trains

Westmead Bridge Road Upgrade July and August construction update

From Monday 1 July to Sunday 1 September 2024

What we're doing

Sydney Trains is upgrading the road-over-rail bridge at Bridge Road, Westmead, to improve traffic flow in the Westmead precinct.

The project includes:

- an upgraded bridge with three traffic lanes, one northbound and two southbound lanes to ease morning peak hour traffic.
- a new shared path on the eastern side and an upgraded footpath on the western side of the bridge.

Throughout July and August, works will be carried out on both sides of the bridge during standard construction hours.

Work will include:

- site access construction and mobilisation
- backfill and excavation
- piling
- bridge substructure construction.

Bridge work will also be carried out within the rail corridor during the following weekend:

- **From 5am Saturday 31 August to 10pm Sunday 1 September.**

We understand this work may have an impact on you and we appreciate your patience and understanding.

How this affects you

Traffic and Parking

- A contraflow may be in place on Alexandra Avenue, between Bridge Road and Hawkesbury Road during weekdays. Traffic flow will be maintained in both directions.
- Traffic control will be on duty to assist motorists and pedestrians during the affected periods.
- There will be reduced parking on Alexandra Avenue near Bridge Road on the railway corridor side of the road.
- Buses replace trains for some rail lines during this period. Please plan ahead and visit www.transportnsw.info to find updated trackwork information.

Bus Stop Relocation

- **From Monday 1 July, Bus Stop "Bridge Rd opp Wentworth Ave" (Stop ID: 2145542) will be temporarily relocated 20 metres north to facilitate construction works.** See map for details.

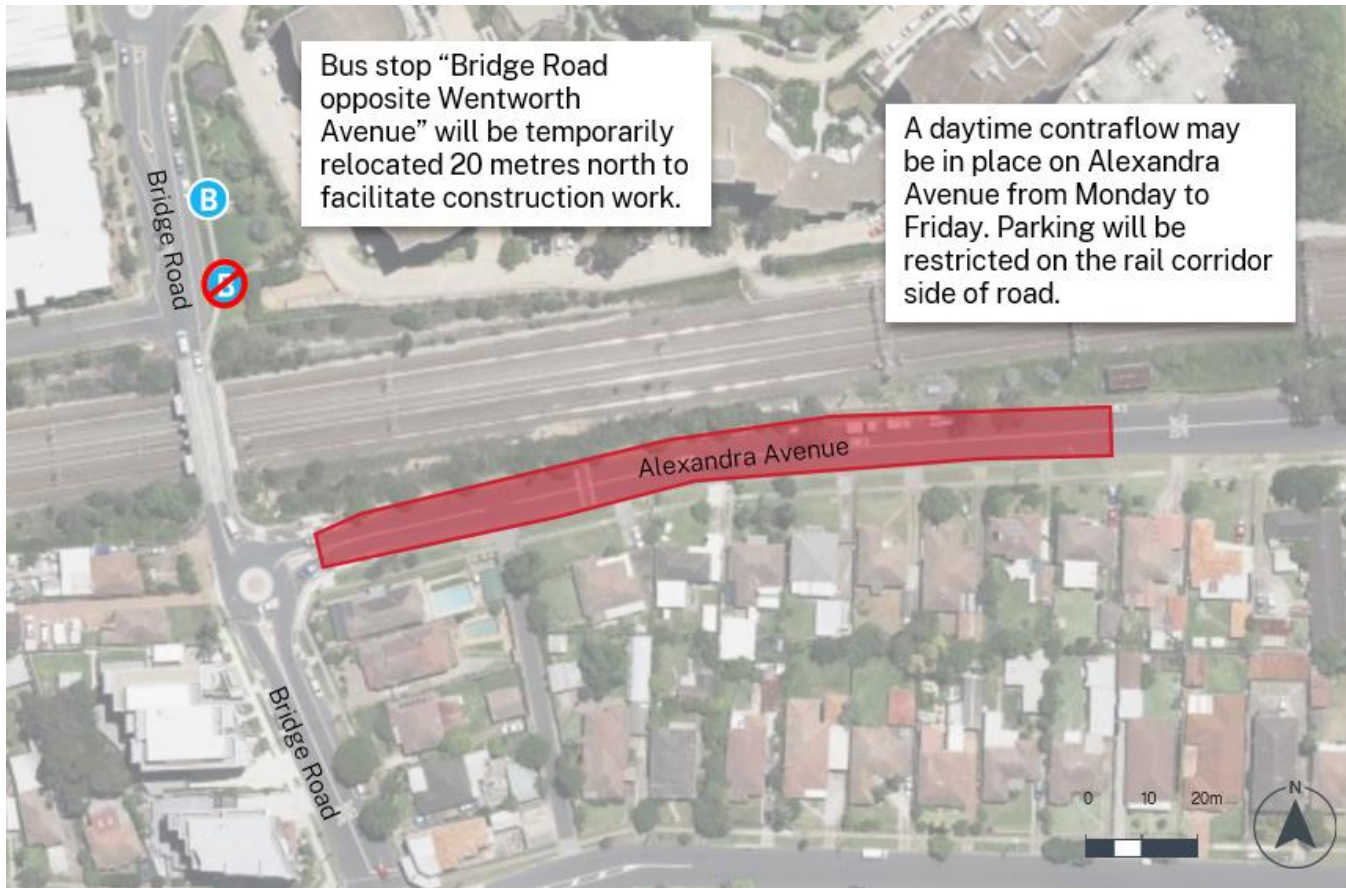
Noise

- These works may create additional noise throughout the day and at night.
- Standard construction hours are from **7am to 6pm Monday to Friday and 8am to 1pm on Saturdays.**
- Weekend work will be carried out from **5am Saturday 31 August to 10pm Sunday 1 September.**
- We will select low-noise compressors and equipment where low-noise alternatives are available.

We apologise for any inconvenience and thank you for your cooperation during these essential works.

Sydney Trains

Bus stop relocation



KEY  Contraflow arrangement  Temporary relocation of bus stop

Contact us

If you have any feedback or questions about the project and to subscribe to updates, please contact us:

Project Infoline **1800 684 490**
To report environmental concerns (24 hours) **1300 656 999**

projects@transport.nsw.gov.au

www.transport.nsw.gov.au/westmead-bridge-road-upgrade



For the latest traffic updates:
Call 132 701, visit livetraffic.com or download the app Live Traffic NSW



Interpreter service

For languages other than English call 131 450
Arabic • Greek • Hindi • Mandarin • Vietnamese

لطلب خدمة الترجمة الشفهية للغات غير الإنجليزية اتصل
بالرقم **131 450**

Για υπηρεσίες διερμηνείας σε άλλες γλώσσες εκτός από
τα Αγγλικά καλέστε το **131 450**

अंग्रेज़ी के अतिरिक्त अन्य भाषाओं के लिए दुभाषिया सेवा
131 450 पर कॉल करें

获取英语以外的其他语言口译协助服务可以致电**131 450**

Để có dịch vụ thông ngôn cho các ngôn ngữ khác tiếng
Anh, gọi số **131 450**