

Sydney Trains

Westmead Bridge Road Upgrade Wentworth Avenue Traffic Changes

From Monday 22 July to Sunday 1 September 2024

What we're doing

Sydney Trains is upgrading the road-over-rail bridge at Bridge Road, Westmead, to improve traffic flow in the Westmead precinct. **Please note, this notification is a further update to the previous July-August notification.**

The project includes:

- an upgraded bridge with three traffic lanes, one northbound and two southbound lanes to ease morning peak hour traffic.
- a new shared path on the eastern side and an upgraded footpath on the western side of the bridge.

Throughout July and August, works will be carried out on both sides of the bridge during standard construction hours.

Work will include:

- site access construction and mobilisation
- backfill and excavation
- piling
- bridge substructure construction.

Bridge work will also be carried out within the rail corridor during the following weekend:

- **From 5am Saturday 31 August to 10pm Sunday 1 September.**

We understand this work may have an impact on you and we appreciate your patience and understanding.

How this affects you

Traffic and Parking

- **Wentworth Avenue, between Lydbrook Street and Bridge Road, will become a one-way only street and left turn only onto Bridge Road, from 22 July to 1 September 2024 to facilitate construction work. During this time there will be no right turn access from Bridge Road onto Wentworth Avenue and from Wentworth Avenue onto Bridge Road.**
- A contraflow may be in place on Alexandra Avenue, between Bridge Road and Hawkesbury Road during weekdays. Traffic flow will be maintained in both directions.
- Traffic control will be on duty to assist motorists and pedestrians during the affected periods.
- There will be reduced parking on Alexandra Avenue near Bridge Road on the railway corridor side of the road.
- Buses replace trains for some rail lines during this period. Please plan ahead and visit www.transportnsw.info to find updated trackwork information.

Bus Stop Relocation

- **From Monday 1 July, Bus Stop "Bridge Rd opp Wentworth Ave" (Stop ID: 2145542) will be temporarily relocated 20 metres north to facilitate construction works.** See previous notification for details. This is available on our website.

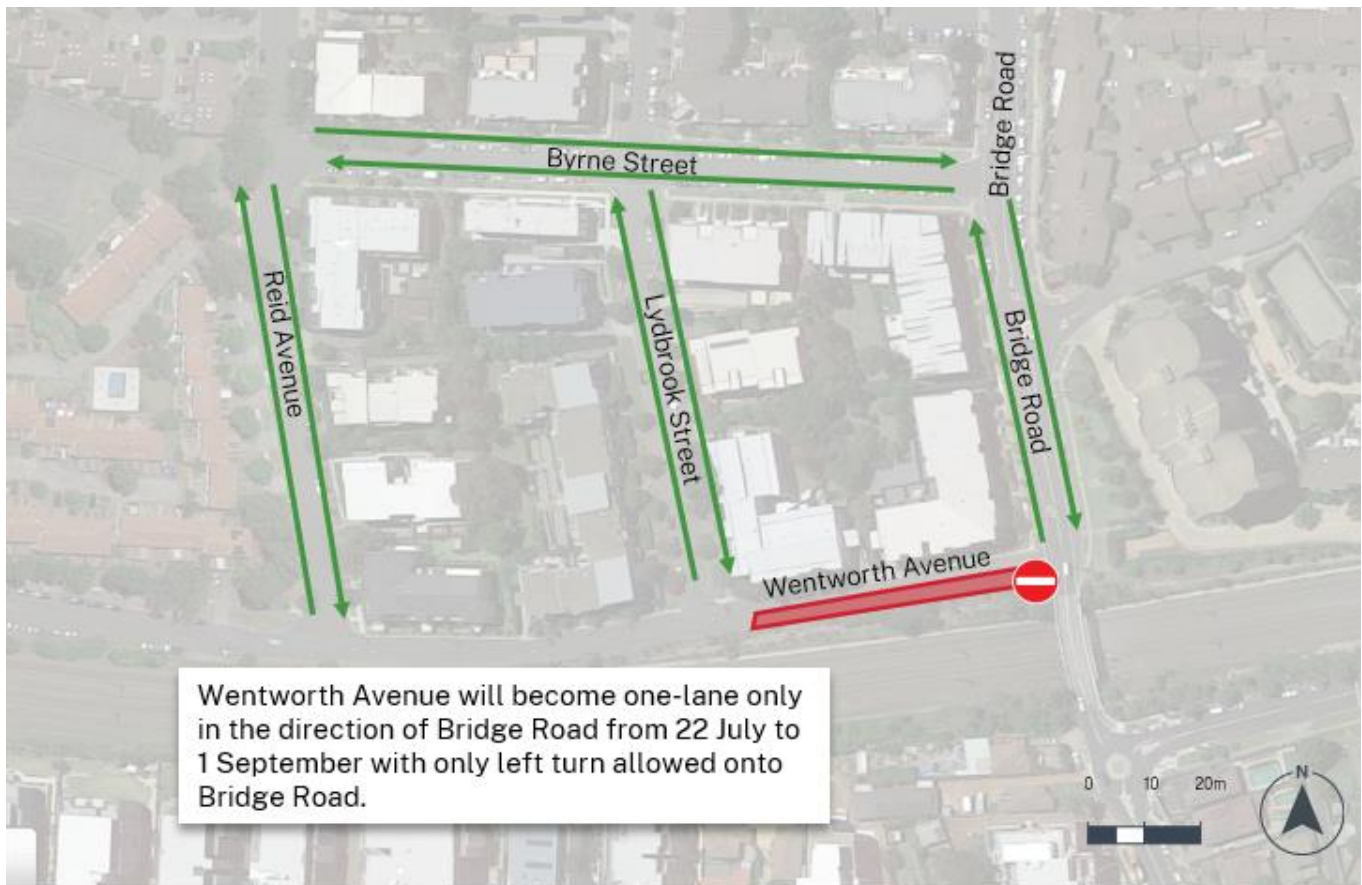
Sydney Trains

Noise


- These works may create additional noise throughout the day and at night.
- Standard construction hours are from **7am to 6pm Monday to Friday** and **8am to 1pm on Saturdays**.
- Weekend work will be carried out from **5am Saturday 31 August to 10pm Sunday 1 September**.
- We will select low-noise compressors and equipment where low-noise alternatives are available.

We apologise for any inconvenience and thank you for your cooperation during these essential works.

Traffic changes



KEY  Road lane closure
 Alternative route

 No entry, left turn only onto Bridge Road

Contact us

For upcoming work: www.transport.nsw.gov.au/sydtraincommunity

To report environmental concerns (24hours) **1300 656 999**

Project Infoline: **1800 684 490**

Email: projects@transport.nsw.gov.au