

Wolli Creek Power Supply Upgrade

Rail Service Improvement Program

September 2024



Transport for NSW acknowledges the Gweagal, Bidjigal and Gadigal Clans for the Eora Nation as the Traditional Custodians of the lands on which we work and pays respect to Elders past and present.

The Rail Service Improvement Program, formerly known as More Trains, More Services, enables a safer, more equitable, and integrated transport network where people can travel more safely, reliably, and efficiently across NSW.

What work are we doing?

In September, we will be removing redundant overhead wiring and electrical poles inside the rail corridor at Wolli Creek.

Please note this notification is in addition to the Arncliffe to Tempe and Wolli Creek August/September notification distributed in August 2024. To view all work activities across the program, please visit caportal.com.au/tfns/mtms and explore the construction map.

When and where we'll be working

Work will be undertaken inside the rail corridor between Thompson Street and Chisholm Street. Access to work areas will be via:

- Guess Avenue between Mount Olympus Boulevard and Bonar Street
- the site compound on Lusty Street.

Please see the location map on the back page.

Standard construction hours on this project are between **7am and 6pm Monday to Friday and 8am and 1pm on Saturdays**.

Out of hours work

Some work is required to take place outside of standard construction hours, between **6pm Thursday 19 September and 6pm Monday 23 September 2024**.

Why we work outside of construction hours

We schedule work outside of standard construction hours to take place during Sydney Trains trackwork periods when no trains are running, minimising disruptions to commuter services and improving the safety of our construction team and customers.

What will this mean for you?

You may notice:

- workers and construction vehicles
- increased noise from machinery and equipment, including mobile cranes, hand tools, chainsaws and other plant
- traffic controllers and signage.

Traffic changes on Guess Avenue

To safely complete the removal of electrical infrastructure, some traffic changes are required between **6am and 6pm on Saturday 21 and Sunday 22 September**, including:

- closing the southeast lane of Guess Avenue between Bonar Street and Mount Olympus. Traffic control will be in place to facilitate vehicle movements in both directions and on-street parking will not be impacted.
- intermittently closing driveway access to **95, 97 and 99 Bonar Street** from Guess



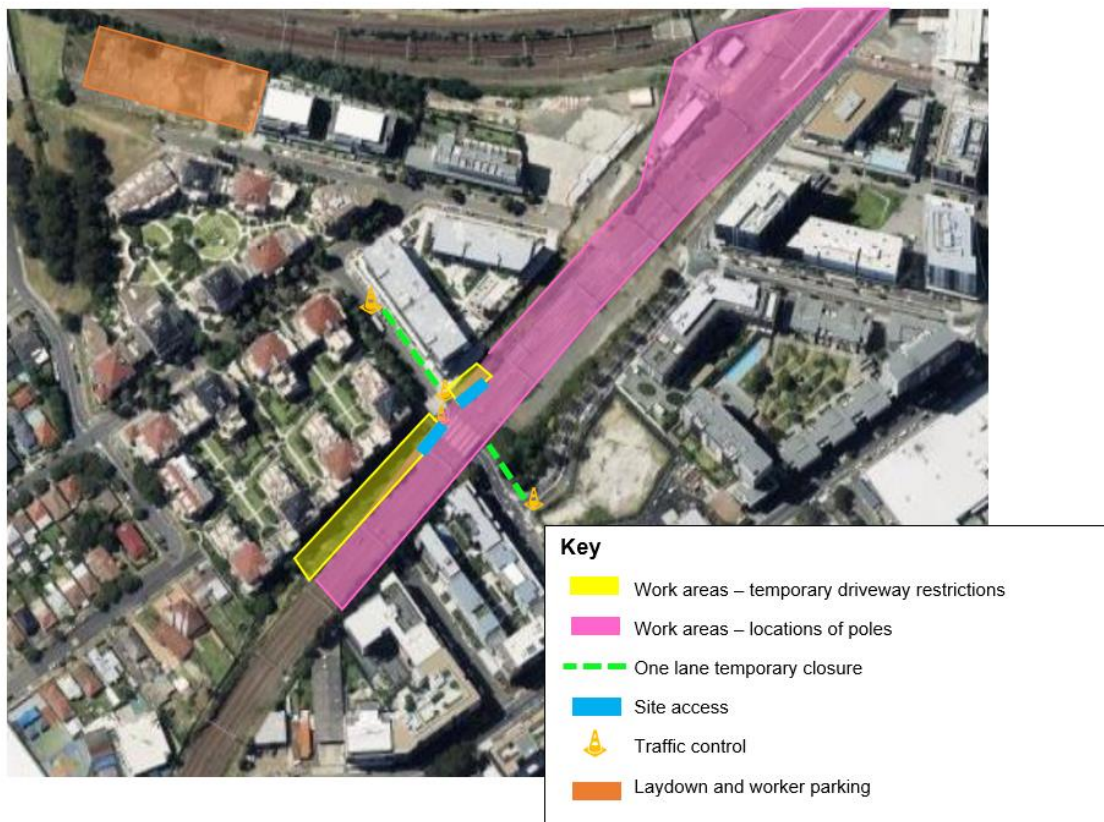
Avenue. This includes the Willis Street exit-only lane connecting to Guess Avenue beside 97 Bonar Street. Driveway access will be closed for periods of up to 10 minutes at a time and traffic control will be in place to assist motorists with these changes. Residents and motorists are reminded to use caution when travelling in the area and that they may

experience delays accessing local streets and properties.

Managing our impacts

We understand construction activities may cause disruption to our closest neighbours, and every effort will be made to minimise impacts where possible.

Location of work areas



Contact us



Project Infoline **1800 684 490**
24-hour Construction Response Line
1800 775 465



projects@transport.nsw.gov.au



yoursay.transport.nsw.gov.au/mtms



Visit the online portal go to
caportal.com.au/tfnsw/mtms



For the latest traffic updates:
Call 132 701, visit livetraffic.com or
download the app Live Traffic NSW



Interpreter service

For languages other than English call 131 450
Arabic • Greek • Hindi • Mandarin • Vietnamese

لطلب خدمة الترجمة الشفهية للغات غير الإنجليزية اتصل
بالرقم **131 450**

Για υπηρεσίες διερμηνείας σε άλλες γλώσσες εκτός από
τα Αγγλικά καλέστε το **131 450**

अंग्रेज़ी के अतिरिक्त अन्य भाषाओं के लिए दुभाषिया सेवा
131 450 पर कॉल करें

获取英语以外的其他语言口译协助服务可以致电**131 450**

Để có dịch vụ thông ngôn cho các ngôn ngữ khác tiếng
Anh, gọi số **131 450**

www.transport.nsw.gov.au/privacy-statement#Your_Privacy