

Essential bridge works at Angus Bridge on Mitchell Highway near Larras Lee from Monday 29 July

July 2024



Transport for NSW acknowledges the Traditional Custodians of the lands on which we work and pays respect to Elders past and present.

Transport for NSW is carrying out essential bridge inspection and geotechnical work on Angus Bridge over Molong Creek, 11km north of Molong, on the Mitchell Highway.

What work are we doing?

The work will include a structural inspection of Angus Bridge using a truck-mounted underbridge platform to allow workers to safely and easily access the underside of the bridge. Geotechnical work including using a drilling rig on and under the bridge deck will also be carried out.

We have included a map to show the location of the work.

When we'll be working

We will be working continuously (24 hours each day) from Monday 29 July to Friday 1 August.

We expect to complete the work in **five days**, however all work activities and dates are subject to weather and site conditions.

What will this mean for you?

There will be temporary impacts to traffic on the approach to the bridge from both directions and at the bridge site to ensure the work zone is safe.

The **road will remain open with single lane closures, stop/go traffic controls and a reduced speed limit of 30km/h in place over the five days** which may affect travel times.

Please keep to the reduced speed limit and follow the direction of traffic controllers and signs. Motorists should allow up to **five minutes** extra travel time during this work.

For the latest traffic updates, you can download the Live Traffic NSW app, visit [livetraffic.com](https://www.livetraffic.com) or call 132 701.

Impacts for heavy vehicles and OSOM vehicles

A 5.0m width restriction will be in place for the duration of the works. Operators of OSOM (oversize and overmass) combinations under Notice will still be able to travel through the works. Operators with permits to travel through this area can travel through the site if they **do not exceed 5.0 metre's wide.**

Please note, vehicles travelling **under a Permit MUST NOT** travel off the approved route listed in the permit unless an updated permit is obtained from the National Heavy Vehicle Regulator (NHVR).

Please contact **0427 499 701** if you have site specific information requirements that need to be met during this time.

Managing our impacts

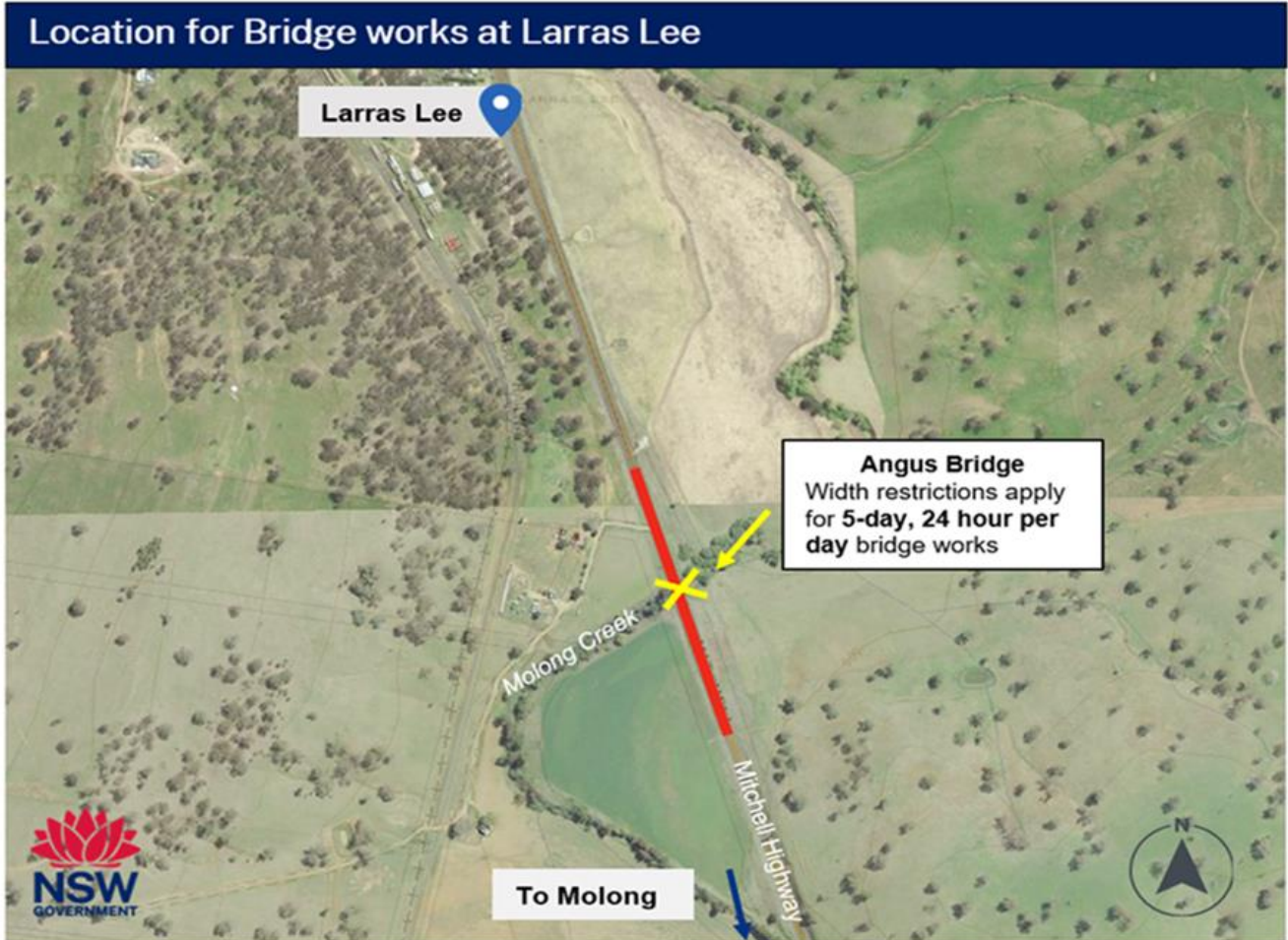
We aim to manage our work to minimise impacts to the community and the environment.

The work will involve the use of machinery which generates some noise. We will make every effort

to minimise noise by completing louder activities earlier in the evening and turning off machinery and vehicles when not in use.

We understand that the work will generate some inconvenience and we thank you for your patience.

Location of work area



Contact us



1800 167 499



western.projects@transport.nsw.gov.au



51-55 Currajong Street
Parkes NSW 2870



nswroads.work/westregion



For the latest traffic updates:
Call 132 701, visit [livetraffic.com](https://www.livetraffic.com) or
download the app Live Traffic
NSW <https://www.livetraffic.com/>



Interpreter service

For languages other than English call 131 450
Arabic • Greek • Hindi • Mandarin • Vietnamese

لطلب خدمة الترجمة الشفهية للغات غير الإنجليزية اتصل
بالرقم 131 450

Για υπηρεσίες διερμηνείας σε άλλες γλώσσες εκτός από
τα Αγγλικά καλέστε το 131 450

अंग्रेज़ी के अतिरिक्त अन्य भाषाओं के लिए दुभाषिया सेवा
131 450 पर कॉल करें

获取英语以外的其他语言口译协助服务可以致电131 450

Để có dịch vụ thông ngôn cho các ngôn ngữ khác tiếng
Anh, gọi số 131 450

www.transport.nsw.gov.au/privacy-statement#Your_Privacy