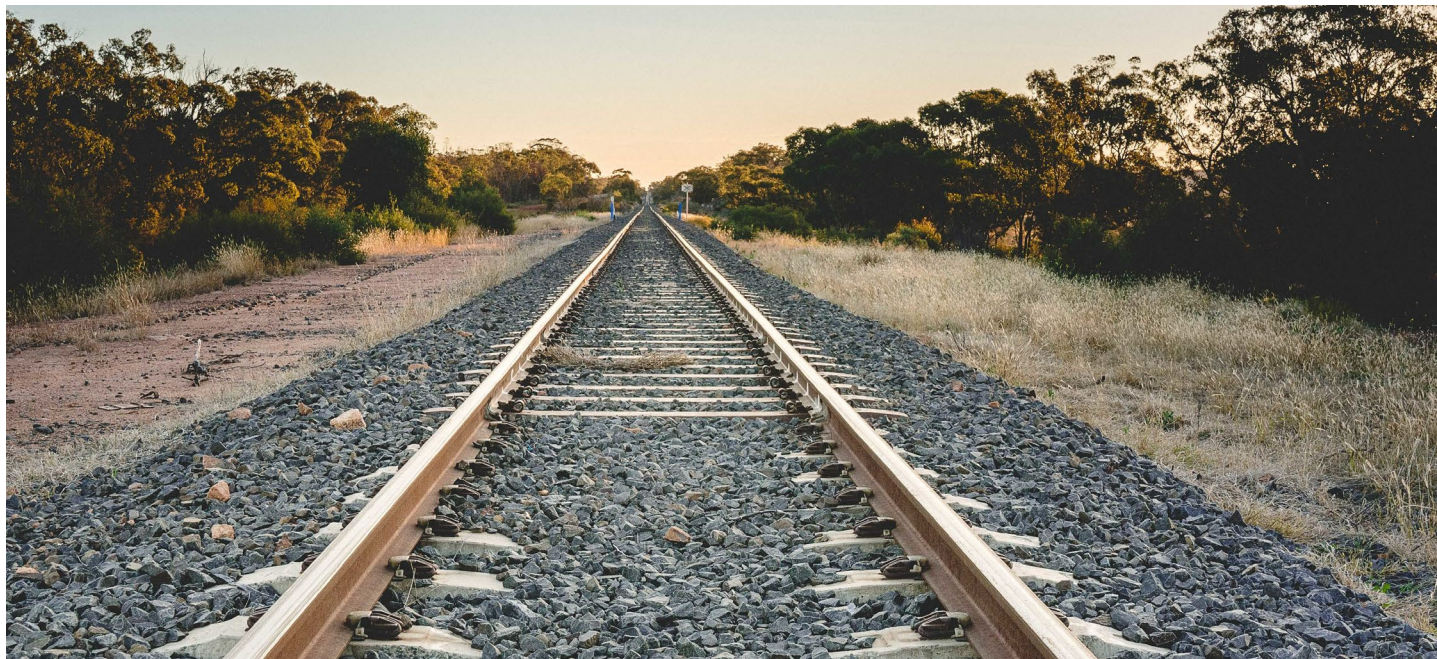


Transport for NSW

Community Newsletter

Bungendore Rail Corridor remediation project

December 2024



Transport for NSW (Transport) has a program to manage contaminated land along some rail lines in regional NSW to ensure the health and safety of communities, our workers, and the environment.

Transport has identified elevated levels of lead in the Bungendore Rail Corridor. While the rail line at Bungendore is currently used to carry passengers between Sydney and Canberra, it was previously used to transport lead ore from the mine at Captains Flat to Bungendore in small, uncovered wagons.

At Bungendore, the lead ore was transferred into larger wagons and then transported via rail to Port Kembla.

In this update

The Transport team have been working hard to progress the planning for the remediation and deliver outcomes for the community.

In this newsletter you will find:

- Project overview
- Latest news
- Next steps
- Related projects
- How to contact us.

Transport for NSW acknowledges the Traditional Custodians of the lands on which we work and pays respect to Elders past, present, and emerging.



Project overview

Bungendore Rail Corridor

In February 2021, Transport identified elevated levels of lead in the soil in the rail corridor due to past mining activities.

The Site was reported to the EPA in September 2021 and declared a significantly contaminated site in April 2023.

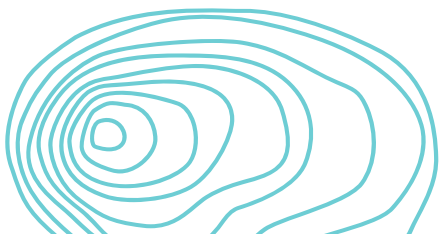
Transport submitted a Voluntary Management Proposal (VMP) to the NSW Environment Protection Authority (EPA) for approval in June 2023. The EPA approved the VMP in August 2024 and a copy is available on the project website.

Elevated levels of lead were also identified at two nearby properties. Transport is working directly with the owners to manage the sites.

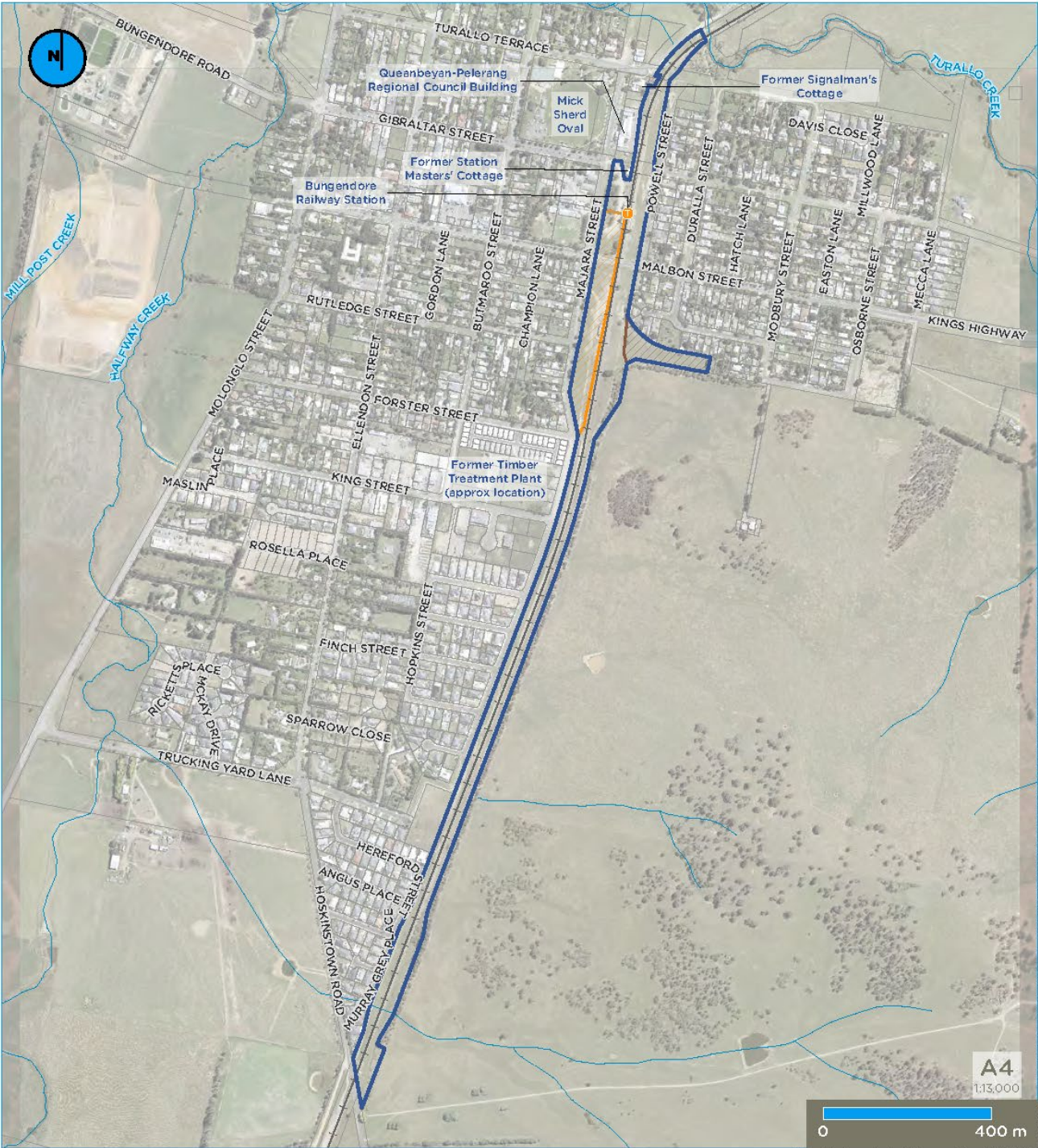
Transport has implemented an Interim Environmental Management Plan to ensure the safety of the community.

This includes fencing of the informal car park near Bungendore Train Station to prevent access to the area.

Transport continues to work with the independent EPA-accredited Site Auditor to ensure our work meets the requirements of the Contaminated Land Management Act and continue to update the EPA as we work through the steps to remediate the Site.



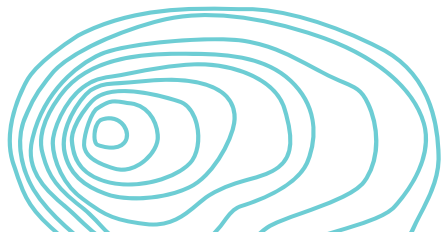
Project map



Legend

- Site boundary
- Lot boundary (NSWSS)
- Railway (NSWSS)

- Investigation areas
- Area A
 - Area B



Latest news and next steps

Bungendore Rail Corridor

The project is in the Detailed Site Investigation (DSI) phase. Transport has engaged Ramboll to conduct the DSI. Site investigations will start in February 2025 and we will update the community to provide more information before work starts.

A Sampling Analysis Quality Plan (SAQP) and Interim Audit Advice is being prepared for the DSI and will be available on our website before work starts.

Transport has also obtained Heritage approval to complete the investigation site works in the rail corridor.

Detailed Site Investigation – February 2025

Site work for the DSI is expected to start in February 2025. The objectives of the DSI are to:

- characterise and delineate the contamination at the site.
- provide advice on the suitability of the land for the current and future land use.
- inform future remediation and/or management of the land required to make it suitable for its intended land use.
- ensure the Interim Environmental Management Plan is suitable for the site.

Air monitoring program

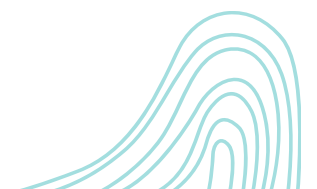
Transport is planning to implement an air monitoring program for 12 months to determine if there are any potential health risks associated with lead in dust.

This will include the installation of dust monitors on residential properties in the local area. Transport will consult with property owners and Queanbeyan-Palerang Regional Council on the installation of the monitors in early 2025.

Next steps

- Carry out the DSI work
- Finalise the DSI and obtain endorsement from an independent EPA-accredited Site Auditor by July 2025
- Update the Interim Environmental Management Plan (IEMP) to reflect the findings of the DSI
- Finalise the IEMP and obtain endorsement from an independent EPA-accredited Site Auditor by August 2025
- Implement a 12-month air monitoring program.

After the DSI is complete, Transport will determine the next steps for this project.



Related projects

Bungendore to Captains Flat Rail Corridor

The initial investigation along the rail corridor between Bungendore and Captains Flat identified elevated levels of lead within the ballast along the length of the rail corridor.

The Site was reported to the NSW EPA in July 2022 and is pending a determination.

In February 2024, Transport updated the Rail Corridor X-ray Fluorescence Survey to reflect the comments from the Independent EPA-accredited Site Auditor. The survey report was published on the project [website](#) in February 2024 and the Interim Audit Advice was published in May 2024.



Rail corridor between Bungendore and Captains Flat

Detailed Site Investigation

Transport is in the process of procuring for a Detailed Site Investigation (DSI). The DSI will help Transport confirm the extent of the contamination and provide additional information for the remediation program.

The objectives of the DSI are to:

- characterise and delineate the contamination at the site.
- identify and characterise potential risks to human health and environment.
- provide advice on the suitability of the land for the existing land use.
- inform future remediation and or management of the land required to make it suitable for its intended land use.

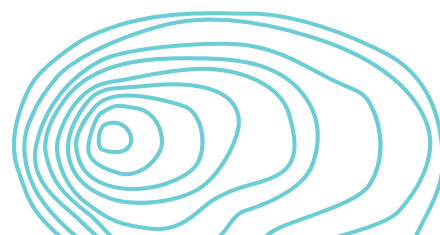
The DSI will include investigations into the corridor and on some adjoining privately owned land. The DSI will include soil, surface water, ground water and air sampling and analysis.

Investigations for the DSI are expected to start in March and be completed by late 2025. This is subject to gaining access approvals with the relevant parties.

Human Health and Environment Risk Assessment

After the DSI is complete, a Human Health and Environment Risk Assessment (HHERA) will be conducted to identify potential risks to human health and the environment including ecology, agricultural production / livestock, the travelling stock route and informal recreational use such as walking, motorbike riding and horse riding.

When the HHERA is complete, an Interim Environmental Management Plan will be prepared to identify control measures to manage the potential risks.



Community engagement

Transport is committed to keeping the community informed and will do this using a variety of communication channels such as email, community notifications, social media, our project website and project newsletters.

Transport will also hold community information sessions from time to time, either face to face in the local area or online.



Contact us



Project Infoline **1800 491 566**



landassessment@transport.nsw.gov.au



<http://www.transport.nsw.gov.au/projects/current-projects/bungendore>



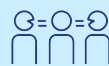
**18 Lee Street, Chippendale NSW 2008 |
PO Box K659, Haymarket NSW 1240**



Scan to register for project updates and complete online form.



For the latest traffic updates:
Call 132 701, visit livetraffic.com or
download the app Live Traffic NSW



Interpreter service

For languages other than English call **131 450**
Arabic • Greek • Hindi • Mandarin • Vietnamese

طلب خدمة الترجمة الشفهية للغات غير الإنجليزية اتصل
بالرقم **131 450**

Για υπηρεσίες διερμηνείας σε άλλες γλώσσες εκτός από
τα Αγγλικά καλέστε το **131 450**

अंग्रेज़ी के अतिरिक्त अन्य भाषाओं के लिए दुभाषिया सेवा
131 450 पर कॉल करें

获取英语以外的其他语言口译协助服务可以致电**131 450**

Để có dịch vụ thông ngôn cho các ngôn ngữ khác
tiếng Anh, gọi số **131 450**

www.transport.nsw.gov.au/privacy-statement#Your_Privacy