



Work on Soldiers Parade, Edmondson Park from Thursday 18 January 2024

Edmondson Park Commuter Car Park Program

Community Notification | January 2024



Transport for NSW acknowledges the Traditional Custodians of the land and pays respects to Elders past and present.

Construction is underway on the Edmondson Park North Commuter Car Park, which will provide around 900 new parking spaces. This will result in a net increase of over 700 additional parking spaces for passengers when the existing car park to the north of the station is closed to the public.

What work are we doing?

Road work along Soldiers Parade will commence from **Thursday 18 January 2024 for up to two months**, to upgrade pathways and traffic signals at the intersection of Soldiers Parade and Henderson Road. All work is subject to weather and approvals. Upcoming work includes:

- Removing existing road surface and reinstate new
- Install new footpaths
- Installing cabling and poles for new traffic lights
- Revised line marking and signage to suit the new intersection layout

When and where we'll be working

We'll be working along Soldiers Parade, Edmondson Park and the intersection with Henderson Road (refer to map overleaf).

Standard work hours are **7am to 6pm, Monday to Friday and 8am to 1pm, Saturday**.

Subject to approval, we may need to work at night to limit disruption to motorists and reduce safety risks to our workers, pedestrians, bus, and road users. Further details will be provided as required.

Traffic impacts

There will be temporary traffic impacts while we complete this work. This includes minor traffic flow changes, a reduced speed limit of 40km/h and traffic control.

Up to six parking spaces along Soldiers Parade will be permanently removed from **Thursday 18 January 2024** and converted into a new merging lane (refer to map overleaf).

While we complete this work, you may notice:

- workers and vehicles
- traffic controllers and signage
- lane changes and reduced speed limit
- noise from machinery and equipment

Equipment to be used may include excavators, rollers, road saws, tipping trucks, concrete mixers, service vehicles, various delivery vehicles, mobile cranes, forklifts, generators and hand tools.

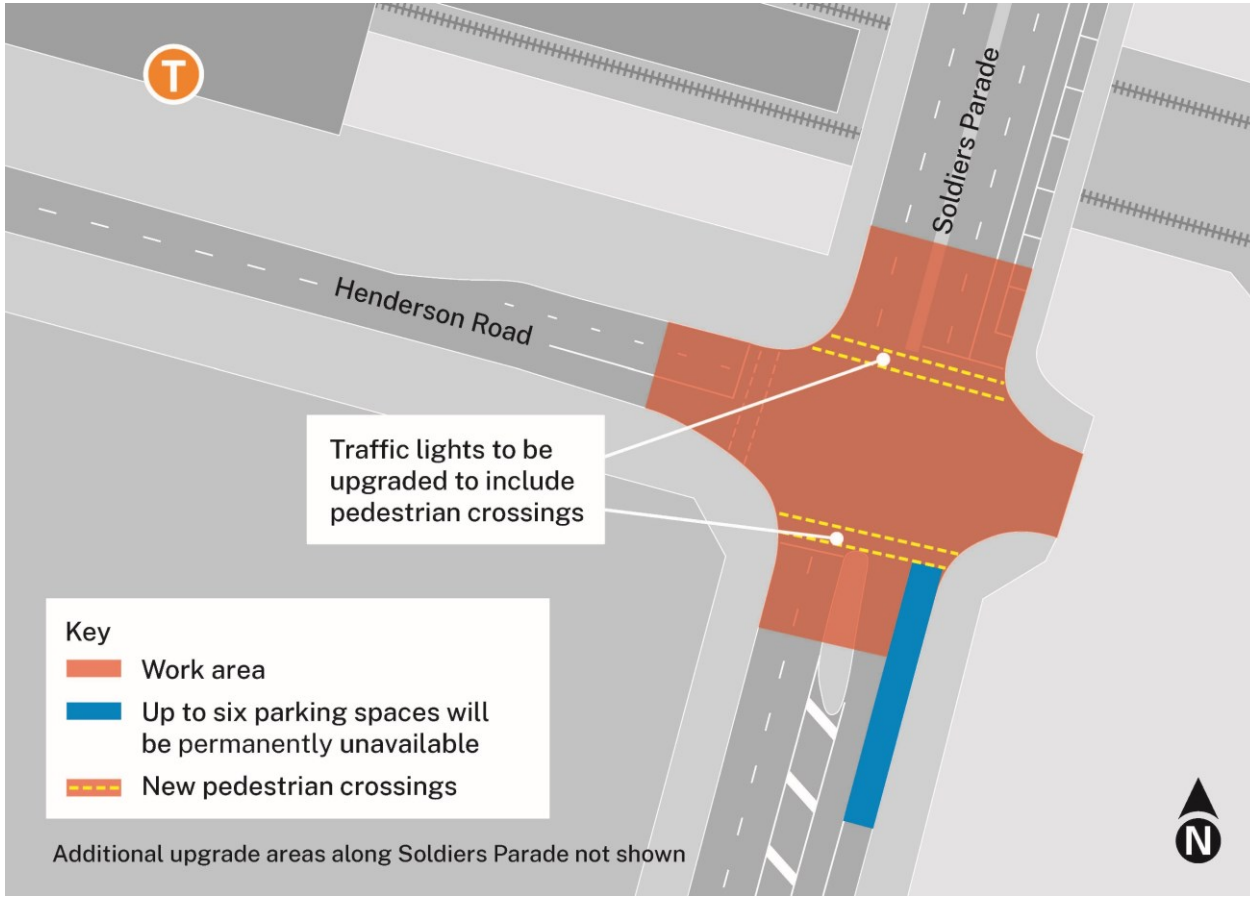
Please keep to the speed limits and follow the direction of traffic controllers and signs.

For the latest traffic updates, you can call 132 701, visit livetraffic.com or download the Live Traffic NSW App. Thank you for your patience as we carry out this important work.

Thank you for your patience and understanding while we carry out this important work.



Site map of the Soldiers Parade intersection upgrade



Contact us



Project Infoline **1800 684 490**
24-hour Construction Response Line
1800 775 465



projects@transport.nsw.gov.au



Visit the online portal go to
www.transport.nsw.gov.au/edmondsonpark



For the latest traffic updates:
Call 132 701, visit livetraffic.com or
download the app Live Traffic NSW



Interpreter service

For languages other than English call 131 450
Arabic • Bengali • Hindi • Nepali • Urdu

لطلب خدمة الترجمة الشفهية للغات غير الإنجليزية اتصل
بالرقم **131 450**

ইংরেজি ছাড়া অন্য ভাষায় দোভাষী পরিষেবা পেতে **১৩১ ৪৫০**
নম্বরে কল করুন

अंग्रेज़ी के अतिरिक्त अन्य भाषाओं के लिए दुभाषिया सेवा **131 450**
पर कॉल करें

अंग्रेज़ी बाहेक अन्य भाषाहरूमा दोभाषे सेवाको लागि **१३१ ४५०**
मा सम्पर्क गर्नुहोस्।

انگریزی کے علاوہ دیگر زبانوں میں ترجمان کی خدمت کے لیے
131 450 پر کال کریں

www.transport.nsw.gov.au/privacy-statement#Your_Privacy