

# Jervis Bay Road to Hawken Road upgrade

## Princes Highway upgrade program

Community update | July 2024



## Planning for the upgrade of the Princes Highway between Jervis Bay Road and Hawken Road continues.

The project is part of the Princes Highway upgrade program which aims to deliver safer and more reliable journeys along the Princes Highway on the NSW South Coast.

The project includes upgrading six kilometres of the existing highway between Jervis Bay Road and Hawken Road to two lanes in each direction, separated by a median barrier to improve safety. It also includes an intersection upgrade at Hawken Road, Tomerong.

### Project overview

The \$500 million upgrade, funded by the Australian and NSW governments, has been prioritised as the first stage of the 20-kilometre Princes Highway upgrade between Jervis Bay Road and Sussex Inlet Road. The remainder of the upgrade from Hawken Road to Sussex Inlet Road will be delivered at a later stage.

The project team is continuing to investigate ways to refine the highway corridor to reduce impacts to properties and the environment.

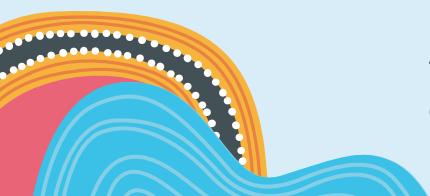
Field and environmental investigations were also carried out and access and connection points to the highway have been considered. This work will inform the concept design as we continue to plan the highway's upgrade.



Princes Highway, Falls Creek NSW

### Project benefits

- Improve transport network resilience
- Improve traffic efficiency and connectivity
- Support sustainability of the region
- Improve freight access and efficiency
- Respect our community and environment
- Improve network safety for all Transport customers
- Enable an increase in the use of active and public transport



## Jervis Bay Road and Princes Highway intersection upgrade



Construction of our neighbouring project, the Princes Highway and Jervis Bay Road intersection upgrade, is under way and due for completion in late 2027, weather permitting.

Planning continues to determine how the Jervis Bay Road to Hawken Road upgrade will tie into this new intersection.

More details will be provided about the connection of the highway upgrade as the Jervis Bay Road to Hawken Road project moves into its next phase of concept design completion.

The Jervis Bay Road intersection upgrade is a complex project to construct, given its size and impacts to the already busy stretch of the highway and connection point.

We will continue to work closely with the community and local residents to ensure the construction has the least possible impact on journeys and liveability in the local area.

### Keep up to date with the project

Scan this QR code to learn more about the **Jervis Bay Road intersection** upgrade and to subscribe to our mailing list for future construction updates.



## How was the Hawken Road intersection determined?



The Princes Highway and Hawken Road intersection will be an S-type grade-separated intersection (overpass) connecting Hawken Road to Blackbutt Range Road.

The upgraded intersection will allow for all traffic movements and provide east-west connectivity between these two roads.

Five options for the Hawken Road intersection upgrade were reviewed in a multi-criteria assessment process to identify the preferred option.

On balance, the preferred option best meets the project objectives in improving safety, efficiency, connectivity, network resilience and freight access.

The key benefit of this option is a smaller footprint compared to traditional grade-separated intersections (which typically feature roundabouts on either side). The S-type means fewer impacts to property and valuable ecological lands, while also providing safe movements onto and off the Princes Highway.



**The design of the S-type intersection at Princes Highway and Hawken Road**

## What is a Review of Environmental Factors?



The Review of Environmental Factors (REF) forms an important part of the project's planning, where Transport for NSW (Transport) details how the project impacts the surrounding area, including flora and fauna, noise and vibration, and Aboriginal heritage.

The REF process also outlines how Transport proposes to mitigate the impacts.

Like many projects along the Princes Highway corridor, the planning and development lifecycle for this project is complex and multi-faceted.

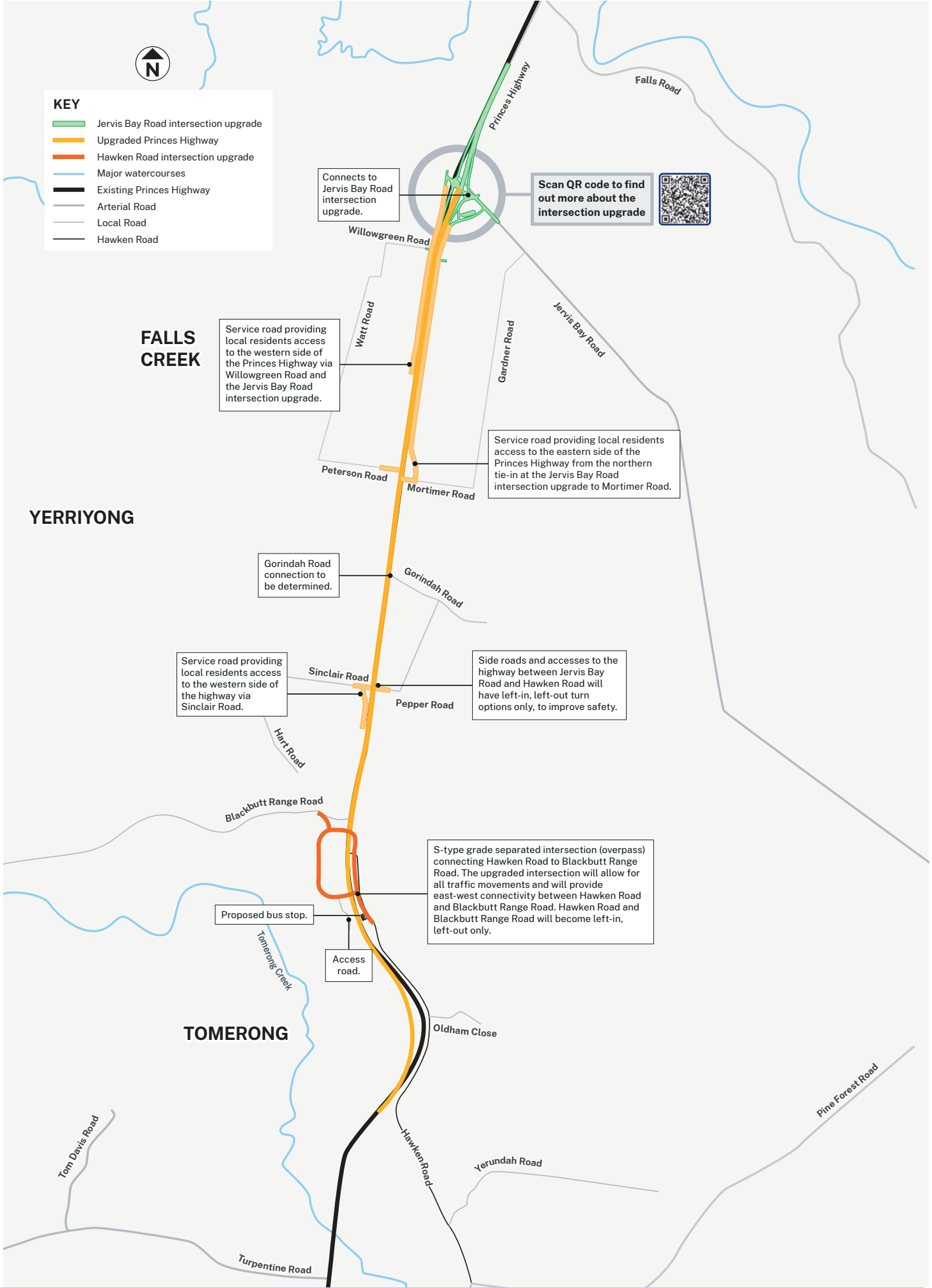
Transport has carried out substantial planning work during recent years, however, further investigations to inform the concept design and the REF are required.

We look forward to giving the community the opportunity to comment on the design, environmental impacts and Transport's proposed mitigation measures.



**The REF assesses the various impacts the project will have on the surrounding area**

# Preferred option for the highway upgrade



## Have your say

Thank you to all those who have already provided feedback. We will continue to review and consider your comments during the ongoing planning of the project.

Feedback to date has included comments on safety, local access to the highway, property and environmental impacts, as well as impacts to surrounding communities.

### Tell us your thoughts

Provide your feedback by pinning your comment on the project area map at <https://www.haveyoursay.nsw.gov.au/princes-highway-upgrade> or emailing us at [jbhr@transport.nsw.gov.au](mailto:jbhr@transport.nsw.gov.au)

Feedback will be addressed during the REF process.

## Next steps

Discussions with potentially impacted property owners will continue, and we will also continue to work through how the highway upgrade impacts local access for all road users.

As part of our continued planning, we will carry out an environmental assessment to better understand local flora and fauna.

Our planning work for all projects in the area includes providing infrastructure such as dedicated fauna crossings or underpasses, rope bridges, fencing and glider poles to help facilitate fauna connectivity.

Transport is in the process of developing the concept design and environmental assessment of the highway upgrade.

## Project milestones

-  Announce project
-  Early investigations and select strategic corridor
-  Community engagement – feedback on strategic corridor
-  Select Stage 1 and continue to investigate future stages
-  Identify preferred option
-  Community engagement – feedback on preferred option
-  Development of environmental assessment and concept design
-  Community engagement – feedback on environmental assessment and concept design
-  Detailed design
-  Award tender
-  Construction

## Community drop-in sessions

Keep an eye on the project website for details of our upcoming community drop-in sessions and subscribe to our mailing list for email updates including venues and dates.

Answers to frequently asked questions can be viewed at [nswroads.work/jbhr](https://nswroads.work/jbhr)



Keep an eye out for details of our upcoming community drop-in sessions

## Contact us



**Project Infoline: 1800 719 759**



**[jbhr@transport.nsw.gov.au](mailto:jbhr@transport.nsw.gov.au)**



**[nswroads.work/jbhr](https://nswroads.work/jbhr)**



**PO Box 477, Wollongong, NSW 2520**



### For the latest traffic updates:

Call 132 701, visit [live.traffic.com](https://live.traffic.com) or download the app Live Traffic NSW



### Interpreter service

For languages other than English call **131 450**

[www.transport.nsw.gov.au/privacy-statement#Your\\_Privacy](https://www.transport.nsw.gov.au/privacy-statement#Your_Privacy)