

# Kamay Ferry Wharves

## Community update

September 2024



Transport for NSW acknowledges the Gweagal and Bidjigal people as the Traditional Custodians of the lands on which we work and pays respect to Elders past and present.

The NSW Government is replacing the previous ferry wharves at La Perouse and Kurnell as part of the Kamay Botany Bay National Park, Kurnell Master Plan.

This notification provides an update on the work we have completed so far, a seagrass restoration update, upcoming construction work and more.

### Share your memories of the previous wharves

We've enjoyed hearing people's memories of the previous wharves, which were damaged by a storm in 1974. We'd love to share some of these on our website and in communication material.

Please share your stories, pictures and videos with us by **Monday 28 October 2024**.

You can email them to [kamayferrywharves@transport.nsw.gov.au](mailto:kamayferrywharves@transport.nsw.gov.au)

Or give us a call on **1800 718 556**.

### Snapshots of work completed to date

#### Additional parking spaces

We have installed 18 additional parking spaces on Anzac Parade, La Perouse, which are now open to traffic.

#### Vessel berthing areas

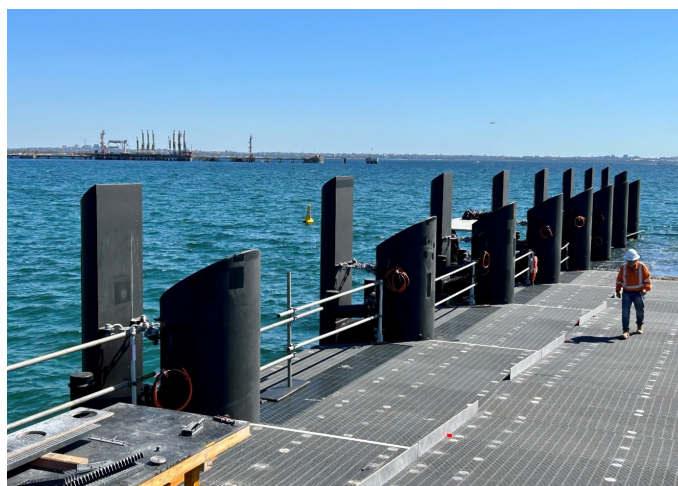
At both wharves, all floor modules and mesh flooring for the berthing areas has been installed. The handrails and lighting will be next.

Pile corrosion protection work (called pile wrapping) has also started.

The image below left shows the berthing aluminium modules being installed at La Perouse. On the right you can see fish swimming around the piles below.



The following image shows installation of the non-slip mesh flooring on the berthing area at Kurnell.

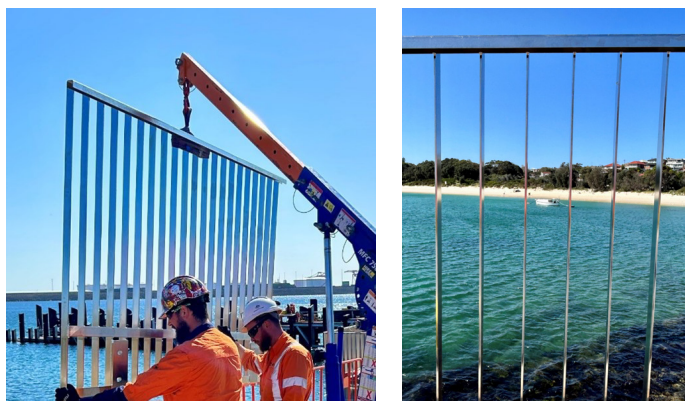


## Railings

We've started to install the stainless-steel railings (called balustrade) on the approach jetty section at La Perouse and work will start at Kurnell soon. A wooden handrail with integrated LED lighting will also be installed.

Two sections of the balustrade will be lowered on each wharf to further support people with disabilities fishing (as per the Accessible Fishing Platform Guidelines).

Images below show installation of the balustrade at La Perouse.



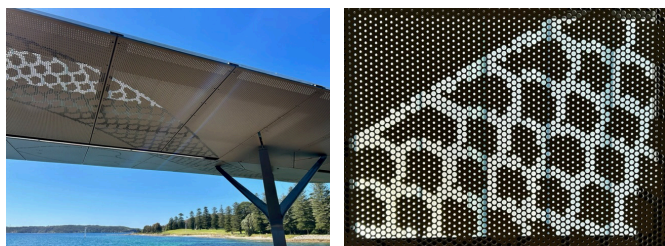
## Wharf shelters

Installation of the wharf shelter columns and ceiling artwork is nearly complete.

The image below left shows shelter construction progress at La Perouse, and right at Kurnell.



Below images provide a glimpse of the beautiful ceiling artwork recently installed at Kurnell.



## Temporary causeway removal

We've completed removal of the temporary causeway at Kurnell, and removal work on the La Perouse causeway has started.

## Wharf entrances

We've been busy paving, concreting and landscaping the wharf entrances.

The image below left shows paving work in progress at the entrance to the wharf at Kurnell, and on the right, we have reinstated the Monument Track.



At La Perouse, the boomerang-shaped planter boxes have been landscaped with native plants. The Timbery Reserve Plaque has been reinstated on a new raised sandstone plinth, and the new bike parking hoops are in.

Bins and seating have also arrived and will be installed soon. The image below left shows landscaping work at La Perouse, and right are the new bike hoops. The last image shows the new timber seats ready to be installed.



## Monitoring threatened marine species

As part of our environmental safeguards and mitigation measures, we carried out syngathid/seahorse and Black Rockcod inspections before our marine construction work.

We haven't sighted any Black Rockcod within our construction zones during our inspections to date, but as the weather warms up and more people dive and snorkel in the bay, it is a good reminder to keep your eye out for this vulnerable species.

The Department of Primary Industries maintains a database of threatened species in NSW to monitor the number, location and movements of these important species. You can contribute by reporting your sightings to help them better understand and manage the State's aquatic biodiversity via their website

[dpi.nsw.gov.au/fishing/threatened-species/report-it](https://dpi.nsw.gov.au/fishing/threatened-species/report-it)

You can also learn more about the Black Rockcod on their website

[dpi.nsw.gov.au/fishing/threatened-species/what-current/vulnerable-species2/black-rockcod](https://dpi.nsw.gov.au/fishing/threatened-species/what-current/vulnerable-species2/black-rockcod)

## Seagrass restoration update

As part of our Marine Biodiversity Offset Strategy (MBOS), UNSW and the Gamay Rangers are collecting naturally detached *Posidonia australis* shoots from local beaches, storing them in tanks, and then replanting them in the restoration zone at Kurnell. So far, the teams have:

- collected over 4900 naturally detached shoots to use in the replanting efforts
- achieved restoration of over 390m<sup>2</sup> of *Posidonia australis* seagrass at Kurnell through translocation (which was completed last year)

and the ongoing replanting of naturally detached shoots.

For more information, see the seagrass monitoring report 3 on the project documents webpage (see last page for link).

Check out some pictures of the local marine life taken by UNSW during their work.

Below image shows a Blue Swimmer Crab hanging out in the Kurnell seagrass restoration area.



Below image shows a Flounder swimming past a seagrass survey area at Kurnell.



## Construction progress at Kurnell (left) and La Perouse (right), 29 August 2024



## Upcoming construction work

Over the next few months, you will see:

- continued installation of balustrades, lighting, deck elements, wharf safety signage, furniture and roofing structures
- continued work on the wharves' entrances including landscaping and planting
- testing and checks (called commissioning) of the new structures and equipment, including nighttime testing of new wharves' lighting
- installation of new accessible parking spaces on Anzac Parade (near the front of the current construction site compound)
- removal of construction materials, equipment and site buildings as certain work activities are completed
- re-grassing areas within the construction zones.

All work activities and dates are subject to weather and site conditions.

We are working hard to complete the wharves by late-2024.

## What will the wharves be called?

In recognition of the close connection the wharves have to the Kamay Botany Bay National Park and the National Park Master Plan, the wharves will be referred to as:

- Kamay Wharf – La Perouse
- Kamay Wharf – Kurnell.

## How to berth your boat

The wharf berthing area is fixed, accessible, and slopes downward to provide berthing areas at all tidal levels.

The number of vessels that can berth at any one time is dependent on the tide, length of the vessel and freeboard, and where passengers will disembark.

Temporary berthing will be available. A maximum berthing time limit will be confirmed closer to the wharves opening.

Read more in our vessel berthing information sheet on the project documents webpage [transport.nsw.gov.au/projects/current-projects/project-documents-kamay-ferry-wharves](https://transport.nsw.gov.au/projects/current-projects/project-documents-kamay-ferry-wharves)

## Contact us



Project Infoline **1800 718 556**



**kamaywharves@mcdgroup.com**



**nswroads.work/kamayferrywharves**



Kamay Ferry Wharves Project,  
Transport for NSW, Community and Place  
PO Box K659, Haymarket NSW 1240



**Visit the project webpage**



### Interpreter service

For languages other than English call 131 450  
Mandarin • Greek • Cantonese • Spanish • French • Arabic

获取英语以外的其他语言口译协助服务可以致电 **131 450**

Για υπηρεσίες διερμηνείας σε άλλες γλώσσες εκτός από τα Αγγλικά καλέστε το **131 450**

獲取英語以外的其他語言傳譯協助服務可以致電 **131 450**

Servicio de intérpretes para personas cuyo idioma no es el inglés, por favor, llame al número **131 450**

Pour obtenir les services d'un(e) interprète pour les langues autres que l'anglais, appelez le **131 450**

لطلب خدمة الترجمة الشفهية للغات غير الإنجليزية اتصل  
بالرقم **131 450**

[www.transport.nsw.gov.au/privacy-statement#Your\\_Privacy](https://www.transport.nsw.gov.au/privacy-statement#Your_Privacy)