

Kamay Ferry Wharves

Anzac Parade parking reconfiguration – La Perouse

May 2024



Transport for NSW acknowledges the Gweagal and Bidjigal people as the Traditional Custodians of the lands on which we work and pays respect to Elders past and present.

As part of the Kamay Ferry Wharves project, we are providing at least 13 additional parking spaces on Anzac Parade. We are carrying out this work in the cooler, quieter months, to reduce impact to the community and visitors.

What work are we doing?

- From **mid-May**, we will start relocating Telstra utilities in preparation for work to install additional parking spaces on a section of Anzac Parade, opposite Bare Island. This work will take around **two weeks** to complete.
- From **1 June**, we will start reconfiguring the existing parking spaces to create the additional parking spaces. This work will take around **three months** to complete.
- The work areas are shown on the map over the page.
- This work will take place during our normal daytime hours **7am to 6pm, Monday to Friday** and **8am to 1pm, Saturday**.

Utilities relocation (from mid-May)

- Telstra services will be relocated during this time with no disruption to local properties.
- We will fence off a strip of grassed area alongside the footpath on the north side of the road so that we can work safely.
- A variety of equipment will be used, including excavators, trucks, generators, compactors, water carts and rock hammering at times.
- Any excess soil material from this work will be stored within the work site and removed in June.
- We will periodically need to use around two parking spaces to gain access into the work

area. We will not use these spaces on Saturdays.

- The footpath will remain open.

Parking reconfiguration (from 1 June)

- We will change the parking spaces from parallel to perpendicular so that we can add additional spaces.
- To do this, the existing parking spaces and adjacent footpath will be dug up, re-asphalted and realigned with new line marking to create additional parking spaces. We will also remove some localised areas of grass and topsoil to create a new footpath behind the retaining wall.
- During this time, 13 existing parking spaces will be fenced off so that we can work safely.
- We will also need to temporarily close a section of the footpath. Traffic control signs will direct pedestrians across the road.
- A variety of equipment will be used, including excavators, trucks, generators, compactors, water carts and rock hammering at times.
- Once work is complete, we will reinstate the grass, footpath, and road areas.
- All work activities and dates are subject to weather and site conditions.

Managing our impacts

- As part of our site Remedial Action Plan, there are small fragments of bonded asbestos within our work zone that need to be safely removed.
- Asbestos hygiene and safety controls will be in place for the duration of these works as per SafeWork NSW guidelines and our site Remedial Action Plan. More information about



asbestos management can be found on our webpage.

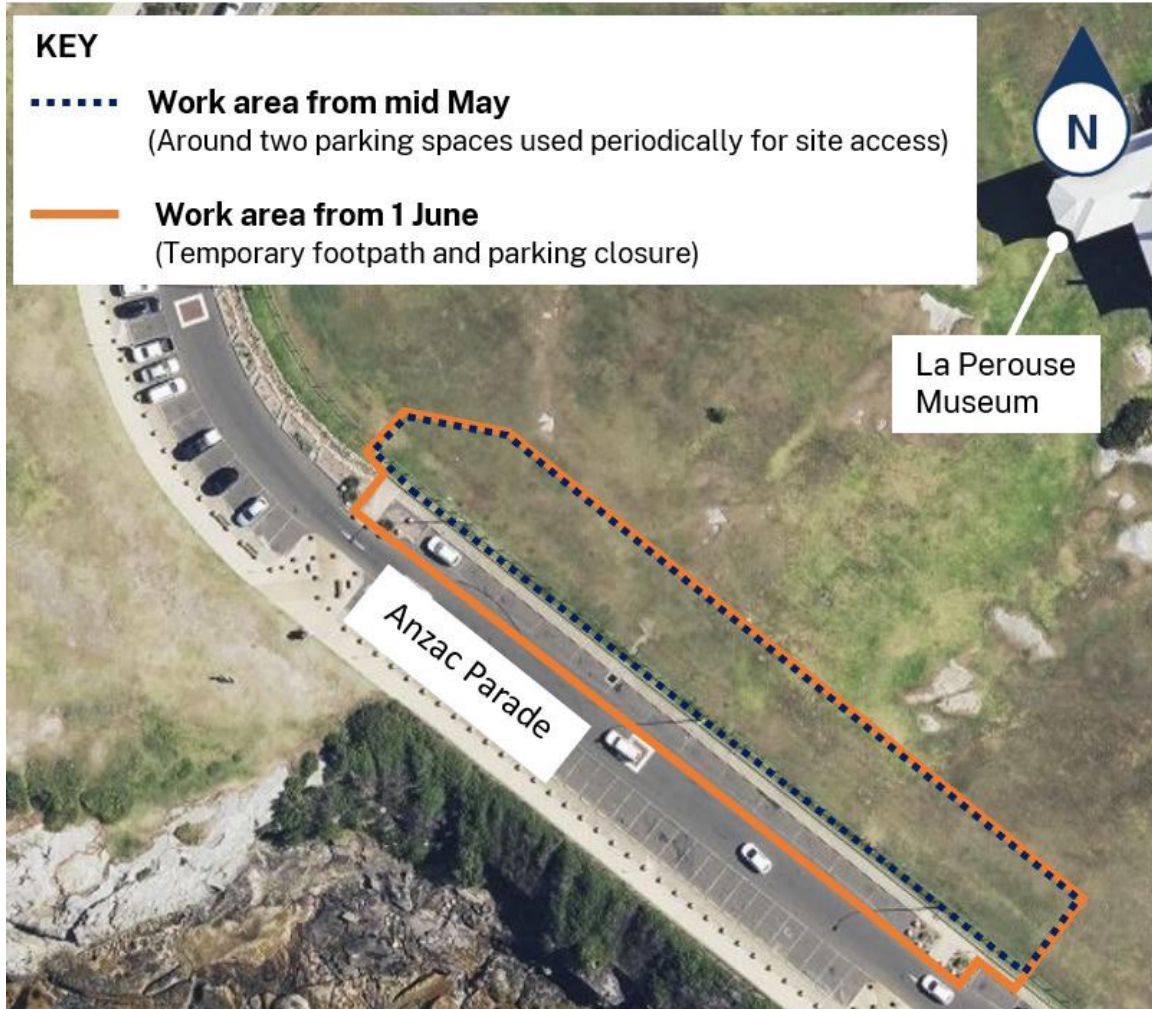
- We will carry out vibration and noise monitoring in line with the approved Noise and Vibration Management Plan.
- Traffic access will be maintained. Safety measures such as signs and traffic controls

will be in place during our work to direct pedestrians and vehicles.

Thank you

We apologise for any inconvenience this work may cause and thank you for your patience while we complete this important work.

Approximate location of work areas



Contact us



Project Infoline **1800 718 556**



kamaywharves@mcdgroup.com



nswroads.work/kamayferrywharves



Kamay Ferry Wharves Project,
Transport for NSW, Community and Place
PO Box K659, Haymarket NSW 1240



Visit the project webpage



Interpreter service

For languages other than English call 131 450
Mandarin • Greek • Cantonese • Spanish • French • Arabic

获取英语以外的其他语言口译协助服务可以致电 131 450

Για υπηρεσίες διερμηνείας σε άλλες γλώσσες εκτός από τα Αγγλικά καλέστε το **131 450**

獲取英語以外的其他語言傳譯協助服務可以致電 **131 450**

Servicio de intérpretes para personas cuyo idioma no es el inglés, por favor, llame al número **131 450**

Pour obtenir les services d'un(e) interprète pour les langues autres que l'anglais, appelez le **131 450**

لطلب خدمة الترجمة الشفهية للغات غير الإنجليزية اتصل

www.transport.nsw.gov.au/privacy-statement#Your_Privacy