

Night work along Elizabeth Drive, Badgerys Creek, The Northern Road and Luddenham Road, Luddenham

M12 Motorway – West

September 2024



Australian Government



Transport for NSW acknowledges the Dharug people as the Traditional Custodians of the lands on which we work and pays respect to Elders past and present.

The Australian and NSW governments are building the M12 Motorway to provide direct access to the Western Sydney International Airport at Badgerys Creek and connect to Sydney's motorway network.

What work are we doing?

Transport for NSW will work up to **21 nights** between **Monday 2 September** and **Monday 30 September 2024** along Elizabeth Drive, west of Badgerys Creek Road in Badgerys Creek, The Northern Road and Luddenham Road, Luddenham.

During this period, we will:

- repair, maintain, install, remove and adjust road pavement, barriers, line marking, signage and road furniture
- carry out utilities work across Elizabeth Drive with traffic control
- deliver materials to construction sites on The Northern Road, Elizabeth Drive and Luddenham Road
- continue Elizabeth Drive bridge and road alignment work
- deliver material and operation of the concrete batch plant
- undertake concrete paving work and concrete cutting
- deliver, use and remove oversized equipment when needed.

We will also continue construction on the new Elizabeth Drive road alignment during the day with traffic control in place where needed.

When and where we'll be working

Our night work hours are between **6pm** and **7am**, **Monday to Saturday morning**. Our normal work hours are between **7am** and **6pm**, **Monday to Saturdays**. There will be no work on public holidays.

What equipment will be used?

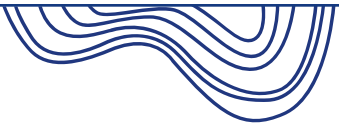
We may use lighting towers, excavators, skid steers, trucks, compactors, light and heavy vehicles, hand powered tools, a road saw, a large crawler crane, small cranes, wheeled excavators, vacuum trucks, concrete pumps, water carts, sweepers, milling machines, asphalt pavers, water blasters for line marking removal, and line marking trucks. When we work at night and on the road we will have traffic control in place.

What will this mean for you?

During night work, you may see increased activities in the area. Our work may be noisy at times, but we will do everything we can to minimise its impact, including completing noisier activities earlier in the night before **midnight**, where possible, and turning off equipment and machinery when not in use.

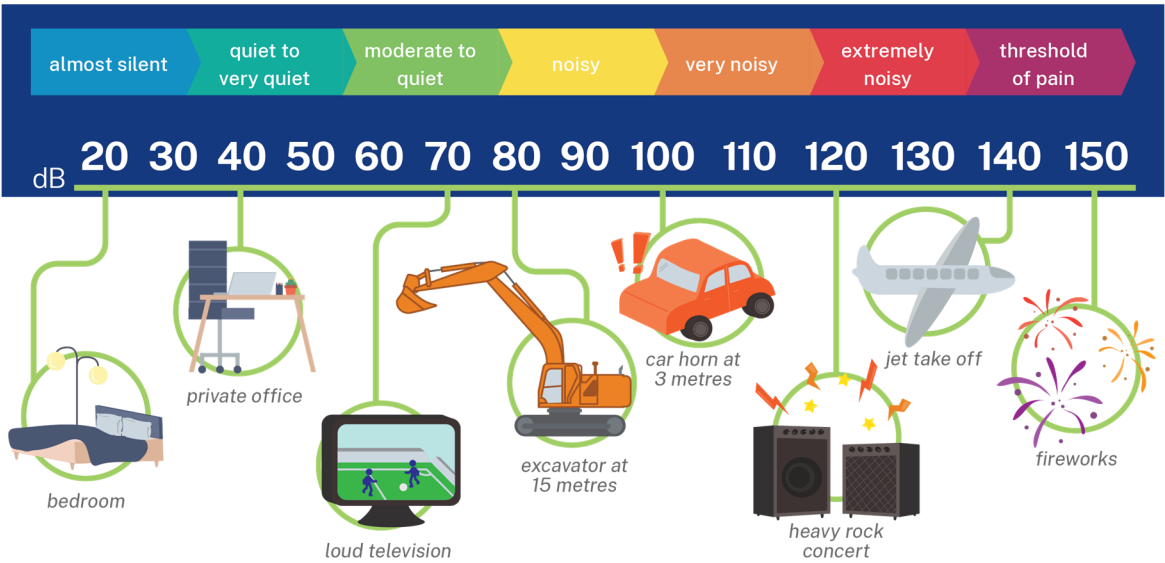
We will not perform high noise work activities more than two nights in a row and three nights in the same week at the same location.





Out-of-hours work lookahead:

OOHW Activities	Location	Work hours	Timing (2024)	Noise Impacts
Batch Plant demobilisation	Concrete Batch plant near the main site compound entrance	6pm to 7am Monday - Friday	September to November	Quiet
Earthwork	Elizabeth Drive and surrounding area	7am to 6pm Saturdays	September to October	Moderate
Finishing work	Elizabeth Drive / Airport Access Road	6pm to 7am Monday - Friday	September to November	Quiet/moderate
Traffic changes for intersection construction	Elizabeth Drive and Badgerys Creek Road intersection	6pm to 7am Monday - Friday	September to November	Noisy



Feedback:

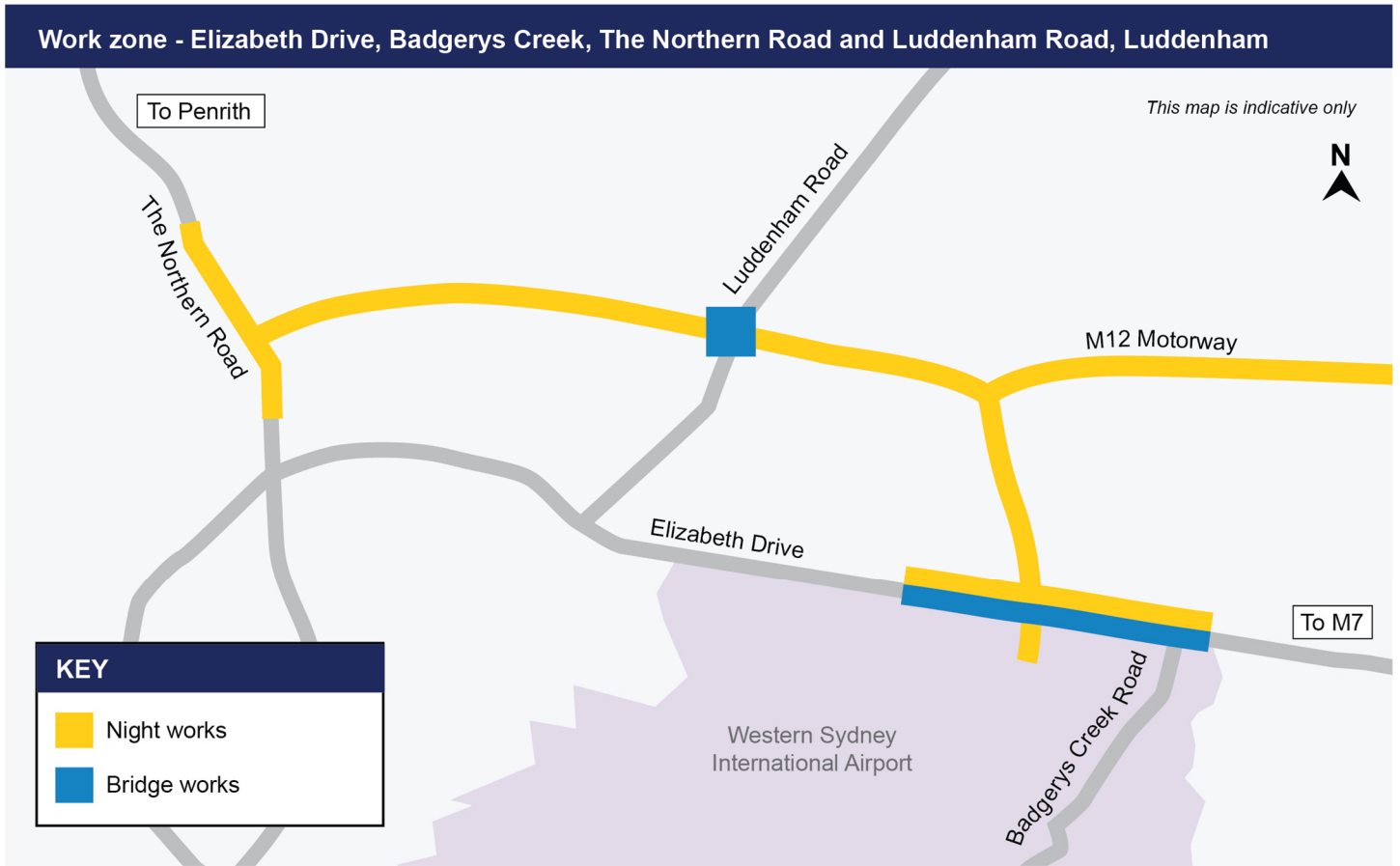
We will contact directly impacted residents regarding this work. If you have any questions or would like to provide feedback regarding this out-of-hours work, please contact **Joel** your Stakeholder and Community Relations Manager from CPBGG JV on our 24-hour Project Infoline **1800 517 155** or email **m12westinfo@cpbggjv.com.au**.

Managing our impacts:

There will be temporary traffic changes along the work zone during our work hours to ensure the work zone and traffic are safe while equipment is used, delivered and removed.

Please keep to speed limits and follow the direction of traffic controllers and signs.

Location of work area



Contact us



24-hour Project Infoline
1800 517 155



m12westinfo@cpbggjv.com.au



nswroads.work/m12



CPB Georgiou Site Compound
Off roundabout at 1953 Elizabeth Drive
Badgerys Creek NSW 2555



For the latest traffic updates:

Call 132 701, visit livetraffic.com or
download the app Live Traffic NSW



Interpreter service

For languages other than English call 131 450
Arabic • Greek • Hindi • Mandarin • Vietnamese

لطلب خدمة الترجمة الشفهية للغات غير الإنجليزية اتصل
بالرقم **131 450**

Για υπηρεσίες διερμηνείας σε άλλες γλώσσες εκτός από
τα Αγγλικά καλέστε το **131 450**

अंग्रेज़ी के अतिरिक्त अन्य भाषाओं के लिए दुभाषिया सेवा
131 450 पर कॉल करें

获取英语以外的其他语言口译协助服务可以致电**131 450**

Để có dịch vụ thông ngôn cho các ngôn ngữ khác tiếng
Anh, gọi số **131 450**

www.transport.nsw.gov.au/privacy-statement#Your_Privacy

