

Sustainability Fact Sheet

Regional Rail

March 2024

This fact sheet provides the sustainability achievements being realised as part of the Regional Rail Project.



The Mindyarra Maintenance Centre is being built as part of the Regional Rail Project to support the new Regional Rail fleet. Our commitment to sustainability makes it a demonstration piece for other infrastructure projects, for industry and the community.

Transport for NSW has worked hard to find significant sustainability initiatives that reduce environmental impacts and emissions to contribute to the NSW Government's long-term target of net-zero emissions by 2050 and maximise social and economic benefits to communities.

Our commitment to sustainability makes it a demonstration piece for other infrastructure projects, for industry and the community.

Mindyarra Maintenance Centre



Water conservation



During construction

Zero potable water used for dust suppression, saving the same amount of water that would fill more than **25 Olympic sized** swimming pools.

During operation

Water efficient infrastructure will reduce water demand by up to **4.6 megalitres annually**.

Recycling water will save up to **6.4 megalitres** of drinking water used annually.

More than **90%** of non drinking water demand will be met by the rainwater capture and reuse system, aided by a train wash system that can recycle its own used water.

Waste management



- **90%** of construction and demolition waste is targeted not to go to landfill.
- **100%** of clean spoil is targeted to be beneficially reused onsite or locally.
- **3,400** tonnes of paper, cardboard, plastics, cans, bottles, timber, concrete waste and scrap steel has been avoided from going to landfill to date.

So far, more than **500,000 tonnes** of spoil originating from the project has been beneficially reused at neighbouring facilities including Southlakes Residential Estate, Narromine Aerodrome, Fletchers International Export business and Whylandra Waste Management facility, avoiding carbon emissions equivalent to **646 round trips** from Sydney to Perth by car.



Spoil from the project being spread out at a local business in Dubbo



Trucks transporting and distributing the spoil for re-purpose

Biodiversity



100% of landscaping will be made up of native and drought tolerant species.

Black Rhino breeding program

The project has supported Taronga Western Plains Zoo wildlife initiatives, including donating Kurrajong trees to the Black Rhino breeding program. The trees provide a snack for the rhinos while also promoting dental health.



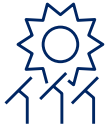
Regent Honeyeater breeding program



As part of its voluntary biodiversity offset program, the Mindyarra Maintenance Centre project is contributing **\$80,000** to help efforts to save the endangered Regent Honeyeater. Transport and CPB Contractors have contributed **\$40,000** each. It is estimated that less than **350** Regent Honeyeaters remain in the wild. As well as this support, we are also planting and rehabilitating an area of **6,500** square metres on-site at Mindyarra with Box Gum Woodland, for Regent Honeyeater habitat.

[Live link to Video and Instagram story](#)

Towards net zero



Construction



100% of construction electricity is being offset by a combination of **Green Power** and purchase of **Australian Carbon Offsets**, offsetting the annual emissions equivalent of more than **3,000 return flights** between Sydney and Melbourne.

The project is expected to achieve close to **20% reduction** in its materials related embodied carbon compared to business as usual practices.

During operation

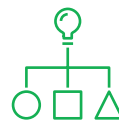


95% of annual electricity demand, equivalent to the **annual power consumption of 365 NSW homes**, will be provided by more than **3,350 rooftop solar panels at Mindyarra**.

At Mindyarra we will achieve **Net Zero** for low voltage electricity annually through the on-site renewable energy system and the purchase of carbon offsets.



The solar system has an installed capacity of **1,424kWp**. This is **178 times** the size of the average **8kWp** residential solar installation in 2023.

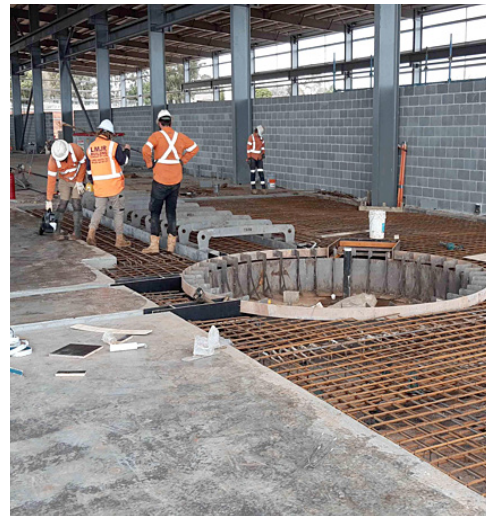


100% of construction electricity is being offset by a combination of Green Power and purchase of Australian Carbon Offsets



Climate action

- More than **9,000m³** of carbon neutral concrete used in construction, offsetting the equivalent annual emissions of 920 cars on the road.
- **Climate resilient design** to adapt to more frequent and higher intensity rainfall and rising temperatures.
- Using **25% less** Portland cement and **15% less** natural sand in concrete saves the equivalent carbon emissions of planting about **325 trees**.
- At least **60%** of reinforcing steel produced using **energy reducing technology** (Polymer Injection Technology).



Infrastructure Sustainability Council (ISC) rating

Mindyarra has been awarded an Infrastructure Sustainability Council (ISC) 'Leading' rating for design - the highest standard of sustainability in the industry.





Sustainable communities*

Workforce and Diversity

- **13%** of the project workforce **are women.**
- **10%** of the project workforce **are Aboriginal.**
- **15%** of the project workforce **are under 25 years old.**
- **29%** of trades across the supply chain **are apprentices.**

Sustainable regional employment

- **22%** of the project workforce has received further training.
- **38%** Sustainable Regional Jobs

Industry participation

- **57** local businesses have been engaged to work on the project.
- **19** Recognised Aboriginal Businesses have won contracts to work on the project.

*Data provided by Momentum Train as at December 2023

People facts

The project's pre-employment program, which prepares local people for jobs, either at the Mindyarra Maintenance Centre in Dubbo or with local businesses, has achieved an 85% completion rate with Aboriginal participants. About 200 jobs have been created during construction and there will be 50 ongoing operational jobs, providing opportunities for long term employment and skills development in regional NSW.





Regional Rail – Sustainability Fact Sheet

© March 2024 Transport for NSW.

CONTACTS

For more information about the Regional Rail project sustainability initiatives please call **1800 684 490**, or email **projects@transport.nsw.gov.au**.

transport.nsw.gov.au/projects/current-projects/regional-rail

This document contains important information about public transport projects in your area. If you require the services of an interpreter, please contact the Translating and Interpreting Service on 131 450 and ask them to call Transport Projects on (02) 9200 0200. The interpreter will then assist you with translation.