

Parkes Bypass Newell Highway upgrade

Community update

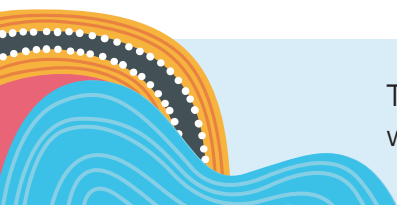
January 2024



A precast girder being lifted into position for the Bridge over Rail and Hartigan Avenue

Two years into construction and the Parkes Bypass, jointly funded by the Australian and NSW Governments, is taking shape. Once completed, this Newell Highway upgrade project will remove around 1200 trucks per day from the town centre of Parkes, improve pedestrian access and safety, as well as improve freight efficiency and provide access to the Parkes Special Activation Precinct.

Transport for NSW acknowledges the Traditional Custodians of the lands on which we work and pays respect to Elders past and present.



Bridging the gap



The project hit a major milestone in October with the first 30 precast girders being lifted into position to support the 200-metre-long bridge over rail lines and Hartigan Avenue.

Six girders were installed over the rail line on Friday 13 October, with crews working through to 10pm to get the job completed before their temporary access to the rail corridor concluded.

The 60-tonne girders were lifted into place with, a 400-tonne and a 500-tonne all-terrain crane working together to manoeuvre and safely install the girders.



The first of the girders being installed over the rail line

The remaining 24 girders were subsequently lifted into place over two weeks with the final lifted on Friday 3 November. The remaining six girders will be installed at the north of the bridge in Mid-2024.



30 rail bridge girders have been installed at the Bridge over Rail and Hartigan Avenue.



1796 metres³ of concrete has been poured for the rail bridge



A precast girder being lifted into position for the Bridge over Rail and Hartigan Avenue

R U OK? Day



R U OK? Is a charitable organisation focused on public health promotion, urging individuals to foster connections and engage in conversations that provide support during challenging periods. The Parkes Bypass site team enjoyed a BBQ lunch in September, aligning with the workplace initiative to support mental health.

R U OK? contributes to suicide prevention by advocating for people to invest more time in personal relationships and enhancing the capability of informal support networks-including friends, family, and colleagues-to be aware to signs of distress or difficulty.



The Parkes Bypass site team enjoyed a BBQ lunch for R U OK? day



Current and upcoming traffic changes



These traffic changes assist as a notice for the upcoming construction activities. For additional information, please visit the Parkes Bypass website as the dates approach. Please note that these dates may be subject to change and are a tentative schedule for upcoming works.

There will be some temporary traffic changes to ensure the work zone is safe. Please keep to the speed limits and follow the direction of traffic controllers and signs.

For the latest traffic updates, you can call **132 701**, visit **livetraffic.com** or download the **Live Traffic NSW App**

Early 2024: Northern connection Stage 2. Traffic will switch onto the western side of road, while the eastern side of the new alignment is constructed behind barriers.

Early 2024: Stage 1 of Hartigan Avenue Traffic switch. This will involve the closure of Westlime Road between Brolgan Road and Condobolin Road.

Early 2024: Bridge over Rail concrete pour will be conducted outside normal work hours.

Mid 2024: London Road traffic switch onto side-track for the construction of the bypass over existing London Road.

Mid 2024: Southern Connection stage 3. Traffic will be switched onto the eastern side of the Newell Highway while the western side of the new alignment is constructed behind barriers.

Ongoing to Mid 2024: Thomas Street between Moulden Street and Reedsdale Road, remains closed during work hours.

Ongoing until late 2024: Victoria Street will remain closed until further notice to facilitate Victoria Street Bridge construction.

Southern connection

Stage 1 of the southern connection works is now completed. This required pavement widening and the construction of temporary drainage to facilitate construction of the permanent Newell Highway alignment.

Stage 2 is currently underway and involves earthworks, drainage construction, concrete slab protection works for the gas main, and granular pavement construction which is expected to be completed by late April 2024.

Stage 3 (Starting April 2024) will involve traffic being switched onto the eastern side while the western side of the alignment is constructed behind barriers.

Northern connection

Work on the northern connection of the Bypass began in mid October 2023. We will be working in three stages, with various changed traffic conditions so that we can facilitate traffic management and safely enable road construction which includes earthworks, service installation, drainage and pavement works.

Stage 1 is currently underway and involves the installation of barriers on the existing Newell Highway to allow us to temporarily widen the western side of the road to support traffic management.

Stage 2 (starting in February 2024) will involve traffic being switched onto the western side of road, while the eastern side of the new alignment is constructed behind barriers.

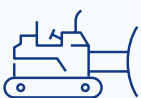
Stage 3 (starting in July 2024) will involve traffic being switched to the eastern side of road, while the western side of the new alignment is constructed behind barriers.

Traffic to switch onto New Link Road

Following the discovery of naturally occurring asbestos on site, the new link road and new Hartigan Avenue have been fully remediated. This has allowed pavement works to progress in these areas to facilitate the planned traffic switch in February 2024.



20% of stormwater drainage complete with 1.2km of concrete stormwater pipe installed to date



80% of earthworks completed with 550,000m³ (1,100,000T) of cut to fill completed to date



2000 tonnes of mulch have been produced from clearing works for reuse in landscaping works

To enable construction of the Bridge over Rail and Hartigan Avenue, traffic using Hartigan Avenue will be switched onto the New Link Road which will connect Hartigan Avenue and Brolgan Road; this will allow access to Westlime Road and Billy Mac Place.

For more information on naturally occurring asbestos on the project, please visit: nswroads.work/parkesbypass.

Hartigan Avenue Extension

Progress is being made on the final stages of the new Hartigan Avenue extension, with Stage 1 anticipated to open in early 2024. Once new Hartigan Avenue is open, a section of Westlime Road, from Brolgan Road to Condobolin Road, will close. This closure is necessary to facilitate the construction of the Bypass alignment over the current road.

Upcoming traffic changes will be communicated directly to affected stakeholders and the wider community.



48 rail bridge piles have been constructed over 6 pier locations



18,000T of road base imported from local quarries for road construction

Works commenced on Victoria Street Bridge

Victoria Street Bridge piling works have now been completed. This involved setting up 12 bored piles to provide support for the bridge's substructure. The next steps involve the commencement of the substructure. The completion and opening of the 34-metre bridge is expected in mid 2024 and will provide key access to Back Trundle Road over the bypass, including Parkes Christian School.



Girder being placed for the Victoria Street Bridge

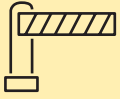


Girder being delivered for the Victoria Street Bridge

OSOM Movements



The maintenance of Oversize Overmass (OSOM) movements is a key consideration for traffic staging on the Parkes Bypass project. OSOM movements, including loads wider than 3.5m, are currently required to utilise Thomas Street as part of the OSOM network for movements north and south along the Newell Highway.



Road closures require certain vehicle types to co-ordinate with traffic controllers for access

The Thomas Street Road closure requires these vehicle types to co-ordinate with traffic controllers for access through the area. OSOM and vehicles wider than 3.5m are required to park in designated waiting areas on Moulden Street or Thomas Street and contact Traffic Control on the nominated UHF channel to arrange opening of the road closure to continue along the designated route.

There are up to ten OSOM movements a week and we thank the drivers for their cooperation.



A heavy vehicle makes an OSOM movement on Thomas Street

Supporting the local community

Over half of the Parkes Bypass project team are locally employed staff. The procurement of local businesses provides a wide range of essential supplies, with things like concrete and quarry products, electrical and plumbing services, truck, plant, and equipment rental, lodging, catering, cleaning, traffic control, and safety equipment.

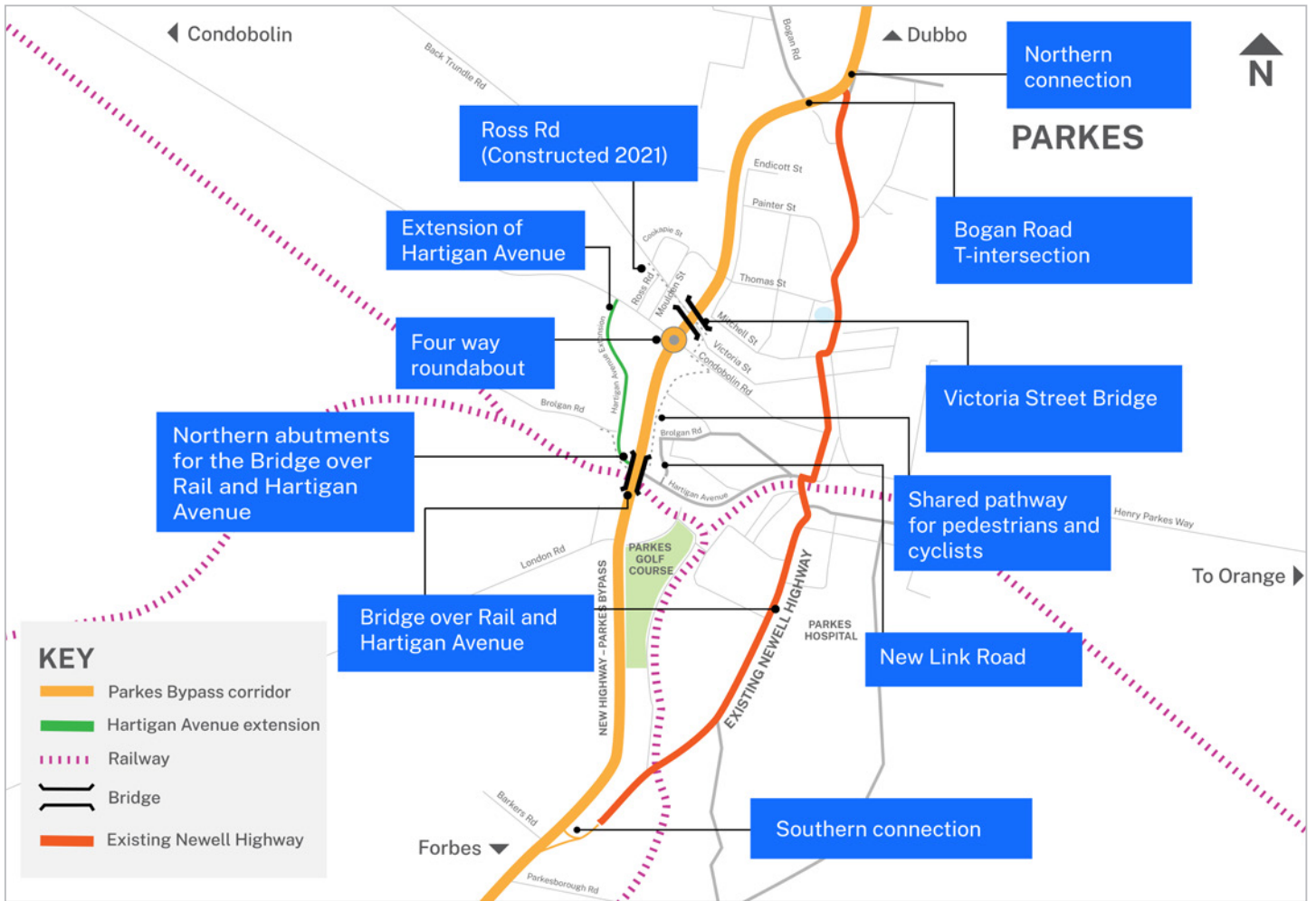
It's not just about completing the project; it's about investing in the people who call Parkes home. Our staff are being equipped with new skills, ensuring that the benefits of this project extend far beyond its completion.

Taylah Jones the Community Liaison Officer for Georgiou comments, 'Working on this great project in my hometown is more than just a job — it's a chance to contribute to something transformative while staying close to my roots. Being able to share this experience with my family and community adds a unique layer of pride and fulfillment.'



Thanks to all the local businesses and the Parkes community for supporting this important project

Key Project Features Map



Map showing the key features of the Parkes Bypass

Contact us



Project Infoline
1800 741 636 (option 4)



parkes.community@georgiou.com.au



nswroads.work/parkesbypass



For the latest traffic updates:
Call 132 701, visit live.traffic.com or
download the app Live Traffic NSW



Interpreter service

For languages other than English call **131 450**
Arabic • Greek • Hindi • Mandarin • Vietnamese

طلب خدمة الترجمة الشفهية للغات غير الإنجليزية اتصل
بالرقم **131 450**

Για υπηρεσίες διερμηνείας σε άλλες γλώσσες εκτός από
τα Αγγλικά καλέστε το **131 450**

अंग्रेज़ी के अतिरिक्त अन्य भाषाओं के लिए दुभाषिया सेवा
131 450 पर कॉल करें

获取英语以外的其他语言口译协助服务可以致电**131 450**

Để có dịch vụ thông ngôn cho các ngôn ngữ khác
tiếng Anh, gọi số **131 450**