

# Night work detour at Jesmond roundabout from Tuesday 20 August

## Newcastle Inner City Bypass – Rankin Park to Jesmond

August 2024



Transport for NSW acknowledges the Awabakal people of the Awabakal Nation as the Traditional Custodians of the lands on which we work and pays respect to Elders past and present.

### The Australian and NSW governments are funding the Rankin Park to Jesmond section of the Newcastle Inner City Bypass.

Work is continuing on the 3.4 kilometre section of the bypass. Transport for NSW has engaged Fulton Hogan to finalise the design and construct this section of the bypass.

### What work are we doing?

As part of construction of the Newcastle Inner City Bypass, the project team will be installing culverts to connect to the existing Dark Creek culverts in Jesmond.

### When and where we'll be working

Works to complete the installation of Dark Creek culverts has been progressing throughout the project. Night culvert installation works will start in August and will be carried out between **Sunday to Thursday between 6pm and 7am**.

The new culverts will connect Dark Creek on the north west side of the Jesmond roundabout through to Jesmond Park under Newcastle Road.

### What will this mean for you?

As part of the culvert installation, we will need to close the northbound lane for **three nights** from **Tuesday 20 August**, weather permitting.

Detours of up to 2.5 kilometres will be in place during this time, motorists travelling north from

the Jesmond roundabout will detour further west to u-turn at the Thomas Street roundabout, Wallsend.

The detour may add up to 10 minutes to your journey. We have included a map to show the detour.

Access will be maintained for all other directions at Jesmond roundabout during the work.

### Managing our impacts

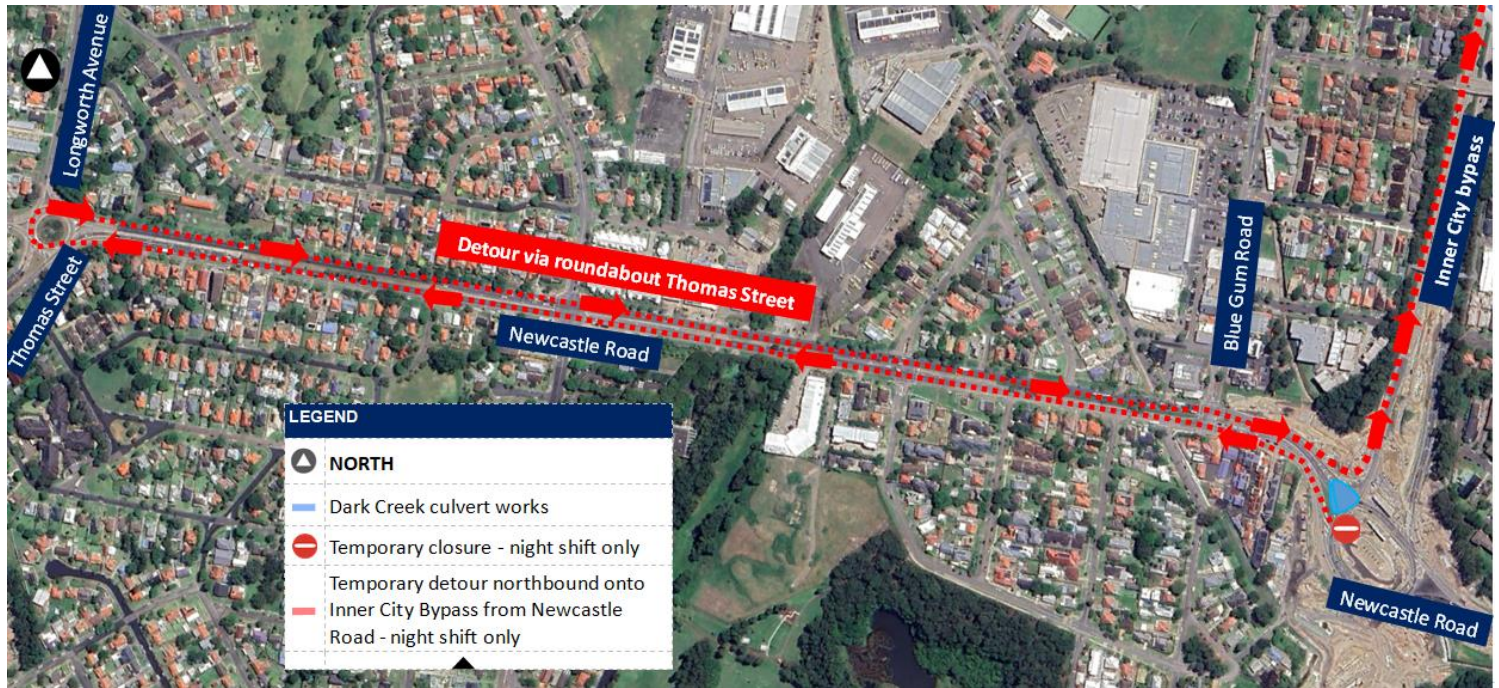
There will be machinery and other plant and equipment working in different areas throughout the night work. The machinery and equipment generate light, noise, and vibration. We will make every effort to minimise these impacts by:

- Turning off machinery and vehicles when not in use
- Using non-tonal reversing alarms
- Positioning of machines and directing temporary lighting down and away from homes
- Planning activities close to residents within standard construction hours and scheduling noisy activities earlier in the night, where possible
- Monitoring noise to manage any potential impacts and adjusting our work, where possible.

Noise levels will be moderate. Directly affected residents will be contacted and advised of the likely impact and what we are doing to minimise disruption during the work.



## Location of work area



This is an artist impression only and is not to scale.



For more information about the project visit [nswroads.work/rp2j](https://nswroads.work/rp2j).

Thank you for your patience during this important work. Scan the QR code to visit our interactive portal and learn more about the project.

## Contact us



If you would like to provide feedback, or have any questions or complaints, please contact our 24-hour Construction Response Line  
**1800 818 433**



[RP2JCommunity@fultonhogan.com.au](mailto:RP2JCommunity@fultonhogan.com.au)



[nswroads.work/rp2j](https://nswroads.work/rp2j)



**For the latest traffic updates:**

Call 132 701, visit [livetraffic.com](https://livetraffic.com) or download the app Live Traffic NSW



Scan the QR code to visit the online portal



### Interpreter service

For languages other than English call 131 450  
Arabic • Greek • Hindi • Mandarin • Vietnamese

لطلب خدمة الترجمة الشفهية للغات غير الإنجليزية اتصل  
بالرقم **131 450**

Για υπηρεσίες διερμηνείας σε άλλες γλώσσες εκτός από τα Αγγλικά καλέστε το **131 450**

अंग्रेज़ी के अतिरिक्त अन्य भाषाओं के लिए दुभाषिया सेवा  
**131 450** पर कॉल करें

获取英语以外的其他语言口译协助服务可以致电**131 450**

Để có dịch vụ thông ngôn cho các ngôn ngữ khác tiếng Anh, gọi số **131 450**

[www.transport.nsw.gov.au/privacy-statement#Your\\_Privacy](https://www.transport.nsw.gov.au/privacy-statement#Your_Privacy)

