

Night work detour at Jesmond roundabout from Sunday 8 September

Newcastle Inner City Bypass – Rankin Park to Jesmond

September 2024



Transport for NSW acknowledges the Awabakal people of the Awabakal Nation as the Traditional Custodians of the lands on which we work and pays respect to Elders past and present.

The Australian and NSW governments are funding the Rankin Park to Jesmond section of the Newcastle Inner City Bypass.

Work is continuing on the 3.4 kilometre section of the bypass. Transport for NSW has engaged Fulton Hogan to finalise the design and construct this section of the bypass.

What work are we doing?

As part of construction of the Newcastle Inner City Bypass, the project team has been installing new drainage pipes under the roads around the Jesmond roundabout.

When and where we'll be working

Works to complete the installation of drainage pipes across the northbound lanes of the Jesmond roundabout. For the safety of our staff and road users, night drainage installation works is required for **one night**. Night works are from **Sunday to Thursday between 6pm and 7am**.

The new drainage pipes will connect to drainage already installed on Newcastle Road.

What will this mean for you?

As part of the drainage installation, we will need to close the northbound lane for **one night** from **Sunday 8 September**, weather permitting.

Detours of up to 2.5 kilometres will be in place during this time, motorists travelling north from the Jesmond roundabout will detour further west to u-turn at the Thomas Street roundabout, Wallsend.

The detour may add up to 10 minutes to your journey. We have included a map to show the detour.

Access will be maintained for all other directions at Jesmond roundabout during the work.

Managing our impacts

There will be machinery and other plant and equipment working in different areas throughout the night work. The machinery and equipment generate light, noise, and vibration. We will make every effort to minimise these impacts by:

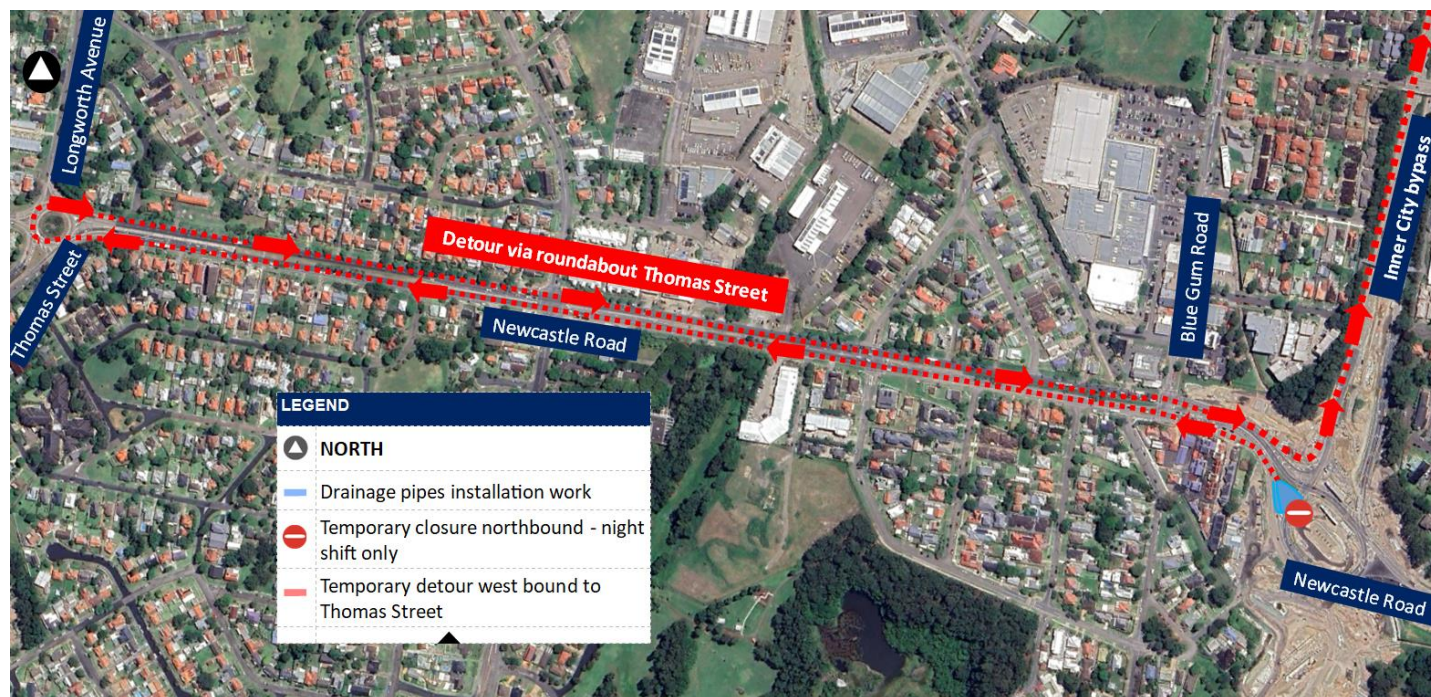
- Turning off machinery and vehicles when not in use
- Using non-tonal reversing alarms
- Positioning of machines and directing temporary lighting down and away from homes
- Planning activities close to residents within standard construction hours and scheduling noisy activities earlier in the night, where possible
- Monitoring noise to manage any potential impacts and adjusting our work, where possible.



Noise levels will be moderate. Directly affected residents will be contacted and advised of the

likely impact and what we are doing to minimise disruption during the work.

Location of work area



This is an artist impression only and is not to scale.



For more information about the project visit nswroads.work/rp2j. Thank you for your patience during this important work. Scan the QR code to visit our interactive portal and learn more about the project.

Contact us



If you would like to provide feedback, or have any questions or complaints, please contact our 24-hour Construction Response Line
1800 818 433



RP2JCommunity@fultonhogan.com.au



nswroads.work/rp2j



For the latest traffic updates:

Call 132 701, visit [livetraffic.com](https://www.livetraffic.com) or download the app Live Traffic NSW



Scan the QR code to visit the online portal



Interpreter service

For languages other than English call 131 450
Arabic • Greek • Hindi • Mandarin • Vietnamese

لطلب خدمة الترجمة الشفهية للغات غير الإنجليزية اتصل
بالرقم **131 450**

Για υπηρεσίες διερμηνείας σε άλλες γλώσσες εκτός από τα Αγγλικά καλέστε το **131 450**

अंग्रेज़ी के अतिरिक्त अन्य भाषाओं के लिए दुभाषिया सेवा
131 450 पर कॉल करें

获取英语以外的其他语言口译协助服务可以致电**131 450**

Để có dịch vụ thông ngôn cho các ngôn ngữ khác tiếng Anh, gọi số **131 450**

www.transport.nsw.gov.au/privacy-statement#Your_Privacy