



# Road Toll Update for NSW

up to and including

Monday, 22 April 2024

Fatalities advised since last update issued: 1

Fatalities excluded since last update issued: 1

CALENDAR YEAR TO MIDNIGHT 22 April						12-MONTH PERIOD ENDING 22 April					
	2024 (Prelim)	2023 (Prelim)	DIFF.	3-YEAR AVERAGE	DIFF.	2024 (Prelim)	2023 (Prelim)	DIFF	3-YEAR AVERAGE	DIFF.	
<b>Fatal crashes</b>	<b>101</b>	<b>86</b>	<b>15</b>	<b>88</b>	<b>13</b>	<b>329</b>	<b>255</b>	<b>74</b>	<b>263</b>	<b>66</b>	
<b>Fatalities</b>											
Driver	58	51	7	49	9	181	127	54	136	45	
Passenger	18	19	-1	15	3	68	47	21	40	28	
Motorcyclist	19	14	5	19	0	58	44	14	55	3	
Pedestrian	15	13	2	12	3	49	53	-4	43	6	
Pedal cyclist	1	3	-2	3	-2	6	9	-3	8	-2	
Other	0	0	0	0	0	0	0	0	0	0	
<b>Total Killed</b>	<b>111</b>	<b>100</b>	<b>11</b>	<b>98</b>	<b>13</b>	<b>362</b>	<b>280</b>	<b>82</b>	<b>282</b>	<b>80</b>	

\* Motorcyclist and pedal cyclist includes passengers

<b>PRELIMINARY 2023 TOTALS:</b>	<b>Fatal crashes 314</b>	<b>Fatalities 351</b>
---------------------------------	--------------------------	-----------------------

Preliminary Data - Note: Fatalities will be removed from statistics if subsequent Police or Coronial investigation shows that they did not fall within National reporting guidelines. Fatalities will be added from a crash occurring prior to today's date where a person subsequently dies within 30 days or the crash is reported late. Typically, these variations may result in a statewide annual decrease of up to 12 fatalities from the initial preliminary figure. Fatalities are deaths which occurred within 30 days of a crash as a result of injuries received in the crash. The crash must have occurred within the surveyed road reserve.



# Road Toll Update for NSW

up to and including

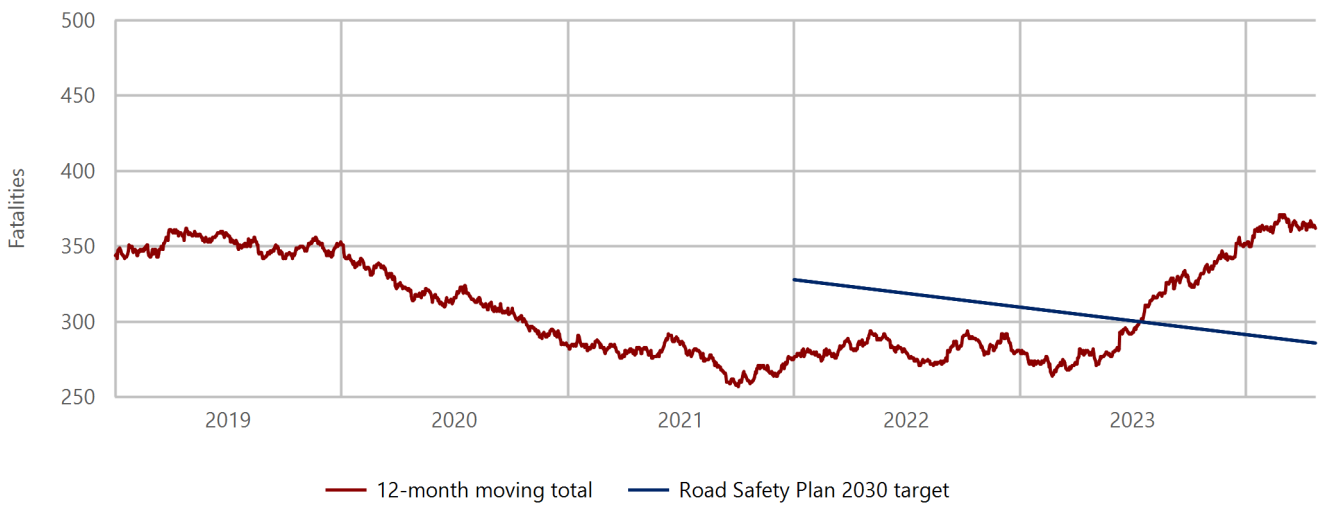
Monday, 22 April 2024

## NSW Road Toll Statistics: Up to and including 22 April 2024

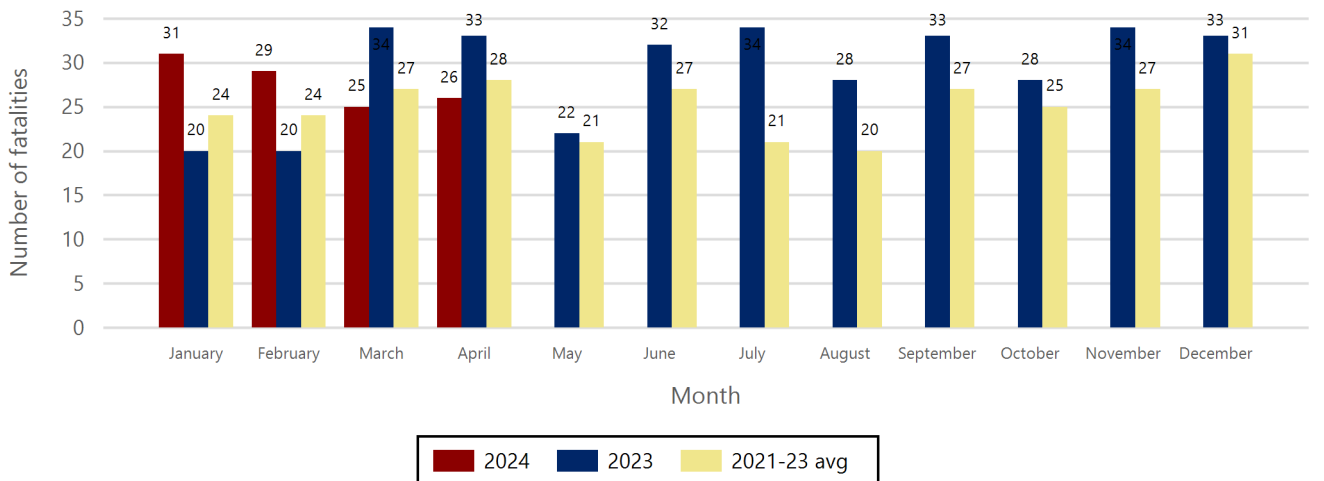
	2024	2023	+/-	% change
April to date	26	26	0	0.0
Calendar year to date	111	100	11	11.0
12-month period to date	362	280	82	29.3

NSW 50% Reduction Target : 286 , currently 76 over target

### Fatalities 12-month moving total - 2019 to date



### Road fatality comparative statistics by month for 2023, 2024 and the average for the 3-year period 2021-2023



	2024	2023
Data completeness status	(Prelim)	(Prelim)

Preliminary Data - Note: Fatalities will be removed from statistics if subsequent Police or Coronial investigation shows that they did not fall within National reporting guidelines. Fatalities will be added from a crash occurring prior to today's date where a person subsequently dies within 30 days or the crash is reported late. Typically, these variations may result in a statewide annual decrease of up to 12 fatalities from the initial preliminary figure. Fatalities are deaths which occurred within 30 days of a crash as a result of injuries received in the crash. The crash must have occurred within the surveyed road reserve.

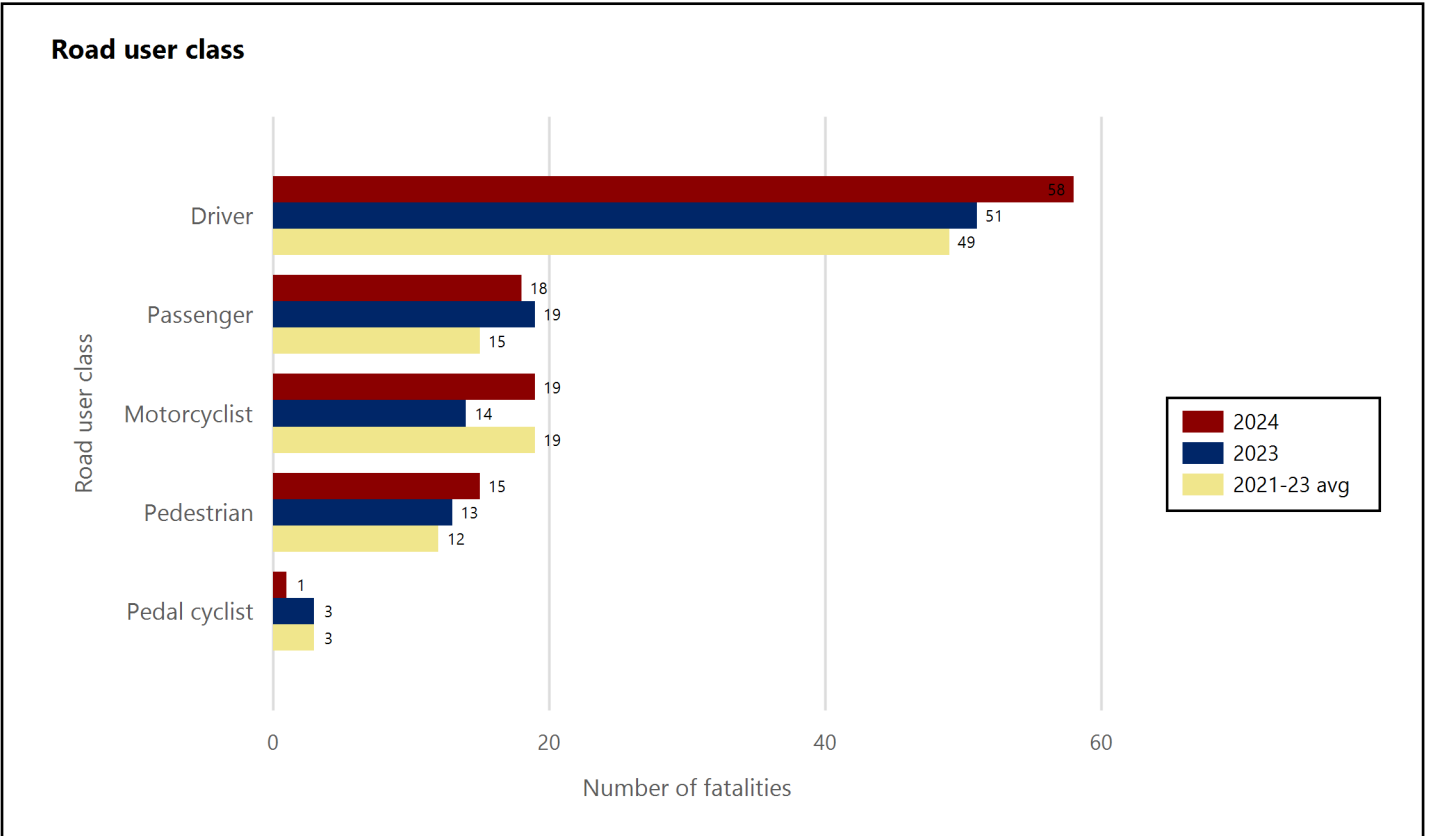


# Road Toll Update for NSW

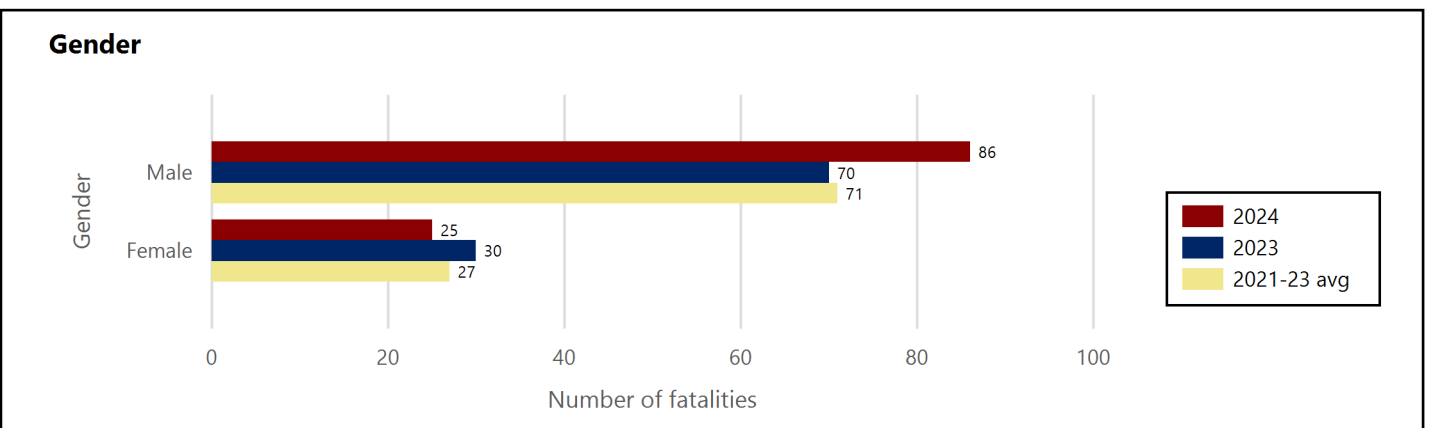
up to and including

Monday, 22 April 2024

Road fatality comparative statistics for the period 01 January to 22 April 2023, 2024 and the average for the same period in 2021, 2022 and 2023



Motorcyclist & pedal cyclist includes passenger



Excludes unknown gender

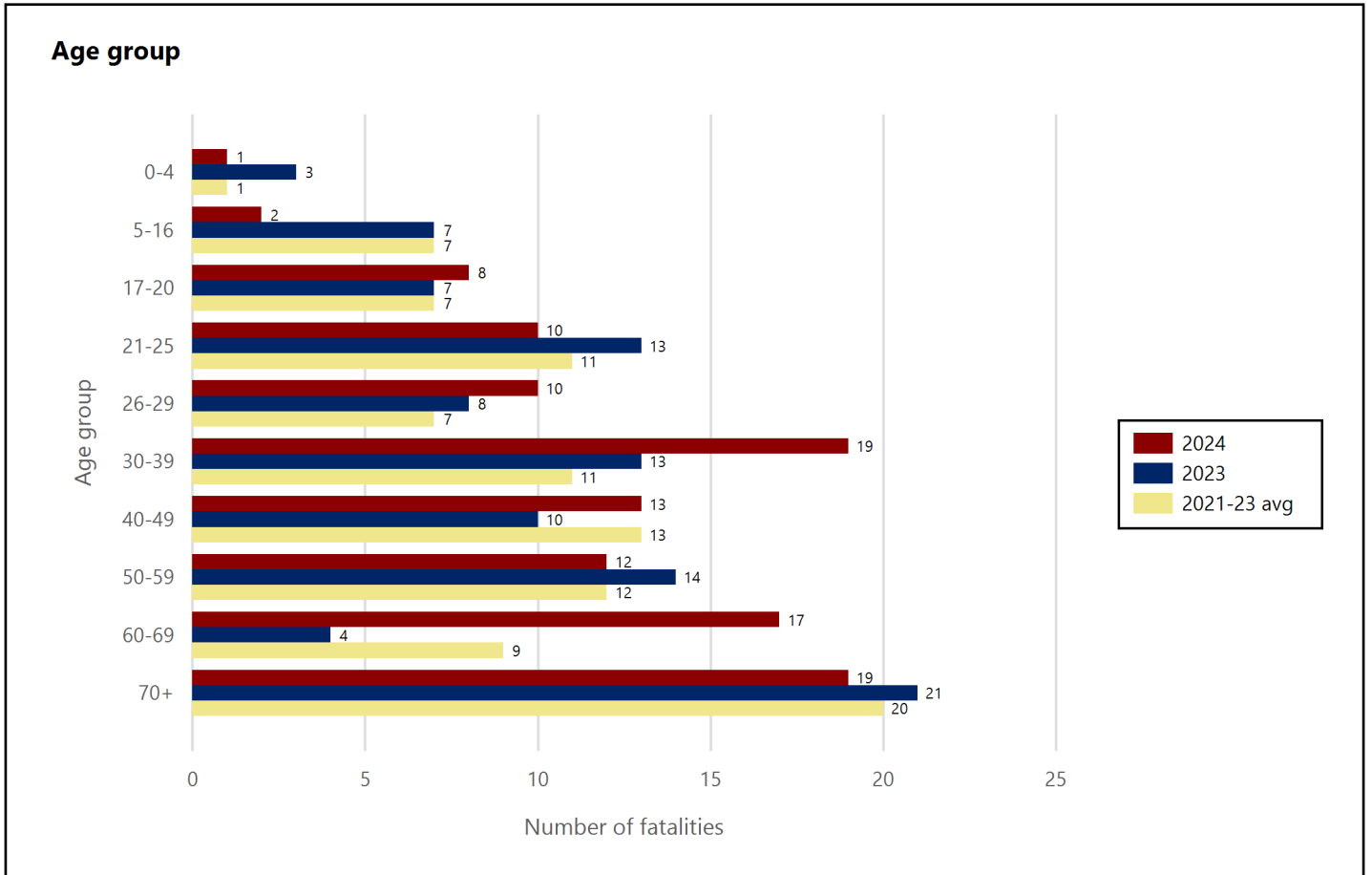


# Road Toll Update for NSW

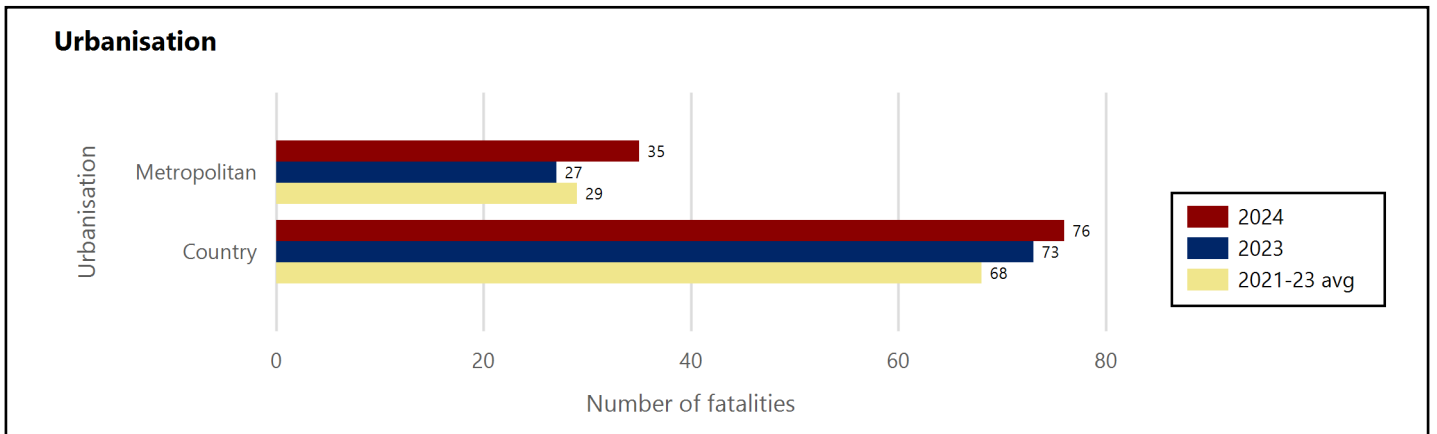
up to and including

Monday, 22 April 2024

Road fatality comparative statistics for the period 01 January to 22 April 2023, 2024 and the average for the same period in 2021, 2022 and 2023



Excludes unknown age



\* Fatality data are preliminary and subject to change



# Road Toll Update for NSW

up to and including

Monday, 22 April 2024

## Road fatality comparative statistics for the period 01 January to 22 April 2023, 2024 and the average for the same period in 2021, 2022 and 2023

Road user class	2024	2023	+/-	% change	3-year average
Driver	58	51	7	13.7	49
Passenger	18	19	-1	-5.3	15
Motorcyclist	19	14	5	35.7	19
Pedestrian	15	13	2	15.4	12
Pedal cyclist	1	3	-2	-66.7	3

Motorcyclist & pedal cyclist includes passenger

Gender	2024	2023	+/-	% change	3-year average
Male	86	70	16	22.9	71
Female	25	30	-5	-16.7	27

Excludes unknown gender

Age group	2024	2023	+/-	% change	3-year average
0-4	1	3	-2	-66.7	1
5-16	2	7	-5	-71.4	7
17-20	8	7	1	14.3	7
21-25	10	13	-3	-23.1	11
26-29	10	8	2	25.0	7
30-39	19	13	6	46.2	11
40-49	13	10	3	30.0	13
50-59	12	14	-2	-14.3	12
60-69	17	4	13	325.0	9
70+	19	21	-2	-9.5	20

Excludes unknown age

Urbanisation	2024	2023	+/-	% change	3-year average
Metropolitan	35	27	8	29.6	29
Country	76	73	3	4.1	68

\* Fatality data are preliminary and subject to change