



Road Toll Update for NSW

up to and including

Thursday, 25 April 2024

Fatalities advised since last update issued: 3

Fatalities excluded since last update issued: 0

CALENDAR YEAR TO MIDNIGHT 25 April						12-MONTH PERIOD ENDING 25 April					
	2024 (Prelim)	2023 (Prelim)	DIFF.	3-YEAR AVERAGE	DIFF.	2024 (Prelim)	2023 (Prelim)	DIFF.	3-YEAR AVERAGE	DIFF.	
Fatal crashes	103	88	15	90	13	329	254	75	263	66	
Fatalities											
Driver	59	52	7	49	10	181	127	54	136	45	
Passenger	18	19	-1	15	3	68	47	21	39	29	
Motorcyclist	21	15	6	20	1	59	45	14	56	3	
Pedestrian	15	13	2	13	2	49	52	-3	43	6	
Pedal cyclist	1	3	-2	3	-2	6	8	-2	8	-2	
Other	0	0	0	0	0	0	0	0	0	0	
Total Killed	114	102	12	100	14	363	279	84	282	81	

* Motorcyclist and pedal cyclist includes passengers

PRELIMINARY 2023 TOTALS:	Fatal crashes 314	Fatalities 351
---------------------------------	--------------------------	-----------------------

Preliminary Data - Note: Fatalities will be removed from statistics if subsequent Police or Coronial investigation shows that they did not fall within National reporting guidelines. Fatalities will be added from a crash occurring prior to today's date where a person subsequently dies within 30 days or the crash is reported late. Typically, these variations may result in a statewide annual decrease of up to 12 fatalities from the initial preliminary figure. Fatalities are deaths which occurred within 30 days of a crash as a result of injuries received in the crash. The crash must have occurred within the surveyed road reserve.



Road Toll Update for NSW

up to and including

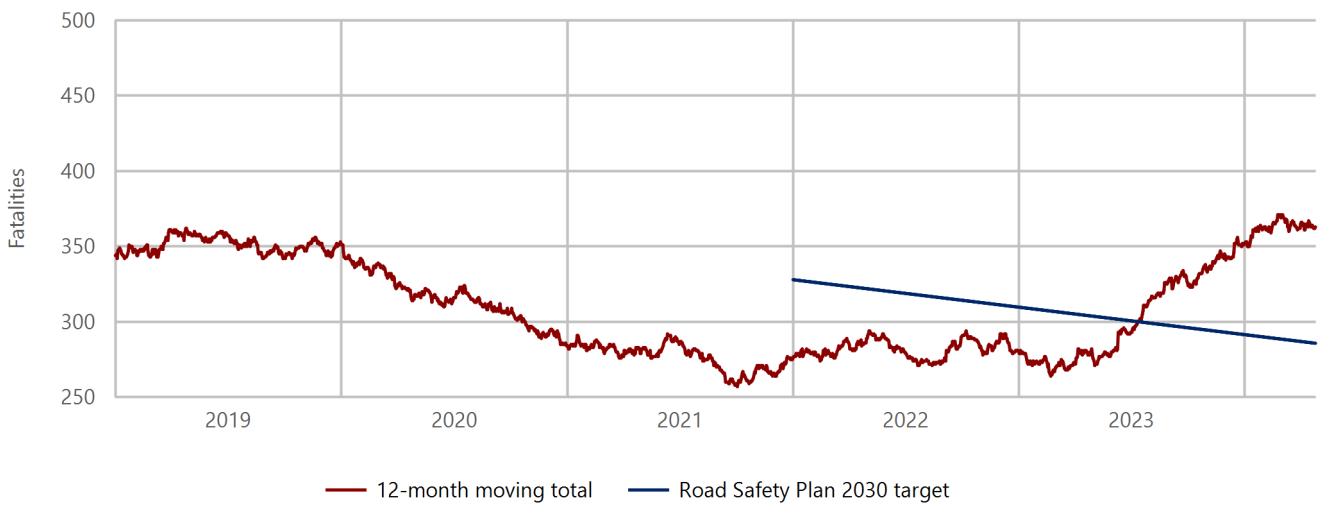
Thursday, 25 April 2024

NSW Road Toll Statistics: Up to and including 25 April 2024

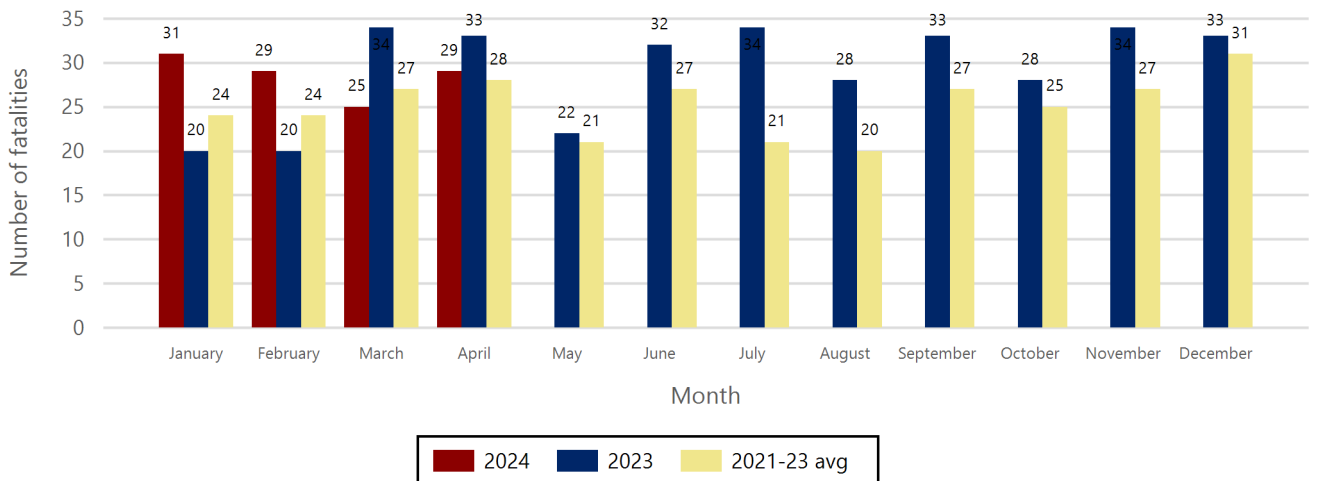
	2024	2023	+/-	% change
April to date	29	28	1	3.6
Calendar year to date	114	102	12	11.8
12-month period to date	363	279	84	30.1

NSW 50% Reduction Target : 286 , currently 77 over target

Fatalities 12-month moving total - 2019 to date



Road fatality comparative statistics by month for 2023, 2024 and the average for the 3-year period 2021-2023



	2024	2023
Data completeness status	(Prelim)	(Prelim)

Preliminary Data - Note: Fatalities will be removed from statistics if subsequent Police or Coronial investigation shows that they did not fall within National reporting guidelines. Fatalities will be added from a crash occurring prior to today's date where a person subsequently dies within 30 days or the crash is reported late. Typically, these variations may result in a statewide annual decrease of up to 12 fatalities from the initial preliminary figure. Fatalities are deaths which occurred within 30 days of a crash as a result of injuries received in the crash. The crash must have occurred within the surveyed road reserve.

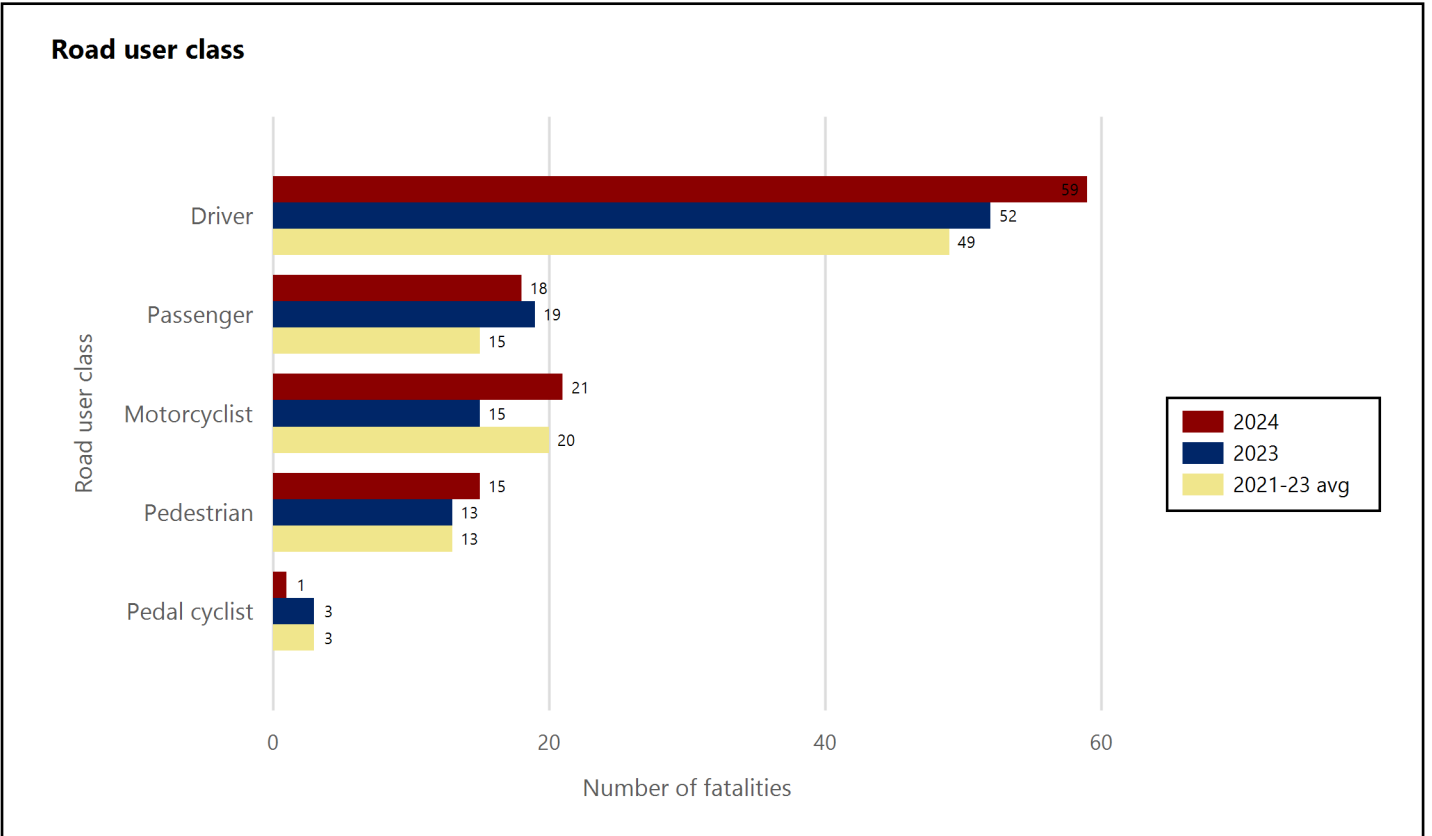


Road Toll Update for NSW

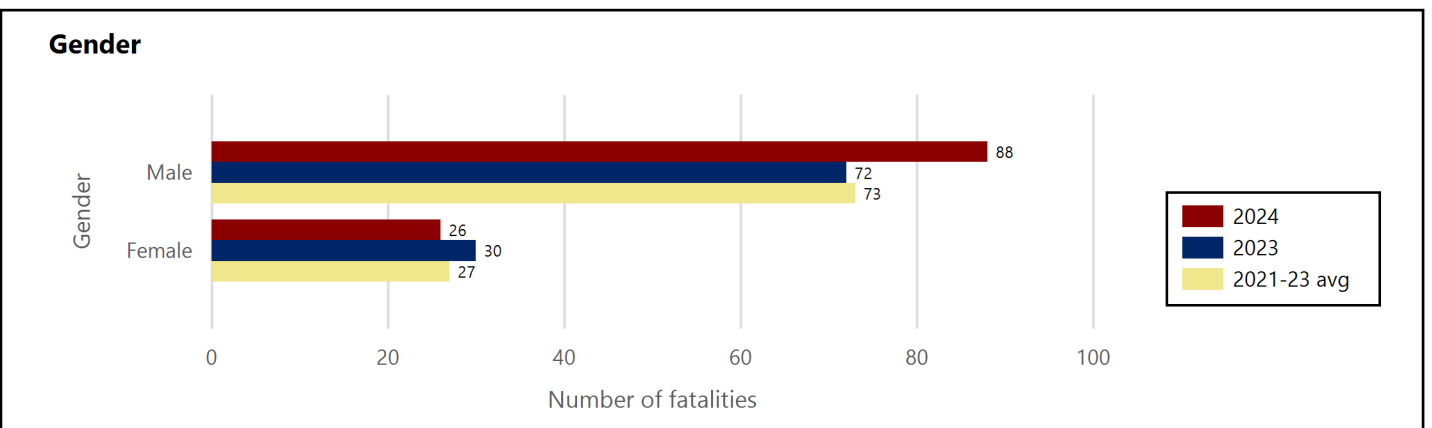
up to and including

Thursday, 25 April 2024

Road fatality comparative statistics for the period 01 January to 25 April 2023, 2024 and the average for the same period in 2021, 2022 and 2023



Motorcyclist & pedal cyclist includes passenger



Excludes unknown gender

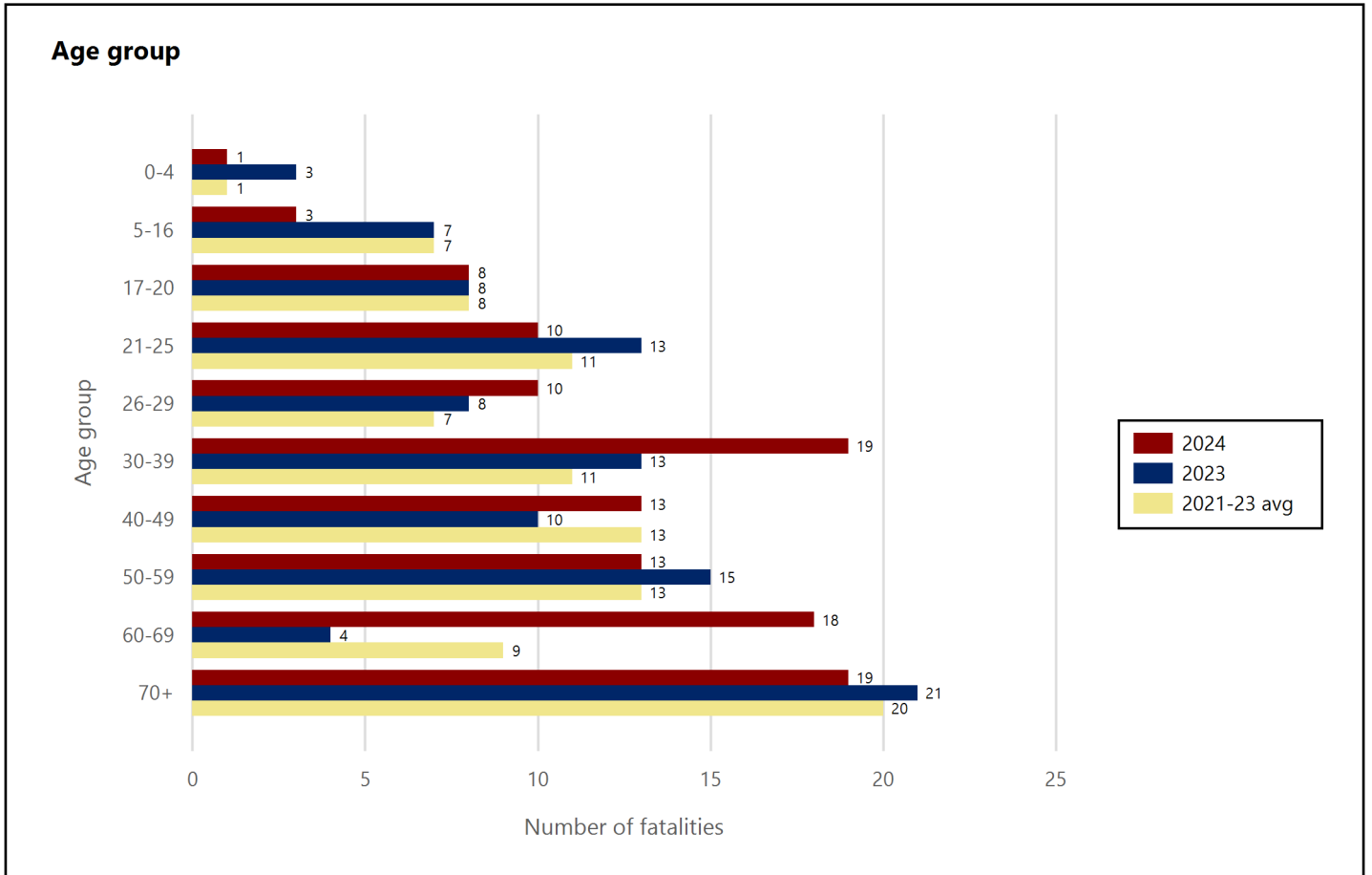


Road Toll Update for NSW

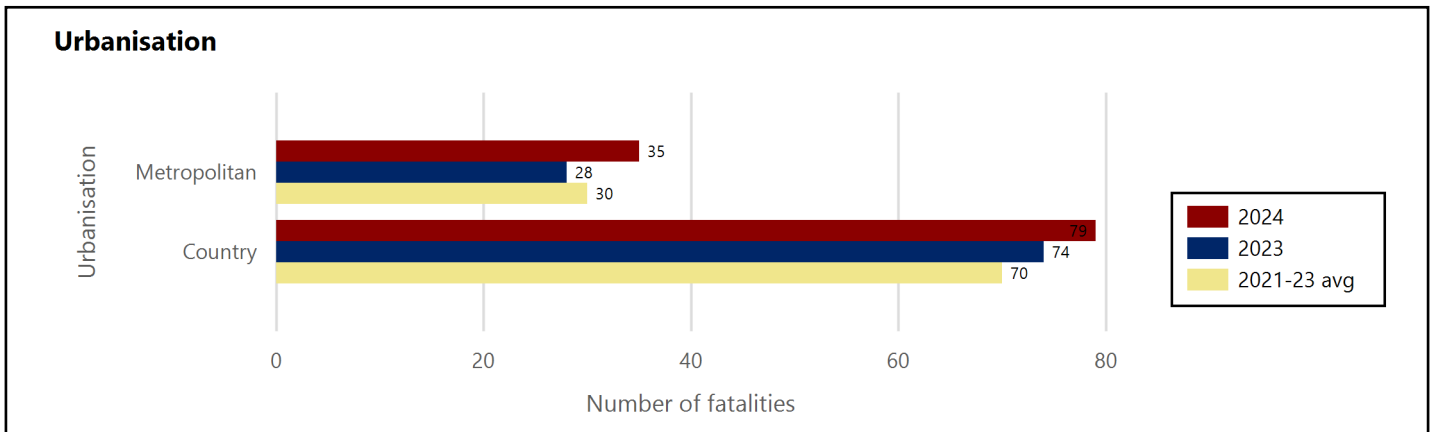
up to and including

Thursday, 25 April 2024

Road fatality comparative statistics for the period 01 January to 25 April 2023, 2024 and the average for the same period in 2021, 2022 and 2023



Excludes unknown age



* Fatality data are preliminary and subject to change



Road Toll Update for NSW

up to and including

Thursday, 25 April 2024

Road fatality comparative statistics for the period 01 January to 25 April 2023, 2024 and the average for the same period in 2021, 2022 and 2023

Road user class	2024	2023	+/-	% change	3-year average
Driver	59	52	7	13.5	49
Passenger	18	19	-1	-5.3	15
Motorcyclist	21	15	6	40.0	20
Pedestrian	15	13	2	15.4	13
Pedal cyclist	1	3	-2	-66.7	3

Motorcyclist & pedal cyclist includes passenger

Gender	2024	2023	+/-	% change	3-year average
Male	88	72	16	22.2	73
Female	26	30	-4	-13.3	27

Excludes unknown gender

Age group	2024	2023	+/-	% change	3-year average
0-4	1	3	-2	-66.7	1
5-16	3	7	-4	-57.1	7
17-20	8	8	0	0.0	8
21-25	10	13	-3	-23.1	11
26-29	10	8	2	25.0	7
30-39	19	13	6	46.2	11
40-49	13	10	3	30.0	13
50-59	13	15	-2	-13.3	13
60-69	18	4	14	350.0	9
70+	19	21	-2	-9.5	20

Excludes unknown age

Urbanisation	2024	2023	+/-	% change	3-year average
Metropolitan	35	28	7	25.0	30
Country	79	74	5	6.8	70

* Fatality data are preliminary and subject to change