



Road Toll Update for NSW

up to and including

Tuesday, 07 May 2024

Fatalities advised since last update issued: 1

Fatalities excluded since last update issued: 0

CALENDAR YEAR TO MIDNIGHT 07 May						12-MONTH PERIOD ENDING 07 May					
	2024 (Prelim)	2023 (Prelim)	DIFF.	3-YEAR AVERAGE	DIFF.	2024 (Prelim)	2023 (Prelim)	DIFF	3-YEAR AVERAGE	DIFF.	
Fatal crashes	112	95	17	100	12	332	247	85	263	69	
Fatalities											
Driver	65	56	9	54	11	183	124	59	137	46	
Passenger	19	19	0	16	3	69	46	23	39	30	
Motorcyclist	21	15	6	20	1	59	44	15	55	4	
Pedestrian	17	16	1	16	1	49	50	-1	43	6	
Pedal cyclist	2	3	-1	3	-1	7	8	-1	8	-1	
Other	0	0	0	0	0	0	0	0	0	0	
Total Killed	124	109	15	109	15	367	272	95	282	85	

* Motorcyclist and pedal cyclist includes passengers

PRELIMINARY 2023 TOTALS:	Fatal crashes 315	Fatalities 352
---------------------------------	--------------------------	-----------------------

Preliminary Data - Note: Fatalities will be removed from statistics if subsequent Police or Coronial investigation shows that they did not fall within National reporting guidelines. Fatalities will be added from a crash occurring prior to today's date where a person subsequently dies within 30 days or the crash is reported late. Typically, these variations may result in a statewide annual decrease of up to 12 fatalities from the initial preliminary figure. Fatalities are deaths which occurred within 30 days of a crash as a result of injuries received in the crash. The crash must have occurred within the surveyed road reserve.



Road Toll Update for NSW

up to and including

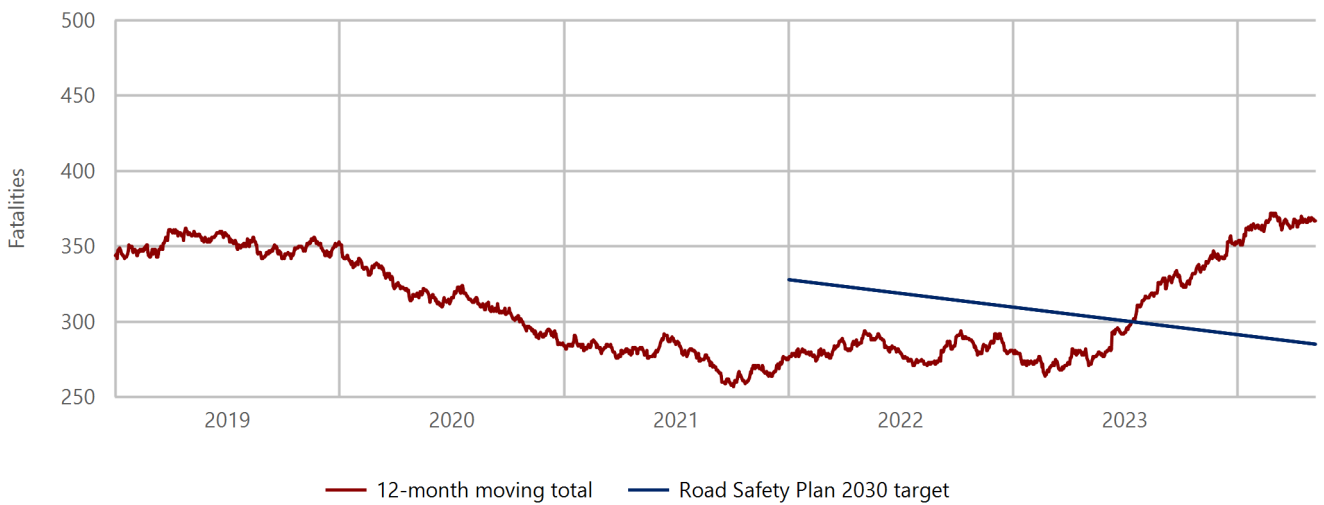
Tuesday, 07 May 2024

NSW Road Toll Statistics: Up to and including 07 May 2024

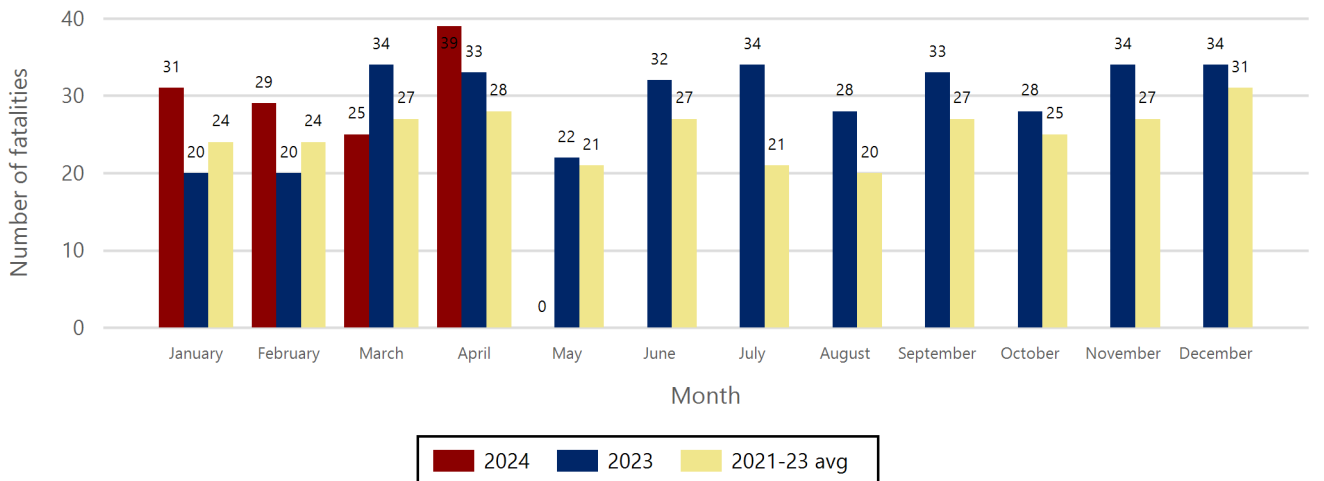
	2024	2023	+/-	% change
May to date	0	2	-2	-100.0
Calendar year to date	124	109	15	13.8
12-month period to date	367	272	95	34.9

NSW 50% Reduction Target : 285 , currently 82 over target

Fatalities 12-month moving total - 2019 to date



Road fatality comparative statistics by month for 2023, 2024 and the average for the 3-year period 2021-2023



	2024	2023
Data completeness status	(Prelim)	(Prelim)

Preliminary Data - Note: Fatalities will be removed from statistics if subsequent Police or Coronial investigation shows that they did not fall within National reporting guidelines. Fatalities will be added from a crash occurring prior to today's date where a person subsequently dies within 30 days or the crash is reported late. Typically, these variations may result in a statewide annual decrease of up to 12 fatalities from the initial preliminary figure. Fatalities are deaths which occurred within 30 days of a crash as a result of injuries received in the crash. The crash must have occurred within the surveyed road reserve.

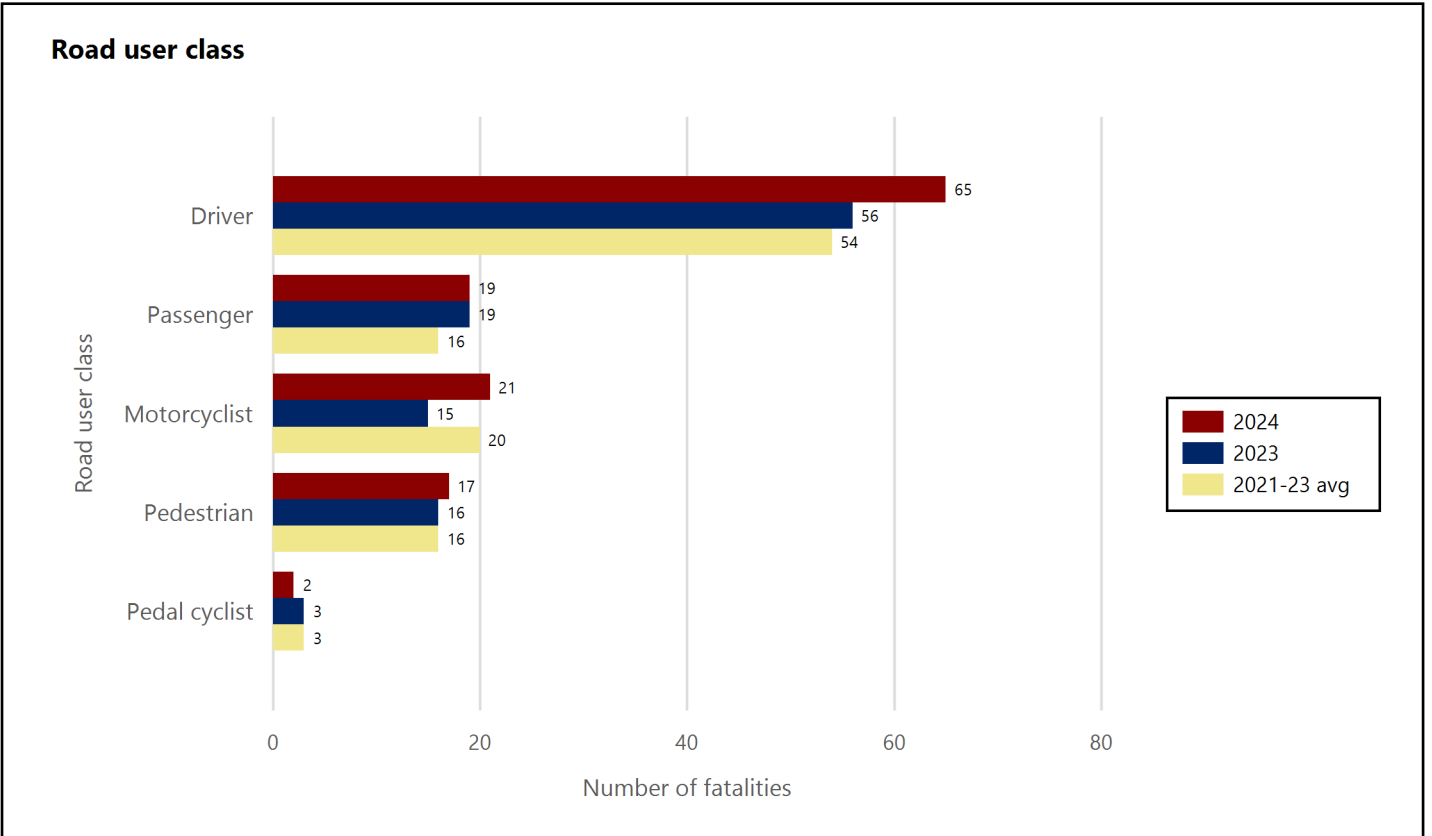


Road Toll Update for NSW

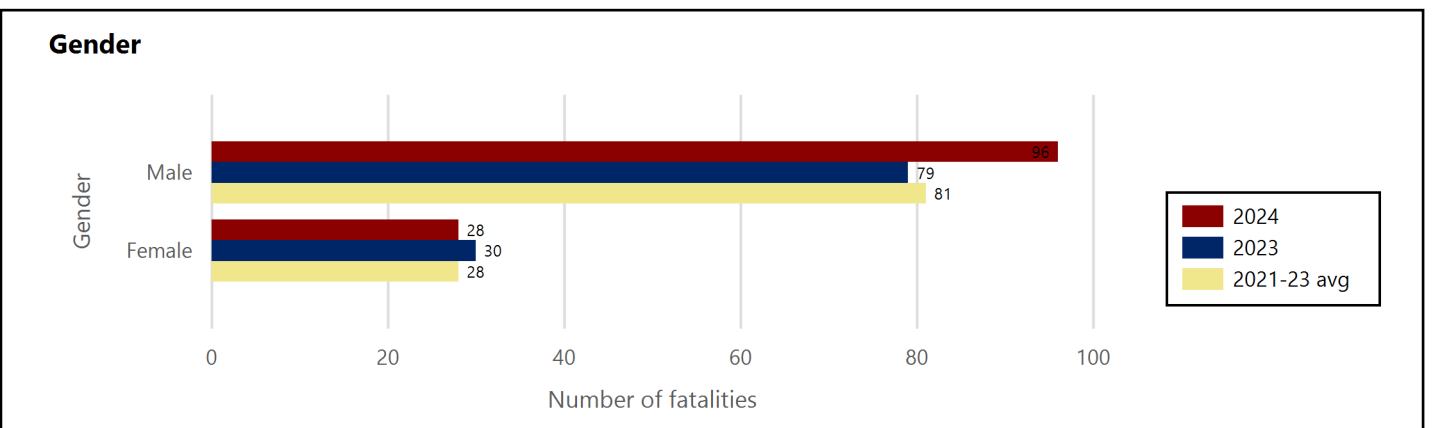
up to and including

Tuesday, 07 May 2024

Road fatality comparative statistics for the period 01 January to 07 May 2023, 2024 and the average for the same period in 2021, 2022 and 2023



Motorcyclist & pedal cyclist includes passenger



Excludes unknown gender

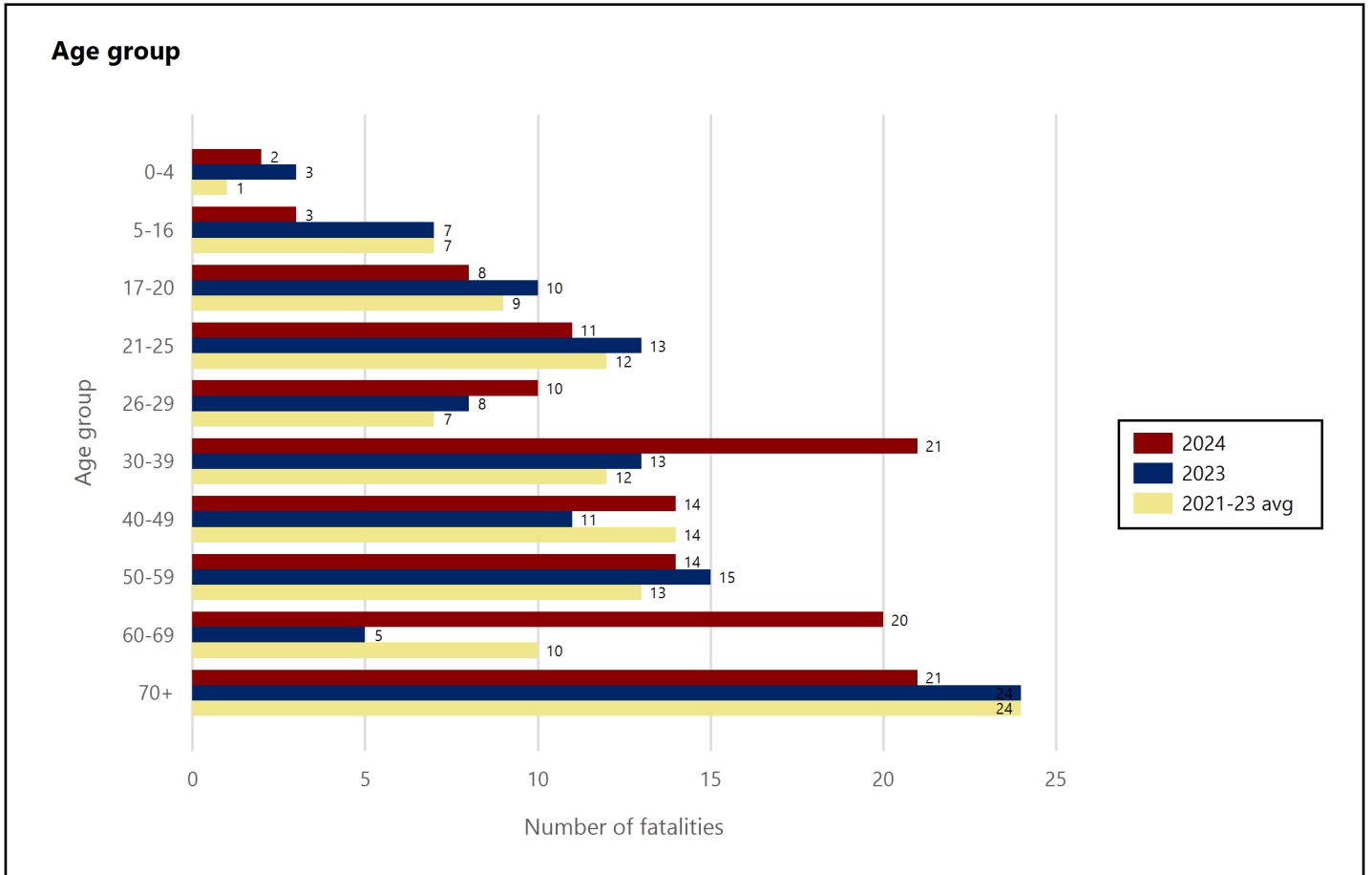


Road Toll Update for NSW

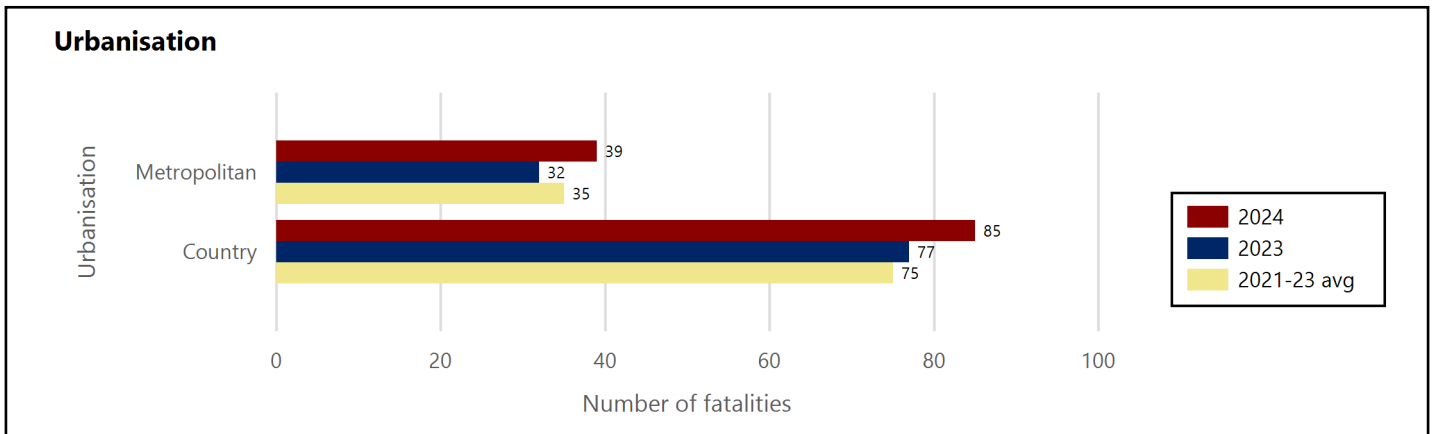
up to and including

Tuesday, 07 May 2024

Road fatality comparative statistics for the period 01 January to 07 May 2023, 2024 and the average for the same period in 2021, 2022 and 2023



Excludes unknown age



* Fatality data are preliminary and subject to change



Road Toll Update for NSW

up to and including

Tuesday, 07 May 2024

Road fatality comparative statistics for the period 01 January to 07 May 2023, 2024 and the average for the same period in 2021, 2022 and 2023

Road user class	2024	2023	+/-	% change	3-year average
Driver	65	56	9	16.1	54
Passenger	19	19	0	0.0	16
Motorcyclist	21	15	6	40.0	20
Pedestrian	17	16	1	6.3	16
Pedal cyclist	2	3	-1	-33.3	3

Motorcyclist & pedal cyclist includes passenger

Gender	2024	2023	+/-	% change	3-year average
Male	96	79	17	21.5	81
Female	28	30	-2	-6.7	28

Excludes unknown gender

Age group	2024	2023	+/-	% change	3-year average
0-4	2	3	-1	-33.3	1
5-16	3	7	-4	-57.1	7
17-20	8	10	-2	-20.0	9
21-25	11	13	-2	-15.4	12
26-29	10	8	2	25.0	7
30-39	21	13	8	61.5	12
40-49	14	11	3	27.3	14
50-59	14	15	-1	-6.7	13
60-69	20	5	15	300.0	10
70+	21	24	-3	-12.5	24

Excludes unknown age

Urbanisation	2024	2023	+/-	% change	3-year average
Metropolitan	39	32	7	21.9	35
Country	85	77	8	10.4	75

* Fatality data are preliminary and subject to change