



Road Toll Update for NSW

up to and including

Thursday, 09 May 2024

Fatalities advised since last update issued: 1

Fatalities excluded since last update issued: 0

CALENDAR YEAR TO MIDNIGHT 09 May						12-MONTH PERIOD ENDING 09 May					
	2024 (Prelim)	2023 (Prelim)	DIFF.	3-YEAR AVERAGE	DIFF.	2024 (Prelim)	2023 (Prelim)	DIFF	3-YEAR AVERAGE	DIFF.	
Fatal crashes	113	97	16	100	13	331	249	82	263	68	
Fatalities											
Driver	66	57	9	54	12	183	125	58	137	46	
Passenger	19	19	0	16	3	69	46	23	39	30	
Motorcyclist	21	15	6	20	1	59	44	15	54	5	
Pedestrian	17	17	0	16	1	48	51	-3	43	5	
Pedal cyclist	2	3	-1	3	-1	7	8	-1	8	-1	
Other	0	0	0	0	0	0	0	0	0	0	
Total Killed	125	111	14	110	15	366	274	92	282	84	

* Motorcyclist and pedal cyclist includes passengers

PRELIMINARY 2023 TOTALS:	Fatal crashes 315	Fatalities 352
---------------------------------	--------------------------	-----------------------

Preliminary Data - Note: Fatalities will be removed from statistics if subsequent Police or Coronial investigation shows that they did not fall within National reporting guidelines. Fatalities will be added from a crash occurring prior to today's date where a person subsequently dies within 30 days or the crash is reported late. Typically, these variations may result in a statewide annual decrease of up to 12 fatalities from the initial preliminary figure. Fatalities are deaths which occurred within 30 days of a crash as a result of injuries received in the crash. The crash must have occurred within the surveyed road reserve.



Road Toll Update for NSW

up to and including

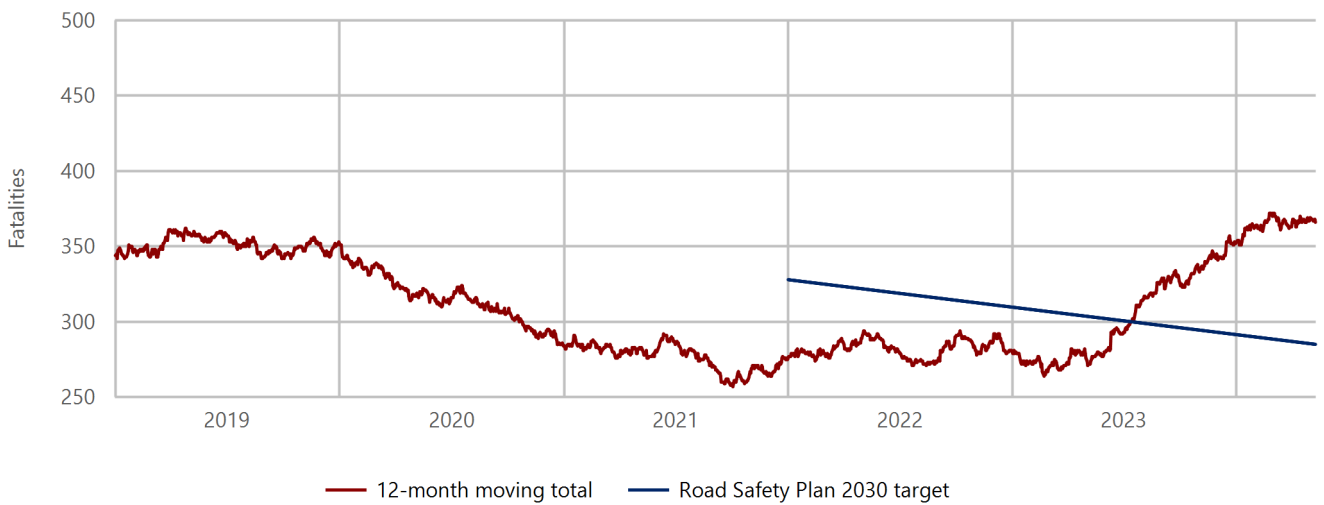
Thursday, 09 May 2024

NSW Road Toll Statistics: Up to and including 09 May 2024

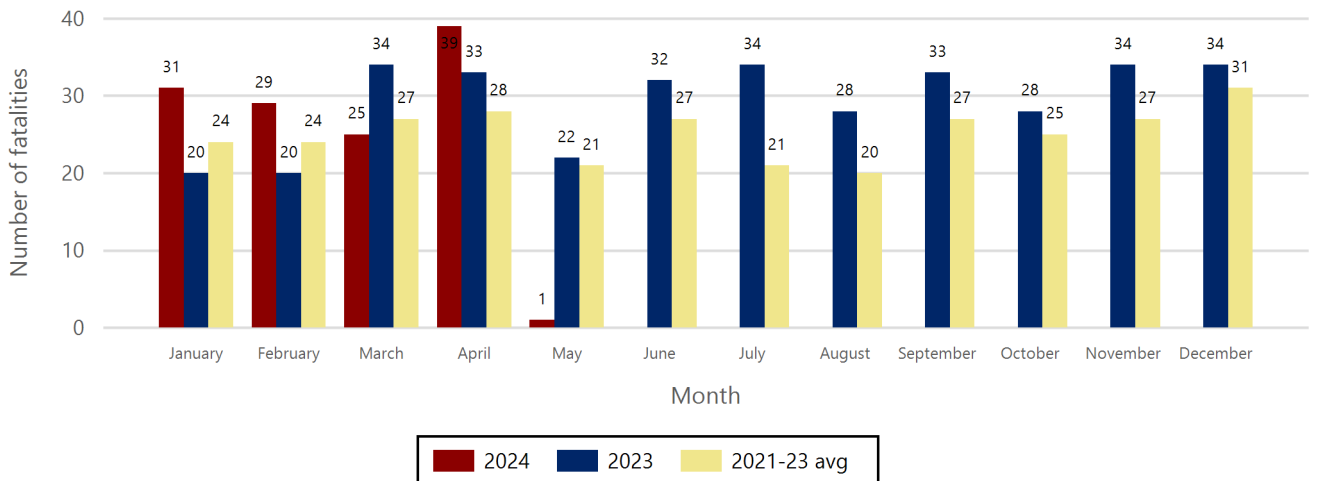
	2024	2023	+/-	% change
May to date	1	4	-3	-75.0
Calendar year to date	125	111	14	12.6
12-month period to date	366	274	92	33.6

NSW 50% Reduction Target : 285 , currently 81 over target

Fatalities 12-month moving total - 2019 to date



Road fatality comparative statistics by month for 2023, 2024 and the average for the 3-year period 2021-2023



	2024	2023
Data completeness status	(Prelim)	(Prelim)

Preliminary Data - Note: Fatalities will be removed from statistics if subsequent Police or Coronial investigation shows that they did not fall within National reporting guidelines. Fatalities will be added from a crash occurring prior to today's date where a person subsequently dies within 30 days or the crash is reported late. Typically, these variations may result in a statewide annual decrease of up to 12 fatalities from the initial preliminary figure. Fatalities are deaths which occurred within 30 days of a crash as a result of injuries received in the crash. The crash must have occurred within the surveyed road reserve.

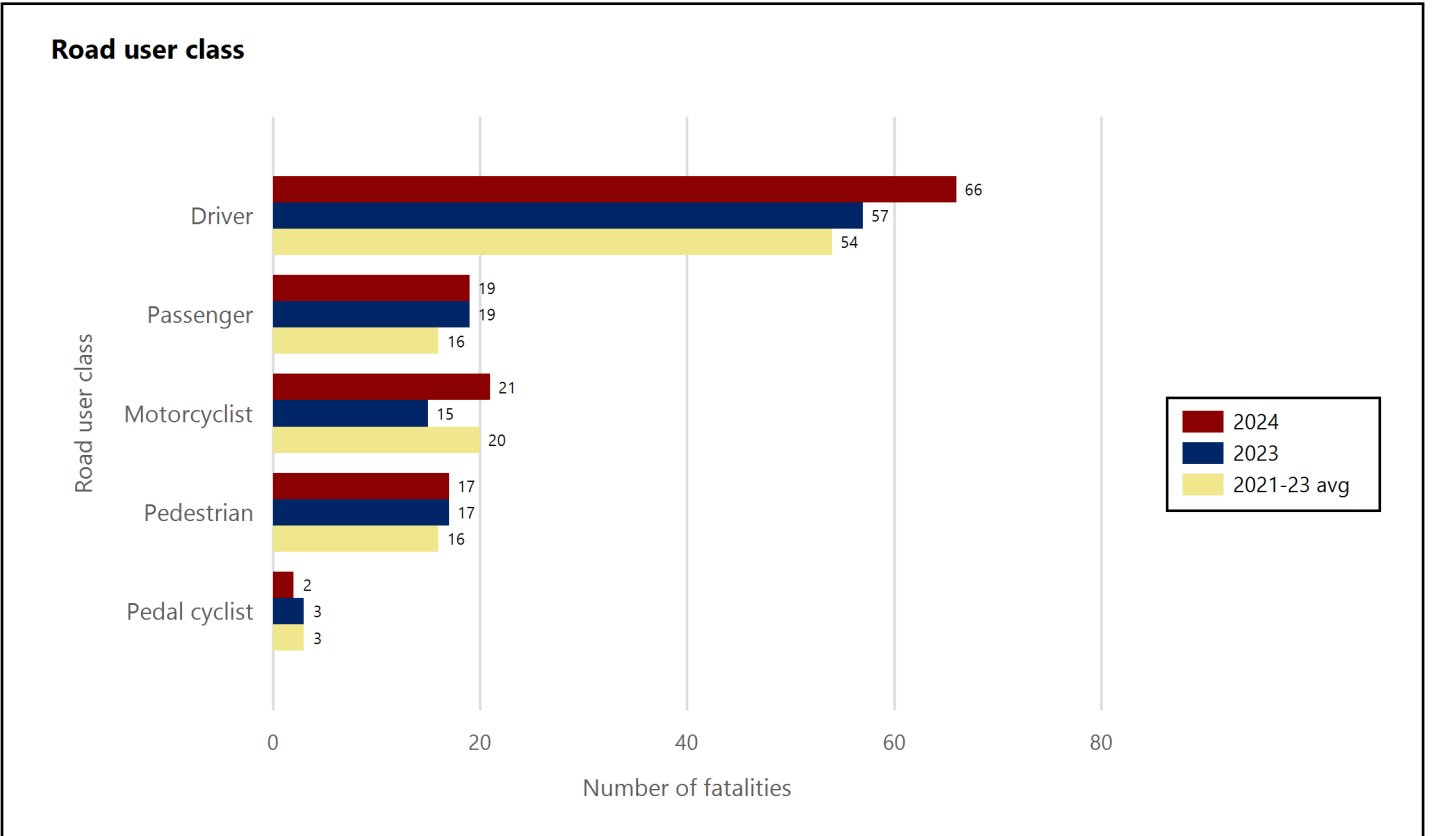


Road Toll Update for NSW

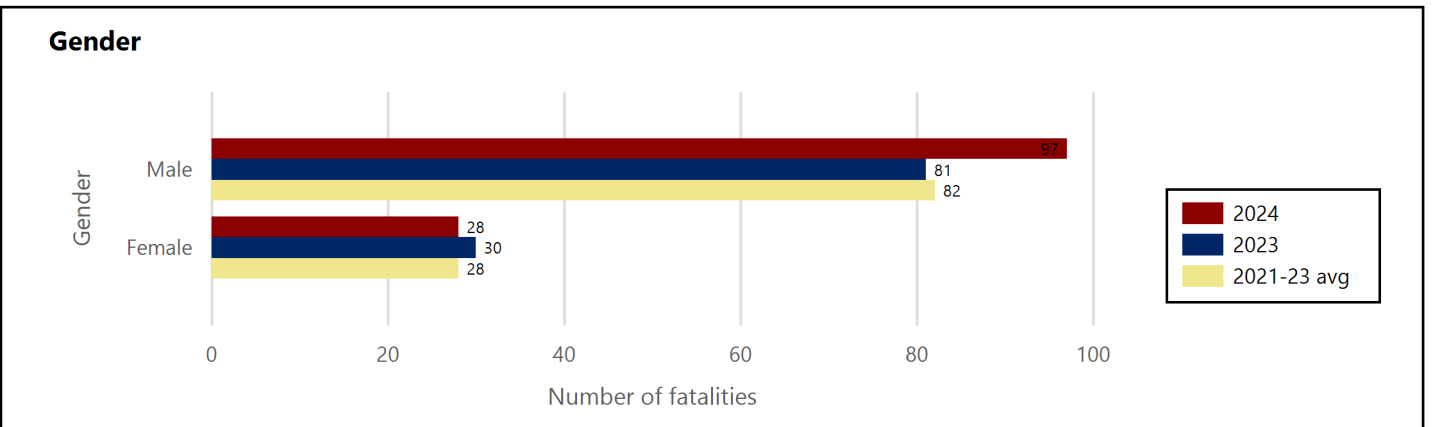
up to and including

Thursday, 09 May 2024

Road fatality comparative statistics for the period 01 January to 09 May 2023, 2024 and the average for the same period in 2021, 2022 and 2023



Motorcyclist & pedal cyclist includes passenger



Excludes unknown gender

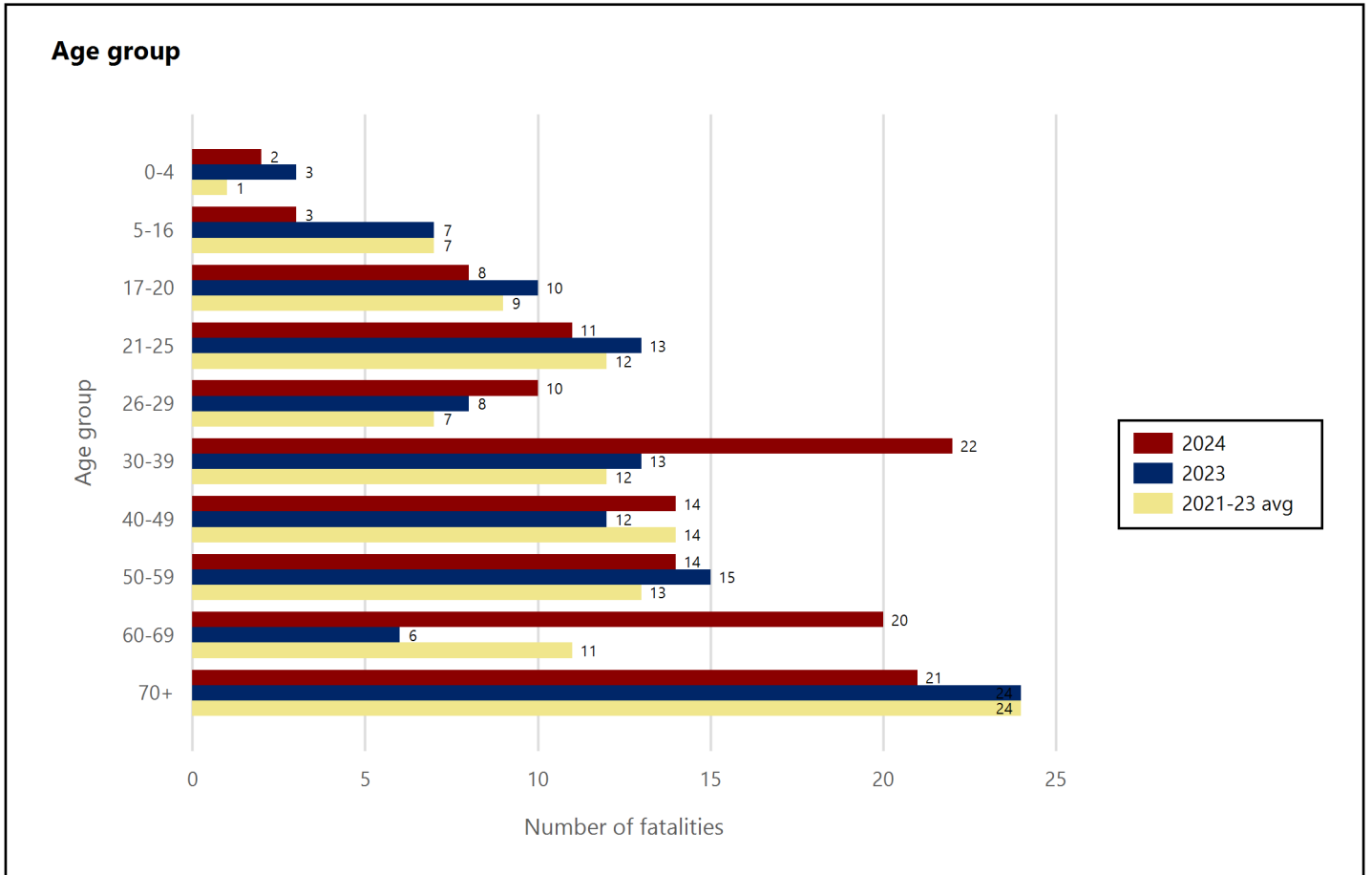


Road Toll Update for NSW

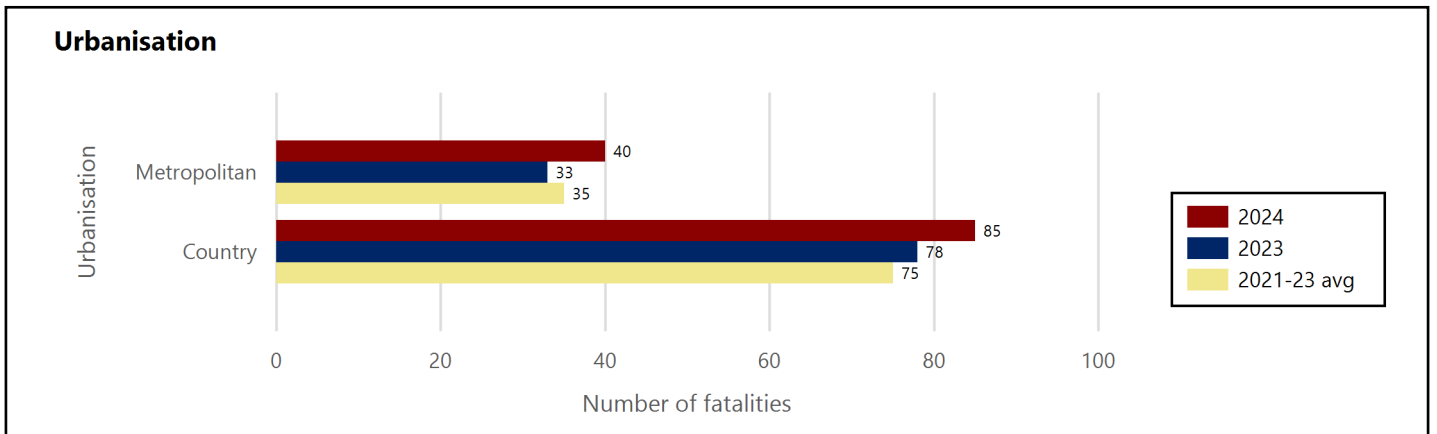
up to and including

Thursday, 09 May 2024

Road fatality comparative statistics for the period 01 January to 09 May 2023, 2024 and the average for the same period in 2021, 2022 and 2023



Excludes unknown age



* Fatality data are preliminary and subject to change



Road Toll Update for NSW

up to and including

Thursday, 09 May 2024

Road fatality comparative statistics for the period 01 January to 09 May 2023, 2024 and the average for the same period in 2021, 2022 and 2023

Road user class	2024	2023	+/-	% change	3-year average
Driver	66	57	9	15.8	54
Passenger	19	19	0	0.0	16
Motorcyclist	21	15	6	40.0	20
Pedestrian	17	17	0	0.0	16
Pedal cyclist	2	3	-1	-33.3	3

Motorcyclist & pedal cyclist includes passenger

Gender	2024	2023	+/-	% change	3-year average
Male	97	81	16	19.8	82
Female	28	30	-2	-6.7	28

Excludes unknown gender

Age group	2024	2023	+/-	% change	3-year average
0-4	2	3	-1	-33.3	1
5-16	3	7	-4	-57.1	7
17-20	8	10	-2	-20.0	9
21-25	11	13	-2	-15.4	12
26-29	10	8	2	25.0	7
30-39	22	13	9	69.2	12
40-49	14	12	2	16.7	14
50-59	14	15	-1	-6.7	13
60-69	20	6	14	233.3	11
70+	21	24	-3	-12.5	24

Excludes unknown age

Urbanisation	2024	2023	+/-	% change	3-year average
Metropolitan	40	33	7	21.2	35
Country	85	78	7	9.0	75

* Fatality data are preliminary and subject to change