



Road Toll Update for NSW

up to and including

Monday, 20 May 2024

Fatalities advised since last update issued: 0

Fatalities excluded since last update issued: 0

CALENDAR YEAR TO MIDNIGHT 20 May						12-MONTH PERIOD ENDING 20 May					
	2024 (Prelim)	2023 (Prelim)	DIFF.	3-YEAR AVERAGE	DIFF.	2024 (Prelim)	2023 (Prelim)	DIFF.	3-YEAR AVERAGE	DIFF.	
Fatal crashes	122	105	17	105	17	330	255	75	263	67	
Fatalities											
Driver	70	61	9	57	13	182	128	54	137	45	
Passenger	19	20	-1	17	2	68	47	21	39	29	
Motorcyclist	23	16	7	22	1	59	44	15	54	5	
Pedestrian	20	19	1	17	3	49	53	-4	43	6	
Pedal cyclist	3	3	0	3	0	8	8	0	8	0	
Other	0	0	0	0	0	0	0	0	0	0	
Total Killed	135	119	16	115	20	366	280	86	282	84	

* Motorcyclist and pedal cyclist includes passengers

PRELIMINARY 2023 TOTALS:	Fatal crashes 313	Fatalities 350
---------------------------------	--------------------------	-----------------------

Preliminary Data - Note: Fatalities will be removed from statistics if subsequent Police or Coronial investigation shows that they did not fall within National reporting guidelines. Fatalities will be added from a crash occurring prior to today's date where a person subsequently dies within 30 days or the crash is reported late. Typically, these variations may result in a statewide annual decrease of up to 12 fatalities from the initial preliminary figure. Fatalities are deaths which occurred within 30 days of a crash as a result of injuries received in the crash. The crash must have occurred within the surveyed road reserve.



Road Toll Update for NSW

up to and including

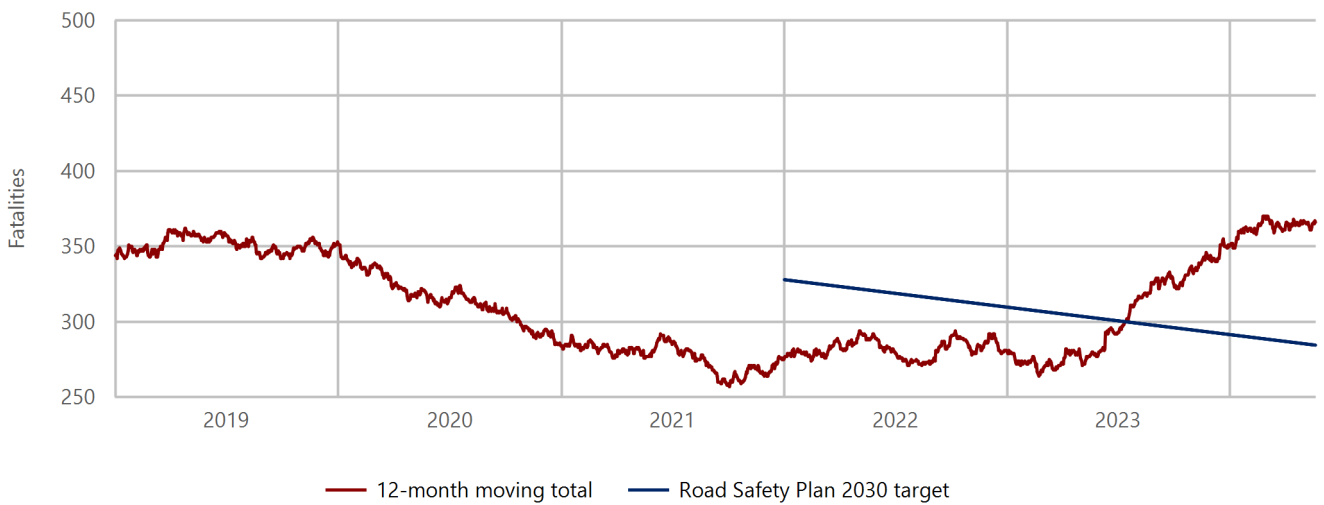
Monday, 20 May 2024

NSW Road Toll Statistics: Up to and including 20 May 2024

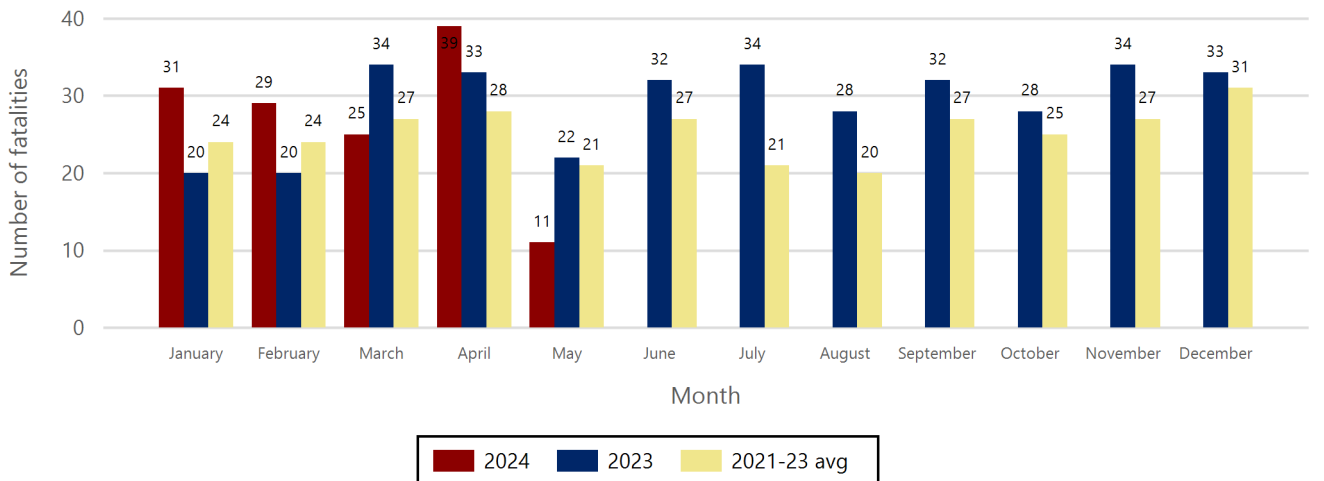
	2024	2023	+/-	% change
May to date	11	12	-1	-8.3
Calendar year to date	135	119	16	13.4
12-month period to date	366	280	86	30.7

NSW 50% Reduction Target : 285 , currently 81 over target

Fatalities 12-month moving total - 2019 to date



Road fatality comparative statistics by month for 2023, 2024 and the average for the 3-year period 2021-2023



	2024	2023
Data completeness status	(Prelim)	(Prelim)

Preliminary Data - Note: Fatalities will be removed from statistics if subsequent Police or Coronial investigation shows that they did not fall within National reporting guidelines. Fatalities will be added from a crash occurring prior to today's date where a person subsequently dies within 30 days or the crash is reported late. Typically, these variations may result in a statewide annual decrease of up to 12 fatalities from the initial preliminary figure. Fatalities are deaths which occurred within 30 days of a crash as a result of injuries received in the crash. The crash must have occurred within the surveyed road reserve.

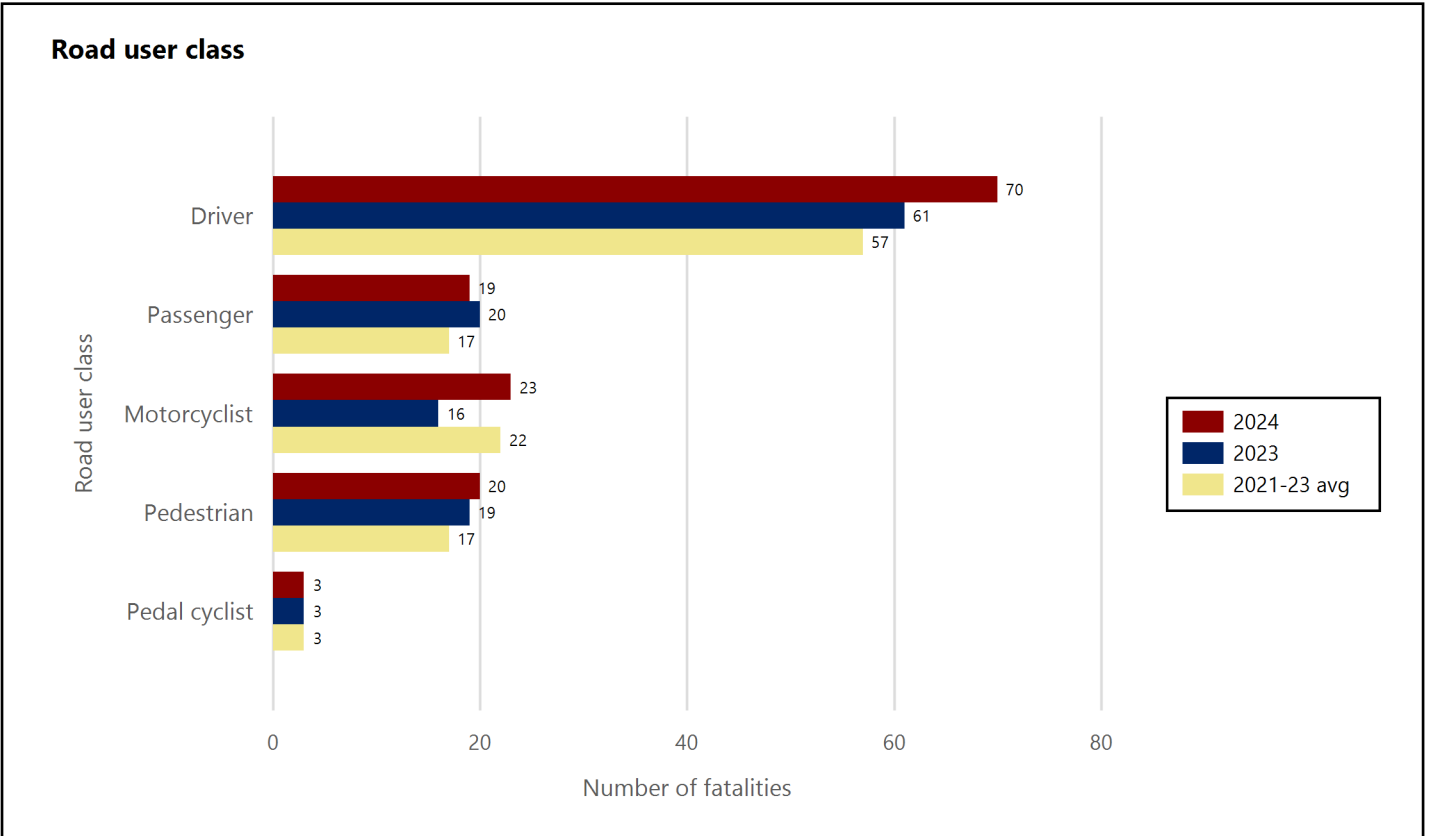


Road Toll Update for NSW

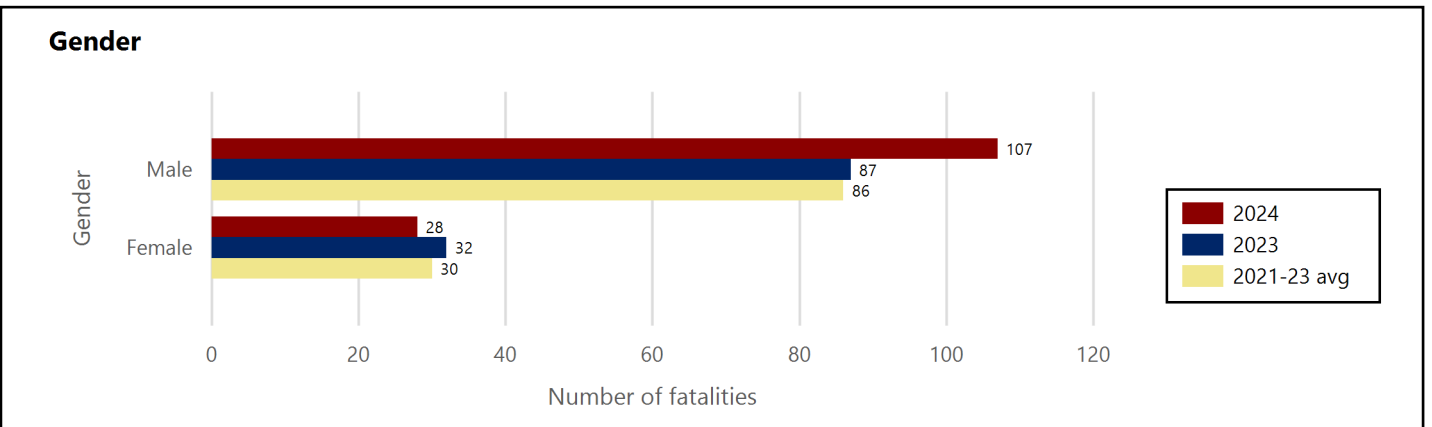
up to and including

Monday, 20 May 2024

Road fatality comparative statistics for the period 01 January to 20 May 2023, 2024 and the average for the same period in 2021, 2022 and 2023



Motorcyclist & pedal cyclist includes passenger



Excludes unknown gender

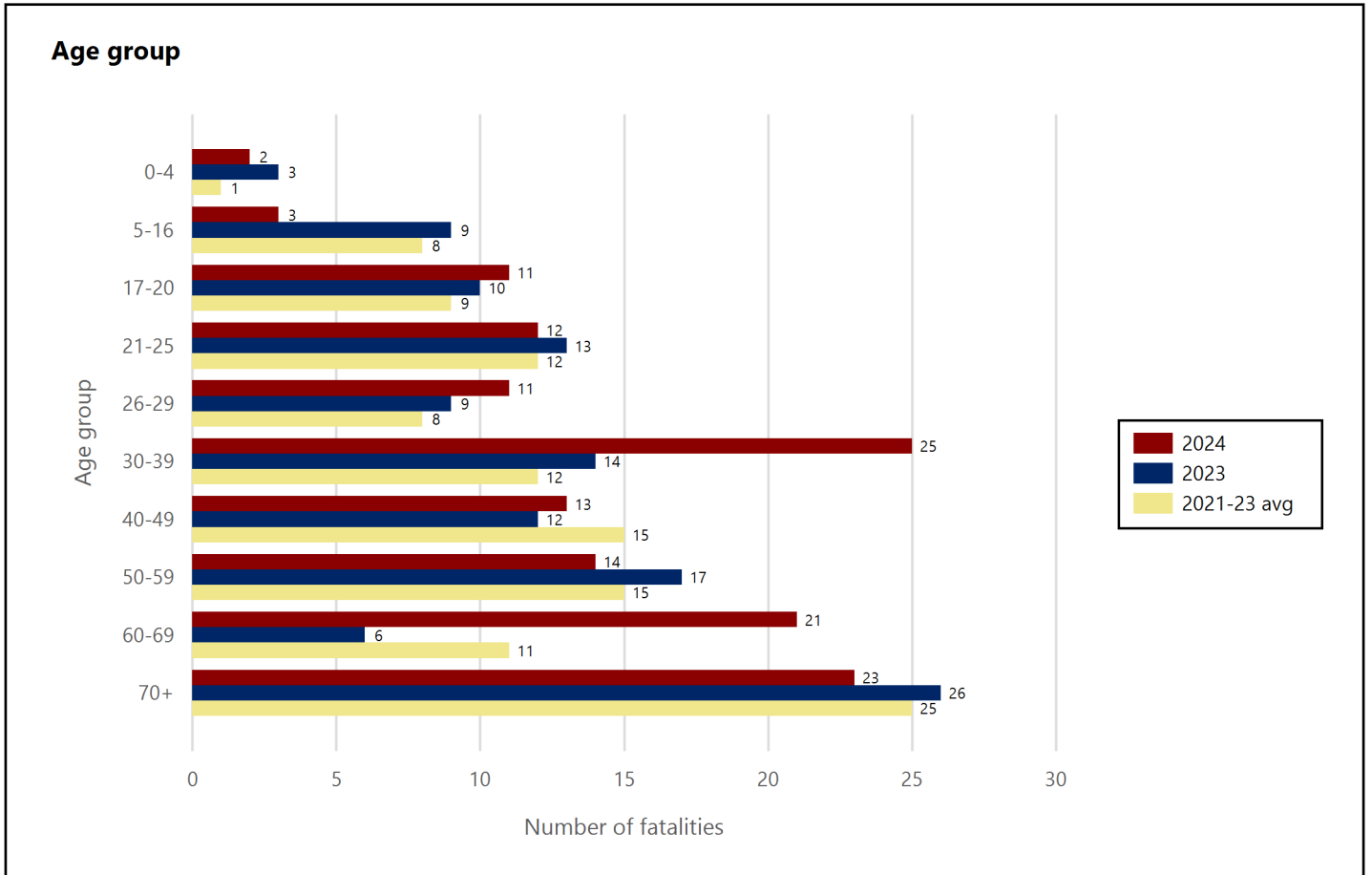


Road Toll Update for NSW

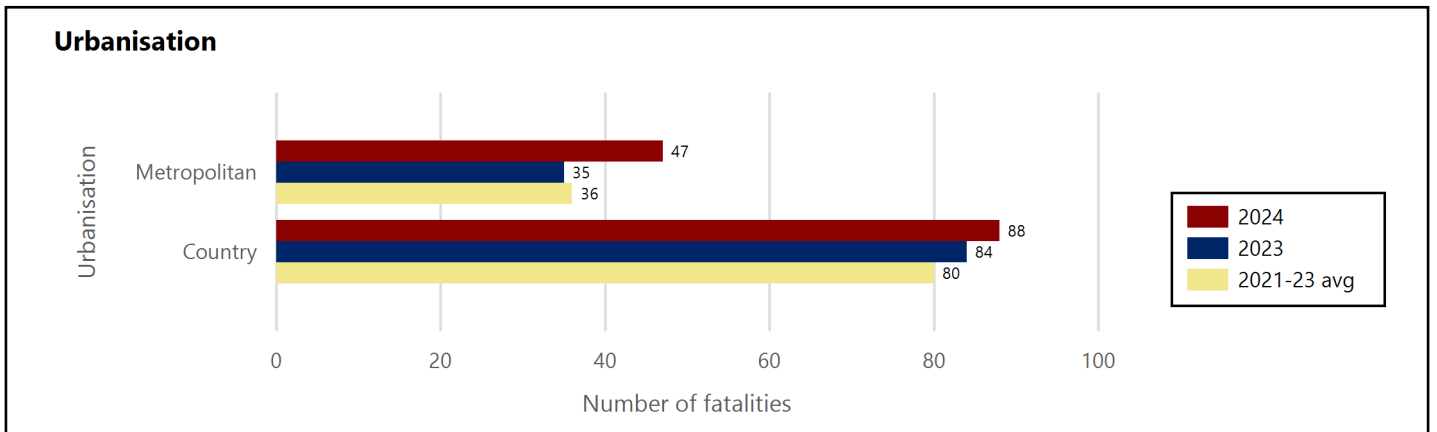
up to and including

Monday, 20 May 2024

Road fatality comparative statistics for the period 01 January to 20 May 2023, 2024 and the average for the same period in 2021, 2022 and 2023



Excludes unknown age



* Fatality data are preliminary and subject to change



Road Toll Update for NSW

up to and including

Monday, 20 May 2024

Road fatality comparative statistics for the period 01 January to 20 May 2023, 2024 and the average for the same period in 2021, 2022 and 2023

Road user class	2024	2023	+/-	% change	3-year average
Driver	70	61	9	14.8	57
Passenger	19	20	-1	-5.0	17
Motorcyclist	23	16	7	43.8	22
Pedestrian	20	19	1	5.3	17
Pedal cyclist	3	3	0	0.0	3

Motorcyclist & pedal cyclist includes passenger

Gender	2024	2023	+/-	% change	3-year average
Male	107	87	20	23.0	86
Female	28	32	-4	-12.5	30

Excludes unknown gender

Age group	2024	2023	+/-	% change	3-year average
0-4	2	3	-1	-33.3	1
5-16	3	9	-6	-66.7	8
17-20	11	10	1	10.0	9
21-25	12	13	-1	-7.7	12
26-29	11	9	2	22.2	8
30-39	25	14	11	78.6	12
40-49	13	12	1	8.3	15
50-59	14	17	-3	-17.6	15
60-69	21	6	15	250.0	11
70+	23	26	-3	-11.5	25

Excludes unknown age

Urbanisation	2024	2023	+/-	% change	3-year average
Metropolitan	47	35	12	34.3	36
Country	88	84	4	4.8	80

* Fatality data are preliminary and subject to change