

Pacific Highway / Oxley Highway Interchange

Safety improvement work completed

December 2024



Transport for NSW acknowledges the Birpai people as the Traditional Custodians of the lands on which we work and pays respect to Elders past and present.

Transport for NSW has completed work to improve safety and reduce queuing on the northbound exit lane of the Pacific Highway and Oxley Highway interchange.

Safety improvements

Transport has delivered a cost-effective short-term solution to increase the capacity on the northbound off ramp from one to two lanes, between the 60 km/hr sign to the roundabout.

The two lanes continue through the western side of the roundabout.

Other minor modifications to line marking have also been made to guide motorists through the roundabout.

Traffic impacts

There are changes to traffic movements for vehicles both exiting the Pacific Highway, and on the roundabout to maintain safety.

The left lane on the Pacific Highway northbound off ramp will allow motorists to turn left towards Wauchope, continue straight (back onto the Pacific Highway) and turn right towards Port Macquarie.

The right lane will allow motorists to turn right or make a U-turn.

When entering the roundabout from the east, new line markings will guide motorists travelling north to remain in the outside lane to continue onto the Pacific Highway. Motorists wishing to make a U-

turn back towards Port Macquarie can use both lanes.

These changes are shown on the map overleaf and a video outlining the changes for can be found at transport.nsw.gov.au/oxleyinterchange.

New signage has been installed as part of the project to assist motorists exiting the Pacific Highway.

Larger interchange upgrade

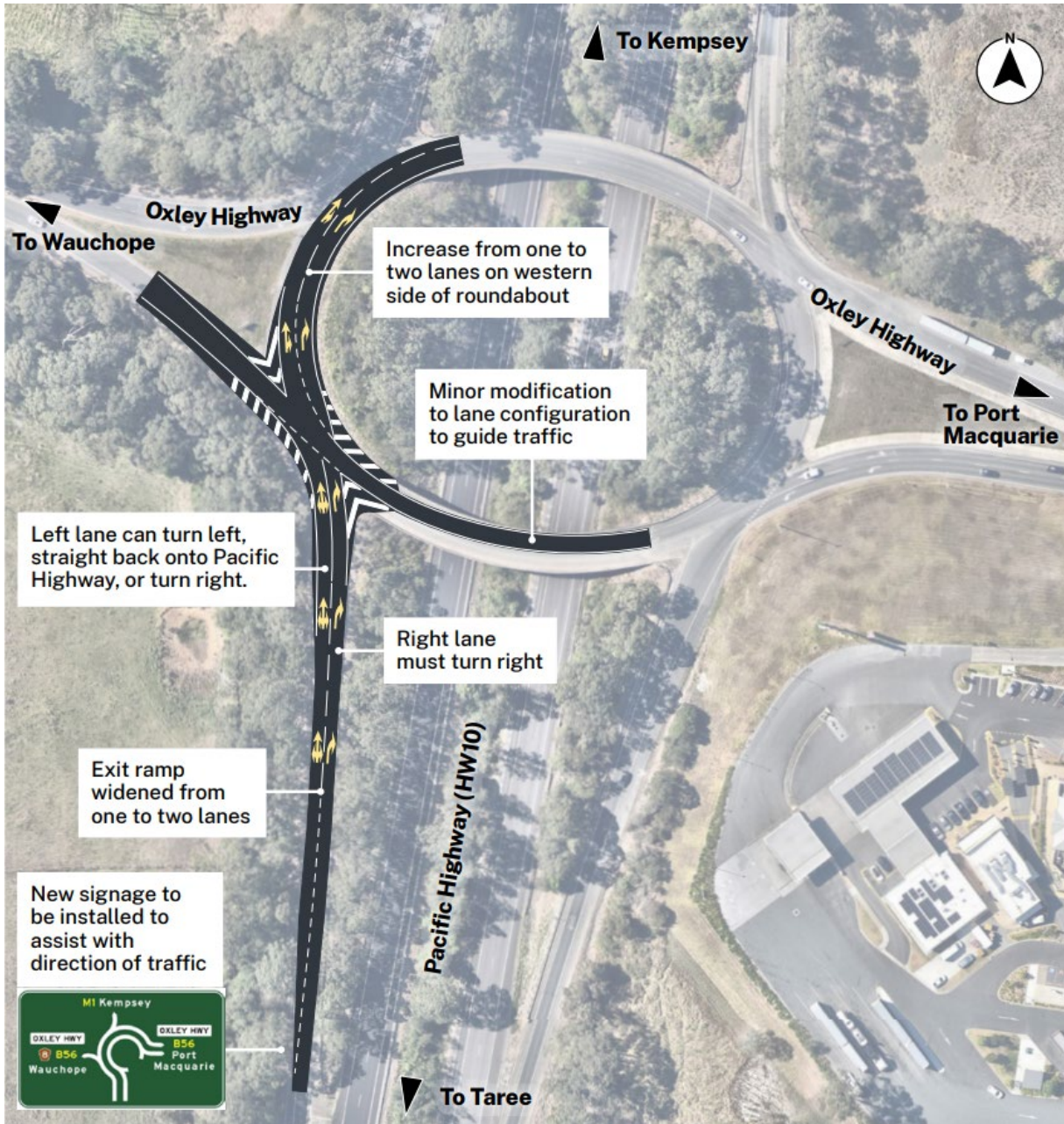
The NSW Government has committed \$20 million to the design and delivery of safety and efficiency improvements to the Pacific Highway and Oxley Highway interchange.

The project involves increasing capacity for the northbound exit lane, along with duplication of the westbound lanes on the Oxley Highway between Billabong Drive and the interchange. These works are complementary to the upgrades required as part of the proposed highway service centre development on the southwest corner of the interchange.

We have completed detailed survey and geotechnical investigations, and updated traffic modelling. We are continuing to carry out environmental investigations that will help inform the concept design, which will be displayed for community feedback.

Timing for construction of the upgrade has not been confirmed and is subject to project approval.

New traffic movements



Contact us



OxleyInterchange@transport.nsw.gov.au



transport.nsw.gov.au/oxleyinterchange



Pacific PO Box 576
Grafton NSW 2460



For the latest traffic updates:

Call 132 701, visit [livetraffic.com](https://www.livetraffic.com) or download the app Live Traffic NSW



Interpreter service

For languages other than English call 131 450
Arabic • Greek • Hindi • Mandarin • Vietnamese

لطلب خدمة الترجمة الشفهية للغات غير الإنجليزية اتصل
بالرقم 131 450

Για υπηρεσίες διερμηνείας σε άλλες γλώσσες εκτός από
τα Αγγλικά καλέστε το 131 450

अंग्रेज़ी के अतिरिक्त अन्य भाषाओं के लिए दुभाषिया सेवा
131 450 पर कॉल करें

获取英语以外的其他语言口译协助服务可以致电131 450

Để có dịch vụ thông ngôn cho các ngôn ngữ khác tiếng
Anh, gọi số 131 450

www.transport.nsw.gov.au/privacy-statement#Your_Privacy