

Road safety work at Great Western Highway, Pendle Way and Ettalong Road intersection, Pendle Hill from Wednesday 4 October 2023

Community Notification September 2023



Transport for NSW acknowledges the Dharug people as the traditional custodians of this land on which we work and pay respect to Elders past and present.

Transport for NSW will carry out safety improvement work at the intersection of Great Western Highway, Pendle Way and Ettalong Road, Pendle Hill from Wednesday 4 October 2023.

The work will involve extending the Great Western Highway right turn bays at the intersection by approximately 100 metres in each direction, to ease congestion and improve safety for all road users.

Road Safety Program

This project is being delivered as part of the Road Safety Stimulus Program, which aims to improve safety and reduce crashes on NSW roads. Since 2020, the Australian and NSW governments have invested more than \$600 million into road safety projects across NSW as part of this program.

The project has been informed by investigation work carried out at the intersection in 2021 and 2022.

What work are we doing?

The project will involve:

- narrowing the central median on Great Western Highway to enable the extension of the right turn bays (in both directions)
- installing new drainage infrastructure
- resurfacing the existing asphalt road surface
- carrying out line marking.

What have we done so far?

We have established the site compound on Great Western Highway, Prospect, opposite Fox Hills Golf Course. The location of the site compound can be

seen on the map overleaf. The compound site will be used for the storage of equipment, construction materials and staff amenities.

What work are we doing next?

We had expected to complete early investigation work by 29 September however, this will now be completed between **Wednesday 4 October** and **Wednesday 1 November 2023**.

We will keep the community updated as the work progresses and notify again before we commence construction.

When will we be working?

To complete the investigation work, we will carry out **six night shifts** between **Wednesday 4 October** and **Wednesday 1 November 2023**.

Our work hours will be from **Sunday to Thursday** between **7pm** and **5am** the next day.

We will not work on Fridays (after 5am), Saturdays or on public holidays.

How will the work affect you?

Our work needs to be carried out at night to limit disruption to traffic and reduce safety risks to our workers, pedestrians and motorists.

It may be noisy at times; however, we will make every effort to minimise our impacts by:

- using noise blankets around our work site
- turning off equipment and vehicles when they are not in use
- completing the noisier work by midnight.



Traffic changes

There will be temporary traffic changes to make sure the work zone is safe.

Temporary lane closures will be in place. At times, we may implement a contraflow traffic arrangement.

This traffic arrangement will see motorists temporarily redirected onto the opposite carriageway for a short distance whilst passing the work zone.

Motorists unable to access businesses, homes or side streets within the contraflow are advised to use the next available side street after they exit the

contraflow to redirect to their destination. Please note, the contraflow may affect travel times.

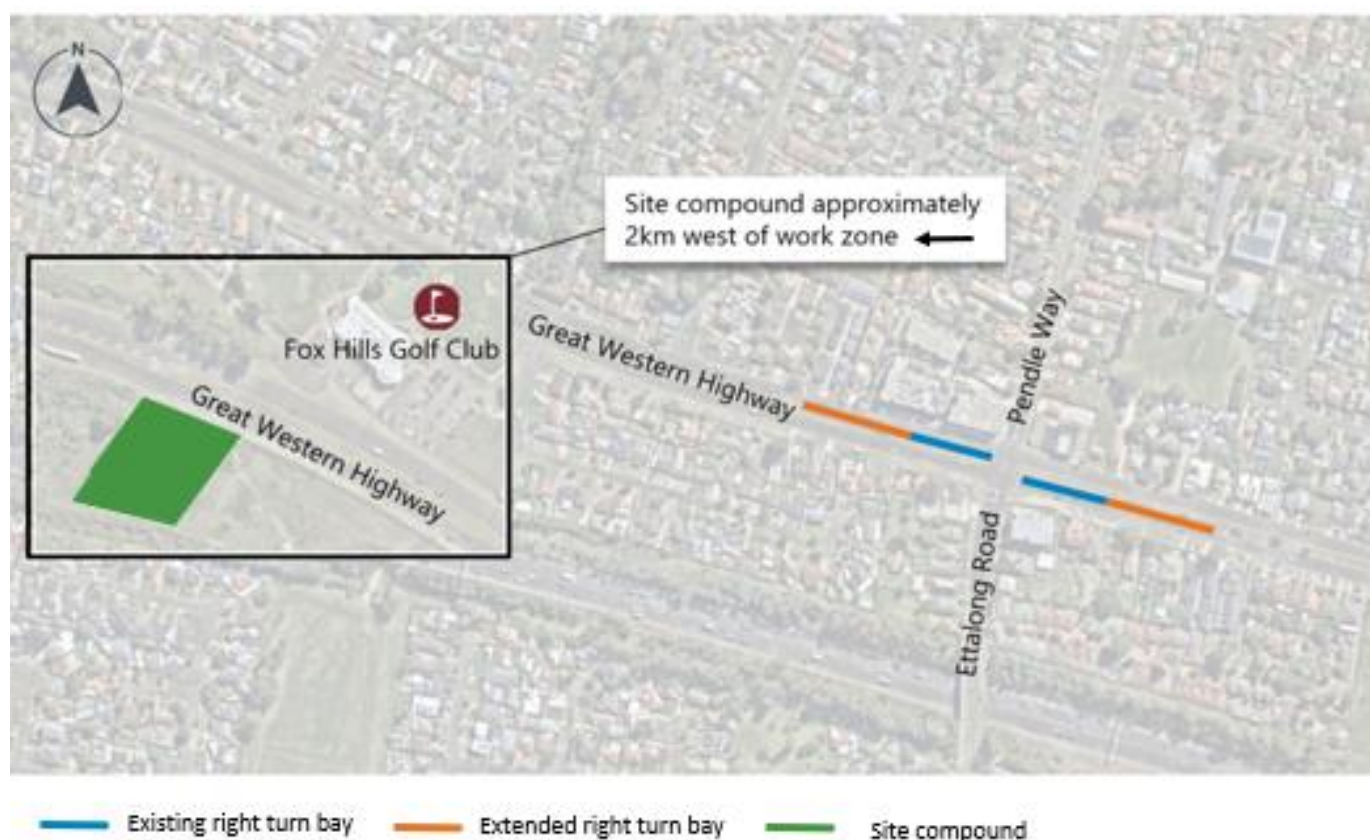
A 40 km/h speed limit will be in place while we are working at night and a reduced speed limit of 60 km/h will be in place at all times for the duration of the project.

Please keep to speed limits and follow the direction of traffic controllers and signs.

Join our mailing list

Please contact our delivery partner, Fulton Hogan, using the details below to request project updates via email.

Location of work and compound site – Great Western Highway, Pendle Hill and Prospect



Contact us



Project Infoline **1800 568 981**



Info.river@fultonhogan.com.au



transport.nsw.gov.au/projects



PO Box 6099, Alexandria NSW 2015



For the latest traffic updates
Call 132 701, visit [livetraffic.com](https://www.livetraffic.com)
or download the app Live Traffic NSW



Interpreter service

For languages other than English call 131 450
Arabic • Cantonese • Hindi • Mandarin • Vietnamese
لطلب خدمة الترجمة الشفهية للغات غير الإنجليزية اتصل بالرقم
131 450

獲取英語以外的其他語言傳譯協助服務可以致電**131 450**

अंग्रेज़ी के अतिरिक्त अन्य भाषाओं के लिए दुभाषिया सेवा **131 450**
पर कॉल करें

獲取英語以外的其他語言口譯協助服務可以致電**131 450**

Để có dịch vụ thông ngôn cho các ngôn ngữ khác tiếng Anh,
gọi số **131 450**



Subscribe for updates at info.river@fultonhogan.com.au

www.transport.nsw.gov.au/privacy-statement#Your_Privacy