

New England Highway – Singleton Bypass

Project update – Early work activities

March 2024



Transport for NSW acknowledges the Wonnarua/Wanaruah people as the Traditional Custodians of the lands on which we work and pays respect to Elders past and present.

The Australian Government has invested \$560 million and the NSW Government has invested \$140 million to build the Singleton Bypass. The bypass will improve travel times, freight efficiency and safety for local and interstate motorists.

ACCIONA will start its early work activities on the Singleton Bypass from **Monday 11 March 2024**. ACCIONA was awarded the design and construction contract for delivery of the project in November 2023.

What work are we doing?

Early work activities will include additional site survey, geotechnical and utility investigations, and installing temporary exclusion fencing and erosion and sediment controls. These activities are required to inform the detailed design for the project.

When and where we'll be working

Early work will be carried out along the New England Highway between Haggartys Lane and White Falls Lane to the south of Singleton and Maison Dieu Road and Rixs Creek Lane to the north of Singleton.

Work will also be carried out along the proposed project alignment to the west of the New England Highway and Singleton.

We have included a map to show you the work locations. This map of the proposed project alignment is indicative only and the final layout will be determined through detailed design.

Work will be carried out from **Monday 11 March to June 2024**, weather permitting. We will be working **Monday to Friday between 7am and 6pm** and on **Saturday between 8am and 1pm**.

What will this mean for you?

These activities have been assessed as low impact and will use the following equipment:

- portable survey equipment and light vehicles
- drilling rig, excavators and vacuum trucks
- traffic control.

The predicted noise level for these activities is expected to be low.

During work hours, temporary speed reductions and lane closures will be in place on the New England Highway and adjoining local roads for the safety of workers and motorists. Please keep to the speed limits and follow the direction of traffic controllers and signs.

Looking ahead

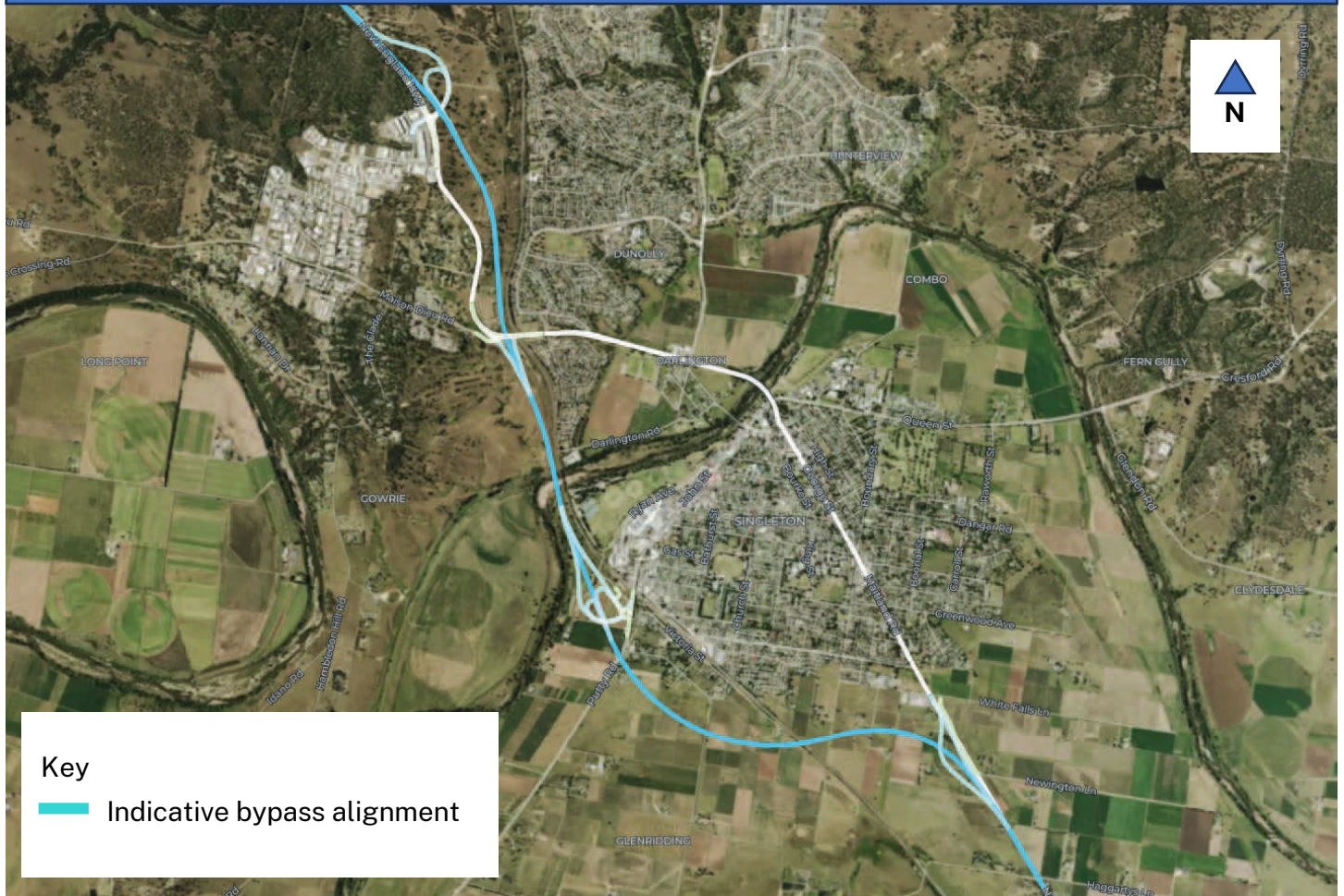
Transport will complete its early work utility relocations concurrently with ACCIONA's early work activities.



Major work on the bypass will start in mid-2024, weather permitting. The bypass is expected to be open to traffic by the end of 2026. We will keep

the community informed as the project progresses.

Proposed alignment for the Singleton Bypass



Map is indicative only, final layout to be determined through detailed design.

Contact us



Project information and 24-hour construction response line **1800 991 254**



Singleton Bypass Project
Locked Bag 2030, Newcastle NSW
2300



singleton.bypass@transport.nsw.gov.au



For the latest traffic updates: Call 132 701, visit livetraffic.com or download app Live Traffic NSW



<https://www.transport.nsw.gov.au/projects>



Interpreter service
For languages other than English call 131 450