

Community Update

Spring Farm Parkway Stage 1

April to June 2024



Spring Farm Parkway is a key east-west link that will support the Greater Macarthur Growth region, meeting the needs of a growing population by connecting communities.



Work is continuing to advance on Spring Farm Parkway Stage 1. Since our last update, we have built several key features of the east to west bridge link over the Hume Motorway. This work has included pouring of the concrete deck and installing the bridge safety barriers.

You will notice the project come together over the next few months as we continue with the final road resurfacing, permanent road signage and line-marking and switching traffic on to the newly built road.

Acknowledgement of Country

Transport for NSW acknowledges the Dharawal people as the Traditional Custodians of the lands on which we work and pay respect to Elders past and present.





What's next?

From **Tuesday 2 April** to **Sunday 30 June**, we will:

- install permanent signage and line-marking along the Hume Motorway, Menangle Road, and the east to west bridge link
- switch on the three newly, built signalised intersections
- continue to lay the new asphalt on the Hume Motorway, Menangle Road, and Spring Farm Parkway connection
- continue building kerb and guard-rail
- the opening of the east to west bridge link and the on and off ramps to the Hume Motorway, weather permitting. We will keep you updated closer to the opening date.

What you will see in this community update:

- recently completed work
- upcoming work activities
- our work schedule
- how we manage our impacts
- traffic changes
- where to keep up to date and how

What have we achieved?

- completed the concrete deck and installed safety barriers on the bridge over the Hume Motorway
- completed granular pavement construction across the entire project
- switched traffic on Menangle Road and commenced construction of the centre median
- completed all roadside drainage along the project alignment
- commenced landscaping along the project alignment

Signalised intersections at Spring Farm Parkway



Upon completion, Spring Farm Parkway Stage 1 will have installed **three active signalised intersections** at to Hume Motorway.



Provisions have been made for a fourth signalised intersection for the future Menangle Park Urban Release link.



116 concrete safety barriers

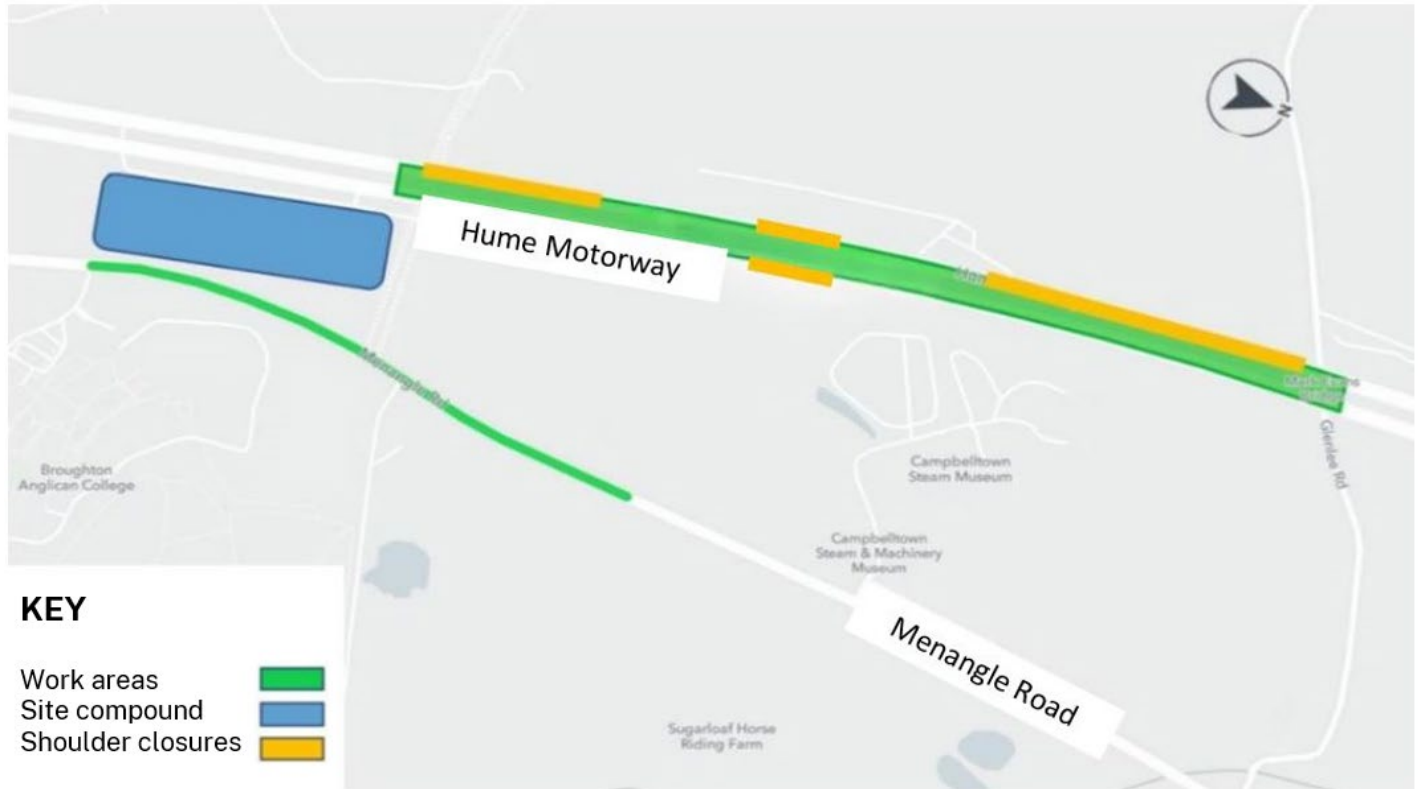
have been installed on the east to west link bridge over the Hume Motorway



390 metres³

of concrete has been poured for the east to west link bridge deck

Out of hours work areas along the Hume Motorway and Menangle Road



Our work schedule

Our standard work hours are **7am to 6pm, Monday to Friday** and **8am to 1pm on Saturdays**. These hours exclude public holidays and inclement weather.

From **Tuesday 2 April to Sunday 30 June**, night work will be required in addition to work during the day. We work at night to reduce impacts to the public on the Hume Motorway and Menangle Road.

Our night work construction hours are from **6pm to 5am, Sunday to Thursday** with no more than five consecutive nights of work at one time.

Managing our impacts

We aim to manage our work to minimise impacts on the community and the environment. Our work may be noisy at times, and we apologise for any inconvenience.

Where possible we minimise noise by:

- turning off machinery when not in use
- positioning equipment such as generators away from properties
- undertaking noise monitoring

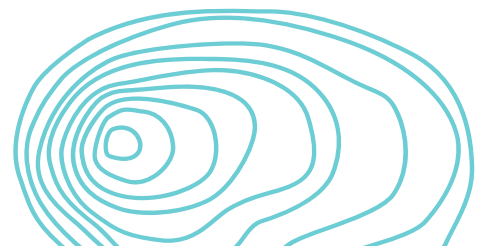
- using non-intrusive reversing alarms on all machinery
- using targeted lighting to minimise light spill
- completing high noise activities prior to midnight

What will this mean for you?

During our night construction hours, we may use noisy machinery and equipment. This will include but not be limited to, large trucks, cranes, elevated work platforms, lighting towers, rollers, excavators, profilers, and asphalt paving machines.

You may notice:

- workers and vehicles
- traffic controllers and signage
- road/lane closures, detours, and reduced speed limits
- lighting
- noise from machinery and equipment



Traffic Changes

From **April 2024**, there will be traffic changes on the Hume Motorway and Menangle Road.

To minimise traffic disruptions and reduce safety risks to workers and road users, reduced speed limits have been implemented around our construction area.

These include:

- 60km/h speed limit through Menangle Road construction zone and outside of school zone hours
- 40km/h speed limit through the Menangle Road construction zone while work is being carried out near live traffic and/or night work
- 80km/h speed limit through the Hume Motorway construction zone
- 40km/h on Hume Motorway during nightwork

Electronic signage will advise road users of these changes. Please keep to speed limits and follow signs and traffic controller's directions.

Stay up to date



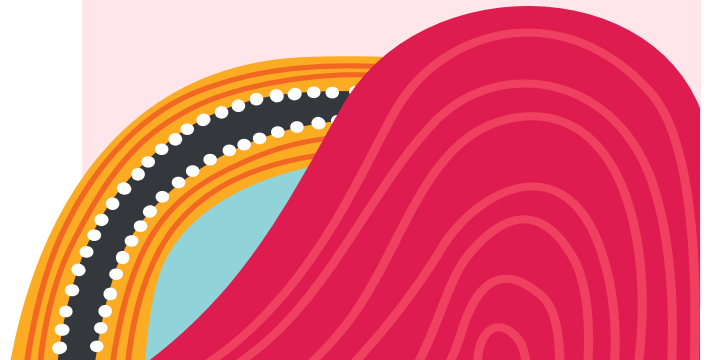
Scan the QR code to keep up to date with the project and upcoming events.

Upcoming major Traffic Switches and what to expect...

From **April 2024**, as we near project completion, we will need to build the final road pavement, resurface the road, and install the permanent line-marking and guard rail across the project. This will result in further traffic changes and impacts along the Hume Motorway and Menangle Road.

These traffic changes will include but not limited to; both day and night lane closures and moving traffic to alternate sections of the road. This is so we can complete our work efficiently and safely.

We will update you on these traffic changes closer to the date.



Contact us



Project Infoline **1800 966 040**



springfarmparkway.community@georgiou.com.au



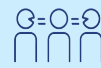
**PO Box 973,
Parramatta, NSW 2124**



Visit the online website go to **nswroads.work/sfp1**



For the latest traffic updates:
Call 132 701, visit livetraffic.com or download the app Live Traffic NSW



Interpreter service

For languages other than English call **131 450**
Arabic • Greek • Hindi • Mandarin • Vietnamese

طلب خدمة الترجمة الشفهية للغات غير الإنجليزية اتصل
بالرقم **131 450**

Για υπηρεσίες διερμηνείας σε άλλες γλώσσες εκτός από
τα Αγγλικά καλέστε το **131 450**

अंग्रेज़ी के अतिरिक्त अन्य भाषाओं के लिए दुभाषिया सेवा
131 450 पर कॉल करें

获取英语以外的其他语言口译协助服务可以致电**131 450**

Để có dịch vụ thông ngôn cho các ngôn ngữ khác
tiếng Anh, gọi số **131 450**

www.transport.nsw.gov.au/privacy-statement#Your_Privacy