

# Sydenham Bus Layover

Community  
Engagement Report

February 2024



# Acknowledgement of Country

Transport for NSW (Transport or TfNSW) acknowledges the Gadigal people of the Eora Nation, the traditional custodians of the land in which this project is located, and all peoples and nations.

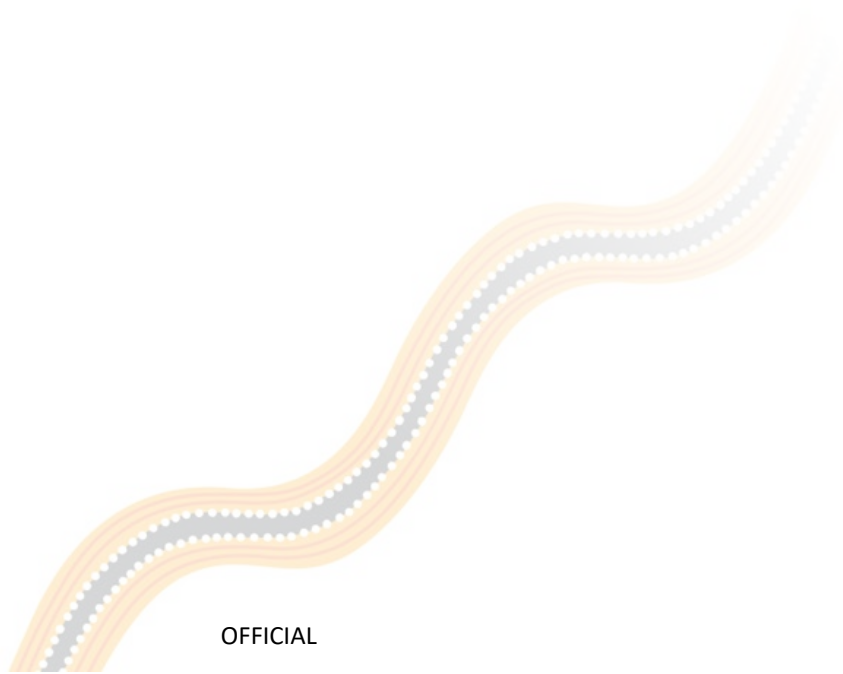
We pay our respects to Elders past and present and celebrate the diversity of Aboriginal people and their ongoing cultures and connections to the lands and waters of NSW.

Many of the transport routes we use today – from rail lines, to roads, to water crossings – follow the traditional song lines, trade routes and ceremonial paths in Country that our nation's First Peoples followed for tens of thousands of years.

Transport for NSW is committed to honouring Aboriginal peoples' cultural and spiritual connections to the land, waters and seas and their rich contribution to society.

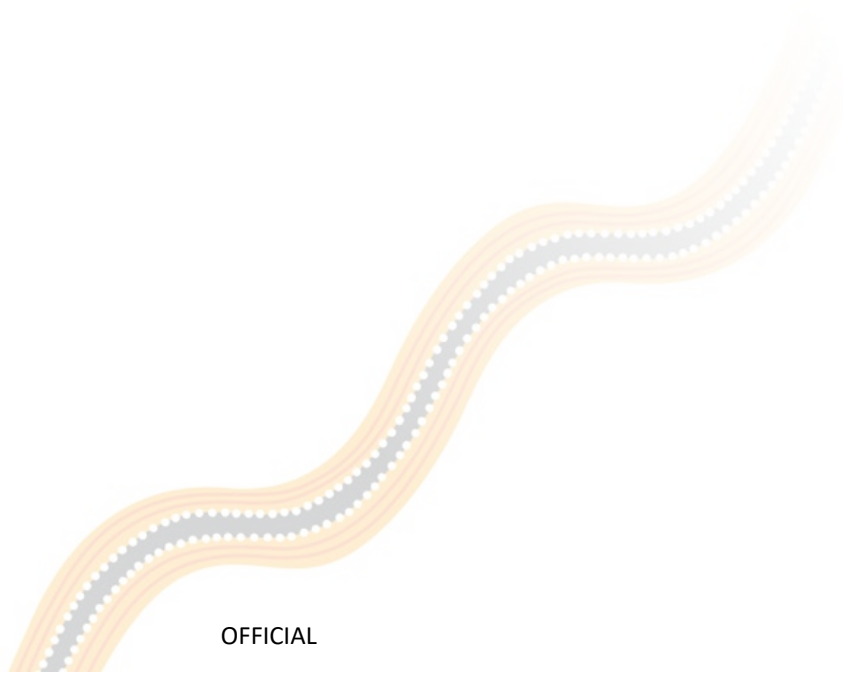
# Table of Contents

<b>1.</b>	<b>Executive Summary</b> .....	<b>5</b>
<b>2.</b>	<b>Purpose of this report</b> .....	<b>6</b>
2.1	Background.....	6
<b>3.</b>	<b>Project overview</b> .....	<b>7</b>
<b>4.</b>	<b>Engagement approach</b> .....	<b>9</b>
4.1	Engagement objectives.....	9
4.2	How engagement was done .....	9
<b>5.</b>	<b>Consultation summary/what we heard</b> .....	<b>10</b>
5.1	Overview.....	10
5.2	Engagement outcomes.....	18
5.3	Next steps.....	18
<b>6.</b>	<b>Appendix</b> .....	<b>19</b>
6.1	Community Update .....	19
6.2	Transport website.....	21
6.3	Your Say website.....	22
6.4	Inner West portal .....	23



# Document control

<b>Authors</b>	Transport for NSW
<b>Document owner</b>	Community and Place
<b>Approved by</b>	Director, Inner West Place
<b>Document number</b>	ISBN-978-1-922875-93-8
<b>Branch</b>	Community and Place
<b>Division</b>	Greater Sydney



# 1. Executive Summary

This report outlines the engagement that Transport for NSW (Transport) conducted with residents, businesses and key stakeholders on the proposed construction of Sydenham Bus Layover (bus layover, or the layover) at the corner of Railway Road and Burrows Avenue in Sydenham.

Transport is proposing a new bus layover facility as part of the Bus Priority Infrastructure Program (BPIP) to improve the reliability and efficiency of bus services while easing congestion for all road users.

The proposed bus layover would give bus drivers a place to park safely between services and improve bus travel times and service frequencies, increasing reliability for passengers. Sydenham requires a bus layover area to cater to the growing number of bus services in this area. At present, prior to picking up passengers, buses park along Burrows Avenue and Railway Road creating congestion and impacting bus operations.

The proposed bus layover facility at the corner of Railway Road and Burrows Avenue in Sydenham would:

- provide six bus parking spaces, a meal room and toilets for bus drivers
- create a path for pedestrians, passengers and the community to safely walk to and from Railway Road to Gleeson Avenue
- build a noise wall to separate the nearby homes from the new bus layover facility and minimise noise impacts from the bus layover facility
- install driveways for buses to enter from Railway Road and leave through Burrows Avenue
- remove parking spaces from Burrows Avenue to create enough space for buses to safely exit the layover area
- convert parallel car parking spaces on the northern side of Railway Road to angled parking, subject to approval from Inner West Council.

Community engagement began on Friday 24 November and ended on Friday 8 December 2023, with community notifications letterbox dropped and nearby properties doorknocked on Railway Road, Burrows Avenue and Wright Street. Feedback was invited in person, on the phone, via email and through the Sydenham bus layover project web page, the Transport Your Say website, and the NSW Government Have Your Say portal.

At the end of the engagement period, feedback was received from 18 individuals. The local community supported the proposed bus layover in principle but had concerns around parking and the proposed location.

Transport has considered all feedback received from the local community and has decided to progress development of the proposal with the following amendment:

- relocation of the pedestrian walkway between the noise wall and the bus layover, providing residential properties with more privacy. The noise wall will be set back half a metre from residential property boundaries to allow access for maintenance purposes.

Pending approval, construction is planned to start in early 2024. We will continue to inform the community and stakeholders as the project progresses.

## 2. Purpose of this report

### 2.1 Background

This report is regarding Transport's proposal for the Sydenham Bus Layover, community engagement and feedback to the proposal, as well as the next steps following the release of this report.

Sydenham Station is an important multimodal transport interchange. Buses servicing this major hub currently have insufficient space to terminate and layover between services. Delivery of the Sydney Metro project resulted in adjustments to the Bus Zone around Sydenham Station. Consequently, this has created increased bus congestion and is impacting bus operation, passengers and the safe movement of pedestrians and other road users.

Analyses of bus timetables show there are 306 bus arrivals at Sydenham Station per week that require some waiting time prior to scheduled departure times. The proposed bus layover facility will alleviate congestion, delays and reduce instances of buses 'double parking' on Railway Road and Burrows Avenue. This will assist in improving the on-time running of buses and local traffic flows on Railway Road and Burrows Avenue. Availability of this proposed bus layover will allow bus operators the opportunity to schedule more efficient bus movements and reduce dead (empty) running between Sydenham and Tempe on the Princes Highway, or other depots through inner-city streets.

The proposed bus layover facility will also provide a valuable operational asset to support assured delivery and increase efficiency of future bus services at this intermodal node between the Sydney Trains, Metro, Inner-West and Inner-East bus networks in alignment with Future Transport, the Greater Sydney Integrated Network Plan and the Greater Sydney Bus Network Strategy.

This report highlights the features of the proposed bus layover facility and details the community engagement conducted, and the project team's responses to feedback from local residents, businesses and other stakeholders.

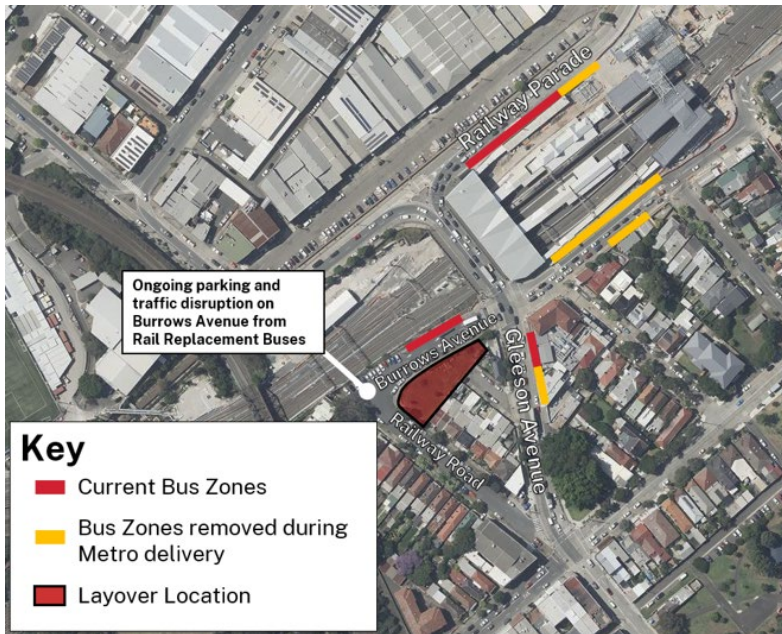
### 3. Project overview

Sydenham Station is an important multimodal transport interchange. Buses servicing this major hub don't have enough room to terminate and layover between services. This creates congestion on Railway Road, Burrows Avenue and Gleeson Avenue (a freight corridor to the Airport and Port Botany).

The limited bus layover options in the area result in buses idling in these streets, causing obstruction to pedestrians and cars, in active bus zones and surrounding streets. Safety issues, delays to passengers and bus services are currently being experienced as a result.

To resolve this issue, Transport for NSW proposes a bus layover facility at the corner of Railway Road and Burrows Avenue in Sydenham.

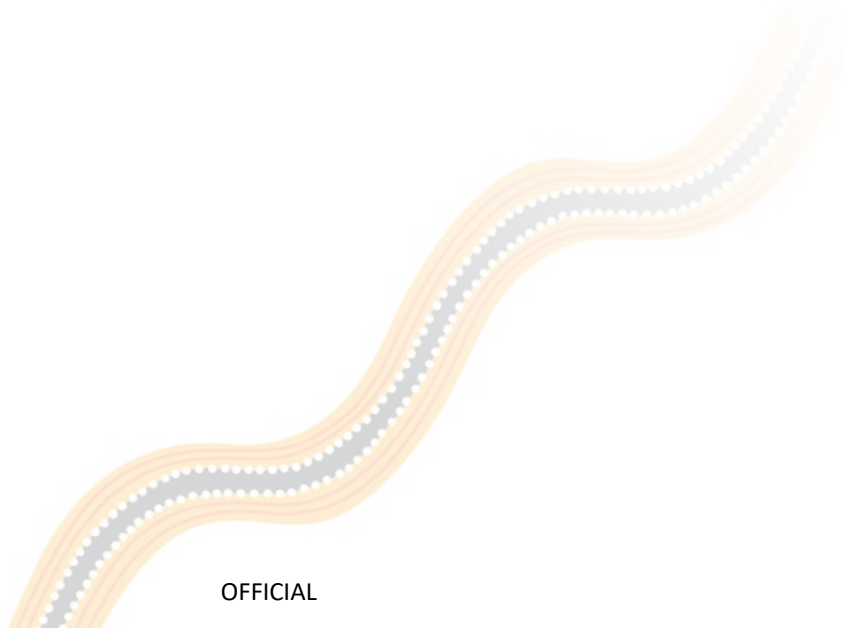
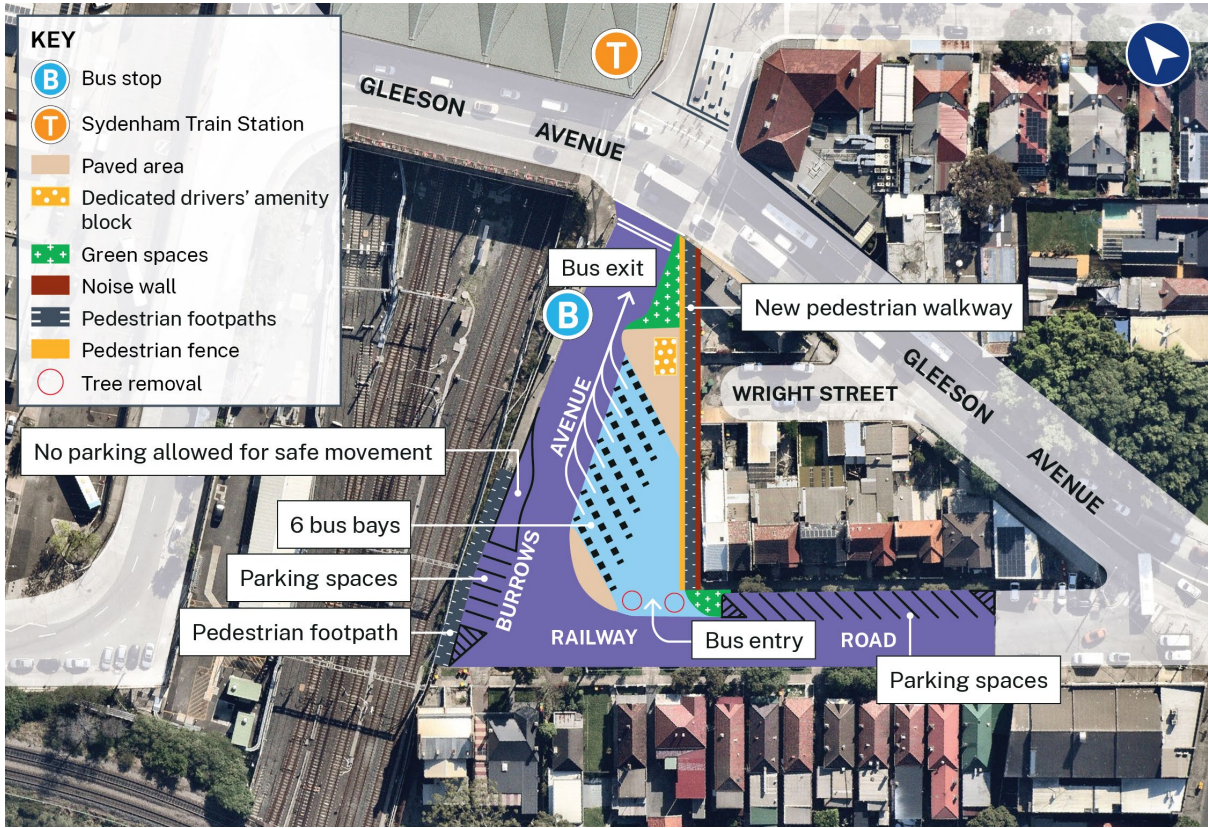
#### 3.1 Proposed bus layover location



#### 3.2 Original design proposal



### 3.2 Amended design proposal





## 4. Engagement approach

### 4.1 Engagement objectives

- To raise awareness of the Sydenham Bus Layover proposal
- Build preparedness and strategic readiness for changes in traffic and parking arrangements to the local area and seek comment, feedback, ideas, and suggestions on the proposal.
- Build a database of interested community members with whom we can continue to engage during the proposal’s development and delivery.
- Engage with relevant councils, businesses and other community groups.
- Inform the community, businesses and other stakeholders on the proposal.

### 4.2 How engagement was done

Transport used an ‘inform’ and ‘consult’ engagement approach for this project:

- ‘Inform’ the community, businesses and other stakeholders on the proposal
- ‘Consult’ on changes to parking on Railway Road and Burrows Avenue.

Community engagement occurred from Friday 24 November to Friday 8 December 2023.

Community members were invited to provide their feedback through the Transport project website, Your Say Transport website, the NSW Government Have Your Say portal, as well as via face-to-face conversations, email correspondence, doorknocks, and phone conversations via the project info line.

#### Community engagement activities

Channel	Description
Have your say community notification	<ul style="list-style-type: none"> <li>• 170 print notifications were letterbox dropped to residents and businesses across the proposal area</li> <li>• Email notifications to emergency services and local schools</li> <li>• Notifications and engagement with disability peak bodies through the Accessible Transport Advisory Committee</li> </ul>
Transport project web page	<ul style="list-style-type: none"> <li>• <a href="http://www.transport.nsw.gov.au/projects/current-projects/sydenham-bus-layover">www.transport.nsw.gov.au/projects/current-projects/sydenham-bus-layover</a></li> <li>• 122 unique visitors accessed the project page</li> </ul>
Your say Transport website	<ul style="list-style-type: none"> <li>• <a href="http://yoursay.transport.nsw.gov.au/sydenham-bus-layover">yoursay.transport.nsw.gov.au/sydenham-bus-layover</a></li> <li>• 132 unique visitors accessed the Your say page</li> </ul>
NSW Government Have Your Say portal	<ul style="list-style-type: none"> <li>• <a href="http://www.nsw.gov.au/have-your-say/sydenham-bus-layover">www.nsw.gov.au/have-your-say/sydenham-bus-layover</a></li> </ul>
Inner West Community Forum	<ul style="list-style-type: none"> <li>• The Sydenham Bus Layover proposal was featured in the Inner West December livestream on Wednesday 6 December, reminding community members to have their say</li> </ul>
Doorknocks	<ul style="list-style-type: none"> <li>• On Thursday 23 and Friday 24 November, 24 properties were doorknocked along Railway Road and Wright Street. Direct face to face engagement was carried out with 15 residents at their residential properties. Two businesses were informed and engaged along Railway Road.</li> </ul>
Key stakeholder briefings	<ul style="list-style-type: none"> <li>• Inner West Council briefed 7 June and 24 November 2023</li> <li>• Rail, Tram and Bus Union, and Transport Workers’ Union of NSW briefed 19 October 2023</li> </ul>

## 5. Consultation summary/what we heard

### 5.1 Overview

Transport received feedback from 18 residents and local businesses regarding our proposed bus layover facility at the corner of Railway Road and Burrows Avenue.

Feedback provided that is not related to this proposal has been passed on to the relevant agency for their consideration. Comments in relation to public transport improvements and bus services have been passed on to the relevant team within Transport.

Issue Category	Issue Raised	Response
Access	Access to the rail corridor from Burrows Avenue must be maintained	Sydney Trains requires access to their assets at all times for maintenance. Transport has reviewed the design to maintain access to the rail corridor from Burrows Avenue. A 'No Parking' sign will be installed in front of the railway gate on Burrows Avenue/Railway Road and a chevroned area will be marked at the access gate.
Alternative layover location	Transport should consider alternative layover locations, including Railway Parade, as well as the lower part of Railway Parade between Marrickville Road and Sydenham Road, which was the preferred option in 2018 as part of the Metro upgrade for Sydenham	<p>Transport appreciates the community's feedback on alternative locations for a bus layover facility. We have evaluated suggestions for other bus layover locations raised by the community. The alternative location on the lower part of Railway Parade between Marrickville Road and Sydenham Road, noted in the 2018 Planning Approval Consistency Assessment Form, relates to traffic changes as part of Sydney Metro's proposed projects. As this project is being delivered under the Bus Priority Infrastructure Program, the project objectives are separate to Sydney Metro. Consequently, the 2018 Planning Approval Consistency Assessment Form does not apply to this project.</p> <p>A bus layover requires adequate space to accommodate bus parking as well as entry and exit manoeuvres. There is insufficient space to locate a bus layover on upper Railway Parade.</p> <p>The proposed bus layover will provide a valuable operational asset to support assured delivery and increase efficiency of existing and future bus services at this intermodal node between the Sydney Trains, Metro, Inner-West and Inner-East bus networks. This project along with other layover projects align with the Future Transport, the Greater Sydney Integrated Network Plan and the Greater Sydney Bus Network Strategy.</p>

**TRANSPORT**

		Overall, Transport expects the project to benefit the community and wider bus network. The proposed bus layover is expected to improve local traffic flows, road safety, and on-time running by reducing congestion, delays, and reduce instances of buses double parking on Railway Road and Burrows Avenue.
Amenity	The proposed layover and noise wall will be an eyesore that will attract graffiti and reduce property value	<p>Transport will carry out a visual impact assessment to evaluate the landscape character and visual impact of the bus layover facility, including the building and noise wall and assess how it fits into the surrounding environment. The visual impact assessment will be included in the Review of Environmental Factors and mitigations will be provided where required. Transport will publish the Review of Environmental Factors report on the project website once completed.</p> <p>The final design will look at solutions for the surface of the noise wall as part of graffiti prevention. The project team will work with Transport’s maintenance teams to ensure appropriate maintenance for the bus layover, including the noise wall.</p>
	Will there be street lighting for the new footpath	Yes, lighting will be provided within the bus layover which will light the footpath. The lighting assessment for the bus layover has been performed in accordance with the Australian Standards, Lighting for Roads and Public Spaces (AS/NZS 1158.3.1.)
	Lighting for the new footpath needs to be directed away from residential properties	Transport understands residents’ concerns regarding potential light spillage from the construction of the proposed bus layover. This consideration has been included in the lighting assessment of the bus layover. Properties on the eastern boundary of the bus layover will be shielded from light spillage by the noise wall.
Bus Services	What hours will the buses use the layover?	Hours that buses will use the bus layover facility will be according to bus timetabling, dependent on public transport needs and bus services Transport needs to provide the community.
	Bus drivers need to turn off their engines when at the layover	Transit Systems will be the entity managing the buses and layover operation. Transport does not expect bus drivers to continue running their engines when parked and stationary.
	Noise from the layover	<p>To manage operational noise from the bus layover, Transport has taken a proactive approach and incorporated a noise wall in the design. The noise wall will be located between the layover and the adjacent properties to provide noise shielding from the layover.</p> <p>As part of the Review of Environmental Factors assessment for the project, a noise assessment of the operation of the layover will be undertaken. The results of the noise assessment will inform the height of the noise wall panels.</p> <p>Transport seeks to minimise noise impacts from the layover operation and along with the noise wall, will consider other safeguards and management measures identified in the assessment. Results of the noise</p>

		assessment and associated measures will be included in the Review of Environmental Factors report which will be published on the project website.
Construction	Noise impact on local residents during construction	Transport understands residents' concerns regarding any noise produced during the construction of the proposed bus layover construction. As part of the Review of Environmental Factors assessment for the project, a noise assessment of the construction of the layover will be undertaken. This will include an assessment of construction hours, construction activities and predicted noise impacts. Safeguards and management measures will be identified to minimise noise impacts. Transport will update the community on the measures to be implemented in the Review of Environmental Factors report which will be published on the project website.
Consultation	Two weeks of consultation is not sufficient	A two-week period is the standard timeframe to get feedback on projects of this scale. To ensure that residents and other stakeholders on Railway Road were reached, doorknocks were carried out on 23 and 24 November, resulting in direct face to face engagement with 15 residents and two businesses. Additionally, the project team accepted all feedback received after the closing date for submissions. We received feedback from 18 individuals in total.
	Why doesn't Transport post directly to local groups, such as Tempe 2020, on social media?	Transport is unable to post directly to community groups on social media as most group pages (like Tempe 2020) are set to private and not accessible by non-members.
Environment	Alternatives to tree removal should be considered	During the concept development phase, Transport sought to avoid or minimise tree removal by investigating alternative designs. Unfortunately, as the project site is constrained due to the limited available space, two mature trees located at the proposed layover entry point need to be removed. The two trees proposed to be removed as part of the project will be replaced with four trees, to be planted within the Inner West local government area (subject to Council approval). Additionally, the project has allocated space within the northern section of the site for a turfed area.
	Why was the DA for removal of two Melaleucas (paper barks) not advertised?	The approval process for removal of the paperbark trees did not involve a development application (DA). Transport has consulted with Inner West Council and our environmental team, and the trees will be removed in accordance with Transport guidelines, which include offsetting the removal on a two for one basis.
	Native Vegetation should be used for this project	Transport prefers to use native vegetation for landscaping on projects, particularly when it is endemic to the area. More details on the species of trees to be planted as part of the proposed bus layover will be released in the Review of Environmental Factors report.

	More trees should be planted as part of the proposal	Transport will be offsetting the removal of trees on a two for one basis. The two trees proposed to be removed as part of the project will be replaced with four trees, to be planted within the Inner West Council local government area (subject to Council approval.) The Inner West Council will manage the tree planting locations.
Noise wall	How high would the proposed noise wall be?	The results of the noise assessment for the proposed bus layover facility will inform the height of the noise wall along with the visual impact assessment. The results will be included in the Review of Environmental Factors report which will be published on the project website.
	What would be the impact on light to adjoining properties from the noise wall?	To address residents' concerns regarding the impact on natural lighting, Transport will perform a lighting assessment of the bus layover. This will be completed once the proposed design for the noise wall has been developed and will form part of Inner West Council's lighting review to assess the impact to natural lighting from the bus layover project. The results will be included in the Review of Environmental Factors report which will be published on the project website.
	The noise wall will not do enough to mitigate noise from the layover	As part of the Review of Environmental Factors assessment for the project, a noise assessment of the operation of the bus layover will be undertaken. The results of the noise assessment will inform the noise wall panel height. Transport seeks to minimise noise impacts from the layover operation and along with the noise wall, will consider other safeguards and management measures identified in the assessment. Results of the noise assessment and associated measures will be included in the Review of Environmental Factors report which will be published on the project website.
Parking	Railway Road is used for parking buses for rail replacement services, would a permanent layover replace this practice?	The proposed bus layover is a permanent facility and will be used by regular bus services as well as by rail replacement services. The layover is expected to improve local traffic flows, road safety, and on-time running by reducing congestion, delays, and instances of buses 'double parking' on Railway Road and Burrows Avenue.  We do not expect to exceed six buses at the layover at any given time.
	There is not enough parking in the street and angled parking does not provide enough spaces to offset the loss of spaces, negatively impacting residents and businesses	Transport has undertaken a parking assessment and has worked to optimise the parking spaces in Railway Road and Burrows Avenue. The introduction of angled parking provides an additional five spaces to the existing eight spaces in the section along Railway Road between 105 and 117 Railway Road.  Transport has also carried out a review of the Sydenham residential parking permit scheme and available parking spaces post-project delivery. There are sufficient available parking spaces within the project scope area (including Wright Street) to accommodate the permit allocation available for properties along Railway Road.

	Angled parking looks the wrong way	The proposed angled parking is in accordance with Australian Standard 2890 Parking Facilities.
	Angled parking would narrow the road and increase the risk of crashes	The introduction of angled parking has historically been shown to reduce vehicle speeds which creates a safer road environment. Angled parking will also not adversely affect traffic flows along Railway Road.
	Will parking on the southern side of Railway Road be modified or removed?	Parking spaces on the southern side of Railway Road will not be modified or removed as part of this project scope. The parking changes are on the northern side of Railway Road and on Burrows Avenue.
	Why is angled parking on the right side of Railway Road and not the left?	The angled parking is proposed for the northern side of Railway Road to accommodate bus turning manoeuvres into the layover.
	What is the net change in parking spaces?	<p>The parking changes to accommodate the bus layover will result in a net reduction of 12 parking spaces.</p> <p>For Railway Road on the southern side, there is no change to the existing 23 parking spaces. On the northern side there are currently eight parking spaces which will increase to 13 parking spaces with the introduction of angled parking.</p> <p>On the western side of Burrows Avenue, 12 parking spaces will be reduced to six. The 11 informal parking opportunities in the right turn pocket on the eastern side of Burrows Avenue will be removed as that area forms the layover exit for the buses.</p> <p>Transport has undertaken a parking assessment to optimise parking spaces. Transport has also carried out an assessment of the Sydenham residential parking permit scheme and available parking spaces post-project delivery. The results of the assessments indicate that there are sufficient available parking spaces within the project scope area (including Wright Street) to accommodate the permit allocation available for properties along Railway Road.</p>
Pedestrian access	Will the pedestrian walkway next to the layover integrate with small Wright Street?	The proposed footpath will be located between the noise wall and the proposed bus layover facility, noting the walkway will be separated from the layover with a pedestrian fence. This means that Wright Street will not be accessible from the footpath due to the proposed noise wall. This is to ensure privacy and effective noise mitigation for adjacent properties on the eastern boundary.
	The intersection of Gleeson and Burrows	The current traffic signal phasing of Gleeson Avenue and Burrows Avenue has been reviewed as part of project development and Transport has determined that no changes are required.

	Avenue should have pedestrian priority	
	Footpath on Burrows Avenue should be widened	<p>Transport has assessed the existing pedestrian infrastructure and determined there is sufficient existing pedestrian infrastructure on the western side of Burrows Avenue (including footpath width) to enable safe pedestrian movements to the Burrows Avenue bus stop (Stop ID: 204421) and Sydenham Station.</p> <p>The footpath on the eastern side of Burrows Avenue on the boundary of the bus layover will be permanently removed to enable safe and efficient bus exit from the layover. The new walkway will provide pedestrian a safe route between Gleeson Avenue and Railway Road.</p>
	The proposed walkway will create noise next to properties	<p>Transport has updated the design, the proposed walkway will now be located between the noise wall and the proposed bus layover, noting the walkway will be separated from the layover with a pedestrian fence. The noise wall will provide noise shielding to adjacent properties from pedestrian traffic.</p>
	Commuters should not need to cross Gleeson Avenue to get to the Burrows Avenue bus stop	<p>There is sufficient existing pedestrian infrastructure to facilitate safe pedestrian movements between Sydenham Station and Burrows Avenue bus stop (Stop ID: 204421). There are existing signalised pedestrian crossings across Burrows Avenue and Gleeson Avenue. Transport does not have any plan to move bus stops within and outside the proposal area.</p>
	The proposed walkway will make travel to the bus stop on Burrows Avenue from Railway Road longer	<p>The footpath on the eastern side of Burrows Avenue on the boundary of the bus layover will be permanently removed to enable safe and efficient bus exit from the layover. Pedestrians would be able to use a new walkway between Gleeson Avenue and Railway Road. Along with the existing footpath to Burrows Avenue along Railway Road, the new walkway will provide an alternative safe option for pedestrians.</p>
Proposed layover	This area was previously proposed as part of the Metro but did not go ahead, what changed?	<p>The 2018 Planning Approval Consistency Assessment Form relates to traffic changes as part of Sydney Metro's proposed projects. The proposed bus layover facility is associated with the Transport's Bus Priority Infrastructure Program which supports the overall Future Transport Strategy.</p>
	Why build the layover now when the area is expected to be rezoned and redeveloped after the Bankstown Line Closure?	<p>The proposed bus layover will provide a valuable operational asset to increase efficiency of existing and future bus services at this intermodal node between the Sydney Trains, Metro, Inner-West and Inner-East bus networks in alignment with Future Transport, the Greater Sydney Integrated Network Plan and the Greater Sydney Bus Network Strategy.</p>
	The cost outweighs the benefits	<p>Transport has performed a benefits assessment as part of the proposal. The bus layover will provide bus drivers a place to park safely between services, improve operating efficiencies and increase reliability for</p>

**TRANSPORT**

		passengers, leading to reduced operating costs. The assessment concluded over the lifetime of the project, the benefits provided by the layover are expected to exceed the project capital cost.
	Existing stormwater pipe at the location of the proposed layover has caused flooding to adjacent properties	Transport will liaise with Sydney Water and Inner West Council to manage storm water drainage at the proposed site.
	Why not build a toilet inside the station instead of at the layover	Sydenham Station already has toilet facilities with wheelchair accessibility and baby change tables. The purpose of the amenity block at the layover is to enable bus drivers to access amenities between shifts as efficiently as possible without the need to walk to Sydenham Station.
Safety	Will drivers reverse into and out of the facility?	The bus layover has been designed to allow buses to enter and exit the facility in forward motion. Buses will enter the layover from Railway Road and exit onto Burrows Avenue.
	Bus drivers would need to cross the road from the bus stop to use the amenity block	Bus operators laying over in Burrows Avenue will need to cross Burrows Avenue to access toilet and meal room facilities at the bus layover.
	How will buses enter and exit the layover facility safely?	The bus layover has been designed with the safety of pedestrians, road users and passengers as the priority. All buses will enter and exit the layover in a forward motion. A new pedestrian walkway between Gleeson Avenue and Railway Road and the existing walkway on the north side of Burrows Avenue will separate pedestrians from bus movements.
Traffic	The layover will create more traffic on Railway Road and Burrows Avenue, creating congestion and noise	Transport expects the project to benefit the community and wider bus network. The proposed bus layover facility is expected to improve local traffic flows, road safety, and bus timetable reliability by reducing congestion, delays, and reducing instances of buses 'double parking' on Railway Road and Burrows Avenue.  To manage noise to adjacent properties, the proposal includes the construction of a noise wall. The noise wall will run along the eastern boundary of the bus layover and will provide significant noise shielding.
	Will the configuration of lanes at the Intersection of Gleeson Avenue and Burrows Avenue change as part of this proposal?	The configuration of lanes at the Gleeson Avenue and Burrows Avenue intersection will not change as part of this project.



Not included as part of this project	Introduce a right hand turn signal phase from Gleeson Avenue into Unwins Bridge Road	The Gleeson Avenue and Unwins Bridge Road intersection is outside the scope of the proposed bus layover facility. Transport has shared this feedback with the relevant team for investigation.
	The pedestrian zebra crossing on Burrows Avenue, adjacent to the train station, needs to be raised into a wombat crossing	The Burrows Avenue zebra crossing to Sydenham Station is outside the scope of this proposal. Transport has shared feedback with the relevant team for investigation.
	Transport should build a commuter carpark next to Sydenham Station	Commuter car parks are delivered under Transport's Commuter Car Park Program. At present there are no plans to build parking facilities near Sydenham Station. Due to the location of the station, particularly its proximity to the Sydney CBD, commuters are not expected to drive to the station by car.

## 5.2 Engagement outcomes

Transport would like to thank everyone who took the time to consider the proposal and provide feedback. Transport received feedback from 18 residents and local businesses as well as other stakeholders regarding the proposed bus layover facility at the corner of Railway Road and Burrows Avenue.

Key areas of concern were parking and the proposed location.

Transport has considered all feedback received from the local community and has decided to progress development of the proposal with the following amendment:

- Relocating the pedestrian walkway between the noise wall and the bus layover, providing residential properties with more privacy. The noise wall will be set back half a metre from residential property boundaries to access for maintenance purposes.

Transport notes the impact on parking in the area. We encourage parking on properties where possible, parking on Unwins Bridge Road, Wright Street and surrounding local streets.

Feedback received on the noise wall and bus driver amenities will be considered as the design process progresses.

## 5.3 Next steps

- Inform the community of progress on the proposed bus layover facility
- Publish the Review of Environmental Factors report on the project web page
- Endorsement of the proposed bus layover and parking changes by Inner West Council
- Notify community members and start construction work on the bus layover.

## 6. Appendix

### 6.1 Community Update

#### Transport for NSW

# Sydenham Bus Layover Have Your Say

November 2023



The NSW Government is proposing a new bus layover facility as part of the Bus Priority Infrastructure Program to improve the reliability and efficiency of bus services, while easing congestion for all road users.

Sydenham requires a bus layover area to cater to the growing number of buses services in this area. Prior to picking up passengers, buses currently park along Burrows Avenue creating congestion and safety issues for pedestrians and drivers.

Transport is proposing a bus layover area at the corner of Railway Road and Burrows Avenue. This would give drivers a place to park safely between services and improve bus travel times and service frequencies, increasing reliability for passengers.

#### Key features

The buses would enter from Railway Road and exit into Burrows Avenue at the proposed bus layover which would have:

- six bus parking spaces
- a dedicated drivers' amenity block with a lunch room and toilets
- a noise wall between residential properties and the layover facility
- landscaping.

#### Pedestrian walkway

Transport would also create a separate pedestrian walkway to provide the public with a direct pathway to Sydenham Station.

#### Benefits

- Bus layover with space for six buses and an amenities block for drivers, freeing up the streets and improving traffic flow
- Improved bus on time running and reliability

- New, separated and safer walkway for pedestrians and residents to get to Sydenham Station
- Improved safety and connectivity for pedestrians, commuters and drivers
- Reduced emissions from buses idling and circling between services.

#### Expected impacts

- Some loss of parking will occur as part of this project; existing street parking on Railway Road will be converted to angled parking to provide additional parking spaces
- Two trees in the nature strip on Railway Road would need to be removed to create the entry into the layover.

If approved construction is expected to take up to five months to complete, weather permitting.

We have included a map on the reverse side of this notification.

#### FAQs

##### Will any car spaces be lost?

Parking loss would be limited with the creation of angled parking on Railway Road, replacing some of the spaces required for the layover space.

##### Will access change for residents?

Yes – during pavement and footpath work on Burrows Avenue and when the proposed entry and exit points are being established, but these changes would be temporary.

Transport for NSW acknowledges the Gadigal people of the Eora Nation as the Traditional Custodians of the lands on which we work and pays respect to Elders past and present.

## Proposed bus layover facility



Image Credit: Aerial Photography Nearmap

### Have your say

Transport invites your feedback on the proposed bus layover at the corner of Railway Road and Burrows Avenue in Sydenham.

Have your say by **Friday 8 December 2023** at [yoursay.transport.nsw.gov.au/sydenham-bus-layover](https://yoursay.transport.nsw.gov.au/sydenham-bus-layover)

You can also email [projects@transport.nsw.gov.au](mailto:projects@transport.nsw.gov.au) or call us on **1800 684 490**.

### Contact us



Project Infoline **1800 684 490**



[projects@transport.nsw.gov.au](mailto:projects@transport.nsw.gov.au)



Have your say at [yoursay.transport.nsw.gov.au/sydenham-bus-layover](https://yoursay.transport.nsw.gov.au/sydenham-bus-layover)



For the latest traffic updates: Call 132 701, visit [livetraffic.com](https://www.livetraffic.com) or download the app Live Traffic NSW



**Interpreter service**

For languages other than English call **131 450**  
Arabic • Greek • Hindi • Mandarin • Vietnamese

طلب خدمة الترجمة الشفهية للغات غير الإنجليزية اتصل بالرقم **131 450**

Για υπηρεσίες διερμηνείας σε άλλες γλώσσες εκτός από τα Αγγλικά καλέστε το **131 450**

अंग्रेज़ी के अतिरिक्त अन्य भाषाओं के लिए दुभाषिया सेवा **131 450** पर कॉल करें

获取英语以外的其他语言口译协助服务可以致电**131 450**

Để có dịch vụ thông ngôn cho các ngôn ngữ khác tiếng Anh, gọi số **131 450**

[www.transport.nsw.gov.au/privacy-statement#Your\\_Privacy](https://www.transport.nsw.gov.au/privacy-statement#Your_Privacy)

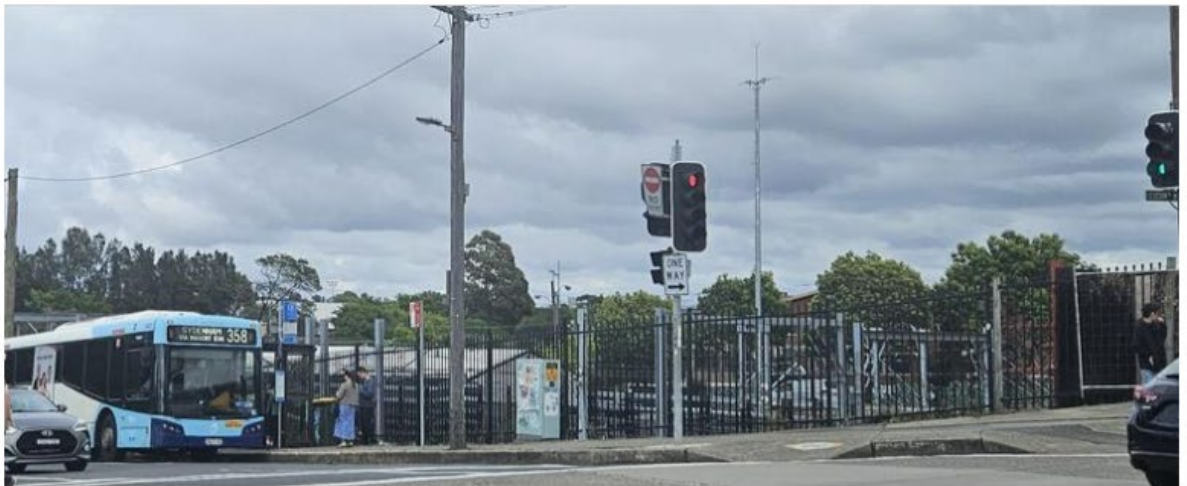
## 6.2 Transport website

Home / Projects / Current Projects / Sydenham Bus Layover

# Sydenham Bus Layover

Reviewed 28 Nov 2023

The NSW Government is funding a new bus layover facility as part of the Bus Priority Infrastructure Program to improve the reliability and efficiency of bus services, while easing congestion for all road users.



Sydenham bus layover



## Latest news

### November 2023 – Have Your Say



Transport invites your feedback on the proposed bus layover at the corner of Railway Road and Burrows Avenue in Sydenham.

Have your say by **Friday 8 December 2023** at **the consultation website**.

Please view or download the **November 2023 Have Your Say (PDF, 1.19 MB)** for more information.

<https://www.transport.nsw.gov.au/projects/current-projects/sydenham-bus-layover>

## 6.3 Your Say website

### Sydenham Bus Layover

The NSW Government is funding a new bus layover facility as part of the Bus Priority Infrastructure Program to improve the reliability and efficiency of bus services, while easing congestion for all road users.

Sydenham requires a bus layover area to cater to the growing number of buses services in this area. Prior to picking up passengers, buses currently park along Burrows Avenue which creates congestion and safety issues for pedestrians and drivers.

Transport is proposing a bus layover area at the corner of Railway Road and Burrows Avenue. This would give drivers a place to park safely between services [Continue reading](#)

Documents

sydenham-bus-layover-hys-nov-23.pdf  
(1.19 MB) (pdf)

**REGISTER** for project updates

**SURVEY**

### Sydenham Bus Layover - Have Your Say

We are seeking feedback on the proposal and you can have your say by Friday 8 December



<https://yoursay.transport.nsw.gov.au/sydenham-bus-layover>

# 6.4 Inner West portal

**NSW**

PROJECTS MAP HOME ASK A QUESTION NEWS AND UPDATES COMMUNITY CATCH UP LIBRARY ABOUT SUBSCRIBE

### Sydenham Bus Layover

**Road Safety and Public Transport Improvements**

Sydenham, Tempe, Marrickville  
Due for completion mid 2024

We're proposing a bus layover area at the corner of Railway Road and Burrows Avenue.

This facility would provide six bus parking spaces, a dedicated drivers' amenity block, a noise wall between residential properties and the facility, a separate pedestrian walkway to offer passengers a pathway to Sydenham Station, and landscaping.

It aims to offer drivers a safe parking space between services, enhance bus travel times and service frequencies, and improve reliability for passengers.

We're inviting our community to have their say on the proposal. Click below to learn more and submit your feedback by December 8 2023.

[VIEW PROJECT WEBSITE](#)

Some other projects close to your selection.

<https://caportal.com.au/tfsw/inner-west>

