

Utility investigations

Allen Street and Harris Street intersection, Pyrmont

Western Distributor Road Network Improvements

June 2024



The Western Distributor connects Wangal and Gadigal Country over Rozelle Bay. Transport for NSW acknowledges the Dharug and Eora lands and pays respect to Elders past and present.

The Western Distributor Road Network Improvements project will improve safety and efficiency at key traffic bottlenecks or pinch points on the Western Distributor and reduce the flow on effect of incidents on surrounding roads.

What work are we doing?

We will conduct utility investigations at the Allen Street and Harris Street intersection in Pyrmont, as part of the intersection upgrade. Work will involve:

- locating services and marking out utility locations, including saw cutting and potholing
- opening services pits by non-mechanical means
- restoration of pavement around pot holing.

When will we be working

The work will be undertaken over **two night shifts** between **Wednesday 26 June and Thursday 4 July** weather permitting.

Work hours will be between 8.00pm and 5.00am from Sunday to Thursday.

Evening work will minimise traffic disruptions and provide a safe work environment for our construction crews and road users.

What will this mean for you?

Our work may be noisy at times, and we will do everything we can to minimise impacts, including completing the noisier tasks by midnight.

You may also notice:

- workers and vehicles in the area
- traffic controllers and signage
- reduced speed limits
- footpath closures
- noise from machinery and equipment
- changes to parking.

Parking and traffic changes

There will be minor changes to parking arrangements while we carry out this work. These include:

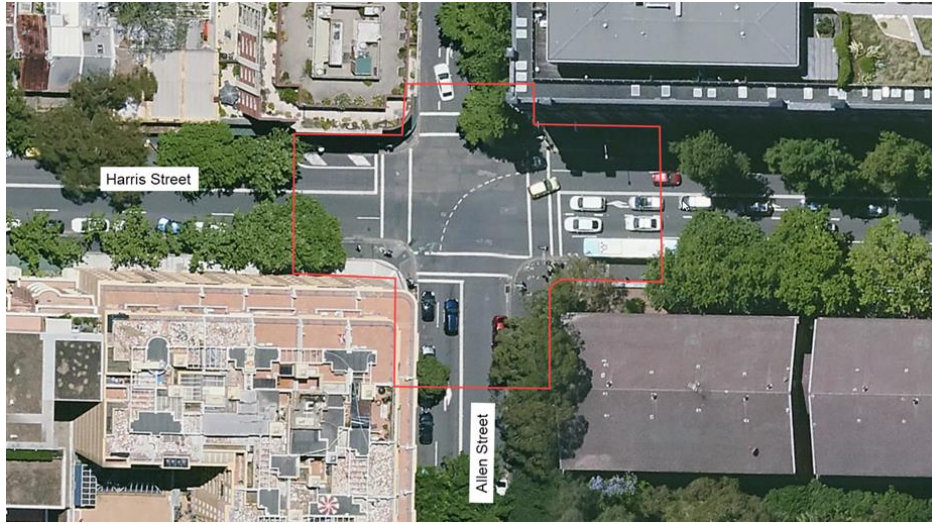
- temporary traffic changes while workers are on site
- traffic control measures including single lane closures
- 40km/h speed limits within the work zone.

To ensure safety of community and workers please follow speed limits, signage, and traffic control directions.

Further information

For the latest traffic updates visit [livetraffic.com](https://www.livetraffic.com), download the Live Traffic NSW App, or call **13 27 01**.

Location of work area



Staying up to date

The NSW Government is building and managing a transport network to support the growth and development of Greater Sydney. Projects like WestConnex, Western Harbour Tunnel and the M6 will become the backbone of our network to move people, goods, and services across Sydney.

Around 130,000 vehicles use the Western Distributor each day, making it one of Sydney's busiest transport corridors.

Over the coming months Transport will be making incremental improvements to modernise and upgrade this section of the network and futureproof the Western Distributor and Anzac Bridge as a safe and reliable connection for people travelling throughout Sydney.

To find out more visit nswroads.work/wdc or for project updates visit [Western Distributor Road Network Improvements](#) | [Transport for NSW](#)

Click on the QR code to register to receive updates:



Contact us



Project Infoline **1800 684 490**
24-hour Construction Response Line
1800 775 465



westerndistributor@transport.nsw.gov.au



nswroads.work/wdc



Transport for NSW, PO Box 973
Parramatta, NSW 2124



Visit the Inner West online portal
nswroads.work/innerwest



Interpreter service

For languages other than English call 131 450
Arabic • Greek • Hindi • Mandarin • Vietnamese

لطلب خدمة الترجمة الشفهية للغات غير الإنجليزية اتصل
بالرقم **131 450**

Για υπηρεσίες διερμηνείας σε άλλες γλώσσες εκτός από
τα Αγγλικά καλέστε το **131 450**

अंग्रेज़ी के अतिरिक्त अन्य भाषाओं के लिए दुभाषिया सेवा
131 450 पर कॉल करें

获取英语以外的其他语言口译协助服务可以致电**131 450**

Để có dịch vụ thông ngôn cho các ngôn ngữ khác tiếng
Anh, gọi số **131 450**