

# Blackheath track maintenance

From Thursday 4 September to Monday 8 September 2025

## What we are doing

To improve service reliability, Sydney Trains will complete maintenance works at Blackheath from Thursday 4 September to Monday 8 September.

Work activities include rerailing and asphalt works.

We understand this work may have an impact on you and we appreciate your patience and understanding.

## How this affects you

### Noise

- These works may create additional noise during the day and at night.
- **Work will take place from 6am Thursday 4 September to 6pm Monday 8 September.**
- Equipment may be delivered to the worksite outside the above times. Some deliveries may occur at night due to daytime travel restrictions on large vehicles.
- Finishing works including the removal of equipment may take place beyond the dates stated above.

### Traffic and parking

- **Bundarra Steet level crossing will be closed from 4am Saturday 6 September to 5am Monday 8 September.**
- **Motorists will be directed to an alternative route via Station Street Bridge, north of Blackheath Station. Pedestrians can cross using the Blackheath Station Footbridge.**
- We will park our vehicles inside the rail corridor where possible. Some street parking may be unavailable during the works.
- Traffic controllers will be on duty to assist motorists and pedestrians throughout the duration of the works.

**We apologise for any inconvenience and thank you for your cooperation during these essential works.**



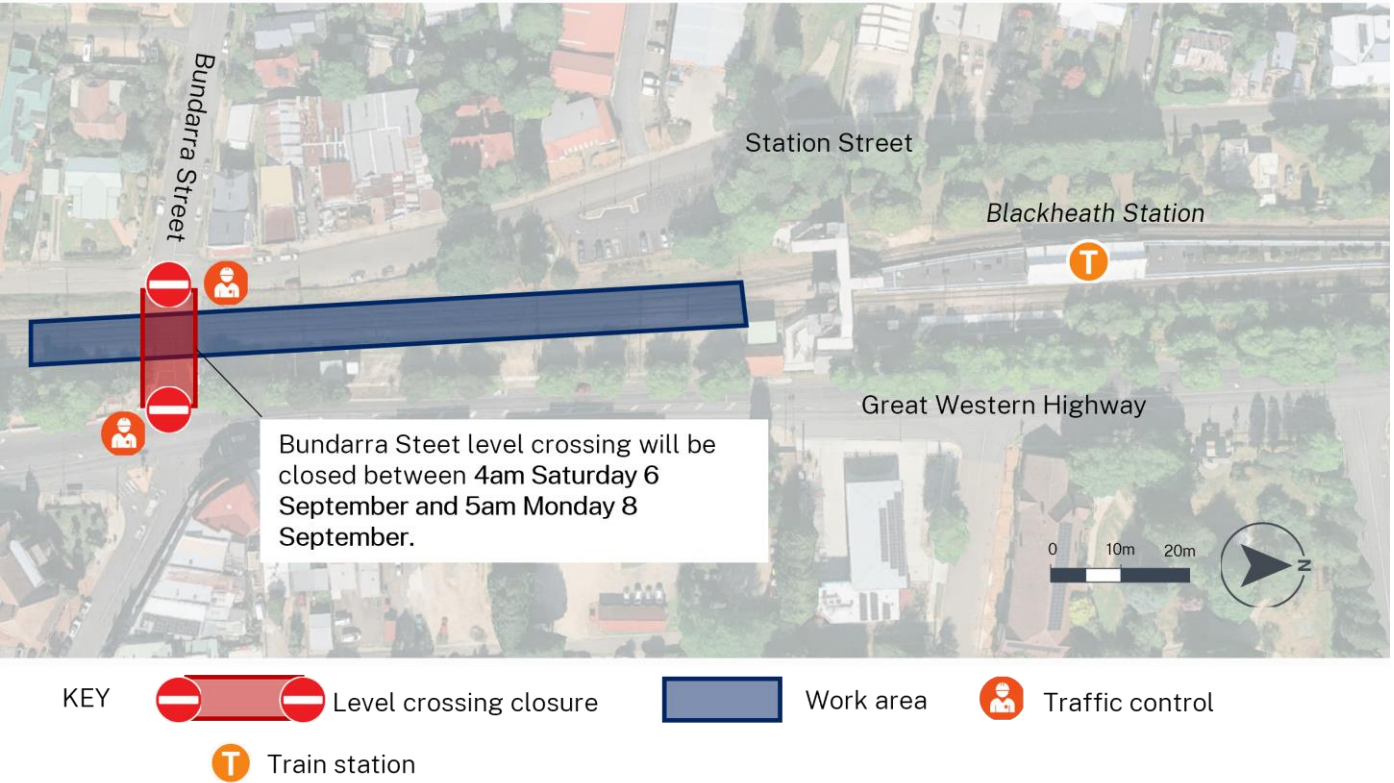
## Contact us

For upcoming work [transport.nsw.gov.au/sydtraincommunity](https://transport.nsw.gov.au/sydtraincommunity)

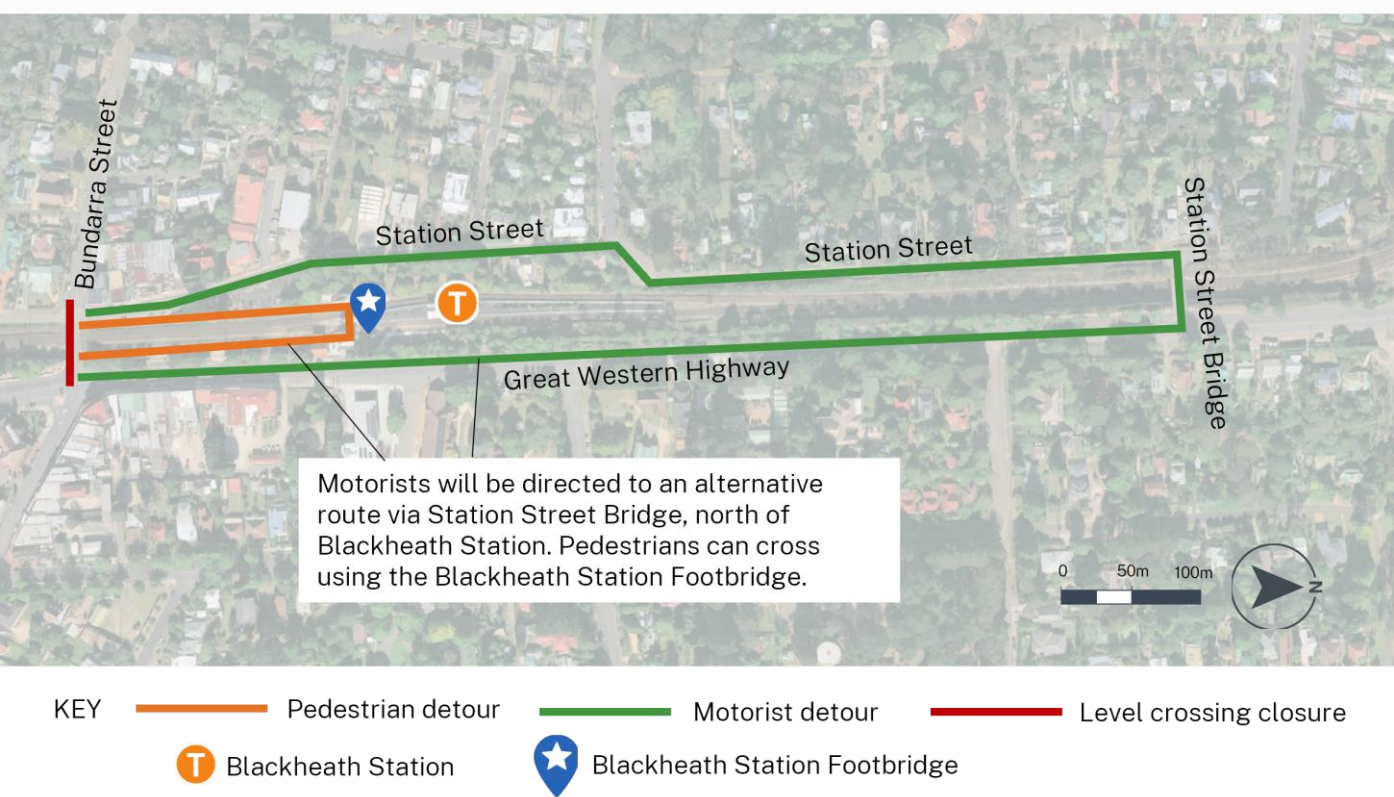
To report environmental concerns (24 hours) 1300 656 999

# Location of work

Location of work and level crossing closure



Pedestrian and motorist detours



Transport for NSW acknowledges the Traditional Custodians of the lands on which we work and pays respect to Elders past and present.

