

Community Notification

Blaxland, Warrimoo, Valley Heights, Springwood, Faulconbridge and Linden Stations

May and June 2025



Transport for NSW acknowledges the Traditional Custodians of the lands on which we work and pays respect to Elders past and present.

The NSW Government is delivering new, state-of-the-art intercity and regional trains.

The new trains will provide new safety features, improved accessibility, facilities and reliability for passengers who travel on our intercity and regional networks.

To accommodate the new intercity (Mariyung) fleet, we need to upgrade and modify some existing rail infrastructure at various locations across the rail network.

What work are we doing?

In May and June, work within the rail corridor includes:

- installing underground cable route at Springwood Station
- installing and commissioning car markers and balise markers
- removing outdated car markers
- minor vegetation trimming
- investigations on existing utilities and assets.

Equipment and machinery to be used:

- generator
- vacuum truck
- tipper truck
- temporary lighting towers
- hand tools including drills, bars, shovels, jackhammers, and concrete mixing tools
- electrical testing equipment.

When and where we'll be working

From **Monday 5 May to Friday 6 June 2025**, we will be working at and around **Blaxland, Warrimoo, Valley Heights, Springwood, Faulconbridge and Linden Stations** during standard construction hours, from **7am to 6pm Monday to Friday** and **8am to 1pm on Saturdays**.

Out of hours work

To minimise disruption to the rail network and for the safety of staff and customers, some work is required to take place outside of standard construction hours, from **5am on Saturday 31 May to 5am Monday 2 June 2025**, during scheduled Sydney Trains trackwork.

Temporary parking impacts

From **6am Monday 5 May to 6pm Wednesday 7 May 2025**, approximately six car spaces will be unavailable in the commuter car park at **Springwood Station**. These spaces are required to enable construction work to be carried out safely. During this time, please do not park in the shaded blue area shown on the map overleaf.

What will this mean for you?

You may notice:

- workers and vehicles
- lighting from temporary lighting towers
- moderate noise from construction activities.

Managing our impacts

We will take steps to reduce noise and impacts on the community and the environment.

This includes and is not limited to:

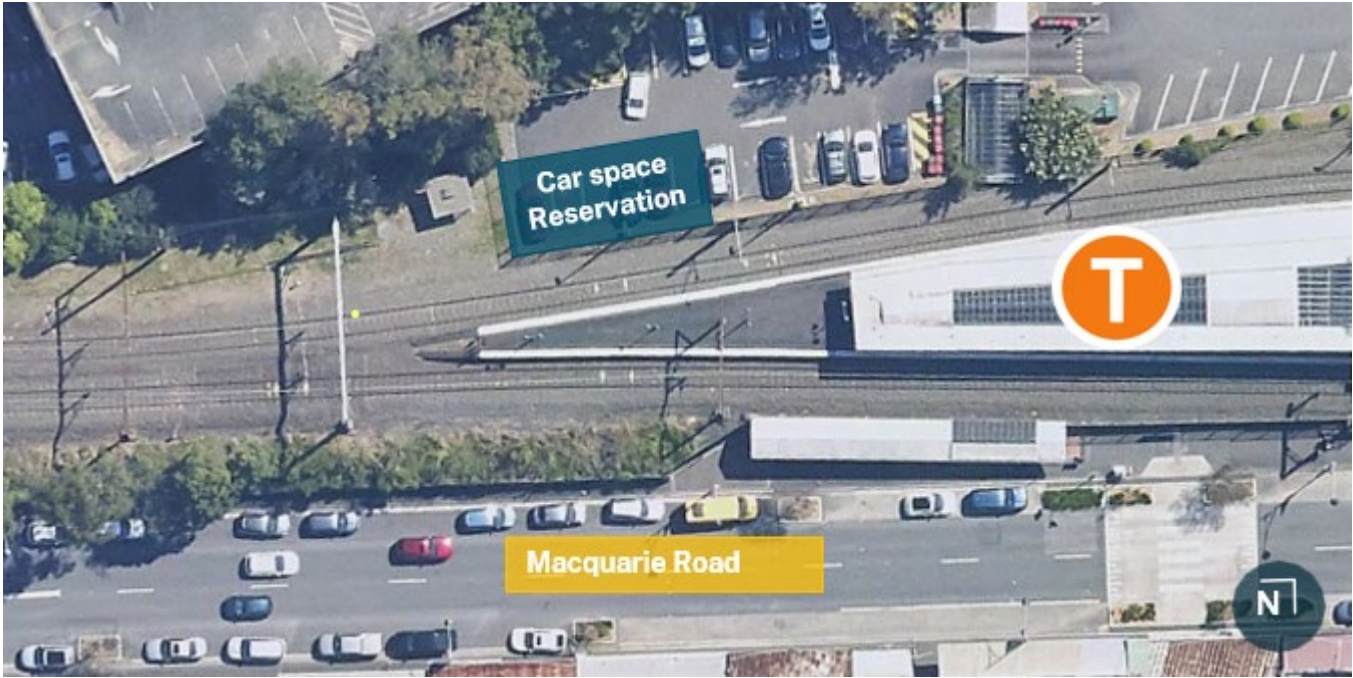
- using non-tonal reversing beepers
- instructing workers to keep noise to a minimum, where possible.

More information

Working closely with the local community is a priority for Transport for NSW. We will update you regularly on our website with information about upcoming work.

If you have questions or would like more information about the Rail Infrastructure Upgrades project, please contact us using the details below.

Map of temporary parking impacts at Springwood Station



Contact us



Project Infoline **1800 684 490**
24-hour Construction Response Line
1800 775 465



projects@transport.nsw.gov.au



www.transport.nsw.gov.au/projects/current-projects/rail-infrastructure-upgrades-project



For the latest Train service updates:
Call Transport Info on **131 500** or visit
<https://transportnsw.info/>



Interpreter service

For languages other than English call 131 450
Arabic • Greek • Hindi • Mandarin • Vietnamese

لطلب خدمة الترجمة الشفهية للغات غير الإنجليزية اتصل
بالرقم **131 450**

Για υπηρεσίες διερμηνείας σε άλλες γλώσσες εκτός από
τα Αγγλικά καλέστε το **131 450**

अंग्रेज़ी के अतिरिक्त अन्य भाषाओं के लिए दुभाषिया सेवा
131 450 पर कॉल करें

获取英语以外的其他语言口译协助服务可以致电**131 450**

Để có dịch vụ thông ngôn cho các ngôn ngữ khác tiếng
Anh, gọi số **131 450**

www.transport.nsw.gov.au/privacy-statement#Your_Privacy