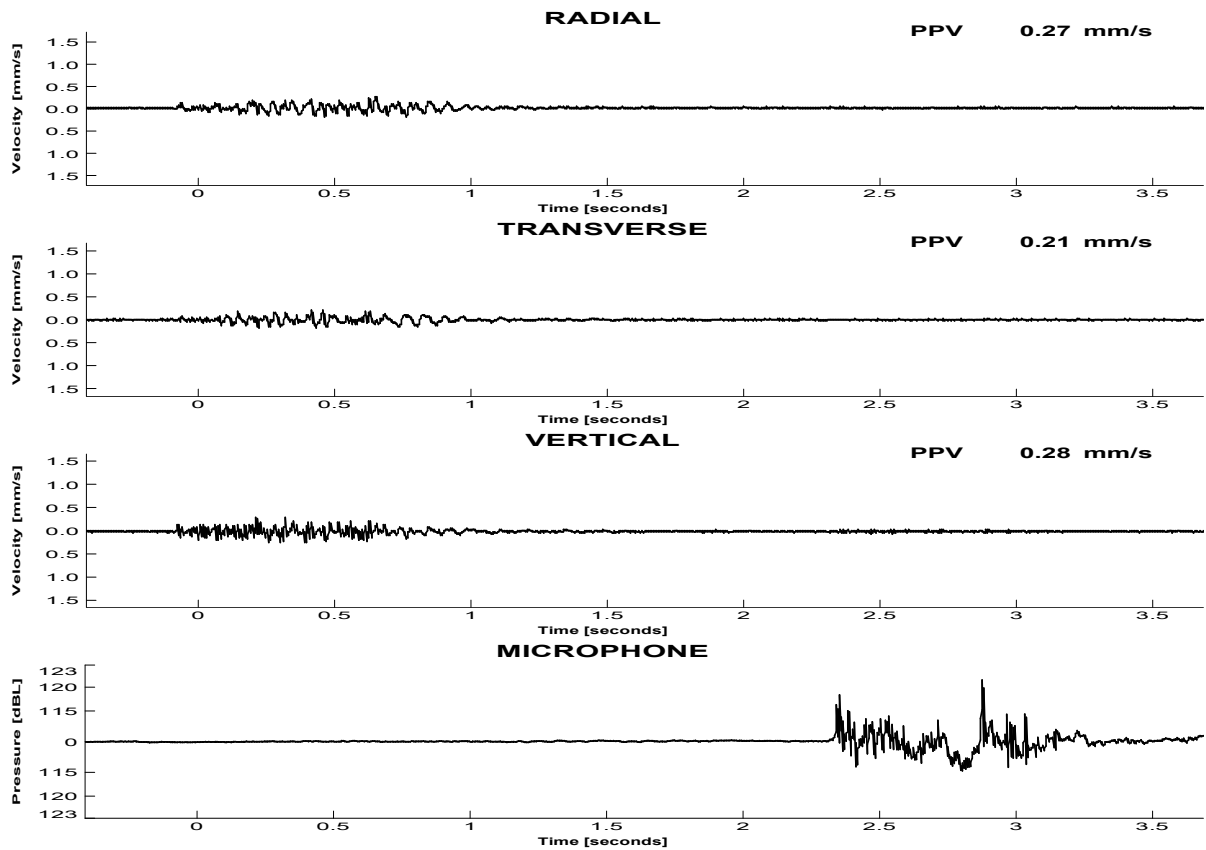


Bombo Quarry

Location: Stn 'C'
Triggered by : Vector Sum

Date: 2025-04-28
Time: 13:53:08

Triggers Set : Vector Sum: 0.23mm/s, Channels 1-3: 0.28mm/s



RESULTS

Peak Vector Sum Velocity : 0.33 mm/s at 0.299 s
Peak Overpressure : 121.1 dBL at 2.876 s

	Peak	Frequency	Time	Acceleration	Displacement
	[mm/s]	(ZC at Peak) [Hz]	(Rel. to Trigger) [s]	(Est. from PPV) [mm/s ²]	(Est. from PPV) [mm]
Radial	0.27	24.6	0.648	43	2.7
Transverse	0.21	51.9	0.415	45	1.0
Vertical	0.28	61.1	0.212	78	1.2

Monitoring conducted by:
(Your Company Name:Your Name)

TM Serial Number : 4420 Last Calibration: 2024-07-15