

# Crowdy Head Boat Harbour

## Community Update

August 2025



The NSW Government is delivering major improvements to maritime infrastructure and facilities statewide, to help the boating and wider community safely access, use and navigate our inland and coastal waters.

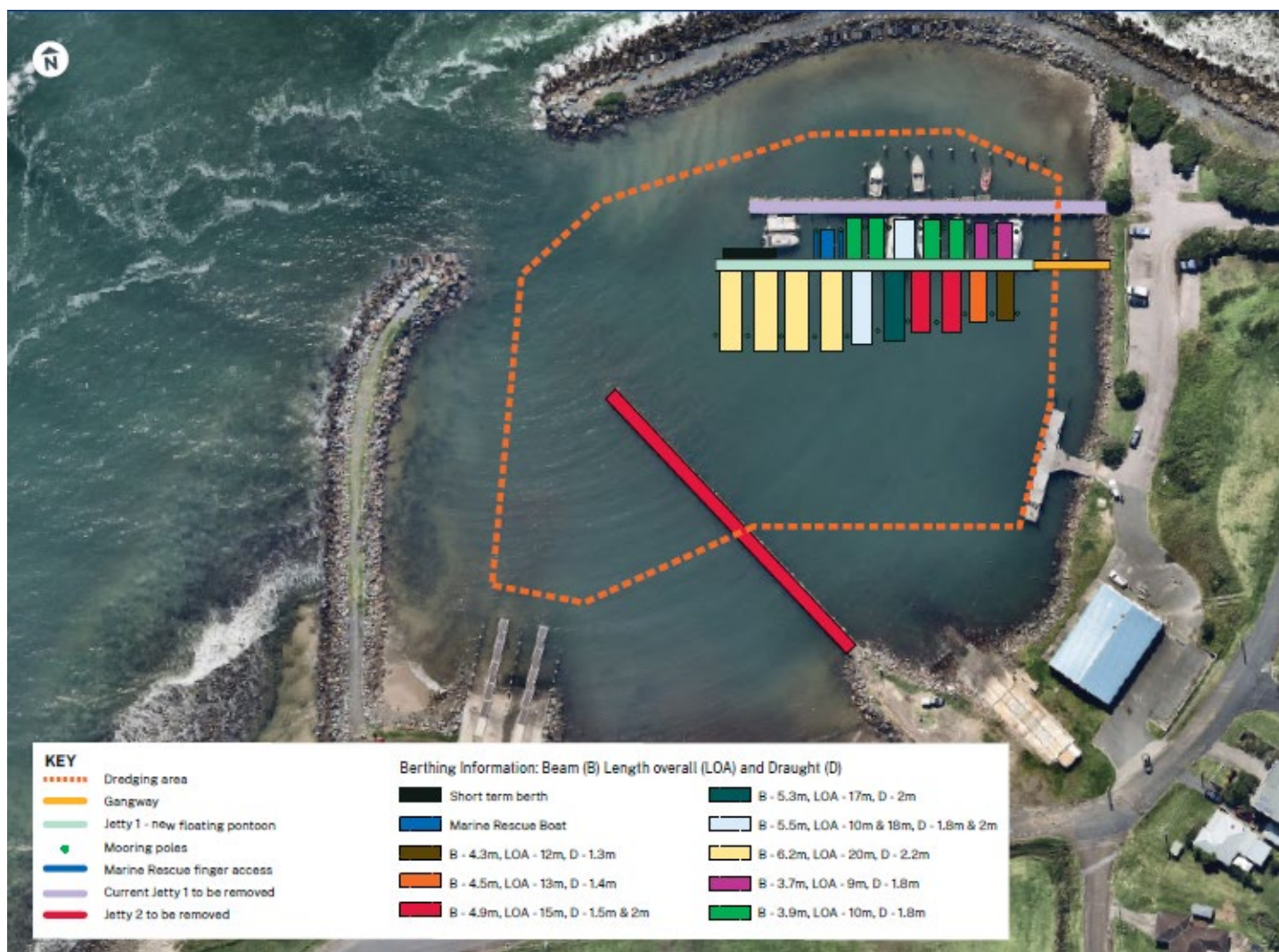
Following the contract award in July, work is planned to start on **Monday 8 September 2025**, weather permitting. This work is expected to take about 12 months.

### In this update

Find out about:

- The Project
- How will work affect you
- Our work areas
- Stages of work
- Changes for boaters





## The project

Our project aims to improve safety and accessibility for users of the harbour by delivering the following work:

- Removal of concrete Jetty 1 structure and replacement with a new floating pontoon structure.
- The new Jetty 1 will provide 19 vessel berths services with individual water and electricity supply. The design accommodates various vessel sizes and includes one temporary or short-term berth to be used for overnight or distressed vessels.
- Removal of the decommissioned Jetty 2.
- Dredging of the harbour to improve navigation and clearance depths for vessels.

## Our work schedule

We will start work onsite from **Monday 8 September 2025**, weather permitting and the work will take about 12 months.

Our work hours will be between **7am and 6pm** from **Mondays to Fridays** and **8am to 1pm** on **Saturdays**. We

do not work on Sundays or public holidays.

From time to time, we may need to work out of normal hours as our work can be impacted by tides and weather. We will notify our mailing list if work needs to take place out of our normal work hours. Please contact us if you have any issues or concerns about this.

## How will work affect you?

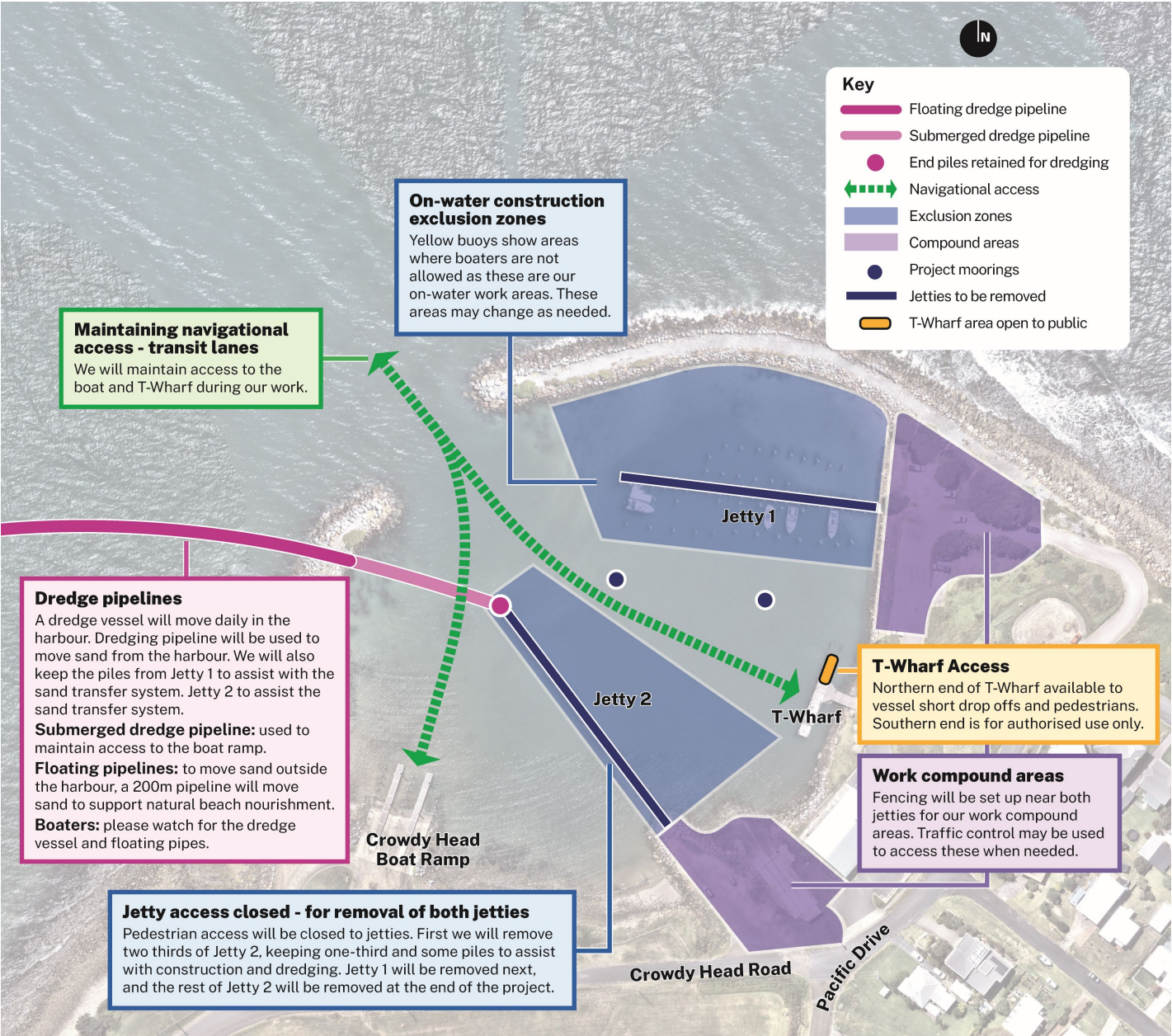
During our work there will be areas of the harbour that will no longer be accessible to you. This is for your safety and the safety of our workers. Traffic control may also be needed for larger deliveries. Please follow the signage and directions of workers in the area.

Our work may be noisy at times, but we will do everything we can to minimise impact. We will reduce noise by turning off machines and vehicles when not in use.






During piling work, which can be the most impacting and noisy stage of our work, we have planned around this work to minimise impacts to nearby residents. We will provide more information on this work before it starts.



Work Areas



What to expect onsite

Stage 01	Stage 02	Stage 03	Stage 04	Stage 05
Start of work	Jetty removal	Dredging	Building the new jetty	End of work
<p>Setting up site compounds.</p> <p>Installing navigational bouys for changes to navigation.</p> <p>Deliveries of plant and equipment.</p>	<p>We will remove most of Jetty 2. Part of Jetty 2 will be used to assist our work and dredging.</p> <p>Then we will remove Jetty 1.</p>	<p>The boat ramp will remain open during dredging work.</p> <p>The dredge vessel will move daily, boaters are advised to be aware of floating pipes.</p>	<p>Piling is needed to build the new floating pontoons (new jetty). This work may be noisy.</p> <p>We will let you know the process to get a berth.</p>	<p>Remove the rest of Jetty 2.</p> <p>Removal of site compounds and work areas.</p> <p>Removal of changes to navigation.</p> <p>Re-open the areas to the public.</p>
				

Above is brief description of our stages of work. Some of these stages may occur at the same time.

## Changes for boaters

While work on the harbour takes place, parts of the harbour will be off-limits for boaters to keep you and our workers safe. Here's what you need to know:

- Some areas will be marked off with yellow buoys. If you see these please stay out of that area and follow any signs and instructions from our workers.
- The boat ramp will stay open, however when we are dredging near the boat ramp area, please stay clear of the dredge vessel.
- The southern end of the T-Wharf is for authorised users only.
- The northern end of the T-Wharf can be used for emergency stops or short drop offs, but please follow direction from signage or workers.
- Fishing and other activities at the northern end of the T-Wharf are still allowed and can be accessed by the public.
- Travelling boaters can only anchor in the harbour for emergencies, and if your vessel is constrained by draft you should avoid entering the harbour.
- If you do need to enter the harbour over the next 12 months for emergencies or any other reason, please call **1800 973 343**.
- Please be aware during dredging, floating pipes may move daily and may be hard to see. For more information on passing dredge vessels scan the QR code to go to our waterways safety page.

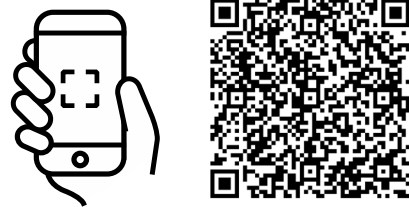


## Stay up to date

We will keep you updated during the progress of our work.

If you would like to receive email updates, then join our email mailing list.

To join our email mailing list please scan the QR Code



## Are you interested in a berth?

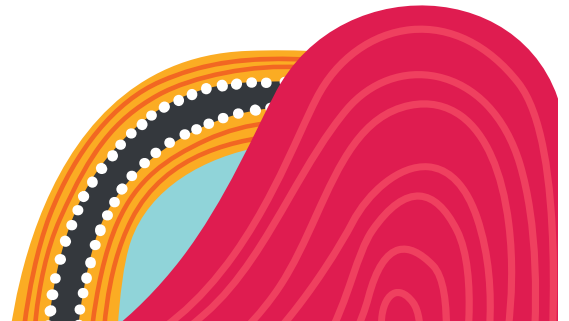
When we get closer to the end of construction, we will let you know the process to apply for a berth.

Make sure you have joined our email list so you get the information when it's available.

## Still have questions?

If you still have questions, we have updated the Frequently Asked Questions (FAQs) on our website.

You can also call us and speak with one of our team members.



## Contact us



Project Infoline **1800 973 343**



**crowdyheadjetty@transport.nsw.gov.au**

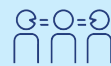


**MIDO Dredging Project**  
**Locked Bag 5100**  
**Rozelle NSW 1450**



Visit the online portal go to  
[nswroads.work/crowdyheadjetty](https://nswroads.work/crowdyheadjetty)

[www.transport.nsw.gov.au/privacy-statement#Your\\_Privacy](https://www.transport.nsw.gov.au/privacy-statement#Your_Privacy)



### Interpreter service

For languages other than English call **131 450**  
Arabic • Greek • Hindi • Mandarin • Vietnamese

طلب خدمة الترجمة الشفهية للغات غير الإنجليزية اتصل  
بالرقم **131 450**

Για υπηρεσίες διερμηνείας σε άλλες γλώσσες εκτός από τα Αγγλικά καλέστε το **131 450**

अंग्रेज़ी के अतिरिक्त अन्य भाषाओं के लिए दुभाषिया सेवा  
**131 450** पर कॉल करें

获取英语以外的其他语言口译协助服务可以致电**131 450**

Để có dịch vụ thông ngôn cho các ngôn ngữ khác tiếng Anh, gọi số **131 450**