

Safety improvements at the intersection of Epping Road and Culloden Road at Marsfield

Road Safety Program

June 2025



Transport for NSW acknowledges the Dharug people of the area as the Traditional Custodians of the lands on which we work and pays respect to Elders past and present.

Transport for NSW will carry out safety improvements at the intersection of Epping Road and Culloden Road, Marsfield to improve safety for road users by reducing the risk of crashes.

The Australian and NSW Governments are investing \$518 million into road safety projects across NSW.

The Road Safety Program launched in early 2024, aims to improve safety and reduce crashes on NSW roads. As part of this program, we will be extending the existing central median along Epping Road to improve safety for road users by reducing the risk of crashes when turning right from Epping Road, which involves crossing multiple lanes of traffic.

This will be a change for Eastbound vehicles travelling on Epping Road towards Marsfield which will no longer be able to turn right into Culloden Road.

Westbound vehicles travelling on Epping Road towards Macquarie Park will be able to still turn right into Culloden Road.

Transport's investigations show that some drivers are making illegal right turns at this location. Between 2019 and 2023 there have been 12 reported crashes on Epping Road at the Culloden Road intersection. Four crashes involved eastbound vehicles turning right from Epping

Road into Culloden Road which resulted in three injury crashes and one fatal crash.

What work are we doing?

Work includes:

- establishing a temporary work site
- locating existing underground services
- extending the median on Epping Road
- laying turf on extended median
- line marking and sign posting

When and where we'll be working

Work is expected to begin in **August** and will take approximately two weeks to complete, weather permitting. We will update the community with further project information before the start of construction.

Working hours will be **8pm to 5am, Sunday to Thursday**. There will be no work on Friday nights, Saturdays, or public holidays.

Changes to traffic and pedestrian movements

To ensure the safety of road users and workers, temporary changes to traffic and pedestrian movements will be in place around the work zone. Please keep to the speed limits and follow the direction of traffic controllers and signage.



What will this mean for you?

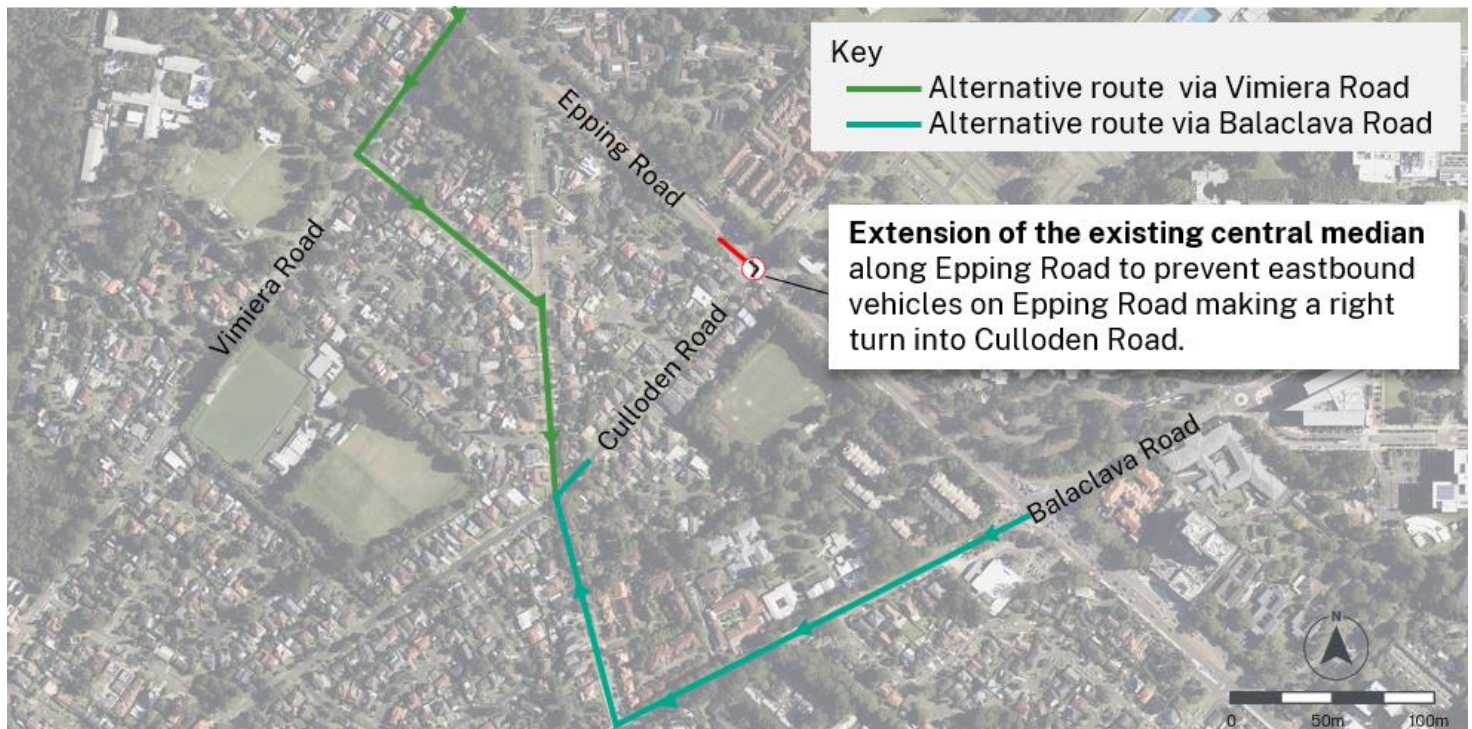
Road users travelling towards Marsfield along Epping Road will have the opportunity to turn right at the signalised intersections at Balaclava and Vimiera roads.

Managing how our work affects you

Our work needs to be carried out at night to lessen the disruption to traffic and reduce safety risks to our workers, pedestrians, and motorists. It may be noisy at times, but we will do everything we can to lessen our impacts by:

- turning off equipment and vehicles when not in use
- completing noisier tasks, such as jackhammering, by midnight
- using quieter equipment where possible and targeted lighting to reduce light spill

Location of work area



Contact us



Project Infoline **1800 684 490**



projects@transport.nsw.gov.au



Transport.nsw.gov.au/projects



Interpreter service

For languages other than English call **131 450**
Mandarin • Cantonese • Korean • Italian • Arabic

获取英语以外的其他语言口译协助服务可以致电**131 450**

獲取英語以外的其他語言傳譯協助服務可以致電**131 450**

영어 외 기타 언어 통역 서비스는 **131 450**번으로 전화하세요

Per il servizio di interpretariato per lingue diverse
dall'inglese chiamare il **131 450**

لطلب خدمة الترجمة الشفهية للغات غير الإنجليزية اتصل
بالرقم **131 450**