

Jervis Bay Road intersection upgrade

Princes Highway upgrade program

Temporary traffic changes

October 2025



Transport for NSW acknowledges the Traditional Custodians of the lands on which we work and pays respect to Elders past and present.

During October, work will continue on the Jervis Bay Road intersection upgrade. To ensure the safety of the community and workers, and to minimise traffic disruption, some activities will be carried out at night with road closures and detours in place.

What work are we doing?

Eleven super-T girders, which will form the deck of the new bridge over Jervis Bay Road, will be delivered to site and lifted directly from the delivery trucks into position over five nights.

Ordinarily, work is limited to two or three consecutive nights per week. However, due to oversize travel restrictions, delivery and installation of the girders will be completed outside standard working hours under our Environment Protection License.

Road resurfacing and partial opening of eastern roundabout

Southbound lanes of the Princes Highway will be resurfaced during some shifts. Jervis Bay Road will also close at times to lay asphalt for the partial opening of the new eastern roundabout.

When we'll be working

- **Girder installation:** Monday 13 – Thursday 16 and Sunday 19 October 2025.

- **Road resurfacing:** Work will take place on the Princes Highway on 13, 15, 16 and 19 October 2025, and on Jervis Bay Road on 22 and 23 October 2025.

Work will be carried out between 6pm–7am, with Jervis Bay Road closed 9pm–5am; dates may change due to weather or operations with updates on signs, Live Traffic, and direct notices to residents.

Temporary traffic changes

During works on the Princes Highway, a single lane closure and reduced speed limit of 40km/h will be in place. Road users are advised to follow signage and traffic control and allow five minutes additional travel time.

Detour

Between **9pm and 5am** during night work Jervis Bay Road will be closed between the Princes Highway and Gardner Road. Access will be maintained for residents and emergency services). For all other road users, detours will be in place.

Northbound traffic will detour via Island Point Road, Grange Road, Hawken Road, and Pine Forest Road.

Due to work on The Wool Road, **southbound traffic** on the Princes Highway heading east will detour via Hawken Road and Pine Forest Road.

Road users using this detour should allow up to 15 minutes of additional travel time.

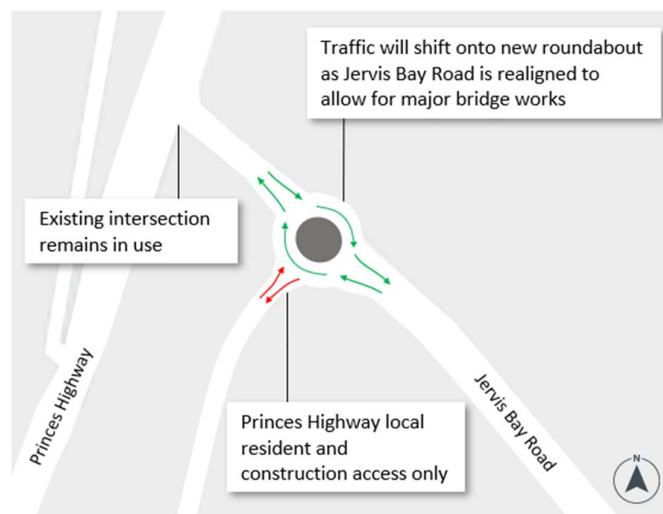
What will this mean for you?

Some noise may be experienced during night work. To minimise impacts, we will use non-tonal reversing alarms, turn off machinery when not in use, and schedule noisier activities earlier in the night. Noise levels will be monitored throughout the night shifts.

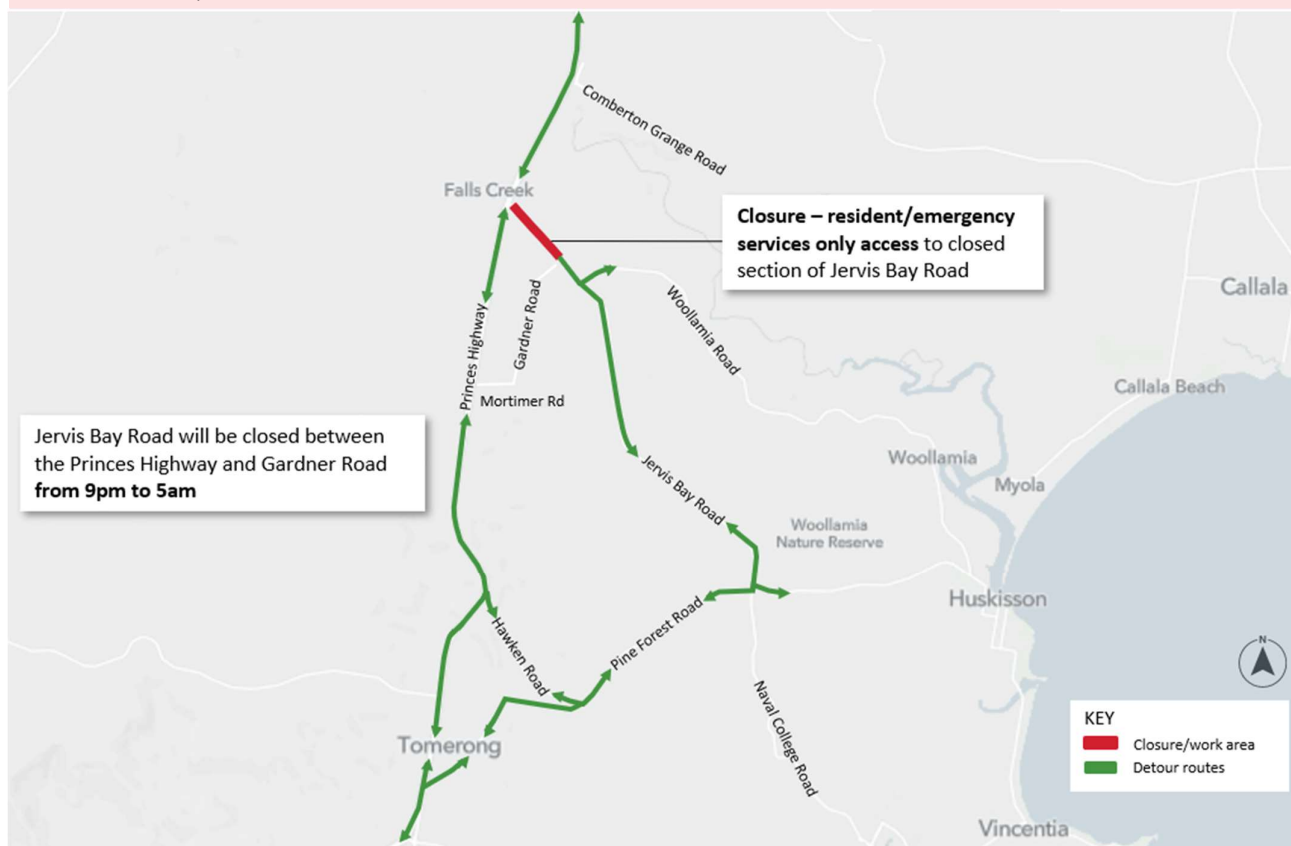
Emergency services have been notified, and plans are in place to ensure access if required.

How will the roundabout work?

Once the roundabout is complete, Jervis Bay Road traffic will use the eastern and western exits, while the southern exit will serve a temporary access road for residents and construction vehicles only.



Work area, road closures and detours



Contact us



Project Infoline 1800 570 562



Visit the online portal at nswroads.work/jervisbayroad



jbrcommunity@srgglobal.com.au



For the latest traffic updates:
Call 132 701, visit [livetraffic.com](https://www.livetraffic.com) or
download the app Live Traffic NSW