

# Day and night work in Kemps Creek and Cecil Park

## M12 Motorway – Central

July 2025



Transport for NSW acknowledges the Dharug people as the Traditional Custodians of the lands on which we work and pays respect to Elders past and present.

The Australian and NSW governments are building the M12 Motorway to provide direct access to the Western Sydney International Airport at Badgerys Creek and connect to Sydney's motorway network.

### What work are we doing?

Transport for NSW is continuing work in **July 2025** along Elizabeth Drive, Clifton Avenue, Mamre Road, Range Road and Duff Road in Kemps Creek and Cecil Hills.

Work includes:

- Finishing pavement work
- Continuing grass cutting and vegetation maintenance
- Commissioning new electrical and communication assets
- Removing and installing new signs
- Completing pavement line marking
- Removing temporary fencing
- Completing earthwork and bridge work.

### When we'll be working

We will work between **7am** and **6pm, Monday to Friday** and between **8am** and **6pm** on **Saturdays**.

We will also carry out up to **23 nights** of work during July 2025 between **6pm** and **7am, Monday to Friday**. We will not complete noisy work more than two nights in a row and three nights in a week, in the same location.

Night work is taking place for the safety of our workers and road users and to minimise traffic disruptions.

### What equipment will be used?

Equipment will include light and heavy vehicles, hand power tools, cranes, paving and concreting equipment, lighting towers and traffic barrier equipment.

### What will this mean for you?

You may see an increase in activity in the area.

We will be making temporary traffic changes along the work zone. Please follow signs, adhere to speed limits, and follow the direction of traffic controllers.

The map over the page shows the location of our work.

### Managing our impacts

Some work will be noisy at times; however, we will minimise impacts by:

- completing noisier activities earlier in the night where possible
- turning off equipment and machinery when not in use.
- Taking a one hour after three hours of high impact work.



## Report illegal dumping

We have observed numerous cases of illegal dumping at various locations in the Kemps Creek and Cecil Park areas. Illegal dumping is wrong and often dangerous. Penalties for illegal dumping can be up to \$15,000 with potential jail time for anyone caught.

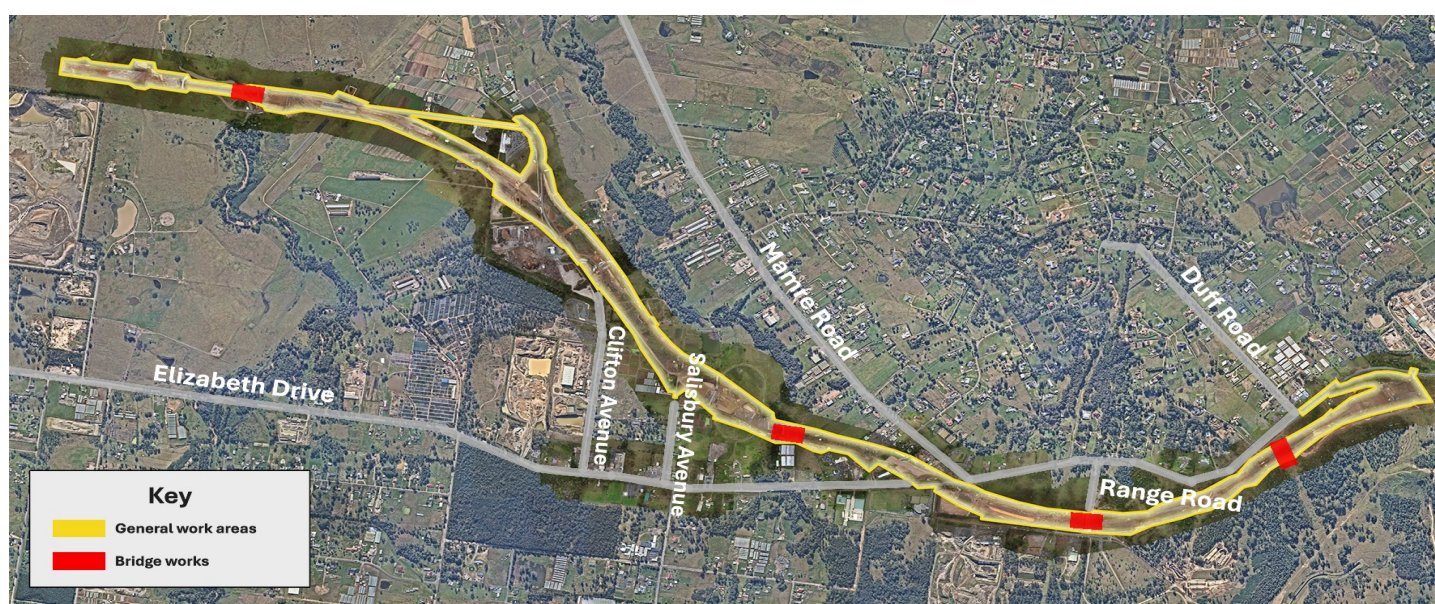
If the dumped waste is an immediate threat to human health or the environment, call the EPA Environment Line on 131 555 or make a report on the RID website at [ridonline.epa.nsw.gov.au](http://ridonline.epa.nsw.gov.au).

Reports of illegal dumping can also be made to your local council.

## Out of hours work lookahead

OOHW activities	Location	Work hours	Timing	Noise impacts
<b>Finishing work</b> (line marking and removal of temporary signs and fencing).	M12 Motorway	6pm to 7am Monday - Friday	Until September 2025	Moderate to quiet

## Location of work area



## Contact us



Project Infoline and 24-hour Construction Response Line **1800 517 155**



**M12central@seymourwhyte.com.au**



**nswroads.work/m12**



PO Box 973  
Parramatta NSW 2124



### Interpreter service

For languages other than English call **131 450**  
Arabic • Greek • Hindi • Mandarin • Vietnamese

لطلب خدمة الترجمة الشفهية للغات غير الإنجليزية اتصل  
بالرقم **131 450**

Για υπηρεσίες διερμηνείας σε άλλες γλώσσες εκτός από  
τα Αγγλικά καλέστε το **131 450**

अंग्रेजी के अतिरिक्त अन्य भाषाओं के लिए दुभाषिया सेवा  
**131 450** पर कॉल करें

获取英语以外的其他语言口译协助服务可以致电**131 450**

Để có dịch vụ thông ngôn cho các ngôn ngữ khác tiếng  
Anh, gọi số **131 450**

[www.transport.nsw.gov.au/privacy-statement#Your\\_Privacy](http://www.transport.nsw.gov.au/privacy-statement#Your_Privacy)



### For the latest traffic updates:

Call 132 701, visit [livetraffic.com](http://livetraffic.com) or  
download the app Live Traffic NSW