

Out of hours work along Elizabeth Drive and Badgerys Creek Road, Badgerys Creek and The Northern Road, Luddenham

M12 Motorway – West

July 2025



Transport for NSW acknowledges the Dharug people as the Traditional Custodians of the lands on which we work and pays respect to Elders past and present.

The Australian and NSW governments are building the M12 Motorway to provide direct access to the Western Sydney International Airport at Badgerys Creek and connect to Sydney's motorway network.

What work are we doing?

Transport for NSW will work up to **27 nights** in **July 2025** along the M12 Mainline, Elizabeth Drive and Badgerys Creek Road, Badgerys Creek, and The Northern Road, Luddenham.

Work includes:

- repairing, maintaining, installing, removing and adjusting road pavement and kerbs, barriers, line marking, signs and other finishing work
- utility work across Elizabeth Drive and The Northern Road
- delivering materials to construction sites on The Northern Road, and Elizabeth Drive
- continuing Elizabeth Drive bridge and road alignment work including removing barriers, installing temporary traffic road furniture, paving, asphaltting and line marking
- grinding, grooving and concrete cutting
- delivering and removing oversized equipment.

When we'll be working

We will work between **6pm** and **7am**, **Monday** to **Friday**.

Our normal work hours are between **7am** and **6pm**, **Monday** to **Saturday**. There will be no work on Sundays and public holidays.

What equipment will be used?

Equipment may include light and heavy vehicles, lighting towers, construction machinery, hand powered tools, cranes, asphalt and line marking equipment.

What will this mean for you?

You may see increased activities in the area.

You may notice:

- workers and vehicles
- traffic controllers and signage
- road closures and reduced speed limits
- noise from machinery and equipment.

Managing our impacts

Some work will be noisy at times, however we will minimise impacts by:

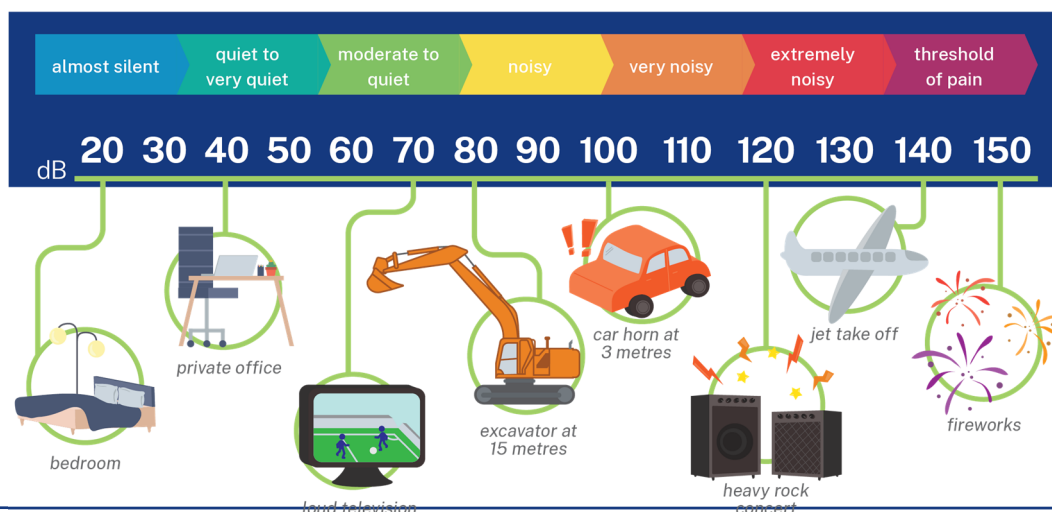
- completing noisier activities earlier in the night where possible
- turning off equipment and machinery when not in use.

We will contact directly impacted residents regarding this work.

Transport for NSW

Out-of-hours work lookahead

OOHW Activities	Location	Work hours	Timing (2025)	Noise Impacts
Paving, grooving, milling and grinding	Elizabeth Drive / Warami Drive / M12 mainline	6pm to 7am Monday – Friday 7am to 6pm Saturdays	July – September	Moderate
Installing signs	The Northern Road / Elizabeth Drive	6pm to 7am Monday – Friday 7am to 6pm Saturdays	July – September	Moderate
Testing lights	M12 mainline	6pm to 7am Monday – Friday 7am to 6pm Saturdays	July – September	Quiet
Finishing work	Elizabeth Drive / Warami Drive/ M12 Mainline	7am to 6pm Saturdays	July – September	Quiet
Asphalting	Elizabeth Drive / Warami Drive	6pm to 7am Monday - Friday 7am to 6pm Saturdays	July – September	Moderate
General site movements	Elizabeth Drive / Warami Drive / M12 mainline	6pm to 7am Monday - Friday 7am to 6pm Saturdays	July – September	Quiet/Moderate
Asphalting and line marking	Elizabeth Drive and Badgerys Creek Road	8pm to 6am Friday - Monday	July – September	Moderate/Noisy



Transport for NSW

Location of work area

Work zone - Elizabeth Drive, Badgerys Creek, The Northern Road and Luddenham Road, Luddenham



Contact us



24-hour Project Infoline
1800 517 155



m12westinfo@cpbggjv.com.au



nswroads.work/m12



CPB Georgiou Site Compound
Off roundabout at 1953 Elizabeth Drive
Badgerys Creek NSW 2555



For the latest traffic updates:

Call 132 701, visit livetraffic.com or
download the app Live Traffic NSW



Interpreter service

For languages other than English call **131 450**
Arabic • Greek • Hindi • Mandarin • Vietnamese

لطلب خدمة الترجمة الشفهية للغات غير الإنجليزية اتصل
بالرقم **131 450**

Για υπηρεσίες διερμηνείας σε άλλες γλώσσες εκτός από
τα Αγγλικά καλέστε το **131 450**

अंग्रेज़ी के अतिरिक्त अन्य भाषाओं के लिए दुभाषिया सेवा
131 450 पर कॉल करें

获取英语以外的其他语言口译协助服务可以致电**131 450**

Để có dịch vụ thông ngôn cho các ngôn ngữ khác tiếng
Anh, gọi số **131 450**

www.transport.nsw.gov.au/privacy-statement#Your_Privacy

To subscribe to the email distribution list for this project, please contact nswroads.work/m12

Page 3 of 3