

Out of hours work in Badgerys Creek and Luddenham

M12 Motorway – West

September 2025



Transport for NSW acknowledges the Dharug people as the Traditional Custodians of the lands on which we work and pays respect to Elders past and present.

The Australian and NSW governments are building the M12 Motorway to provide direct access to the Western Sydney International Airport at Badgerys Creek and connect to Sydney's motorway network.

What work are we doing?

In September 2025, we will carry out work along:

- the M12 Motorway
- Elizabeth Drive and Badgerys Creek Road, Badgerys Creek
- The Northern Road, Luddenham.

Our work includes:

- installing traffic road furniture such as guardrails, signs, and barriers
- asphaltting, line marking and other minor finishing work
- utility work
- testing Intelligent Transport Systems (ITS), and street and traffic lights
- delivering and removing oversized equipment and materials from site.

When we'll be working

We will work between **7am** and **6pm, Monday to Friday** and **8am to 6pm Saturdays**. There will be no work on Sundays and public holidays.

We will also carry out out-of-hours work between **6pm and 7am, Monday to Friday**, and **7am to 8am on Saturdays**.

What equipment will be used?

Equipment may include light and heavy vehicles, lighting towers, construction machinery, hand powered tools, cranes, asphalt and line marking equipment.

Traffic changes

We will reduce speed limits during this work and make temporary traffic changes including lane and road closures.

Please plan your journey, follow signs, adhere to speed limits, and follow the direction of traffic controllers.

Managing our impacts

You may see an increase in activity in the area as our workers move around the site. Some work will be noisy at times; however, we will minimise impacts by:

- completing noisier activities earlier in the night where possible
- turning off equipment and machinery when not in use.

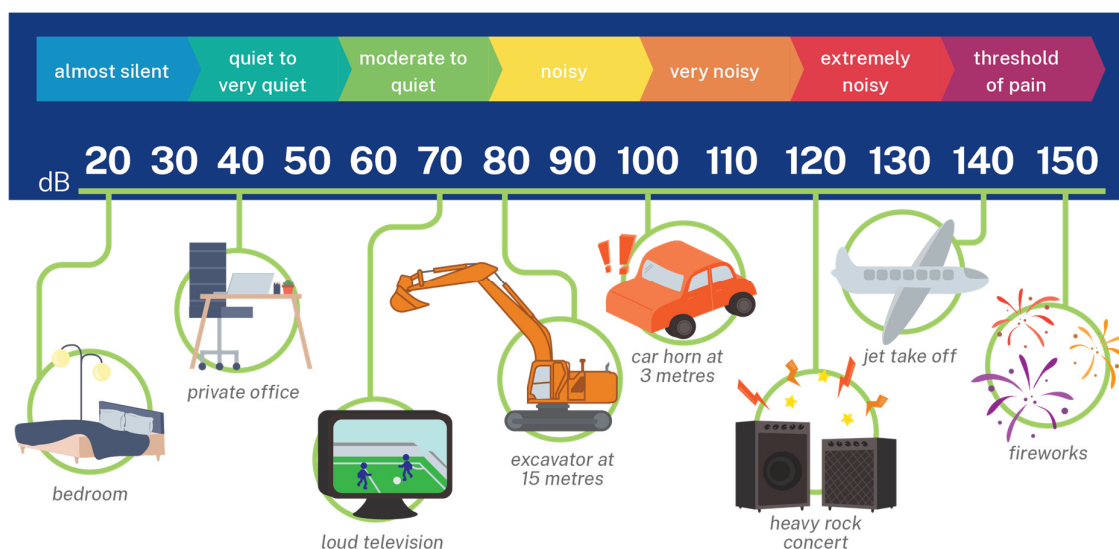
We will not perform high noise work activities for more than two nights in a row, three nights a week or ten nights in a month in the same location.

We will contact affected residents regarding high noise activities at night.

Transport for NSW

Out-of-hours work lookahead

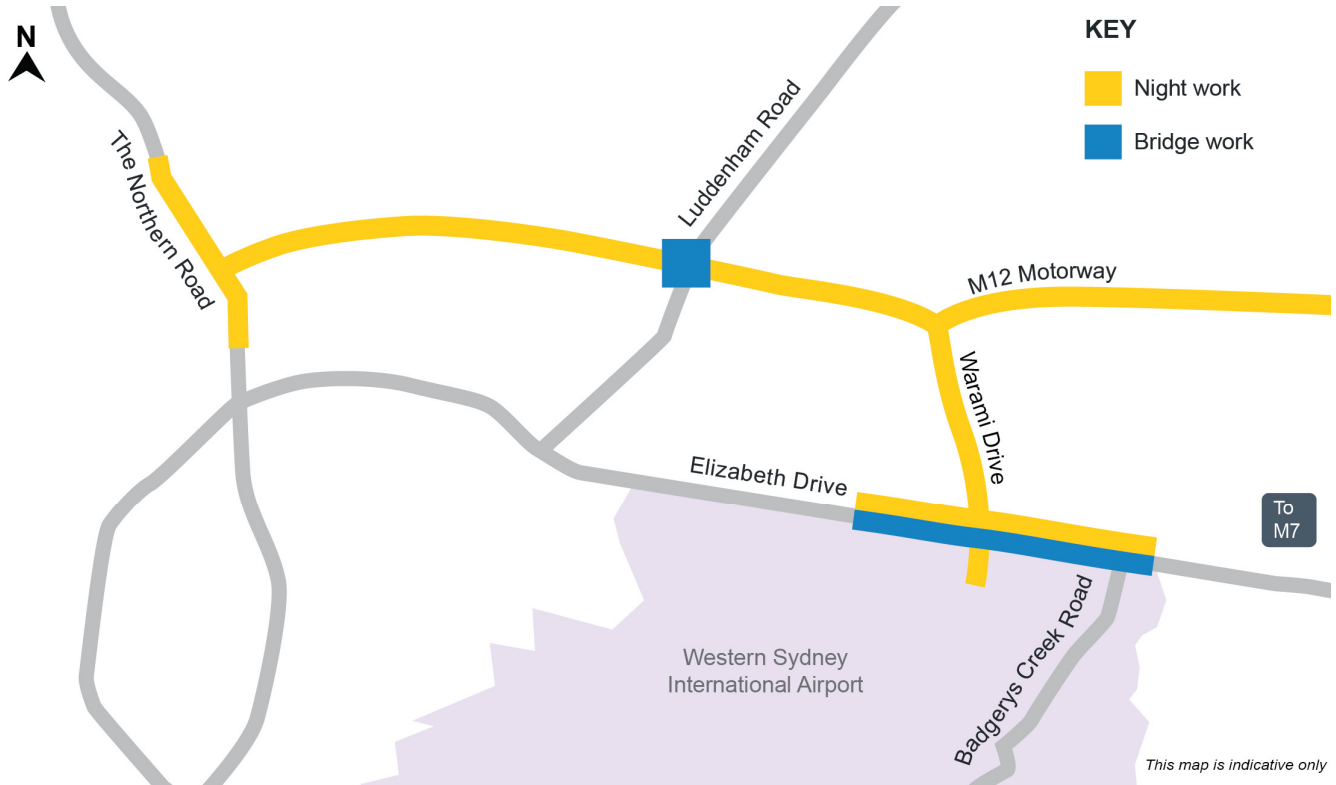
OOHW Activities	Location	Work hours	Timing (2025)	Noise Impacts
Installing traffic road furniture, and testing ITS and traffic lights	The Northern Road / Elizabeth Drive / Warami Drive	6pm to 7am Monday – Friday 7am to 8am Saturdays	September	Moderate
Testing streetlights and ITS	M12 Motorway	6pm to 7am Monday – Friday 7am to 8am Saturdays	September – November	Quiet
Finishing work	Elizabeth Drive / Warami Drive/ M12 Motorway	7am to 8am Saturdays	September – November	Quiet
Asphalting	Elizabeth Drive / Warami Drive	6pm to 7am Monday - Friday 7am to 8am Saturdays	September	Moderate
Line marking and finishing work	Elizabeth Drive / Badgerys Creek Road	8pm to 5am Monday - Saturday	September – October	Moderate



Transport for NSW

Location of work area

Work zone - Elizabeth Drive, Badgerys Creek, The Northern Road and Luddenham Road, Luddenham



Contact us



24-hour Project Infoline
1800 517 155



m12westinfo@cpbggjv.com.au



nswroads.work/m12



CPB Georgiou Site Compound
at 1953 Elizabeth Drive
Badgerys Creek NSW 2555



For the latest traffic updates:
Call 132 701, visit livetraffic.com or
download the app Live Traffic NSW



Interpreter service

For languages other than English call **131 450**
Arabic • Greek • Hindi • Mandarin • Vietnamese

لطلب خدمة الترجمة الشفهية للغات غير الإنجليزية اتصل
بالرقم **131 450**

Για υπηρεσίες διερμηνείας σε άλλες γλώσσες εκτός από
τα Αγγλικά καλέστε το **131 450**

अंग्रेज़ी के अतिरिक्त अन्य भाषाओं के लिए दुभाषिया सेवा
131 450 पर कॉल करें

获取英语以外的其他语言口译协助服务可以致电**131 450**

Để có dịch vụ thông ngôn cho các ngôn ngữ khác tiếng
Anh, gọi số **131 450**

www.transport.nsw.gov.au/privacy-statement#Your_Privacy



To subscribe to the email distribution list for this project, please contact nswroads.work/m12

Page 3 of 3