

Medlow Bath Upgrade

Community Update

March 2025



Australian Government

BUILDING AUSTRALIA



Pedestrian Bridge lifted into place over the Great Western Highway

Together the Australian and NSW Governments are investing \$176.6 million towards the Medlow Bath Upgrade which will reduce congestion and improve safety and accessibility for all road users, commuters, and pedestrians.

Work is progressing on the Medlow Bath Upgrade with the project on track to be finished in mid 2025.

There has been a focus on installing the bridge segments on the Pedestrian Bridge which is set to open in coming weeks.

Key construction activities on the Highway in the coming months will focus on the completion of the new signalised intersection at Bellevue Crescent and continued works to expand the Great Western Highway.

In this update

Find out about:

- Pedestrian Bridge and Station Upgrade works
- Bellevue Crescent temporary intersection
- Upcoming 'Coffee and a Chat' events.

Pedestrian Bridge and Station Upgrade

Transport for NSW (Transport) continues to work with principal contractor, Arenco with major developments in the construction of the Pedestrian Bridge and Medlow Bath Station Upgrade.

Work along Railway Parade has been completed with the construction of new raised pedestrian walkways, balustrades and security fencing adjacent to the Station.

This work ensures pedestrians can now move safely along Railway Parade between the commuter car park and the Station.

Upgrades to the Medlow Bath Station have also been completed with the construction of a commuter staircase and lift that when opened will link pedestrians with direct access to the platform.

These developments will allow commuters and residents to enter and exit Medlow Bath Station safely, connecting to the newly constructed pedestrian pathways and kiss and ride area.

We have also reached a major milestone for the project with the installation of the Pedestrian Bridge over the Great Western Highway.

We proudly worked with S+L Steel, a family run Western Sydney business who fabricated the curved steel box girders that make up the unique form of the Medlow Bath Pedestrian Bridge.

The first three bridge segments were lifted into place adjacent to the Mazda dealership in early September and included a lift shaft and curved staircase.

The third segment over the Great Western Highway was installed in early November and required careful planning and logistics with intermittent road closures throughout the overnight work period.

The final segments were lifted into place throughout December which complete the structure and links the pedestrian access over the Great Western Highway.



The Pedestrian Bridge being lifted over the highway

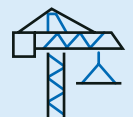
Facts about the Pedestrian Bridge



Bridge is designed in 6 segments and is constructed from Australian made steel from BlueScope in Port Kembla.



The total length of the bridge is 105 metres and the total structure weighs 178 tonnes.



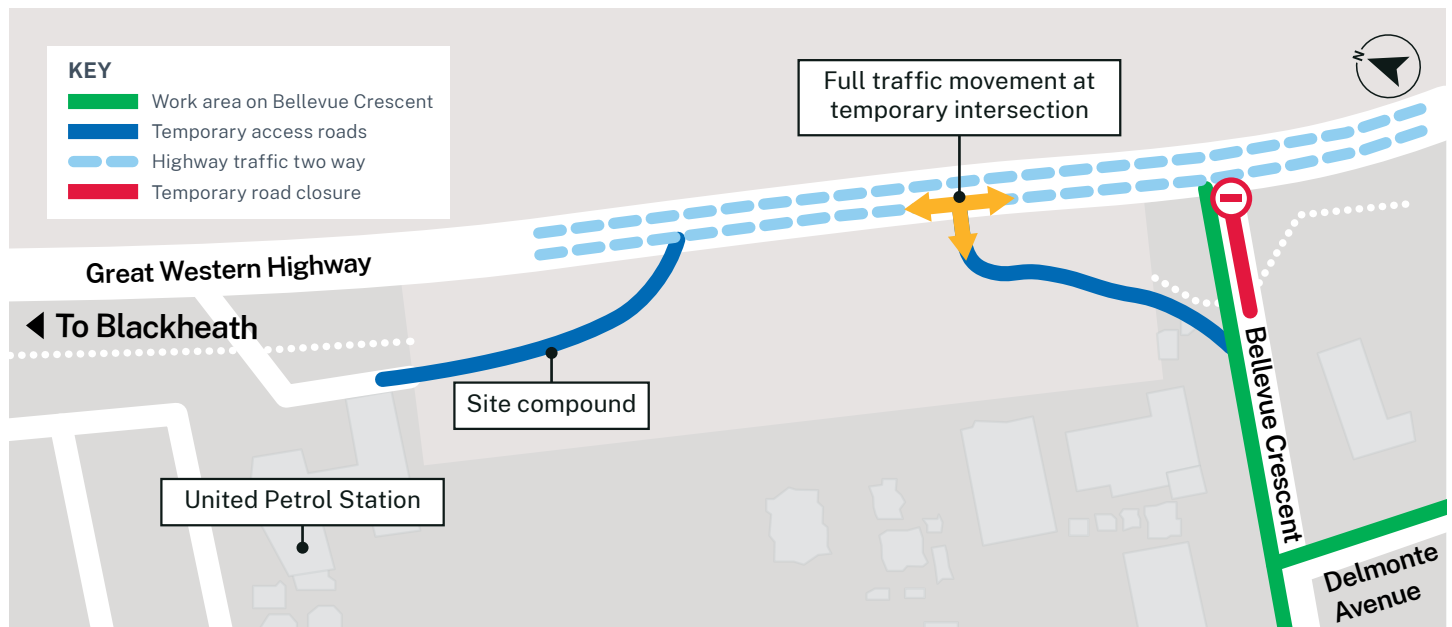
Each segment was lifted into position using a 400-tonne crane.



Bridge has a suspended recycled composite material floor designed to reduce slip risk.

With the bridge lift complete, focus has now shifted towards the final elements of construction ahead of the Pedestrian Bridge opening in coming months.

Once completed, the Station Upgrade and Pedestrian Bridge will be fully accessible with lifts and ramps, providing safe passage for pedestrians to and from the Station and over the Great Western Highway.



Map of the work area and temporary traffic changes

Access for Bellevue Crescent temporary intersection to remain in place

In response to community concern, we will be maintaining the revised temporary access arrangements for Bellevue Crescent until the completion of the signalised intersection. This includes full access traffic movements right in/out and left in/out. We thank the community for their patience while we worked to improve these temporary arrangements.

Remaining works to be completed for Bellevue Crescent and Delmonte Avenue include:

- stormwater drainage and utility relocation
- roundabout construction
- earthworks, pavement work
- driveway, kerb and gutter installation
- line marking and road furniture installation
- landscaping in planting of trees.

For traffic updates, call **132 701**, download the Live Traffic NSW App or visit **livetraffic.com**.



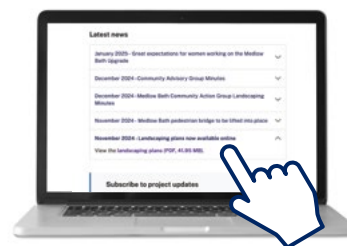
Aerial view of Bellevue Crescent

Landscaping plans

Did you know that you can view the landscaping plans for Medlow Bath on our project website? As a reminder here's how to view the landscaping plans:

1. Go to **<https://nswroads.work/gwhmedlow>**
2. Under "Project Documents" see below, click on November 2024 to drop the menu down
3. The PDF of the plans are available for viewing.

Following recent community consultation and feedback, some revisions are being made to the landscape plans in collaboration with Blue Mountains City Council. The revised plans will be available on our project website in coming weeks.



Never miss an update

Construction can change quickly, and we often email updates to residents and other stakeholders who have registered for our e-news.

If you would like to join the list so that we can keep you up to date, please email us at **gwh@transport.nsw.gov.au** and let us know to add you to the Medlow Bath Upgrade subscription list.

Smoothing a bump in the road

A number of people have spoken with the Project team about their concerns around the length and placement of the median strip at the top of Railway Parade.

While the median is in place to prevent people performing dangerous U-turn maneuvers too close to the intersection, we understand that the current design is leading some vehicles to hit the median.

We've listened to your concerns, and we are redesigning the median strip to shorten it by around three metres.

A big thank you to the Community Action Group and other residents who have brought this to our attention.

Vibratory rollers

The Medlow Bath Upgrade regularly uses vibratory rollers, which use a combination of weight and vibration to compact soil, gravel and asphalt to create a denser and more durable road.

We must compact the road properly to ensure that it can bear the weight of traffic on the highway for many years to come. We cannot achieve the level of compaction we need without using the vibratory rollers.

We appreciate that these vibrations can be obvious to the community.

We assure the community that we are required to monitor all vibrations to ensure they don't exceed Project allowances.

If vibrations are regularly breaching limits, we re-examine the work to reduce impacts.

For more information on how vibratory rollers work, please check out our fact sheet at [\[url for online factsheet to be supplied when factsheet approved.\]](#)

Coffee and a Chat

In 2024, Transport began running **Coffee and a Chat** at the **Potbelly Café**.

These sessions have been well attended and are a great opportunity for the community to meet the project team and learn more about project activities and raise any concerns.

We would like to thank the community who have connected with us, as well as the staff from Potbelly who continue to welcome us and all of our attendees.

We will continue this program at the **Potbelly Café** on the last Wednesday of each month between **10am** and **12pm**.

Upcoming dates:

- Wednesday, 26 March
- Wednesday, 30 April

And if you can't make it, you can reach out to us anytime on the contact details below.

Contact us



24-hour Construction Response Line
1800 953 777, Press 1 for roadworks, 2 for bridge work, or 4 for Transport for NSW



gwhmedlow@abergeldie.com (roadworks)



gwh@arenco.com.au (station/bridge works)



gwh@transport.nsw.gov.au (general enquiries)



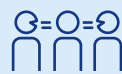
Roadworks: nswroads.work/gwhmedlow



Station upgrade:
nswroads.work/medlowbathbridge



For the latest traffic updates:
Call 132 701, visit [livetraffic.com](https://www.livetraffic.com)
or download the app Live Traffic NSW



Interpreter service

For languages other than English call **131 450**
Arabic • Greek • Hindi • Mandarin • Vietnamese

لطلب خدمة الترجمة الشفهية للغات غير الإنجليزية اتصل
بالرقم 131 450

Για υπηρεσίες διερμηνείας σε άλλες γλώσσες εκτός από τα Αγγλικά καλέστε το **131 450**

अंग्रेजी के अतिरिक्त अन्य भाषाओं के लिए दुभाषिया सेवा
131 450 पर कॉल करें

获取英语以外的其他语言口译协助服务可以致电**131 450**

Để có dịch vụ thông ngôn cho các ngôn ngữ khác tiếng Anh, gọi số **131 450**

www.transport.nsw.gov.au/privacy-statement#Your_Privacy