

Sydney Trains

Morrisset to Vales Point Resignalling

From Saturday 17 May to Monday 19 May 2025

What we're doing

To modernise the rail network, Sydney Trains is carrying out construction work from Morrisset to Vales Point from Saturday 17 May to Monday 19 May.

This work involves modification and renewal of existing signal infrastructure, construction of cable routes and track and drainage works.

We understand this work may have an impact on you and appreciate your patience and understanding.

How this affects you

Noise and Light Pollution

- These works may create additional noise over the weekend and at night.
- **Work will take place from 2am Saturday 17 May to 2am Monday 19 May.**
- Equipment may be delivered to the worksite outside the above times. Some deliveries may occur at night due to day time travel restrictions on large vehicles.
- Diesel work trains will be kept on site and may be idling for extended periods.
- Finishing works may take place following this period, including the removal of equipment.
- Light pollution will be minimised by directing light away from properties.

Traffic and Parking

- **The southern part of the carpark on Macquarie Street at Morrisset Station will be closed from Wednesday 14 May to Wednesday 21 May.**
- Heavy vehicles will be using local streets to access the rail corridor.
- We will park vehicles inside the rail corridor where possible, but please be aware that on-street parking may be limited near worksites.

We apologise for any inconvenience and thank you for your co-operation during these essential works.

Contact us

For upcoming work: www.transport.nsw.gov.au/sydtraincommunity

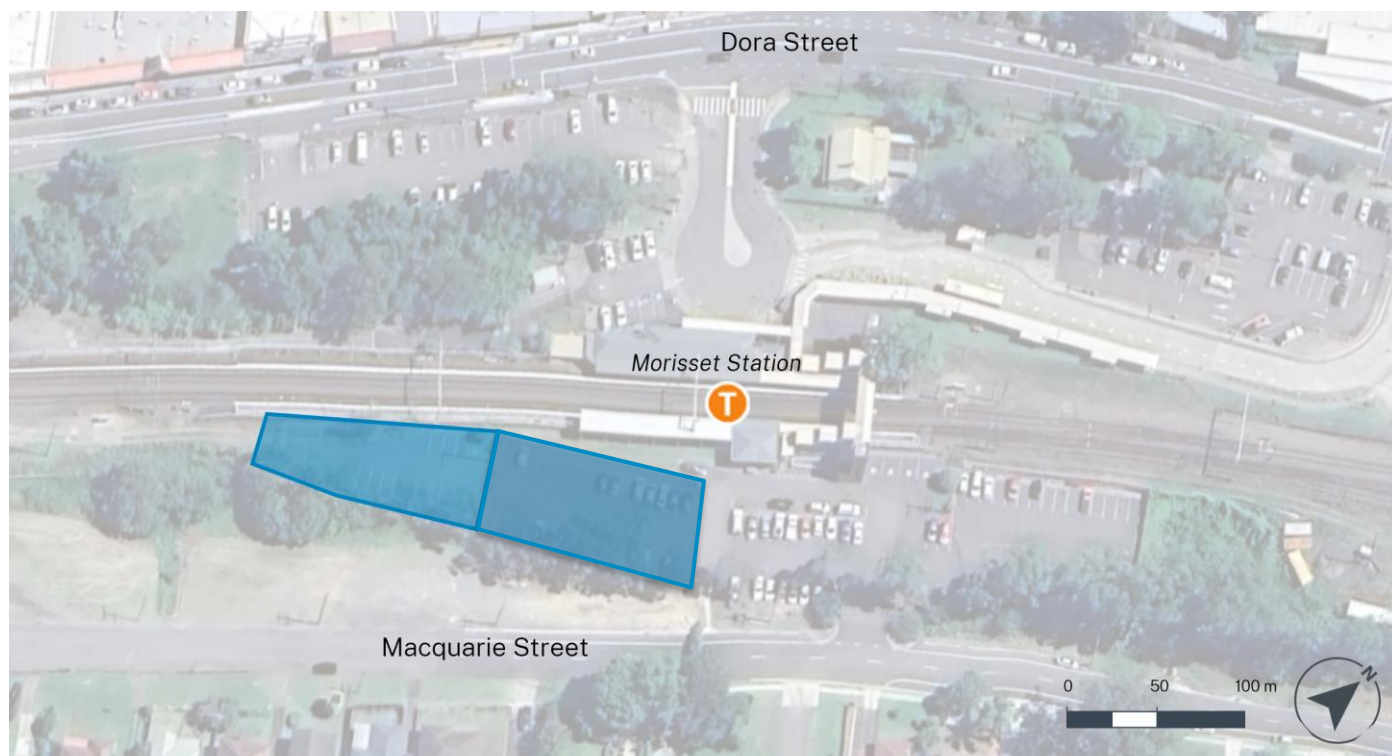
To report environmental concerns (24hours) **1300 656 999**

Project Infoline: **1800 684 490**

Email: projects@transport.nsw.gov.au

Sydney Trains

Location of parking impacts



KEY  Parking unavailable from Wednesday 14 May to Wednesday 21 May.