

Moss Vale Station and Stabling Yard Upgrade

Noise wall installation

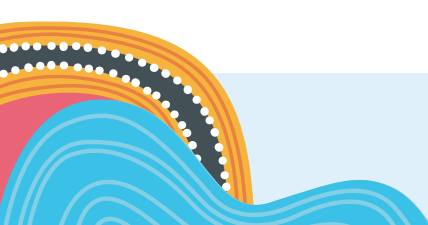
May 2025



Artist's impression: Noise wall along the western side of the stabling yard on Lackey Road

The NSW Government is investing in an upgrade to Moss Vale Station and Stabling Yard to make the station more accessible and to upgrade the existing train stabling area to accommodate the new Regional Rail fleet.

To reduce noise from the operation of the stabling yard, a noise wall approximately 250 metres in length is being installed on Lackey Road along the western side of the stabling yard.



What is a noise wall?

A noise wall, also known as a sound wall or acoustic barrier, is a structure designed to reduce noise from a particular source, such as stabling yard operations.

Where is the noise wall being installed?

The noise wall is being installed on Lackey Road, along the western side of the stabling yard, to the north of Moss Vale Station.

What is the existing stabling yard used for and why is it being upgraded?

The existing stabling yard at Moss Vale is used to carry out cleaning and servicing of the Endeavour fleet of passenger trains. Upgrades to the train stabling area are required to accommodate the new Regional Rail fleet.

What are the dimensions of the noise wall?

Approximately 250 metres in length and 5.5 metres in height.

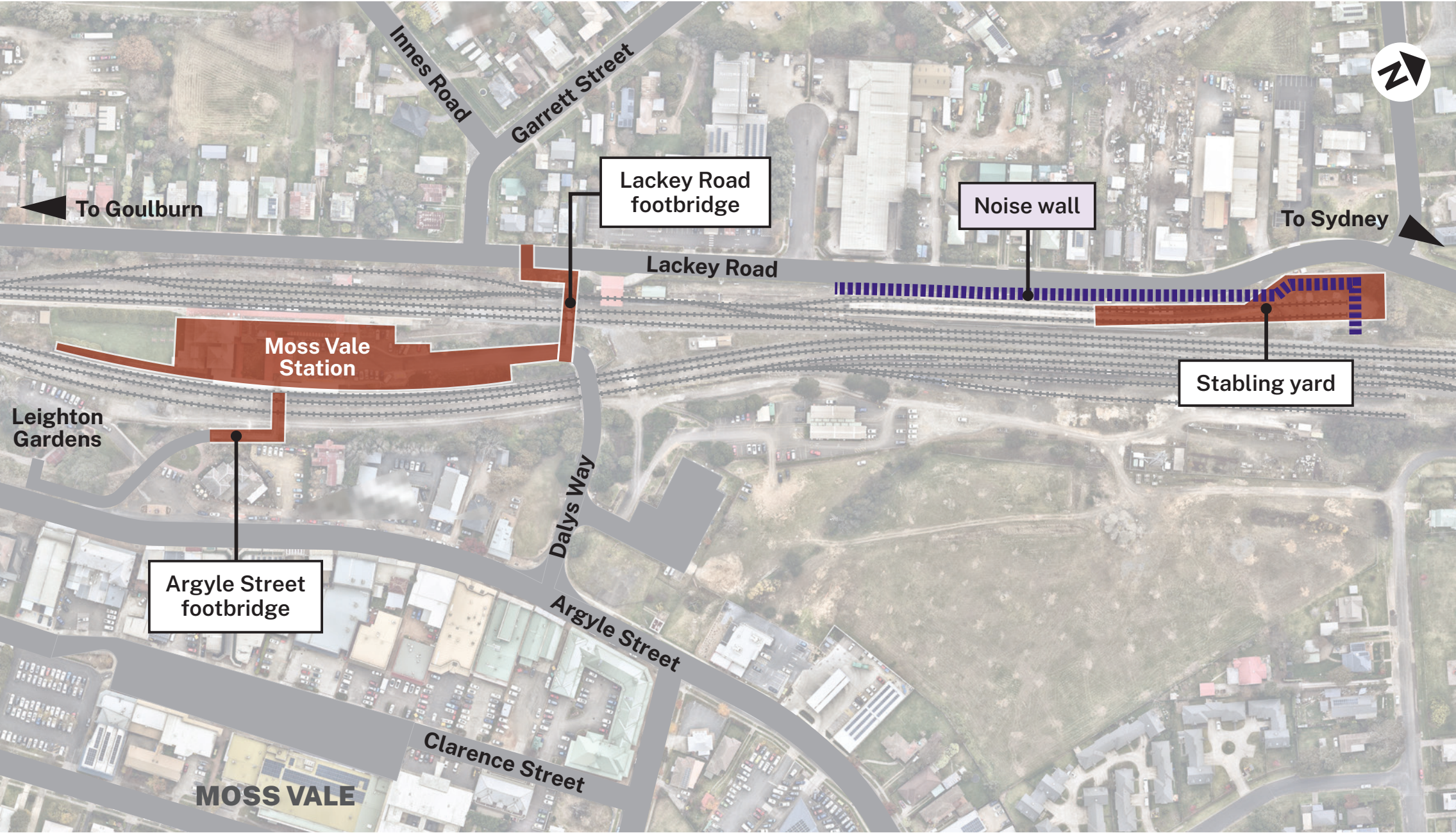
Why do we need to replace the existing noise wall?

The existing noise wall on Lackey Road is being replaced to meet current industry standards and relevant planning guidelines. Noise assessments have found that the existing wall no longer provides sufficient noise reduction for nearby residents.

To minimise noise levels at the nearest receivers, a new noise wall with sound absorption material will be installed. This has been determined as a feasible and reasonable noise management and mitigation measure to reduce the noise impact from the stabling yard operations for nearby residents.

How have noise levels been predicted?

A Noise and Vibration Impact Assessment was prepared by an acoustic consultant which included a detailed noise monitoring assessment of the area, modelling of predicted noise levels from the operation of the stabling yard, and the ability of various mitigation measures to effectively manage noise levels for nearby residents.



Location of the noise wall

What activities within the stabling yard are expected to be noisy?

Stabling yard operations are expected to be similar to existing activities, including train arrivals and departures, train idling, preparation, cleaning, brake release and horn testing.

Will the noise wall completely eliminate noise from the stabling yard?

While the noise wall will significantly reduce noise levels from stabling yard operations, it is not feasible to eliminate all noise.

What will the noise wall look like?

An artist’s impression has been included on the front page.

What materials will the noise wall be made of?

The material that is being used in the noise wall panels is reinforced concrete, while the columns are made from high grade structural steel that has been hot dip galvanised.

The concrete has had an oxide added to the panels to darken their appearance and make the noise wall more recessive.

What is the expected timeline for installing the noise wall?

Installation of the steel columns is largely complete. Completion of the remaining columns and installation of the concrete panels is expected to be completed by mid 2025.

Does the noise wall design allow for vegetation/plants in this area?

The design features dedicated alcoves within the noise wall for landscaping, and the existing grass verge in front of the wall will be retained.

How will the effectiveness of the noise wall be evaluated once completed?

A post-construction noise compliance assessment will be carried out to review the performance of the mitigation measures, including the noise wall.

Are there any plans for additional noise mitigation measures?

This will be subject to the outcome of the post-construction compliance assessment.

When was the local community consulted?

Planning documents, including the *Review of Environmental Factors (REF)*, were placed on public display from Monday 20 November to Wednesday 20 December 2023. During this period, the community was asked to provide feedback on the proposal, which included the proposed noise wall.

A drop-in community information session was held at the Moss Vale Services Club on 4 December 2023, providing an opportunity for the community to meet in person and ask any questions.

To inform the local community prior to the public display period and information session, a variety of communication channels were used, including a media release, distribution of over 4,800 flyers to Moss Vale residents, two advertisements in the Southern Highland News, three geo-targeted social media campaigns, along with other engagement activities.

All feedback collected formed an important part of the final detailed design and is outlined in the Determination Report that was released on 24 April 2024.

Are the panels coated with an anti-graffiti layer to stop graffiti?

The wall is being made using reinforced concrete and with a ribbed pattern, designed to deter graffiti while also being durable enough to withstand cleaning. Anti-graffiti coating will be applied to the lower section of the wall.

Who can I contact for more information?

For further information please contact the Project Infoline at **1800 684 490** or visit the project website at **transport.nsw.gov.au/projects/current-projects/moss-vale**.



Moss Vale Station

Contact us



Project Infoline: 1800 684 490
24-hour Construction Response Line: 1800 775 465



projects@transport.nsw.gov.au



transport.nsw.gov.au/projects/current-projects/moss-vale



PO Box 484 Wagga Wagga, NSW 2650



For the latest project updates,
please visit the project website



Interpreter service

For languages other than English please call 131 450

www.transport.nsw.gov.au/privacy-statement#Your_Privacy