

# Mount Ousley interchange project

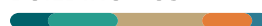
## Project update

January 2025



Australian Government

**BUILDING AUSTRALIA**



The team completed a range of activities during the multiple night closures

The Australian and NSW Governments are investing in a new interchange on the M1 Princes Motorway at the base of Mount Ousley to improve connectivity, safety and efficiency for those travelling through the gateway to Wollongong.

### What we've been doing

Since work commenced on site we have:

- carried out extensive site establishment work including lane reconfigurations, vegetation clearing and earthworks
- made significant progress on the relocation of utilities
- carried out the first multiple night closures of the M1 Princes Motorway (Mount Ousley) in November and December 2024
- started work to extend and upgrade the pedestrian bridge over the M1 Princes Motorway at Northfields Avenue
- completed the majority of the project's detailed design.

### What's coming up?

Early this year we will:

- carry out extensive vegetation clearing on the southern side of the M1 Princes Motorway
- construct the new heavy vehicle bypass lane and the first of two new heavy vehicle safety ramps
- commence piling work for the new retaining walls and bridges
- continue work to extend and upgrade the pedestrian bridge over the M1 Princes Motorway at Northfields Avenue
- complete key works during multiple night closures of the M1 Princes Motorway (Mount Ousley).

# Hours of work

Our standard work hours for the project are **Monday to Friday** between **7am** and **6pm**, and **Saturday** between **8am** and **1pm**.

While building the Mount Ousley interchange, we will need to work at night when working near live traffic to minimise traffic disruptions and ensure the safety of workers and road users.

Night work is carried out between **7pm** and **6am**, when required and weather permitting.

The community is notified in advance of night work being carried out.

Work is scheduled at night for the following reasons:

- minimise traffic disruptions
- ensure the safety of workers and road users
- minimise disruption to utility networks.

Activities we need to carry out at night may include:

- delivery of large or oversize machinery and construction materials
- bridge work including lifting and setting of bridge beams
- vegetation clearing and mulching near the road
- installing safety barriers and signs
- pavement work and linemarking
- building site access roads and gates.

## Equipment we use

We will use a variety of equipment and machinery as part of construction, including:

- |                           |                            |
|---------------------------|----------------------------|
| • excavators              | • mulchers                 |
| • bulldozers              | • chainsaws                |
| • graders                 | • watercarts               |
| • hammers                 | • saw-cutters              |
| • rollers                 | • bobcats                  |
| • cranes                  | • horizontal drillers      |
| • tippers                 | • profilers                |
| • semi-trailers           | • lighting towers          |
| • vacuum trucks           | • safety barriers          |
| • street sweepers         | • flagging                 |
| • piling rigs             | • temporary fencing        |
| • articulated haul trucks | • traffic signs and lights |

# Project key benefits

The key benefits of the project include:



Improved safety by separating cars and heavy vehicles travelling southbound.



Improved travel times by replacing the existing intersection of the M1 Princes Motorway and Mount Ousley Road which currently experiences long queues and delays during peak periods.



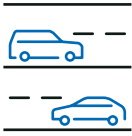
Improved access between Wollongong CBD and University of Wollongong.



Improved amenity for pedestrians and cyclists.



Supporting growing freight movements to the South Coast.



Safer access to and from the Princes Motorway to Mount Ousley Road.

## Asbestos management

As part of our work, excavation and clearing is taking place. These activities have resulted in the discovery of asbestos in some locations.

Discovering these materials is not an unusual occurrence on road construction projects as it was common for asbestos to be used in a range of building and construction material up until 1987. Asbestos-containing material is one of the most common types of soil contamination in Australia, in part due to issues such as illegal dumping.

We work in line with the Environmental Protection Authority (EPA) and SafeWork NSW guidelines to ensure we appropriately manage and remove asbestos according to our environmental and health obligations.



## We've been busy on site and in the community

From establishing the main site compound and completing electrical and water utility relocations, to holding community drop-in sessions and hosting biology students, it was a busy and productive year for the Mount Ousley interchange project. Here's a little of what the team got up to both on and off site in 2024.

### Uni students schooled on native plants

Over 240 University of Wollongong biology students learned about native plants from an Indigenous perspective when they visited the project last year and heard from local Aboriginal stakeholders. The students and members of the project team also collected over 300 plants from an area between the M1 Princes Motorway and University of Wollongong for reuse in the University grounds and for students to take home.

### Logs provide nature play

The project has donated some logs salvaged from clearing operations to Wollongong City Council for use in nature play projects. The logs were used as climbing/balancing elements in a Nature Play space in Stanwell Park in October 2024. Planning for the reuse of logs and mulch from the work site in other community projects is under way.

### Landcare's productive visit

Last year members of Illawarra Landcare visited the site and salvaged over 200 plants and seeds prior to major clearing works. The group, together with members of the project team, collected plant species native to the area so they could be replanted elsewhere in the local community while propagating the seeds to increase Landcare's plant stocks.



University of Wollongong students collect native plants for replanting (above and below)



Members of Illawarra Landcare and the project team



The Nature Play space at Stanwell Park





## Pedestrian and cyclist access across Mount Ousley Road

Transport is carrying out early design and planning for a shared path bridge across Mount Ousley Road that will provide improved connections for people walking and cycling between the University of Wollongong and TAFE precincts and suburbs to the north.

We recently met with local community groups to seek input on issues they would like considered in the development of a concept design for a shared path bridge.

This feedback is being considered by the design team and further engagement with community groups and the broader community is planned over the coming months.

The project scope currently under construction will also deliver the following active transport improvements:

- a new four-metre-wide shared path over the M1 Princes Motorway and the new southbound access road near the University of Wollongong
- an upgrade and extension of the existing pedestrian bridge across the motorway to Northfields Avenue
- a new shared path along the eastern side of the M1 Motorway adjacent to TAFE NSW that will connect the new shared path over the M1 Motorway with the existing path to the pedestrian bridge at Northfields Avenue.

## Community drop-in session

In September 2024, the project team held a drop-in information session at Mount Ousley Public School to give the community an opportunity to meet the team and to ask questions about the project. Over 70 people attended the session, with topics of discussion ranging from the interchange design and associated traffic impacts to vegetation clearing and construction-related impacts such as noise.



A drop-in session was held in September

## Northfields Avenue pedestrian bridge upgrade under way

Work on upgrading and extending the pedestrian bridge over the M1 Princes Motorway is well under way, with the existing ramp now demolished. A temporary ramp has been installed to provide access across the bridge, while work on the new ramp continues. The bridge work is expected to be complete in the first half of 2025.



The pedestrian bridge over the M1 Princes Motorway having its ramp demolished (top) and with the ramp gone (bottom)

## Multiple night closures deliver results

The M1 Princes Motorway is a busy and key corridor for freight and other traffic travelling between Sydney and the South Coast.

We will carry out extensive work during planned full closures of the M1 Princes Motorway which can only occur at night to minimise disruption.

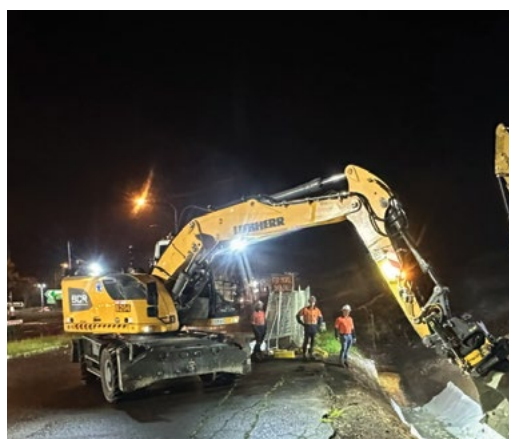
Our first round of multiple night closures of the M1 Princes Motorway (Mount Ousley Road) and Picton Road were carried out in November and December 2024.

We achieved a lot during the closures, including:

- removing 22 noise wall panels
- placing 1400 metres of temporary safety barriers
- laying 1100 tonnes of asphalt
- placing 32 temporary lights.

We worked over 12,600 people hours during these closures which allowed us to carry out critical activities safely and without disruption to traffic. Future night closures will allow us to continue to carry out critical activities.

**Scan the QR code to watch footage of work carried out during these night closures.**



The project team carrying out a range of activities during the multiple night closures

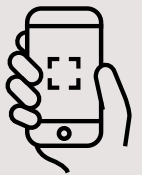




The project team placing pavement during the multiple night closures

## Communicating with you about our work

Subscribe to our email and SMS list via the project website or by scanning the QR code to receive regular updates on what's happening on the project. We will continue to inform you in advance about work activities via community notifications delivered to letterboxes. If at short notice there is a change to the timing of our work, we will make every effort to inform you of those changes. Joining our email subscriber list helps to ensure we can keep you up to date with the latest project information.



## Contact us

The project team is available to discuss any questions or concerns you have regarding the project or construction activities.



**1800 792 918**



**MountOusleyInterchange@  
fultonhogan.com.au**



**[transport.nsw.gov.au/mountousley](https://transport.nsw.gov.au/mountousley)**



**Mount Ousley interchange,  
PO Box 477 Wollongong NSW 2520**

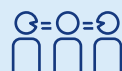


You can also scan the QR code to visit the project website and subscribe for email and SMS



### For the latest traffic updates:

Call 132 701, visit [livetraffic.com](https://www.livetraffic.com) or download the app Live Traffic NSW



## Interpreter service

For languages other than English call **131 450**  
Arabic • Greek • Hindi • Mandarin • Vietnamese

لطلب خدمة الترجمة الشفهية للغات غير الإنجليزية اتصل  
بالرقم 131 450

Για υπηρεσίες διερμηνείας σε άλλες γλώσσες εκτός από  
τα Αγγλικά καλέστε το **131 450**

अंग्रेज़ी के अतिरिक्त अन्य भाषाओं के लिए दुभाषिया सेवा  
**131 450 पर कॉल करें**

获取英语以外的其他语言口译协助服务可以致电**131 450**

Để có dịch vụ thông ngôn cho các ngôn ngữ khác tiếng  
Anh, gọi số **131 450**

[www.transport.nsw.gov.au/privacy-statement#Your\\_Privacy](https://www.transport.nsw.gov.au/privacy-statement#Your_Privacy)