

# Nightwork on the Northern Distributor Road in Orange from Wednesday 9 April

## Northern Distributor Road

April 2025



Transport for NSW acknowledges the Traditional Custodians of the lands on which we work and pays respect to Elders past and present.

Transport for NSW is carrying out essential road maintenance on the Northern Distributor Road in Orange to provide a safer road environment and to reinstate the 80 km/h speed limit.

### What work are we doing?

We are commencing the first stage of repair work which includes temporary layers of asphalt laid over the existing pavement to improve the road surface.

The confirmation of Naturally Occurring Asbestos (NOA) in the road corridor means there can be no large-scale excavation as part of our repairs for the Northern Distributor Road so crews need to work within those important safety parameters.

### When and where we'll be working

Work will take place on a 2.8-kilometre section of the Northern Distributor Road between the Mitchell Highway and Icely Road.

To minimise the impact to motorists and local businesses, **the work will be carried out at night across 15 shifts between 7pm and 6am from Sunday to Thursday. Work will start from Wednesday 9 April and expected to take three weeks to complete, weather permitting.**

Work will not take place on Public Holidays.

### Traffic impacts

The work will be carried out under traffic control with reduced speed limit to 40 km/h, single lane closures and intermittent stopping.

All road users are advised to follow the directions of signs and traffic control and slow down on approach. **For the latest traffic updates, call 132 701, or visit [livetraffic.com](https://www.livetraffic.com) or download the Live Traffic NSW App.**

### What will this mean for you?

You may notice:

- workers in white protective coveralls and masks due to the area containing NOA
- noise from machinery and equipment
- traffic control and signage in place.

### Managing our impacts

We aim to manage our work to avoid impacts to the community and the environment. This includes:

- working to an Asbestos Management Plan with dust monitors and additional dust suppression controls in place
- reducing our noise as much as possible and turning off machinery and vehicles
- Directing lighting away from residences
- access for businesses and residents will be maintained at all times
- Variable Messaging Signs (VMS) in place.

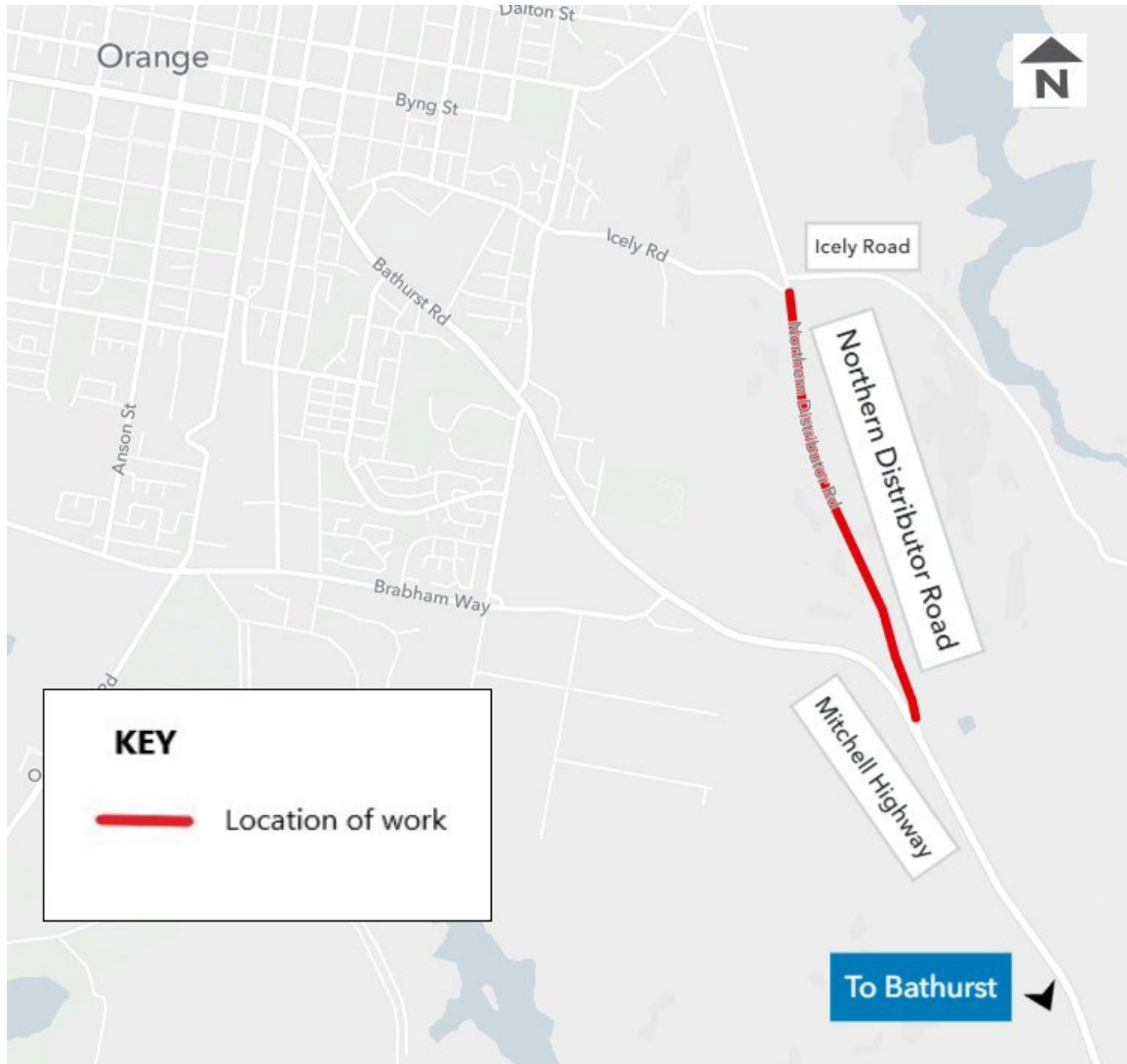
### Next steps

Crews will return later in the year when the weather warms up to continue the job, with several thicker layers of asphalt to be placed to provide a smoother and longer-lasting road surface for all motorists.

We understand that this work will generate some inconvenience. We thank you for your patience.



## Location of work area



## Contact us



Project Infoline **1800 167 499**



[western.projects@transport.nsw.gov.au](mailto:western.projects@transport.nsw.gov.au)



[nswroads.works/westregion](http://nswroads.works/westregion)



PO Box 334  
Parkes, NSW 2870



### Interpreter service

For languages other than English call 131 450  
Arabic • Greek • Hindi • Mandarin • Vietnamese

لطلب خدمة الترجمة الشفهية للغات غير الإنجليزية اتصل  
بالرقم **131 450**

Για υπηρεσίες διερμηνείας σε άλλες γλώσσες εκτός από  
τα Αγγλικά καλέστε το **131 450**

अंग्रेज़ी के अतिरिक्त अन्य भाषाओं के लिए दुभाषिया सेवा  
**131 450** पर कॉल करें

获取英语以外的其他语言口译协助服务可以致电**131 450**

Để có dịch vụ thông ngôn cho các ngôn ngữ khác tiếng  
Anh, gọi số **131 450**



### For the latest traffic updates:

Call 132 701, visit [livetraffic.com](http://livetraffic.com) or  
download the app Live Traffic NSW