

Pacific Highway and Oxley Highway Interchange Upgrade

Have your say – Review of Environmental Factors

August 2025



Oxley Highway Interchange

The NSW Government is investing \$20 million towards improvements to the Pacific Highway and Oxley Highway Interchange.

Transport for NSW (Transport) is seeking feedback on the (REF) and concept design for the Pacific Highway and Oxley Highway Interchange Upgrade.





The proposed upgrade will be split into two stages:

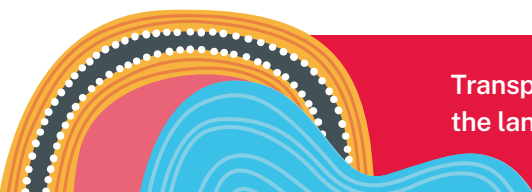
Stage 1: Western side of the interchange to Billabong Drive

Stage 2*: Eastern side of the interchange to Port Macquarie Service Centre

** Subject to funding availability*

The objective of the upgrade is to:

-  improve road safety
-  improve peak hour travel at the interchange
-  provide a road transport network which supports future travel demands
-  increase road transport efficiency, productivity and reliability.



Review of Environmental Factors

Transport is now seeking community and stakeholder feedback on the REF and concept design for the proposed upgrade, which includes:

- four lanes between the interchange and Billabong Drive
- northbound off ramp extension
- southbound off ramp duplication
- south-east slip lane
- north-east slip lane
- traffic signals
- streetlighting upgrade.

To view the REF, please **visit transport.nsw.gov.au/oxleyinterchange** or scan the QR code.



Have your say on the Review of Environmental Factors

The concept design and REF for the Pacific Highway and Oxley Highway Interchange Upgrade is now on public display for feedback.

The REF outlines the project features and assesses the potential environmental impacts expected when the upgrade is being built and in operation.

The REF demonstrates how we plan to minimise and manage these impacts, and feedback at this stage helps us further understand what is most important to our customers and the community.

The REF is on public display for community feedback from now until midnight **Monday 1 September 2025**.

You can submit feedback via:

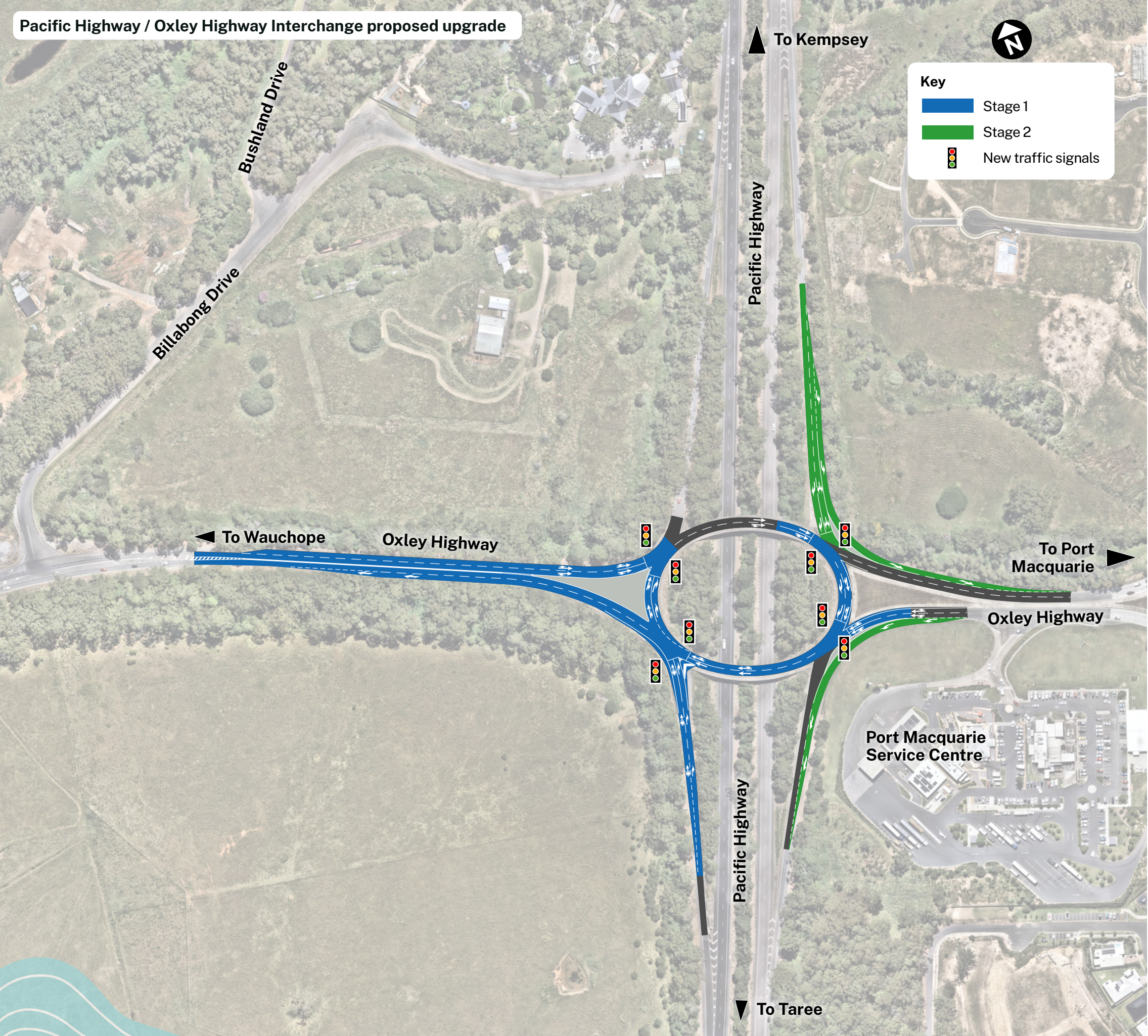
Webpage: **transport.nsw.gov.au/oxleyinterchange**

Email: **OxleyInterchange@transport.nsw.gov.au**

In writing: **Oxley Interchange Upgrade, PO Box 576, Grafton, NSW 2460**



The concept design and REF for the Pacific Highway and Oxley Highway Interchange Upgrade is now on public display for feedback.



Talk to the team

We are keen to hear from you and welcome your questions or feedback. The project team will be at community information sessions below:

Session 1

Monday 11 August 2025 (4pm - 6pm)

Sovereign Place Town Centre
15 Chancellors Drive
Thrumster NSW 2444

Session 2

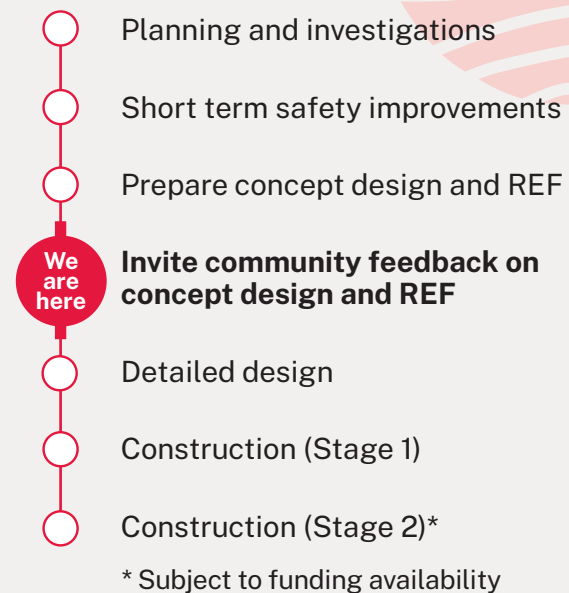
Tuesday 12 August 2025 (10am - 12pm)

Wauchope Library
53 High Street
Wauchope NSW 2446



Pacific Highway and Oxley Highway Interchange

Project timeline



Next steps

At the end of the REF display period, we will consider all feedback received, prepare a submissions report and publish it on the project website. The report will summarise comments and questions received along with response from Transport.

We will continue to keep community members and stakeholders informed of progress throughout the remainder of this project.



To view the REF, please scan the QR code or visit:
transport.nsw.gov.au/oxleyinterchange

The REF is on public display for community feedback from now until **midnight Monday 1 September 2025**.

Contact us



OxleyInterchange@transport.nsw.gov.au



transport.nsw.gov.au/oxleyinterchange



**Oxley Interchange Upgrade
PO Box 576, Grafton, NSW 2460**



Scan the QR code for the latest project updates and to visit the project website



Interpreter service

For languages other than English please call **131 450**

www.transport.nsw.gov.au/privacy-statement#Your_Privacy