

# Rail Service Improvement Program

## Arncliffe to Tempe

September 2025



Transport for NSW acknowledges the Gweagal, Bidjigal and Gadigal people of the Eora Nation as the Traditional Custodians of the lands on which we work and pays respect to Elders past and present.

The Rail Service Improvement Program enables a safer, more equitable, and integrated transport network where people can travel more safely, reliably, and efficiently across NSW.

In September, we will continue to upgrade signal and cable infrastructure as well as undertake track investigations and testing within the rail corridor. This work will take place at our site compound and adjacent work areas.

### What work are we doing?

Work includes:

- Installation of signalling and communication cables
- Wiring and installation of signalling and trackside equipment
- Completing site investigations, track measurements, design verification and testing activities.

### When and where we'll be working

Work will take place within the rail corridor between Arncliffe Station and city-side of Tempe Station. We will also be working and receiving deliveries at our site compound and temporary laydown areas adjacent to the rail corridor between Arncliffe and Tempe.

Standard construction hours on this project are between **7am and 6pm Monday to Friday and 8am and 1pm on Saturdays.**

### Out of hours work

Due to safety reasons, we will be completing track measurement work during Sydney Trains maintenance windows within the rail corridor between Wolli Creek Station and city-side of Tempe Station. This preparatory work will take place between **6pm Monday 1 September and 6am Wednesday 3 September.**

**Work during September will be low impact and is not expected to be noisy.**

### What will this mean for you?

You may notice:

- An increase of workers and vehicles near our site access points
- Heavy vehicles delivering materials at our site compound and near laydown areas.

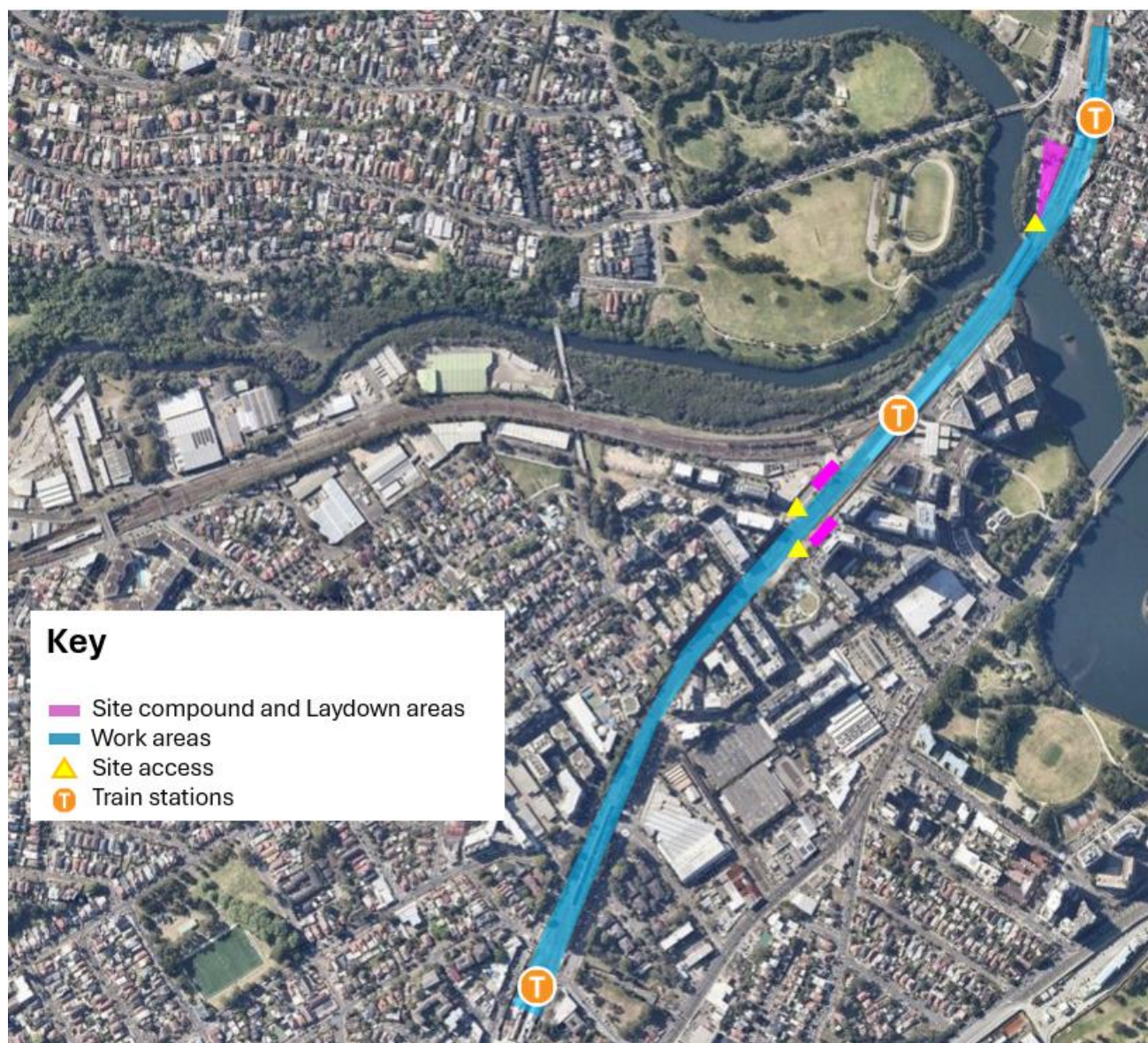
### Managing our impacts

We understand some construction activities may cause disruption to our closest neighbours, and every effort will be made to minimise impacts where possible, including:

- Turning off vehicles when not in use
- Keeping noise to a minimum.



## Location of work area



### Key

- Site compound and Laydown areas
- Work areas
- Site access
- Train stations

## Contact us



Project Infoline **1800 684 490**  
24-hour Construction Response Line  
**1800 775 465**



**projects@transport.nsw.gov.au**



7 Harvest Street  
Macquarie Park, NSW 2113 PO Box K659,  
Haymarket NSW 1240



Visit the online portal go to  
**caportal.com.au/tfnsw/rsip**



**For the latest traffic updates:**  
Call 132 701, visit [livetraffic.com](http://livetraffic.com) or  
download the app Live Traffic NSW



### Interpreter service

For languages other than English call **131 450**  
Arabic • Greek • Hindi • Mandarin • Vietnamese

لطلب خدمة الترجمة الشفهية للغات غير الإنجليزية اتصل  
بالرقم **131 450**

Για υπηρεσίες διερμηνείας σε άλλες γλώσσες εκτός από  
τα Αγγλικά καλέστε το **131 450**

अंग्रेज़ी के अतिरिक्त अन्य भाषाओं के लिए दुभाषिया सेवा  
**131 450** पर कॉल करें

获取英语以外的其他语言口译协助服务可以致电**131 450**

Để có dịch vụ thông ngôn cho các ngôn ngữ khác tiếng  
Anh, gọi số **131 450**

[www.transport.nsw.gov.au/privacy-statement#Your\\_Privacy](http://www.transport.nsw.gov.au/privacy-statement#Your_Privacy)